

Yale 630089001709

Yale Locks 89 Deadlock Nightlatch Instruction Manual

1. PRODUCT OVERVIEW

The Yale Locks 89 Deadlock Nightlatch is a security locking mechanism designed for doors. It features key operation from the exterior and a lever handle for interior access. The latch automatically deadlocks upon door closure, enhancing security. For additional overnight security, the internal handle can be deadlocked using the snib button.

Key Features:

- Key operated from outside, lever handle operated from inside.
- Latch automatically deadlocks when the door closes.
- Inside handle can be deadlocked by a reverse turn of the key.
- Enhanced security features.
- Hardened case for durability.



Image 1: Yale Locks 89 Deadlock Nightlatch components, showing the main lock body and strike plate.

2. SETUP AND INSTALLATION

Before beginning installation, ensure you have the necessary tools and that the door is suitable for this lock. The Yale 89 Deadlock Nightlatch is designed for wooden doors up to 57 mm thick. The required screws and fittings are included. It is crucial to verify the backset size, which is the measurement from the edge of the door to the center of the keyhole. This model has a 60 mm backset.

Refer to the detailed diagram below for precise measurements and component placement to ensure correct installation.

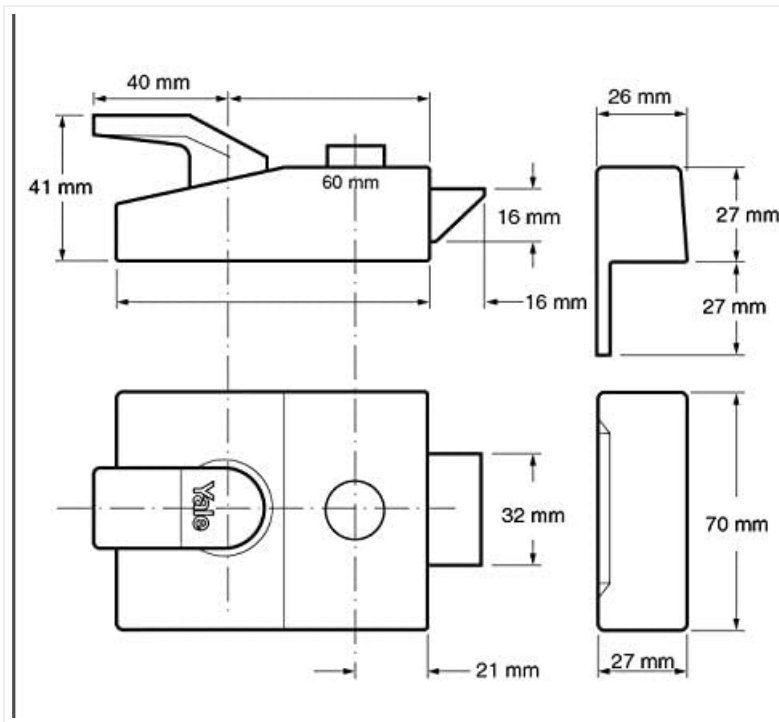


Image 2: Technical drawing illustrating the dimensions and mounting points for the Yale Locks 89 Deadlock Nightlatch.

3. OPERATION

To operate the Yale 89 Deadlock Nightlatch:

- **From the exterior:** Insert the key into the cylinder and turn to unlock or lock the mechanism.
- **From the interior:** Use the lever handle to retract the latch bolt and open the door.
- **Automatic Deadlocking:** When the door is closed, the latch automatically engages and deadlocks, preventing forced entry.
- **Snib Button Function:** The snib button allows the latch bolt to be held back temporarily, keeping the door open without locking. For additional security, the snib button can be used to deadlock the internal handle, preventing it from being operated from the inside without a key.

4. MAINTENANCE

Regular maintenance ensures the longevity and smooth operation of your Yale 89 Deadlock Nightlatch.

- **Cleaning:** Periodically wipe the lock body and cylinder with a soft, dry cloth to remove dust and grime. Avoid abrasive cleaners or solvents.
- **Lubrication:** Apply a small amount of graphite powder or a silicone-based lubricant specifically designed for locks into the keyway and moving parts annually. Do not use oil-based lubricants as they can attract dirt and cause clogging.

5. TROUBLESHOOTING

If you encounter issues with your Yale 89 Deadlock Nightlatch, consider the following:

- **Stiff Key Operation:** If the key is difficult to turn, try lubricating the cylinder with graphite powder. Ensure the key is fully inserted.
- **Latch Not Retracting:** Check for obstructions around the latch bolt or strike plate. Ensure the

internal lever handle moves freely.

- **Door Not Latching Properly:** Verify that the strike plate is correctly aligned with the latch bolt. Adjust if necessary.
- **Loose Components:** Periodically check and tighten any visible screws on the lock body or strike plate.

6. SPECIFICATIONS

| Feature | Detail |
|-----------------------------|---|
| Brand | Yale |
| Model Name | Yale Locks 89 Deadlock Nightlatch DMG Satin Chrome Cylinder 60 mm Backset Boxed |
| Item Model Number | 630089001709 |
| Part Number | YAL89DMGSC |
| Lock Type | Key Lock |
| Special Feature | Key Lock |
| Material | Chrome |
| Finish | Satin Chrome |
| Color | Multicolor |
| Item Dimensions (L x W x H) | 4.33 x 2.95 x 2.95 inches |
| Item Weight | 0.76 Kilograms (1.67 pounds) |
| Backset Size | 60 mm |
| Recommended Uses | Security |
| Included Components | Key, Screws |
| Item Package Quantity | 1 |

7. WARRANTY INFORMATION

Warranty information for the Yale 89 Deadlock Nightlatch is typically provided with the product packaging or can be found on the official Yale website. Please retain your proof of purchase for warranty claims.

8. SUPPORT

For technical assistance, spare parts, or further inquiries regarding your Yale 89 Deadlock Nightlatch, please contact Yale customer support. Contact details can usually be found on the product packaging or the official Yale website.

