

TFA 303039

TFA KlimaLogg Pro 30.3039.IT Professional Thermo-Hygrometer User Manual

Model: 30.3039.IT

INTRODUCTION

The TFA KlimaLogg Pro 30.3039.IT is a professional thermo-hygrometer with an integrated data logger, designed for precise monitoring and recording of temperature and humidity. This device offers high accuracy sensors and a PC interface for comprehensive climate control and data evaluation. This manual provides essential information for the setup, operation, maintenance, and troubleshooting of your KlimaLogg Pro.



Figure 1: TFA KlimaLogg Pro Professional Thermo-Hygrometer.

1. SETUP

1.1 Battery Installation

The KlimaLogg Pro requires 1 AA battery for operation. A battery is typically included with the device.

1. Locate the battery compartment on the back of the device.
2. Open the battery compartment cover.
3. Insert the AA battery, ensuring correct polarity (+/-).
4. Close the battery compartment cover securely.

1.2 Initial Power-On

After battery installation, the device should power on automatically. The LCD display will show initial readings for temperature and humidity.

1.3 Connecting External Sensors (Optional)

The KlimaLogg Pro supports optional external sensors for expanded monitoring capabilities. Refer to the specific instructions provided with your external sensor for connection details. Once connected, the device will automatically detect and display data from these sensors.

1.4 PC Connection and Software Installation

To utilize the data logging and evaluation features, connect the KlimaLogg Pro to a PC via the provided USB interface. Install the accompanying PC software from the manufacturer's website or included media. This software allows for detailed configuration, data retrieval, and analysis.

2. OPERATING INSTRUCTIONS

2.1 Display Overview

The LCD display provides real-time readings for internal temperature and humidity. If external sensors are connected, their readings will also be shown, often cycling through different channels or accessible via specific buttons on the device.

2.2 Data Logging Function

The KlimaLogg Pro continuously logs temperature and humidity data. The logging interval can be configured via the PC software. The device has internal memory to store recorded data, which can then be transferred to a computer for long-term storage and analysis.

2.3 Using the PC Software

The PC software is crucial for advanced operation. It enables:

- **Configuration:** Set recording intervals, alarm thresholds for temperature and humidity, and name individual sensors.
- **Data Retrieval:** Download logged data from the device to your computer.
- **Data Evaluation:** View historical data in graphical format, analyze trends, and export data (e.g., to CSV format) for further processing.

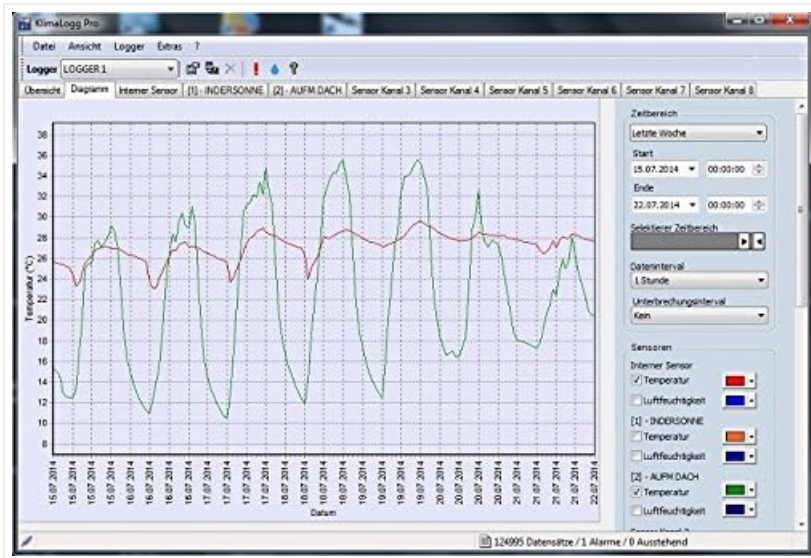


Figure 2: Example of the KlimaLogg Pro PC software interface for data evaluation.

3. MAINTENANCE

3.1 Battery Replacement

When the battery indicator appears on the display, replace the AA battery promptly to ensure continuous operation and data logging. Follow the battery installation steps outlined in Section 1.1.

3.2 Cleaning

Clean the device with a soft, dry cloth. Do not use abrasive cleaners or solvents, as these can damage the display or casing. Ensure no moisture enters the device.

3.3 Storage

If storing the device for an extended period, remove the battery to prevent leakage and potential damage. Store in a cool, dry place away from direct sunlight.

4. TROUBLESHOOTING

- **No Display/Device Not Powering On:**

Check battery installation and ensure correct polarity. Replace with a fresh AA battery if necessary. Ensure the battery compartment is closed securely.

- **Inaccurate Readings:**

Ensure the device is placed in a location free from direct heat sources, drafts, or excessive moisture. Allow sufficient time for the sensors to stabilize after placement or power-on. Calibrate if possible via software (refer to software manual).

- **PC Software Not Detecting Device/Data Transfer Issues:**

Verify the USB connection. Ensure the device is within range of the USB receiver if using a wireless connection (for external sensors, if applicable). Close other applications that might interfere with USB communication. Reinstall the PC software if problems persist. Ensure the device is not too far from the USB receiver and there are not too many walls in between, as this can prolong data transfer.

- **External Sensor Not Displaying Data:**

Check the connection of the external sensor. Ensure the sensor has its own power source (if required) and is within the operational range of the main unit.

5. SPECIFICATIONS

Feature	Detail
Model Number	30.3039.IT
Brand	TFA
Power Source	Battery Powered (1 AA battery required, included)
Connectivity Technology	USB
Product Dimensions (D x W x H)	0.98" x 3.86" x 5.39" (25mm x 98mm x 137mm)
Item Weight	5.2 ounces (147 Grams)
Temperature Accuracy	±0.5 °C
Upper Temperature Rating	50 Degrees Celsius
Sensor Technology	Capacitive/Thermal (Humidity), Thermocouple/RTD (Temperature)
Display Type	LCD
Color	White
Manufacturer	TFA Dostmann GmBH + Co. KG
Special Feature	Hygrometer, Data Logger

6. WARRANTY AND SUPPORT

The TFA KlimaLogg Pro is a product of German engineering, known for its quality and precision. For specific warranty information, please refer to the documentation included with your purchase or contact TFA Dostmann directly. For technical support or inquiries, please visit the official TFA Dostmann website or contact their customer service department.

