

[Manuals.plus](#) /

› [Speakman](#) /

› Speakman VS-2007 Napa Anystream Handheld Shower Head User Manual

## Speakman VS-2007

# Speakman VS-2007 Napa Anystream Handheld Shower Head User Manual

Model: VS-2007

## 1. PRODUCT OVERVIEW

---

The Speakman Napa Handheld Shower Head, model VS-2007, is designed to provide a versatile showering experience. It features an ergonomic design and incorporates Anystream 360° technology for spray adjustment. This unit includes 5 adjustable stream nozzles and 12 center pulsating massage jets, offering multiple spray patterns. Users can rotate the spray face to select between gentle rain, full-flood, and pulsating massage sprays. The included 60-inch metal hose provides extended reach for convenience. Components are engineered to resist sediment buildup and prevent clogging, and self-cleaning nozzles are designed to maintain consistent spray performance.



Figure 1: Front view of the Speakman VS-2007 Napa Handheld Shower Head.

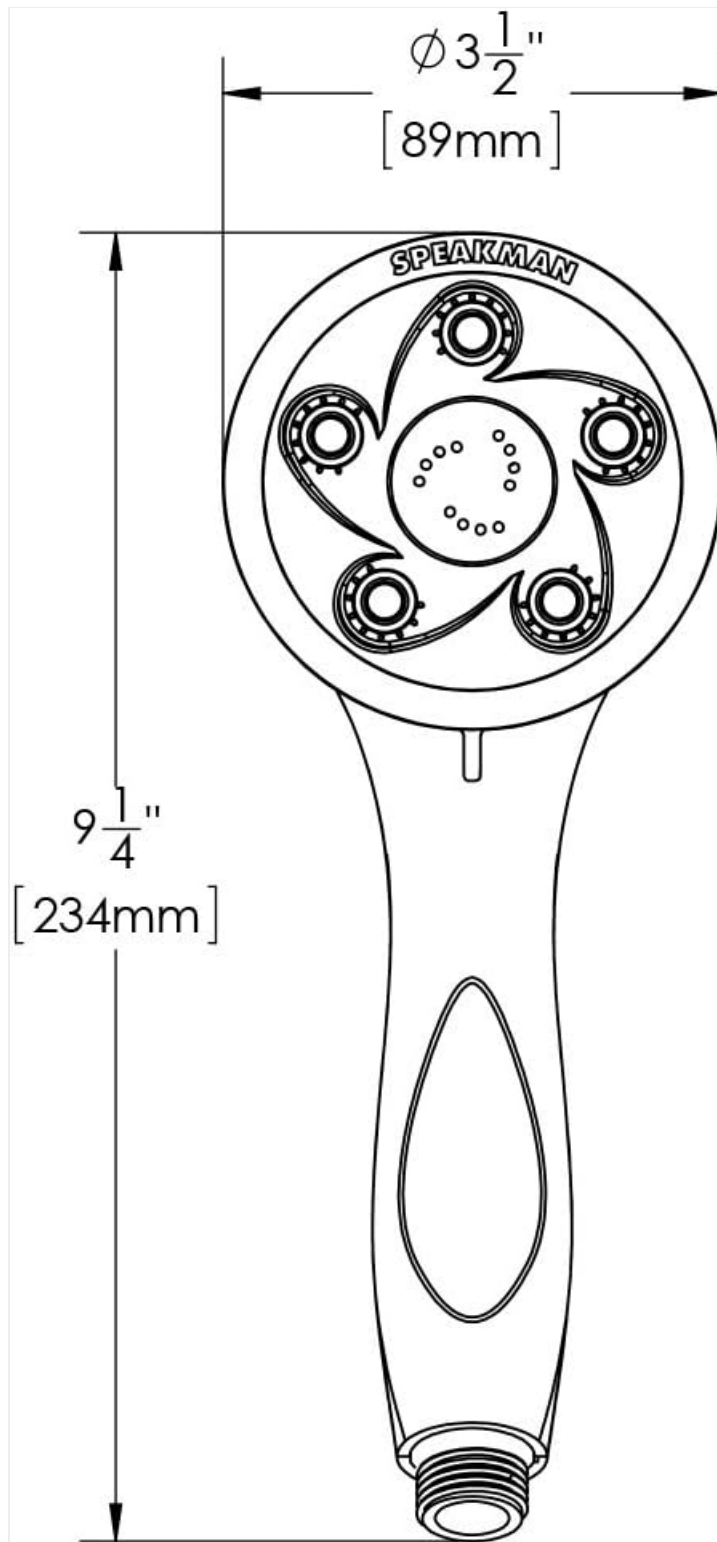


Figure 2: The shower head demonstrating its spray functionality.

## 2. SETUP AND INSTALLATION

---

Before beginning installation, ensure all necessary tools and supplies are available. It is recommended to cover your drain to prevent loss of parts. This shower head is designed for optimal operating range of 20-80 PSI.

### Tools and Supplies Needed:

- Thread Seal Tape (included)
- Adjustable Wrench

INCLUDES TAPE



Figure 3: Thread seal tape, included for installation.

### Installation Steps:

1. **Apply Thread Seal Tape:** Apply thread seal tape to the outlet side of the shower arm in a clockwise direction.
2. **Install Bracket:** Thread the bracket onto the shower arm by turning it in a clockwise direction. Tighten with an adjustable wrench.
3. **Insert Hose Washer:** Ensure the hose washer is inserted inside the conical nut of the hose to avoid leaks. Thread the conical nut onto the bracket.
4. **Connect Hand Shower to Hose:** Ensure the hose washer is inserted inside the connection to the hand shower. Thread the hose onto the hand shower. Hand tighten.
5. **Place Hand Shower into Bracket:** Place the hand shower into the bracket. Turn on water supplies and check for leaks.



Figure 4: Visual guide for installation steps and maintenance tips.

### 3. OPERATING INSTRUCTIONS

---

The Speakman VS-2007 Napa Handheld Shower Head features Anystream 360° technology, allowing for easy adjustment of spray patterns.

#### **Adjusting Spray Settings:**

- To change the spray setting, simply rotate the wide spray face of the shower head.
- Available settings include gentle rain, full-flood, and therapeutic pulsating massage sprays.



Figure 5: The shower head's spray face, which rotates to change settings.

## 4. MAINTENANCE

---

Regular maintenance helps ensure the longevity and optimal performance of your shower head.

### Cleaning Instructions:

- **General Cleaning:** Periodically clean the shower head using a mild soap and warm water. This helps maintain its appearance.
- **Finish Care:** For polished chrome finishes, clean regularly with a soft, clean cloth. Avoid using harsh or abrasive cleaners, as these can damage the finish.
- **Mineral Deposit Removal:** For additional assistance or to remove mineral deposits on the spray nozzles, use a 50/50 solution of white vinegar and water. Soak the shower head in this solution for several hours, then rinse thoroughly. Repeat if necessary.
- **Flow Restrictor:** To reduce mineral buildups, the flow restrictor in the handle is designed to flush out mineral deposits every time the shower is used.

## 5. TROUBLESHOOTING

---

This section addresses common issues you might encounter with your handheld shower head.

## Common Issues and Solutions:

- **Low Water Pressure:** Ensure that the main water supply is fully open. Check for any kinks in the hose. If mineral deposits are present, follow the cleaning instructions in the Maintenance section to clear the nozzles.
- **Leaks at Connections:** Verify that all connections (shower arm to bracket, hose to bracket, hose to hand shower) are securely tightened. Ensure that hose washers are properly seated in each connection. Apply additional thread seal tape if necessary.
- **Inconsistent Spray Pattern:** This may be due to mineral buildup in the nozzles. Refer to the Maintenance section for cleaning instructions.

## 6. SPECIFICATIONS

---

Key specifications for the Speakman VS-2007 Napa Handheld Shower Head.

Feature	Detail
Model Number	VS-2007
Style	Handheld Shower Head
Shape	Round
Material	Engineered Plastic
Finish Type	Polished Chrome
Installation Type	Wall Mounted
Number of Settings	3 (Rain, Full-Flood, Massage)
Number of Jets	12 (Massage Jets)
Flow Rate	2.5 GPM (Gallons Per Minute)
Hose Length	60 Inches
Item Weight	1.36 Pounds

### Dimensions:

## Napa Hand Shower Head

### FEATURES:

- 5 plungers, 45 sprays
- 12 center massage jets
- Durable plastic construction
- Spray adjusting faceplate
- Patented plungers resist scale buildup
- Includes 5' metal hose and arm bracket
- 2.5 gpm (9.5 L/min) flow rate

### FINISH:



PC BN PB

### OPTIONS: Add suffix to model #

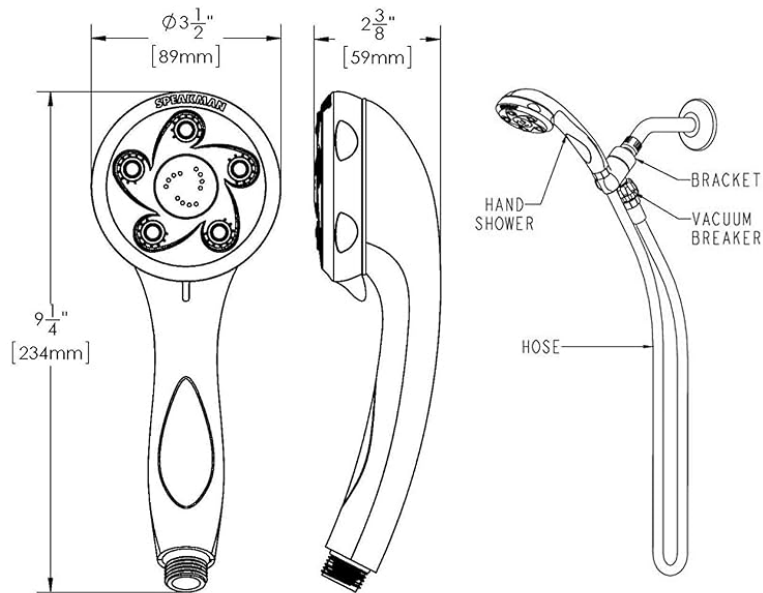
- 2.0 gpm (7.6 L/min) flow rate  -E2
- 1.75 gpm (6.6 L/min) flow rate  -E175

### COMPLIANCE:

- ASME A112.18.1/CSA B125.1 certified
- WaterSense certified (E2, E175)



### DIMENSIONS: NOTE: 1. All dimensions are in inches (millimeters) unless otherwise specified and are subject to change without notice.



Architect/Engineer Approval Space:

Figure 6: Front view dimension diagram. Diameter: 3-1/2 inches (89mm), Length: 9-1/4 inches (234mm).

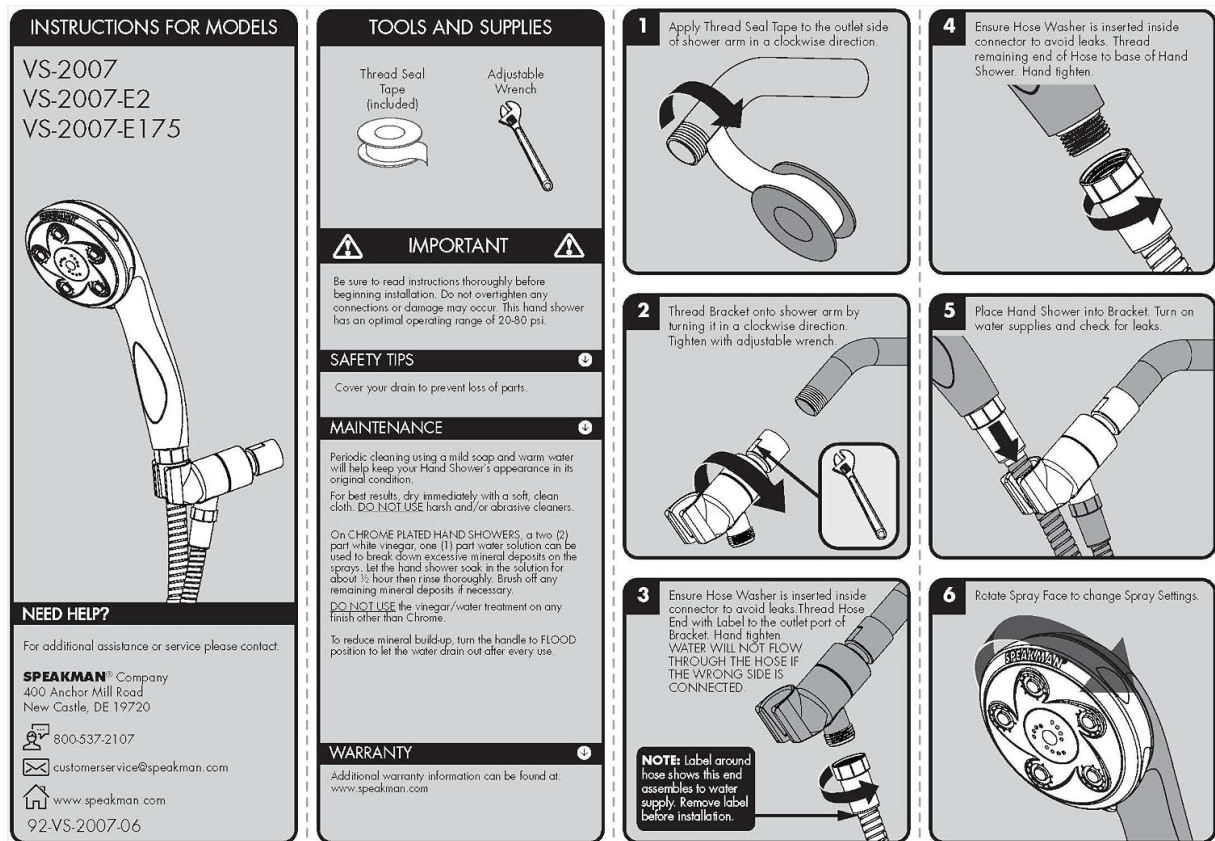


Figure 7: Overview of Napa Hand Shower Head features and dimensions, including side profile and hose connection.

## 7. WARRANTY INFORMATION

The Speakman VS-2007 Napa Handheld Shower Head is backed by a Limited Lifetime Warranty. For specific details regarding warranty coverage and terms, please refer to the official Speakman website or contact customer support.

## 8. SUPPORT AND CONTACT INFORMATION

For additional assistance, service, or questions, please contact Speakman customer support.

**Company:** Speakman Company

**Address:** 400 Anchor Mill Road, New Castle, DE 19720

**Phone:** 800-537-2107

**Email:** [customerservice@speakman.com](mailto:customerservice@speakman.com)

**Website:** [www.speakman.com](http://www.speakman.com)