



Manuals.plus /

› D-Link /

› D-Link DES-1210-28P PoE+ Web Smart Switch User Manual

D-Link DES-1210-28P

D-Link DES-1210-28P PoE+ Web Smart Switch User Manual

Model: DES-1210-28P

Brand: D-Link

1. INTRODUCTION

This manual provides comprehensive instructions for the D-Link DES-1210-28P PoE+ Web Smart Switch. The DES-1210 Series represents the latest generation of D-Link 10/100 Web Smart Switches, incorporating D-Link Green 3.0 technology and compliance with the IEEE 802.3az Energy Efficient Ethernet standard.

Designed for small and medium-sized businesses, this switch offers robust functionality, enhanced security, and simplified manageability. It supports IPv6 management and configuration, ensuring network protection and future compatibility. Multiple management options facilitate quick deployment, infrastructure expansion, and seamless upgrades.

The DES-1210-28P is equipped with a full suite of Layer 2 features, including IGMP Snooping, Port Mirroring, Spanning Tree Protocol, and Link Aggregation Control Protocol (LACP). D-Link's Safeguard Engine provides protection against traffic flooding from malicious attacks. For security, it supports 802.1X port-based authentication, Access Control Lists (ACL), ARP Spoofing Prevention, and DHCP Server Screening.

This model features 24 10/100BASE-TX PoE/PoE+ ports and 4 Gigabit ports – two are dedicated 10/100/1000Mbps copper (RJ45), while the other two are Gigabit “combo” ports, usable with either copper (RJ45) or SFP optical modules. The total PoE power budget for the DES-1210-28P is 193W.

2. PRODUCT FEATURES

- **Web Smart Switch:** Features 24 10/100Mbps Ports, 2 10/100/1000BASE-T ports, and 2 combo 10/100/1000BASE-T/SFP ports.
- **Security Features:** Includes Access Control List (ACL), D-Link Safeguard Engine, and Port Security for robust network protection.
- **Intuitive Management:** Configurable via SmartConsole or Web-Based GUI. Supports Built-in MIB Browser for SNMP, D-View 6.0 Module, and Compact CLI through Telnet.
- **VoIP Application Support:** Supports Auto Voice VLAN and DSCP QoS for optimized Voice over IP performance.
- **PoE Support:** Complies with 802.3af and 802.3at standards, offering a total PoE budget of up to 193W.
- **Smart Fans:** Equipped with smart fans for efficient cooling and noise management.

3. PACKAGE CONTENTS

Verify that your package contains the following items:

- D-Link DES-1210-28P PoE+ Web Smart Switch
- Rack mount ears (2)
- Accessories package (screws, rubber feet)
- Quick Installation Guide
- Power Cord

If any items are missing or damaged, please contact your local D-Link reseller for assistance.

4. PHYSICAL OVERVIEW

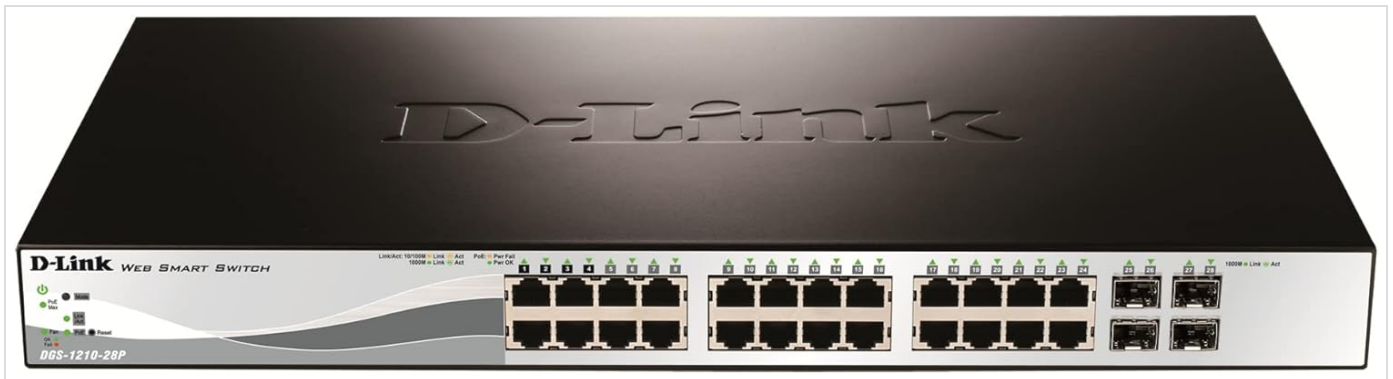


Figure 4.1: Front Panel of the DES-1210-28P Switch. This image shows the front of the D-Link DES-1210-28P switch, highlighting the 24 Fast Ethernet PoE/PoE+ ports, 2 Gigabit RJ45 ports, and 2 Gigabit Combo SFP/RJ45 ports. Status LEDs for power, link/activity, and PoE status are also visible.



Figure 4.2: Rear Panel of the DES-1210-28P Switch. This image displays the rear of the D-Link DES-1210-28P switch, showing the AC power input connector and grounding screw.

5. SETUP AND INSTALLATION

5.1 Safety Precautions

- Ensure the power source voltage is compatible with the switch's requirements (100-240V AC, 50/60Hz).
- Do not block ventilation openings.
- Avoid placing the switch in areas with high humidity or extreme temperatures.
- Always disconnect power before cleaning or servicing the device.

5.2 Rack Mounting

The DES-1210-28P switch can be mounted in a standard 19-inch equipment rack. Use the provided rack mount ears and screws to secure the switch to the rack. Ensure adequate airflow around the unit.

1. Attach the two rack mount ears to the sides of the switch using the screws provided.
2. Align the mounting holes on the ears with the holes on the equipment rack.
3. Secure the switch to the rack using appropriate rack screws (not always included with switch).

5.3 Desktop Installation

For desktop installation, attach the included rubber feet to the bottom of the switch to prevent scratching and provide stability. Place the switch on a flat, stable surface with sufficient ventilation.

5.4 Connecting the Switch

- **Power Connection:** Connect the provided power cord to the AC inlet on the rear panel of the switch and then to a suitable power outlet.
- **Network Devices:** Connect your network devices (computers, servers, IP cameras, VoIP phones, access points) to the 10/100BASE-TX PoE/PoE+ ports using standard Ethernet cables.
- **Uplink Connections:** Use the Gigabit RJ45 or SFP combo ports for uplink connections to other switches, routers, or network backbone devices.

6. OPERATING THE SWITCH

6.1 Initial Power On

Once connected to power, the switch will automatically power on. Observe the Power LED on the front panel; it should illuminate green, indicating normal operation.

6.2 LED Indicators

The front panel LEDs provide real-time status information:

- **Power LED:** Solid green indicates the switch is powered on.
- **Link/Act LEDs (per port):**
 - Solid green: A valid network link is established.
 - Blinking green: Data activity is occurring on the port.
- **PoE Status LEDs (per PoE port):**
 - Solid green: PoE power is being supplied to the connected device.
 - Blinking green: PoE fault or overload condition.

6.3 Management Access

The DES-1210-28P is a Web Smart Switch, primarily managed via a web-based Graphical User Interface (GUI). It also supports SmartConsole and a Compact Command Line Interface (CLI) via Telnet.

1. **Web GUI Access:**
 - Connect a computer to any port on the switch.
 - Configure your computer's IP address to be in the same subnet as the switch's default IP address (refer to the Quick Installation Guide for default IP).
 - Open a web browser and enter the switch's IP address.
 - Log in using the default username and password (typically "admin" for both).

2. **SmartConsole:** Use the D-Link SmartConsole utility for network discovery and initial configuration.
3. **CLI (Telnet):** For advanced users, Telnet access provides command-line configuration options.

Note: It is highly recommended to change the default login credentials immediately after initial access for security purposes.

7. MAINTENANCE

7.1 General Care

- Keep the switch in a clean, dust-free environment.
- Ensure proper ventilation to prevent overheating. Do not obstruct the air vents.
- Avoid exposing the switch to direct sunlight or heat sources.

7.2 Cleaning

To clean the exterior of the switch, use a soft, dry cloth. Do not use liquid or aerosol cleaners, as they may damage the device. Always disconnect the power cord before cleaning.

7.3 Firmware Updates

Periodically check the D-Link support website for firmware updates. Firmware updates can provide new features, performance improvements, and security enhancements. Follow the instructions provided with the firmware update package carefully.

Important: Do not power off the switch during a firmware update process, as this may corrupt the device.

8. TROUBLESHOOTING

Problem	Possible Cause	Solution
Switch does not power on.	No power, faulty power cord, or power supply issue.	Verify power cord is securely connected to both the switch and a working power outlet. Check the power outlet with another device.
No link light for a connected device.	Incorrect cable, faulty cable, device not powered on, or port issue.	Ensure the Ethernet cable is correctly connected at both ends. Try a different cable or port. Verify the connected device is powered on and functioning correctly.
PoE device not receiving power.	PoE budget exceeded, non-PoE device, or cable issue.	Check the PoE status LED for the port. Ensure the device is PoE-compatible. Verify the total PoE power consumption does not exceed 193W. Try a different PoE port or cable.
Cannot access web management interface.	Incorrect IP address, network configuration issue, or firewall blocking access.	Ensure your computer's IP address is in the same subnet as the switch. Verify the switch's IP address. Temporarily disable any firewall on your computer. Try resetting the switch to factory defaults (refer to manual for procedure).

8.1 Factory Reset

If you encounter persistent issues or forget the management password, you may need to perform a factory reset. This will revert all settings to their default values.

Procedure: Locate the reset button (often a small pinhole) on the front or rear panel. With the switch powered on, use a

paperclip or similar pointed object to press and hold the reset button for approximately 5-10 seconds until the LEDs flash. Release the button and allow the switch to reboot. The switch will then be accessible with its default IP address and credentials.

9. SPECIFICATIONS

Feature	Detail
Model Number	DES-1210-28P
Switch Type	Managed (Web Smart)
Number of Ports	28 (24 x 10/100Mbps PoE/PoE+, 2 x 10/100/1000Mbps RJ45, 2 x Gigabit Combo SFP/RJ45)
PoE Standard	IEEE 802.3af/at
Total PoE Power Budget	193W
Data Transfer Rate	100 Megabits Per Second (Fast Ethernet), 1000 Megabits Per Second (Gigabit Ethernet)
Interface Type	PoE, SFP
Dimensions (L x W x H)	20.5 x 14 x 4 inches
Item Weight	5.6 pounds
Case Material	Metal
Voltage	100-240 Volts AC
Operating Temperature	0°C to 40°C (32°F to 104°F)

10. WARRANTY AND SUPPORT

10.1 Warranty Information

D-Link products typically come with a limited lifetime warranty. Please refer to the warranty card included with your product or visit the official D-Link website for detailed warranty terms and conditions specific to the DES-1210-28P model.

Warranty coverage generally includes defects in materials and workmanship under normal use. It does not cover damage caused by misuse, accidents, unauthorized modifications, or natural disasters.

10.2 Technical Support

For technical assistance, product registration, or to download the latest drivers and firmware, please visit the official D-Link support website:

<https://www.dlink.com/support>

You may also contact D-Link technical support directly via phone or email. Contact information can be found on the D-Link support website or in the Quick Installation Guide.

When contacting support, please have your product model number (DES-1210-28P) and serial number ready.

