

## Manuals+

[Q & A](#) | [Deep Search](#) | [Upload](#)

Manuals.plus /

- › [Vogue Patterns](#) /
- › Vogue Patterns V8607 Misses' Jacket and Coat Instruction Manual

## Vogue Patterns V8607BB0

# Vogue Patterns V8607 Misses' Jacket and Coat Instruction Manual

## 1. PRODUCT OVERVIEW

---

This pattern provides instructions for creating loose-fitting, lined jackets and coats. Designs feature front and back stitched pleats, a back neck band, and kimono sleeves in two lengths. Topstitching details are included. View A is a hip-length jacket with three-quarter length sleeves and a single button closure. Views B and C are coats with lower front and back darts, side seam pockets, and long sleeves. View B is 4 inches above mid-knee length with a single button closure. View C is mid-knee length and includes purchased cording button loops. Purchased buttons are required for all views.

## 2. KEY FEATURES

---

- **Sewing Rating:** Very easy.
- **Figure Compatibility:** Designed for Rectangle, Hourglass, Triangle, and Inverted-Triangle figures.
- **Sizes Included:** BB (8-10-12-14).
- **Contents:** Includes pattern pieces and comprehensive sewing instructions.
- **Origin:** Made in the U.S.A. by Vogue Patterns.

## 3. MATERIALS AND NOTIONS

---

### Recommended Fabrics:

Lightweight Woolens, Wool Crepe, and Double-sided Fleece. Avoid obvious diagonals, plaids, or stripes. Use nap yardages/layouts for pile, shaded, or one-way design fabrics.

### Notions Required:

- **Jacket A, Coat B:** One 1-3/8 inch button.
- **Coat C:** Four 1-3/8 inch buttons and 1/2 yard of 1/8 inch cording.

## 4. SIZING INFORMATION

---

This pattern is provided in Size BB, which includes individual sizes 8, 10, 12, and 14. To ensure the best fit, refer to the specific body measurements chart located on the pattern envelope. Select the pattern pieces that

correspond to your chosen size based on your personal measurements.

## 5. FIGURE FLATTERY GUIDE

---

This guide assists in determining your body shape to select the most flattering style. Understanding your figure type can help minimize pattern adjustments and ensure a well-fitting garment.

### Figure Flattery

Determine your body shape from the explanations below and use our KEY TO FIGURE FLATTERY diagram to select styles that are particularly flattering to your figure. Choosing styles suited to your body shape can also eliminate the need for most pattern adjustments. Look for the figure symbol that indicates your body shape, then proceed with confidence, knowing that your pattern adjustments will be minimal and your finished garment will be pure figure flattery.

- THE INVERTED TRIANGLE:** Large bust and/or broad shoulders with narrow hips.
- THE TRIANGLE:** Small bust and/or narrow shoulders with full hips and/or thighs.
- THE RECTANGLE:** Balanced on top and bottom, but boxy, with little or no waist definition.
- THE HOURGLASS:** Equally balanced on top and bottom, with a trim waist.

This guide provides a visual and textual explanation of different body shapes (Inverted Triangle, Triangle, Rectangle, Hourglass) and how to choose flattering styles, as recommended by Vogue Patterns.

**THE INVERTED TRIANGLE:** Large bust and/or broad shoulders with narrow hips.

**THE TRIANGLE:** Small bust and/or narrow shoulders with full hips and/or thighs.

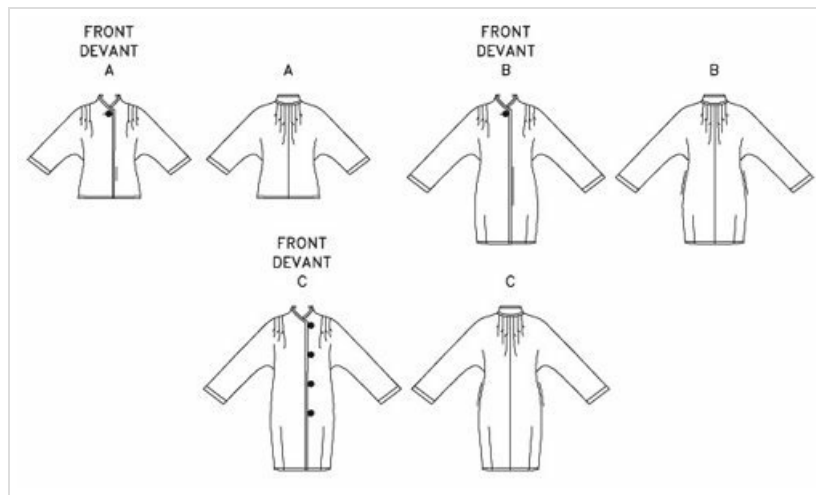
**THE RECTANGLE:** Balanced on top and bottom, but boxy, with little or no waist definition.

**THE HOURGLASS:** Equally balanced on top and bottom, with a trim waist.

## 6. PATTERN VIEWS

---

The following image illustrates the different jacket and coat views (A, B, C) included in this pattern, showcasing their front and back designs.



This image shows technical line drawings of the three distinct garment views (A, B, and C) from the V8607 pattern, illustrating their front and back designs.

## 7. SETUP AND PREPARATION

- 1. Pattern Selection and Cutting:** Carefully select the pattern pieces corresponding to your chosen view and size. Pin pattern pieces to your fabric according to the layout guide provided within the pattern envelope. Cut fabric accurately, following all indicated lines.
- 2. Fabric Preparation:** Preshrink your fabric if necessary, following the fabric manufacturer's recommendations. Press all fabric pieces to remove wrinkles before beginning to sew.
- 3. Marking:** Transfer all pattern markings (darts, pleats, button placements, notches) to your fabric using tailor's chalk, a fabric marker, or tailor's tacks. Accuracy in marking is crucial for proper garment construction.

## 8. OPERATING (SEWING) INSTRUCTIONS

Follow the step-by-step instructions provided in the pattern envelope. Pay close attention to seam allowances, pressing instructions, and specific construction techniques for pleats, sleeves, and lining. Assemble garment sections in the order specified.

### Key Construction Steps:

- Assemble front and back sections, carefully incorporating stitched pleats as indicated.
- Attach the back neck band, ensuring a smooth finish.
- Construct and attach the kimono sleeves, matching all notches.
- For coats B and C, create and attach side seam pockets according to the pattern.
- Install the lining as instructed, ensuring it lies smoothly within the garment.
- Apply topstitching where indicated for a professional finish.
- Attach buttons and create buttonholes (or cording loops for View C) as specified.

## 9. MAINTENANCE

Care instructions for the finished garment will depend entirely on the fabric chosen. Always refer to the fabric manufacturer's care recommendations for specific washing, drying, and ironing instructions. Generally:

- **Woolens and Wool Crepe:** May require dry cleaning or gentle hand washing with appropriate wool detergents.

- **Double-sided Fleece:** Can often be machine washed on a delicate cycle with cold water and tumble dried on low heat.

Proper care will help maintain the garment's shape and appearance.

## 10. TROUBLESHOOTING

---

- **Garment does not fit:** Double-check your body measurements against the pattern's sizing chart. Ensure you selected the correct pattern size. Review seam allowances and adjust if necessary during construction.
- **Pleats are uneven:** Ensure all pattern markings were transferred accurately to the fabric. Carefully fold and stitch pleats precisely according to the instructions, using pins to hold them in place before sewing.
- **Sleeves do not hang correctly:** Verify that sleeves were attached with the correct orientation (front to front, back to back) and that all notches were matched precisely during attachment.
- **Difficulty with buttonholes/loops:** Practice creating buttonholes or cording loops on scrap fabric before working on the actual garment. Ensure correct stabilizer is used for buttonholes to prevent fabric distortion.

## 11. SPECIFICATIONS

---

- **Product Dimensions (Pattern Envelope):** 5.8 x 0.2 x 8.4 inches
- **Item Model Number:** V8607BB0
- **ASIN:** B004F9OSZ0
- **Item Weight:** 2.4 ounces
- **Manufacturer:** Vogue Patterns
- **Date First Available:** December 31, 2010
- **Brand:** Vogue Patterns
- **Size:** BB (8-10-12-14)
- **Material (Pattern):** Paper
- **UPC:** 031664430810

## 12. WARRANTY AND SUPPORT

---

### Warranty Information:

As a sewing pattern, this product does not typically come with a manufacturer's warranty. Please inspect all pattern pieces upon receipt to ensure completeness and quality.

### Customer Support:

For questions regarding this Vogue Patterns product or for further assistance, please refer to the contact information provided on the pattern envelope or visit the official Vogue Patterns website for their customer service resources.