

**Manuals+**

[Q & A](#) | [Deep Search](#) | [Upload](#)

manuals.plus /

› **BLANCO** /

› **BLANCO Alta 512319 Single-Lever Kitchen Mixer Tap Instruction Manual**

**BLANCO 512319**

# **BLANCO Alta 512319 Single-Lever Kitchen Mixer Tap Instruction Manual**

Model: 512319 | Brand: BLANCO

## **1. INTRODUCTION**

This manual provides essential information for the installation, operation, and maintenance of your BLANCO Alta 512319 Single-Lever Kitchen Mixer Tap. Please read these instructions carefully before installation and use to ensure proper function and longevity of the product.



Figure 1: BLANCO Alta 512319 Single-Lever Kitchen Mixer Tap. This image displays the complete tap unit, highlighting its chrome finish and modern design.



Figure 2: BLANCO Alta 512319 Tap in a kitchen setting. This image shows the tap installed next to a kitchen sink, demonstrating its integration into a contemporary kitchen environment.

The BLANCO Alta 512319 is a single-lever mixer tap designed for kitchen use, featuring a high spout for convenience and a 360° revolvable spout for enhanced flexibility. It is constructed from brass with a chrome finish, ensuring durability and a rust-resistant quality.

## 2. SETUP AND INSTALLATION

---

Proper installation is crucial for the optimal performance of your BLANCO Alta tap. It is recommended that installation be performed by a qualified professional.

### 2.1 Pre-Installation Requirements

- A tap hole with a diameter of **Ø 35 mm** is required for mounting.
- Ensure adequate space under the sink for the flexible connector pipes and mounting hardware.

### 2.2 Installation Steps

1. Insert the tap into the pre-drilled Ø 35 mm tap hole.
2. Secure the tap from underneath the sink using the provided stabilization plate and mounting hardware. The stabilization plate increases stability, especially in stainless steel sinks.
3. Connect the flexible connector pipes (450 mm long with 3/8" nut) to the tap and to the hot and cold water supply lines. Ensure all connections are tight to prevent leaks.
4. Flush the water lines before connecting the tap to remove any debris.
5. Test the tap for proper operation and check for any leaks.

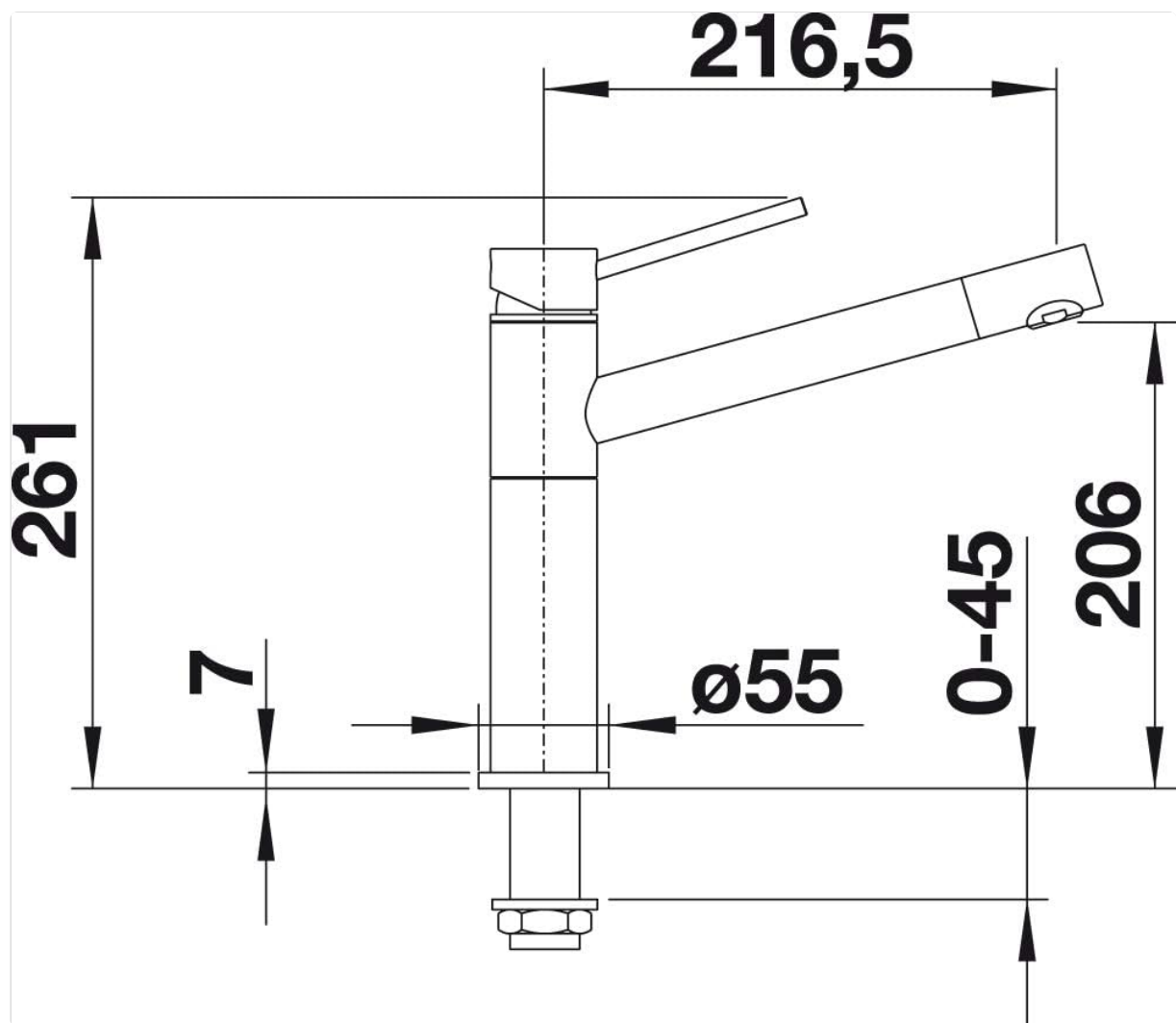


Figure 3: Technical drawing with dimensions. This diagram illustrates the critical dimensions for installation, including the required tap hole diameter and overall height and reach.

### 3. OPERATING INSTRUCTIONS

The BLANCO Alta 512319 tap is designed for ease of use with a single-lever control.

#### 3.1 Water Flow and Temperature Control

- To turn the water on or off, move the single lever handle up or down.
- To adjust the water temperature, move the lever handle left for hot water and right for cold water.

#### 3.2 Spout Functionality

- The tap features a high spout, ideal for filling large pots and vases.
- The spout can be swiveled 360 degrees, providing flexibility and reach across your sink area. This feature is particularly useful for multi-bowl sinks or for filling containers outside the sink.

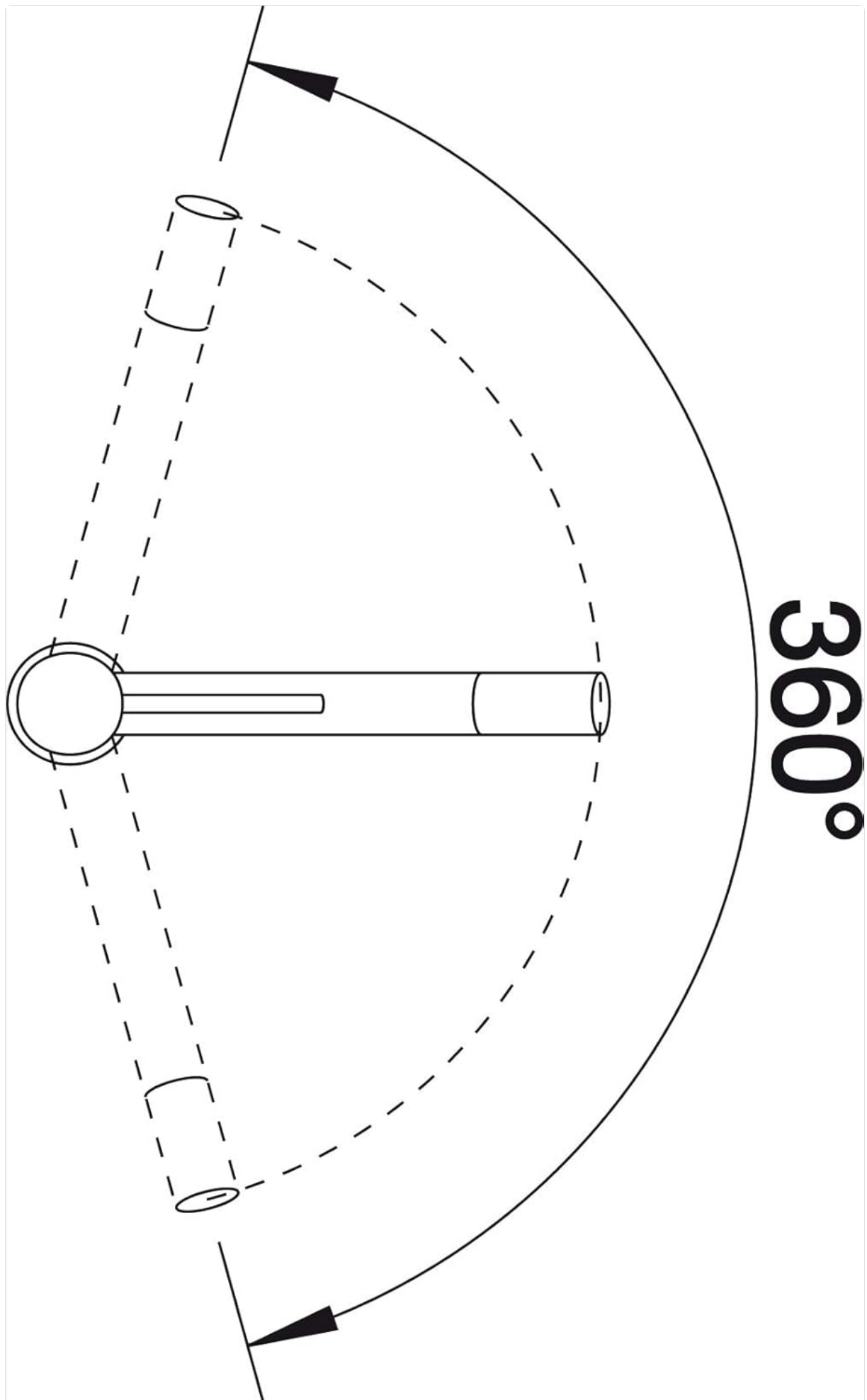


Figure 4: Spout swivel range. This diagram visually represents the 360-degree rotation capability of the tap spout, indicating its full range of motion.

## 4. MAINTENANCE AND CARE

Regular cleaning and proper maintenance will ensure the longevity and appearance of your BLANCO Alta tap.

- **Cleaning:** Clean the chrome finish regularly with a soft cloth and mild soap or a non-abrasive cleaner specifically designed for chrome fixtures. Avoid harsh chemicals, abrasive sponges, or acidic cleaners, as these can damage the finish.
- **Rust Resistance:** The tap is designed to be rust-resistant. However, proper drying after use and cleaning helps maintain its pristine condition.
- **Jet Regulator:** The tap features a patented jet regulator designed to reduce scaling. Periodically check and clean the aerator (jet regulator) at the end of the spout to remove any mineral deposits that may affect water flow.

## 5. TROUBLESHOOTING

This section addresses common issues you might encounter with your tap.

| Problem                               | Possible Cause                       | Solution  |
|---------------------------------------|--------------------------------------|---|
| Reduced water flow                    | Clogged aerator (jet regulator)      | Unscrew the aerator from the spout and clean any mineral deposits or debris. Reinstall securely.  |
| Water dripping from spout             | Worn ceramic disk cartridge or seals | A dripping tap often indicates a worn ceramic disk cartridge or seals. Contact a qualified plumber or BLANCO customer support for replacement parts and professional service. |
| Leakage at base of tap or connections | Loose connections or damaged seals   | Check all connections for tightness. If leakage persists, seals may need replacement. It is recommended to consult a professional plumber.                                    |

## 6. SPECIFICATIONS

| Feature             | Detail           |
|---------------------|------------------|
| Brand               | BLANCO           |
| Model Number        | 512319           |
| Material            | Brass            |
| Finish Type         | Chrome           |
| Mounting Type       | Deck Mount       |
| Number of Handles   | 1 (Single-Lever) |
| Hole Count Required | 1 (Ø 35 mm)      |

| Feature                        | Detail  |
|--------------------------------|---|
| Spout Swivel Range             | 360°  |
| Special Feature                | Rust-Resistant, Patented Jet Regulator, Stabilization Plate   |
| Included Components            | Kitchen Mixer, Flexible Connector Pipes (450 mm, 3/8" nut), Ceramic Disk Cartridge, Stabilization Plate |
| Product Dimensions (L x W x H) | 8.5 x 1.81 x 10.28 inches (approximate)   |
| Item Weight                    | 4.84 pounds (approximate)   |

## 7. WARRANTY AND SUPPORT

BLANCO products are manufactured to high-quality standards. For specific warranty information, please refer to the documentation included with your purchase or visit the official BLANCO website. For technical support, replacement parts, or service inquiries, please contact BLANCO customer service directly.

**BLANCO Official Website:** [www.blanco.com](http://www.blanco.com)