

Altec Lansing MP450

Altec Lansing Octiv Stage MP450 30-Pin iPad Speaker Dock User Manual

Your guide to setting up, operating, and maintaining your speaker dock.

1. INTRODUCTION

The Altec Lansing Octiv Stage MP450 is a versatile speaker dock designed to enhance your audio and viewing experience with compatible Apple devices. It features dual speakers for clear sound, charges your device while docked, and offers flexible viewing angles with its rotating stand.

Package Contents

- Altec Lansing Octiv Stage / Octiv 450 Speaker System
- Remote Control
- Quick-Connect Instructions



Image: The Altec Lansing Octiv Stage MP450 speaker dock, showcasing an iPad securely docked in landscape orientation, displaying video content. The compact remote control is visible in the foreground, indicating wireless operation. This image illustrates the primary function and components of the speaker dock.

2. SETUP

2.1 Power Connection

1. Connect the power adapter to the DC IN port located on the rear of the Octiv Stage.

2. Plug the power adapter into a standard electrical wall outlet.
3. The unit will typically power on automatically, or it can be activated using the power button.

2.2 Device Docking

- Carefully align your iPad, iPhone, or iPod with the 30-pin connector on the dock.
- Gently push the device down onto the connector until it is securely seated.
- For iPad 2 and later models, utilize the provided rubber stay to ensure a snug and stable fit.
- The docked device will commence charging automatically when the speaker dock is powered.

2.3 Auxiliary Input

To connect other portable audio devices (e.g., MP3 players) that do not feature a 30-pin connector, use a standard 3.5mm audio cable (not included). Connect one end of the cable to your device's headphone jack and the other end to the AUX IN port on the Octiv Stage.

3. OPERATION

3.1 Audio Playback

Once your compatible device is properly docked, audio will automatically be routed through the Octiv Stage speakers. Adjust the playback volume using the dedicated controls on the speaker dock, the included remote control, or directly from your docked device.

3.2 Device Charging

The Octiv Stage is designed to charge your docked iPad, iPhone, or iPod whenever the unit is connected to a power source, including during active audio playback.

3.3 Rotating Stand

The integrated docking stand allows for flexible viewing. You can gently rotate your iPad while it is docked to switch between portrait and landscape orientations. The stand also permits tilting the screen forward or backward to achieve various optimal viewing angles.

3.4 Remote Control Functions

The provided full-featured remote control offers convenient wireless operation of the speaker dock and basic media functions:

- **Power:** Toggles the unit on or off.
- **Volume Up/Down:** Increases or decreases the speaker volume.
- **Play/Pause:** Controls media playback (start/stop).
- **Next/Previous Track:** Skips to the next or previous audio track.
- **Menu Navigation:** Provides limited navigation capabilities depending on the specific device and application.

Note: The extent of remote control functionality may vary based on the specific application being used on your docked device and its iOS version.

4. MAINTENANCE

4.1 Cleaning

To clean the Octiv Stage, first disconnect it from the power source. Use a soft, dry cloth to wipe down the surfaces. Avoid using liquid cleaners, aerosol sprays, or abrasive materials, as these can damage the finish or internal components.

4.2 Storage

When the unit is not in use for extended periods, store it in a cool, dry environment, away from direct sunlight, excessive heat, or extreme cold.

5. TROUBLESHOOTING

Problem	Solution
No power	Ensure the power adapter is securely connected to both the unit and a functional electrical outlet. Test the outlet with another device to confirm it is working.
No sound from speakers	Verify that your device is properly docked. Confirm that the volume on both the Octiv Stage and your docked device is turned up and not muted. If using the AUX IN, ensure the audio cable is fully inserted and the external device's volume is adequate.
Device not charging	Confirm the speaker dock is powered on and your device is correctly seated on the 30-pin connector. Inspect the connector for any debris that might obstruct the connection.
Remote control not working	Check the battery in the remote control and replace it if necessary. Ensure there are no physical obstructions between the remote control and the unit's infrared sensor.
iPad/iPhone connection is tenuous or disconnects easily	Ensure the device is firmly seated on the dock. If you are using a protective case, remove it to ensure full and proper contact with the 30-pin connector. For iPad 2 and later models, use the provided rubber stay to improve stability.
Unit powers down after 10 minutes (energy saving feature)	This behavior is an intended energy-saving feature. The unit will automatically power down if no audio is playing for a period of 10 minutes. There is no user-adjustable setting to disable this feature.

6. SPECIFICATIONS

- **Model:** MP450
- **Dimensions (H x W x D):** 4.33 x 8.66 x 6.06 inches (11 x 22 x 15.4 cm)
- **Weight:** Approximately 1 pound (0.45 kg)
- **Speaker Drivers:** Two 2-inch (50-millimeter) full-range neodymium drivers
- **Connectivity:** 30-pin dock connector, 3.5mm auxiliary input
- **Compatible Devices:** iPad, iPad 2, iPhone 4, iPod Touch, iPod Nano, and other iPod/iPhone models with 30-pin connector.

- **Power:** AC Adapter (Input: 100-240V ~ 50/60Hz)

7. WARRANTY AND SUPPORT

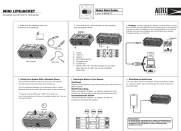

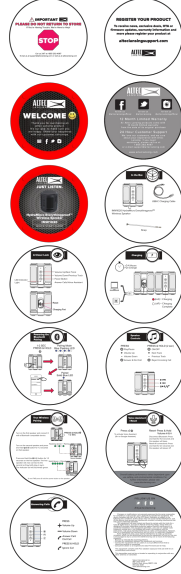
For detailed warranty information and technical support, please refer to the quick-connect instructions included with your product. It is advisable to retain your proof of purchase for any warranty claims.

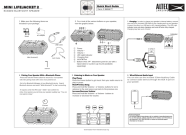

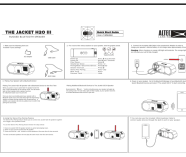
Manufacturer: Altec Lansing, LLC

Website: www.alteclansing.com (Please note: This link is provided as a general reference. For the most accurate and up-to-date support information, consult your product's physical manual or the manufacturer's official website.)

© 2024 Altec Lansing. All rights reserved. Product specifications are subject to change without notice.

Related Documents - MP450

	<p>Altec Lansing Mini LifeJacket IMW475 Rugged Bluetooth Speaker Quick Start Guide</p> <p>Quick start guide for the Altec Lansing Mini LifeJacket IMW475 rugged Bluetooth speaker. Learn how to charge, pair, listen to music, use wired input, and activate Siri. Includes warranty information and technical support details.</p>
	<p>Altec Lansing ACS65i Amplified Speaker System User Guide</p> <p>User guide for the Altec Lansing ACS65i amplified speaker system. This document provides detailed instructions on setup, operation, safety precautions, specifications, and warranty information for multimedia computer audio applications.</p>
	<p>Altec Lansing IMW1020 HydraMicro Wireless Speaker Quick Start Guide</p> <p>Get started with your Altec Lansing IMW1020 HydraMicro Everythingproof Wireless Speaker. This quick start guide provides instructions on setup, Bluetooth pairing, controls, charging, and True Wireless Stereo (TWS) pairing.</p>

	<p>Altec Lansing Mini LifeJacket 2 Rugged Bluetooth Speaker Quick Start Guide</p> <p>A comprehensive quick start guide for the Altec Lansing Mini LifeJacket 2 rugged Bluetooth speaker (Model IMW477), covering setup, charging, Bluetooth pairing, music playback, wired audio input, and warranty information.</p>
	<p>Altec Lansing HydraShock IMW1500 Wireless Speaker Quick Start Guide</p> <p>A quick start guide for the Altec Lansing HydraShock IMW1500 Everythingproof Wireless Speaker, covering setup, features, and troubleshooting.</p>
	<p>Altec Lansing Jacket H2O III Rugged Bluetooth Speaker Quick Start Guide and Warranty</p> <p>Quick start guide and warranty information for the Altec Lansing Jacket H2O III rugged Bluetooth speaker. Learn about setup, pairing, features like waterproofing and stereo pairing, and understand the one-year limited warranty terms.</p>

Documents - Altec Lansing – MP450



[\[pdf\]](#) Instructions Documentation Guide

Microsoft Word Couverture notice1 page i775s08 MARQUE ALTEC LANSING REFERENCE ALT MP450 CODIC 1278410 NOTCOMP fc darty notices DOCUMENTATION |||

MARQUE: ALTEC LANSING REFERENCE: ALT_ **MP450** CODIC: 1278410 Altec Lansing Octiv Theater Speaker System for iPad Systme d enceinte pour iPad Altec Lansing Octiv Theater Sistema de parlantes Octiv Theater de Altec Lansing para iPad Altec Lansing Octiv Theater Sistema de alto-falantes para iPad User G...

lang:fr **score:38** filesize: 743.71 K page_count: 17 document date: 2011-08-26

ALWAYS THE BEST SEAT IN THE HOUSE: THE ALTEC LANSING OCTIV STAGE WINS FOR THE BEST SUPPORTING ROLE FOR THE iPad

The Octiv Stage (MP450) is the Ideal Docking Solution for iPad Users to Provide Enhanced Sound Quality and Multiple Screen Viewing Angles

MILFORD, PA - NOVEMBER 16, 2010 - Enhancing the iPad experience, audio innovator Altec Lansing today announced the new Octiv Stage docking speaker system for the iPad, iPhone and iPod. Designed to significantly enhance center channel viewing for dialogue as well as stereo audio while playing and charging the device, the Octiv Stage is the first product from Altec Lansing designed to support the iPad and showcase its unique capabilities for entertainment. With convenient design features, the Octiv Stage provides an exciting experience for watching and listening to content as well as a stylish home for the iPad.

"Users enjoy the iPad's great versatility for business, entertainment and sharing audio and video content. Now their experience will be significantly enhanced due to upgraded audio quality and sound distribution," said Steve Schragers, Altec Lansing product manager. "With very limited iPad accessory options on the market, Altec Lansing has created the perfect solution to hands-free viewing, greater sound delivery as well as charging capabilities all in one dock with the Octiv Stage."

Set the Stage: Superior Sound with a Thoughtful Design

The Octiv Stage allows users to dock and charge their iPad with the Apple 30-pin connector, while a 3.5mm auxiliary jack offers support for additional devices. Altec Lansing's Audio Alignment technology provides distinctive center channel viewing and enhanced stereo delivery for distortion-free performance even at full volume.

For a more pleasant viewing experience, the Octiv Stage features a unique rotating connection arm that allows the iPad to be viewed in both portrait and landscape positions and offers a tilt screen for multiple viewing angles and support while typing on the iPad. For added convenience, a full featured, wireless remote provides easy navigation from across the room.

CES Innovation Award Winner

The Octiv Stage has been awarded with the prestigious Innovation Design and Engineering Award from the Consumer Electronics Association. Based on engineering, quality, aesthetic design, user function and features, the Octiv Stage has been recognized for outstanding design and engineering in cutting edge consumer electronics products.

Availability and Pricing

The Altec Lansing Octiv Stage is available now at Apple Stores, www.alteclansing.com and other fine retailers. MSRP is \$149.95.

[pdf] Accessories

ALWAYS THE BEST SEAT IN HOUSE ALTEC LANSING OCTIV STAGE WINS FOR SUPPORTING ROLE iPad 1 Altec Lansing a Division of Plantronics Inc ddow 2010 11 16 alteclansing content ebiz resources images PressRelease

ALWAYS THE BEST SEAT IN THE HOUSE: THE ALTEC LANSING OCTIV STAGE WINS FOR THE BEST SUPPORTING ROLE FOR THE iPad The Octiv Stage **MP450** is the Ideal Docking Solution for iPad Users to Provide Enhanced Sound Quality and Multiple Screen Viewing Angles MILFORD, PA NOVEMBER 16, 2010 Enhancing the iPad...

lang:en score:35 filesize: 17.82 K page_count: 2 document date: 2010-11-19

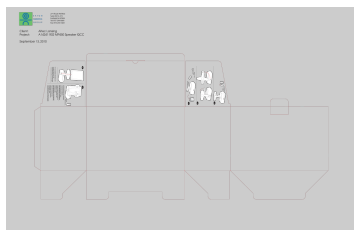


[pdf] Specifications Dimension Guide

mp450 sellsheet 1643 42522 alteclansing images spec

Play it. Charge it. Share it. Speaker and Charging Dock for iPad Now you can do other things while ... , LLC. All rights reserved. ALTEC, ALTEC LANSING, the Altec Lansing logo, Hear What's Next, Octiv, **MP450** are trademarks or registered trademarks of Altec Lansing LCC. iPhone, iPod, iPod nano, iPod t...

lang:en score:32 filesize: 552.63 K page_count: 2 document date: 2010-11-08



[pdf]

A14241 R02 AM MP450 GB QCC mp450 qcc 1646 42525 alteclansing images quick 271 Route 46 West Suite H212-215 Fairfield, NJ 07004 Tel: 973-244-0064 Fax: 973-244-1681 Client: Project: Altec Lansing A14241 R02 **MP450** Speaker QCC September 13, 2010 ...

lang:en score:29 filesize: 140.91 K page_count: 1 document date: 2010-09-13

Apple Inc.	
K-12 and Higher Education Institution Third-Party Products: Software Licensing and Hardware Price List APRIL 12, 2011	
Table of Contents	
Apple Inc.	Page
SECTION A: TABLE OF CONTENTS	1-2
SECTION B: SOFTWARE	3-11
SECTION C: HARDWARE	12-18
SECTION D: SERVICES	19-21
SECTION E: ACCESSORIES	22-24
SECTION F: OTHER	25-26
SECTION G: INDEX	27-28
SECTION H: ABOUT APPLE	29-30
SECTION I: CONTACT	31-32
SECTION J: LEGAL	33-34
SECTION K: APPENDIX	35-36
SECTION L: GLOSSARY	37-38
SECTION M: INDEX	39-40
SECTION N: ABOUT APPLE	41-42
SECTION O: CONTACT	43-44
SECTION P: LEGAL	45-46
SECTION Q: APPENDIX	47-48
SECTION R: GLOSSARY	49-50
SECTION S: INDEX	51-52
SECTION T: ABOUT APPLE	53-54
SECTION U: CONTACT	55-56
SECTION V: LEGAL	57-58
SECTION W: APPENDIX	59-60
SECTION X: GLOSSARY	61-62
SECTION Y: INDEX	63-64
SECTION Z: ABOUT APPLE	65-66
SECTION AA: CONTACT	67-68
SECTION AB: LEGAL	69-70
SECTION AC: APPENDIX	71-72
SECTION AD: GLOSSARY	73-74
SECTION AE: INDEX	75-76
SECTION AF: ABOUT APPLE	77-78
SECTION AG: CONTACT	79-80
SECTION AH: LEGAL	81-82
SECTION AI: APPENDIX	83-84
SECTION AJ: GLOSSARY	85-86
SECTION AK: INDEX	87-88
SECTION AL: ABOUT APPLE	89-90
SECTION AM: CONTACT	91-92
SECTION AN: LEGAL	93-94
SECTION AO: APPENDIX	95-96
SECTION AP: GLOSSARY	97-98
SECTION AQ: INDEX	99-100
SECTION AR: ABOUT APPLE	101-102
SECTION AS: CONTACT	103-104
SECTION AT: LEGAL	105-106
SECTION AU: APPENDIX	107-108
SECTION AV: GLOSSARY	109-110
SECTION AW: INDEX	111-112
SECTION AX: ABOUT APPLE	113-114
SECTION AY: CONTACT	115-116
SECTION AZ: LEGAL	117-118
SECTION BA: APPENDIX	119-120
SECTION BB: GLOSSARY	121-122
SECTION BC: INDEX	123-124
SECTION BD: ABOUT APPLE	125-126
SECTION BE: CONTACT	127-128
SECTION BF: LEGAL	129-130
SECTION BG: APPENDIX	131-132
SECTION BH: GLOSSARY	133-134
SECTION BI: INDEX	135-136
SECTION BJ: ABOUT APPLE	137-138
SECTION BK: CONTACT	139-140
SECTION BL: LEGAL	141-142
SECTION BM: APPENDIX	143-144
SECTION BN: GLOSSARY	145-146
SECTION BO: INDEX	147-148
SECTION BP: ABOUT APPLE	149-150
SECTION BQ: CONTACT	151-152
SECTION BR: LEGAL	153-154
SECTION BS: APPENDIX	155-156
SECTION BT: GLOSSARY	157-158
SECTION BU: INDEX	159-160
SECTION BV: ABOUT APPLE	161-162
SECTION BW: CONTACT	163-164
SECTION BX: LEGAL	165-166
SECTION BY: APPENDIX	167-168
SECTION BZ: GLOSSARY	169-170
SECTION CA: INDEX	171-172
SECTION CB: ABOUT APPLE	173-174
SECTION CC: CONTACT	175-176
SECTION CD: LEGAL	177-178
SECTION CE: APPENDIX	179-180
SECTION CF: GLOSSARY	181-182
SECTION CG: INDEX	183-184
SECTION CH: ABOUT APPLE	185-186
SECTION CI: CONTACT	187-188
SECTION CJ: LEGAL	189-190
SECTION CK: APPENDIX	191-192
SECTION CL: GLOSSARY	193-194
SECTION CM: INDEX	195-196
SECTION CN: ABOUT APPLE	197-198
SECTION CO: CONTACT	199-200
SECTION CP: LEGAL	201-202
SECTION CQ: APPENDIX	203-204
SECTION CR: GLOSSARY	205-206
SECTION CS: INDEX	207-208
SECTION CT: ABOUT APPLE	209-210
SECTION CU: CONTACT	211-212
SECTION CV: LEGAL	213-214
SECTION CW: APPENDIX	215-216
SECTION CX: GLOSSARY	217-218
SECTION CY: INDEX	219-220
SECTION CZ: ABOUT APPLE	221-222
SECTION DA: CONTACT	223-224
SECTION DB: LEGAL	225-226
SECTION DC: APPENDIX	227-228
SECTION DD: GLOSSARY	229-230
SECTION DE: INDEX	231-232
SECTION DF: ABOUT APPLE	233-234
SECTION DG: CONTACT	235-236
SECTION DH: LEGAL	237-238
SECTION DI: APPENDIX	239-240
SECTION DJ: GLOSSARY	241-242
SECTION DK: INDEX	243-244
SECTION DL: ABOUT APPLE	245-246
SECTION DM: CONTACT	247-248
SECTION DN: LEGAL	249-250
SECTION DO: APPENDIX	251-252
SECTION DP: GLOSSARY	253-254
SECTION DQ: INDEX	255-256
SECTION DR: ABOUT APPLE	257-258
SECTION DS: CONTACT	259-260
SECTION DT: LEGAL	261-262
SECTION DU: APPENDIX	263-264
SECTION DV: GLOSSARY	265-266
SECTION DW: INDEX	267-268
SECTION DX: ABOUT APPLE	269-270
SECTION DY: CONTACT	271-272
SECTION DZ: LEGAL	273-274
SECTION EA: APPENDIX	275-276
SECTION EB: GLOSSARY	277-278
SECTION EC: INDEX	279-280
SECTION ED: ABOUT APPLE	281-282
SECTION EE: CONTACT	283-284
SECTION EF: LEGAL	285-286
SECTION EG: APPENDIX	287-288
SECTION EH: GLOSSARY	289-290
SECTION EI: INDEX	291-292
SECTION EJ: ABOUT APPLE	293-294
SECTION EK: CONTACT	295-296
SECTION EL: LEGAL	297-298
SECTION EM: APPENDIX	299-300
SECTION EN: GLOSSARY	301-302
SECTION EO: INDEX	303-304
SECTION EP: ABOUT APPLE	305-306
SECTION EQ: CONTACT	307-308
SECTION ER: LEGAL	309-310
SECTION ES: APPENDIX	311-312
SECTION ET: GLOSSARY	313-314
SECTION EU: INDEX	315-316
SECTION EV: ABOUT APPLE	317-318
SECTION EW: CONTACT	319-320
SECTION EX: LEGAL	321-322
SECTION EY: APPENDIX	323-324
SECTION EZ: GLOSSARY	325-326
SECTION FA: INDEX	327-328
SECTION FB: ABOUT APPLE	329-330
SECTION FC: CONTACT	331-332
SECTION FD: LEGAL	333-334
SECTION FE: APPENDIX	335-336
SECTION FF: GLOSSARY	337-338
SECTION FG: INDEX	339-340
SECTION FH: ABOUT APPLE	341-342
SECTION FI: CONTACT	343-344
SECTION FJ: LEGAL	345-346
SECTION FK: APPENDIX	347-348
SECTION FL: GLOSSARY	349-350
SECTION FM: INDEX	351-352
SECTION FN: ABOUT APPLE	353-354
SECTION FO: CONTACT	355-356
SECTION FP: LEGAL	357-358
SECTION FQ: APPENDIX	359-360
SECTION FR: GLOSSARY	361-362
SECTION FS: INDEX	363-364
SECTION FT: ABOUT APPLE	365-366
SECTION FU: CONTACT	367-368
SECTION FV: LEGAL	369-370
SECTION FW: APPENDIX	371-372
SECTION FX: GLOSSARY	373-374
SECTION FY: INDEX	375-376
SECTION FZ: ABOUT APPLE	377-378
SECTION GA: CONTACT	379-380
SECTION GB: LEGAL	381-382
SECTION GC: APPENDIX	383-384
SECTION GD: GLOSSARY	385-386
SECTION GE: INDEX	387-388
SECTION GF: ABOUT APPLE	389-390
SECTION GG: CONTACT	391-392
SECTION GH: LEGAL	393-394
SECTION GI: APPENDIX	395-396
SECTION GJ: GLOSSARY	397-398
SECTION GK: INDEX	399-400
SECTION GL: ABOUT APPLE	401-402
SECTION GM: CONTACT	403-404
SECTION GN: LEGAL	405-406
SECTION GO: APPENDIX	407-408
SECTION GP: GLOSSARY	409-410
SECTION GQ: INDEX	411-412
SECTION GR: ABOUT APPLE	413-414
SECTION GS: CONTACT	415-416
SECTION GT: LEGAL	417-418
SECTION GU: APPENDIX	419-420
SECTION GV: GLOSSARY	421-422
SECTION GW: INDEX	423-424
SECTION GX: ABOUT APPLE	425-426
SECTION GY: CONTACT	427-428
SECTION GZ: LEGAL	429-430
SECTION HA: APPENDIX	431-432
SECTION HB: GLOSSARY	433-434
SECTION HC: INDEX	435-436
SECTION HD: ABOUT APPLE	437-438
SECTION HE: CONTACT	439-440
SECTION HF: LEGAL	441-442
SECTION HG: APPENDIX	443-444
SECTION HH: GLOSSARY	445-446
SECTION HI: INDEX	447-448
SECTION HJ: ABOUT APPLE	449-450
SECTION HK: CONTACT	451-452
SECTION HL: LEGAL	453-454
SECTION HM: APPENDIX	455-456
SECTION HN: GLOSSARY	457-458
SECTION HO: INDEX	459-460
SECTION HP: ABOUT APPLE	461-462
SECTION HQ: CONTACT	463-464
SECTION HR: LEGAL	465-466
SECTION HS: APPENDIX	467-468
SECTION HT: GLOSSARY	469-470
SECTION HU: INDEX	471-472
SECTION HV: ABOUT APPLE	473-474
SECTION HW: CONTACT	475-476
SECTION HX: LEGAL	477-478
SECTION HY: APPENDIX	479-480
SECTION HZ: GLOSSARY	481-482
SECTION IA: INDEX	483-484
SECTION IB: ABOUT APPLE	485-486
SECTION IC: CONTACT	487-488
SECTION ID: LEGAL	489-490
SECTION IE: APPENDIX	491-492
SECTION IF: GLOSSARY	493-494
SECTION IG: INDEX	495-496
SECTION IH: ABOUT APPLE	497-498
SECTION II: CONTACT	499-500
SECTION IJ: LEGAL	501-502
SECTION IK: APPENDIX	503-504
SECTION IL: GLOSSARY	505-506
SECTION IM: INDEX	507-508
SECTION IN: ABOUT APPLE	509-510
SECTION IO: CONTACT	511-512
SECTION IP: LEGAL	513-514
SECTION IQ: APPENDIX	515-516
SECTION IR: GLOSSARY	517-518
SECTION IS: INDEX	519-520
SECTION IT: ABOUT APPLE	521-522
SECTION IU: CONTACT	523-524
SECTION IV: LEGAL	525-526
SECTION IW: APPENDIX	527-528
SECTION IX: GLOSSARY	529-530
SECTION IY: INDEX	531-532
SECTION IZ: ABOUT APPLE	533-534
SECTION JA: CONTACT	535-536
SECTION JB: LEGAL	537-538
SECTION JC: APPENDIX	539-540
SECTION JD: GLOSSARY	541-542
SECTION JE: INDEX	543-544
SECTION JF: ABOUT APPLE	545-546
SECTION JG: CONTACT	547-548
SECTION JH: LEGAL	549-550
SECTION JI: APPENDIX	551-552
SECTION JJ: GLOSSARY	553-554
SECTION JK: INDEX	555-556
SECTION JL: ABOUT APPLE	557-558
SECTION JM: CONTACT	559-560
SECTION JN: LEGAL	561-562
SECTION JO: APPENDIX	563-564
SECTION JP: GLOSSARY	565-566
SECTION JQ: INDEX	567-568
SECTION JR: ABOUT APPLE	569-570
SECTION JS: CONTACT	571-572
SECTION JT: LEGAL	573-574
SECTION JU: APPENDIX	575-576
SECTION JV: GLOSSARY	577-578
SECTION JW: INDEX	579-580
SECTION JX: ABOUT APPLE	581-582
SECTION JY: CONTACT	583-584
SECTION JZ: LEGAL	585-586
SECTION KA: APPENDIX	587-588
SECTION KB: GLOSSARY	589-590
SECTION KC: INDEX	591-592
SECTION KD: ABOUT APPLE	593-594
SECTION KE: CONTACT	595-596
SECTION KF: LEGAL	597-598
SECTION KG: APPENDIX	599-600
SECTION KH: GLOSSARY	601-602
SECTION KI: INDEX	603-604
SECTION KJ: ABOUT APPLE	605-606
SECTION KK: CONTACT	607-608
SECTION KL: LEGAL	609-610
SECTION KM: APPENDIX	611-612
SECTION KN: GLOSSARY	613-614
SECTION KO: INDEX	615-616
SECTION KP: ABOUT APPLE	617-618
SECTION KQ: CONTACT	619-620
SECTION KR: LEGAL	621-622
SECTION KS: APPENDIX	623-624
SECTION KT: GLOSSARY	625-626
SECTION KU: INDEX	627-628
SECTION KV: ABOUT APPLE	629-630
SECTION KW: CONTACT	631-632
SECTION KX: LEGAL	633-634
SECTION KY: APPENDIX	635-636
SECTION KZ: GLOSSARY	637-638
SECTION LA: INDEX	639-640
SECTION LB: ABOUT APPLE	641-642
SECTION LC: CONTACT	643-644
SECTION LD: LEGAL	645-646
SECTION LE: APPENDIX	647-648
SECTION LF: GLOSSARY	649-650
SECTION LG: INDEX	651-652
SECTION LH: ABOUT APPLE	653-654
SECTION LI: CONTACT	655-656
SECTION LJ: LEGAL	657-658
SECTION LK: APPENDIX	659-660
SECTION LL: GLOSSARY	661-662
SECTION LM: INDEX	663-664
SECTION LN: ABOUT APPLE	665-666
SECTION LO: CONTACT	667-668
SECTION LP: LEGAL	669-670
SECTION LQ: APPENDIX	671-672
SECTION LR: GLOSSARY	673-674
SECTION LS: INDEX	675-676
SECTION LT: ABOUT APPLE	677-678
SECTION LU: CONTACT	679-680
SECTION LV: LEGAL	681-682
SECTION LW: APPENDIX	683-684
SECTION LX: GLOSSARY	685-686
SECTION LY: INDEX	687-688
SECTION LZ: ABOUT APPLE	689-690
SECTION MA: CONTACT	691-692
SECTION MB: LEGAL	693-694
SECTION MC: APPENDIX	695-696
SECTION MD: GLOSSARY	697-698
SECTION ME: INDEX	699-700
SECTION MF: ABOUT APPLE	701-702
SECTION MG: CONTACT	703-704
SECTION MH: LEGAL	705-706
SECTION MI: APPENDIX	707-708
SECTION MJ: GLOSSARY	709-710
SECTION MK: INDEX	711-712
SECTION ML: ABOUT APPLE	713-714
SECTION MM: CONTACT	715-716
SECTION MN: LEGAL	717-718
SECTION MO: APPENDIX	719-720
SECTION MP: GLOSSARY	721-722
SECTION MQ: INDEX	723-724
SECTION MR: ABOUT APPLE	725-726
SECTION MS: CONTACT	727-728
SECTION MT: LEGAL	729-730
SECTION MU: APPENDIX	731-732
SECTION MV: GLOSSARY	733-734
SECTION MW: INDEX	735-736
SECTION MX: ABOUT APPLE	737-738
SECTION MY: CONTACT	739-740
SECTION MZ: LEGAL	741-742
SECTION NA: APPENDIX	743-744
SECTION NB: GLOSSARY	745-746
SECTION NC: INDEX	747-748
SECTION ND: ABOUT APPLE	749-750
SECTION NE: CONTACT	751-752
SECTION NF: LEGAL	753-754
SECTION NG: APPENDIX	755-756
SECTION NH: GLOSSARY	757-758
SECTION NI: INDEX	759-760
SECTION NJ: ABOUT APPLE	761-762
SECTION NK: CONTACT	763-764
SECTION NL: LEGAL	765-766
SECTION NM: APPENDIX	767-768
SECTION NN: GLOSSARY	769-770
SECTION NO: INDEX	771-772
SECTION NP: ABOUT APPLE	773-774
SECTION NQ: CONTACT	775-776
SECTION NR: LEGAL	777-778
SECTION NS: APPENDIX	779-780
SECTION NT: GLOSSARY	781-782
SECTION NU: INDEX	783-784
SECTION NV: ABOUT APPLE	785-786
SECTION NW: CONTACT	787-788
SECTION NX: LEGAL	789-790
SECTION NY: APPENDIX	791-792
SECTION NZ: GLOSSARY	793-794
SECTION OA: INDEX	795-796
SECTION OB: ABOUT APPLE	797-798
SECTION OC: CONTACT	799-800
SECTION OD: LEGAL	801-802
SECTION OE: APPENDIX	803-804
SECTION OF: GLOSSARY	805-806
SECTION OG: INDEX	807

[illegible]

[Laptop Direct & ComX Computers Price Guide](#)

lang:en score:17 filesize: 7.37 M page_count: 2083 document date: 2023-07-20

lang:en score:10 filesize: 4.66 M page_count: 1444 document date: 2021-06-30