

Vtronix Q-338-F

Vtronix Universal A/C Remote Control

MODEL: Q-338-F USER MANUAL

Brand: Vtronix

1. Introduction

The Vtronix Q-338-F Universal A/C Remote Control is designed to replace damaged, lost, broken, or defective handheld remote controls for most window air conditioners and mini-split heating and cooling systems. This universal remote is compatible with over 200 different world-famous brands of air conditioner remote controls, offering a convenient solution for various AC units.

It features a large multi-function LCD screen for easy navigation and control. Fan options include automatic, manual, or normal fan modes with louver direction and sweep functions. The remote supports both Fahrenheit and Celsius temperature scales and operates using standard AAA batteries (not included).



Figure 1: Vtronix Q-338-F Universal A/C Remote Control in its retail packaging.

2. Key Features

- **Universal Compatibility:** Replaces over 200 different brands of air conditioner remote controls.
- **Multi-function LCD Screen:** Provides clear display of various menu and control functions.
- **Flexible Fan Modes:** Includes automatic, manual, and normal fan modes.
- **Louver Control:** Features louver direction and sweep functions for optimal air distribution.
- **Temperature Scale Options:** Supports both Fahrenheit and Celsius scales.
- **Easy Battery Replacement:** Uses standard AAA batteries.

3. Setup Guide

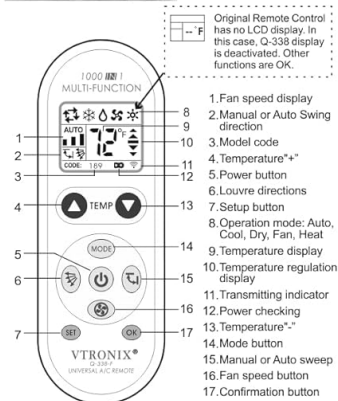
3.1. Battery Installation

1. Slide open the battery compartment cover located on the back of the remote control.
2. Insert two size AAA batteries, ensuring correct polarity (+/-).
3. Close the battery compartment cover. The LCD display will show on the left corner of the LCD display, indicating successful battery installation.

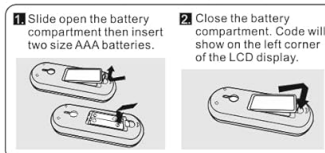
VTRONIX® Q-338-F

User's Guide

Panel description

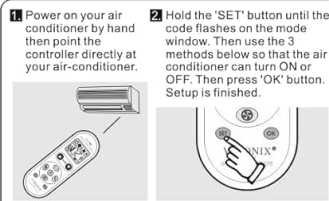


How to install the batteries



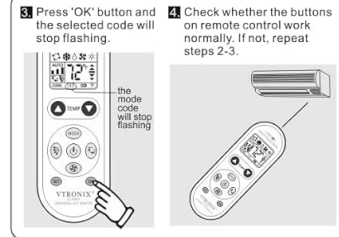
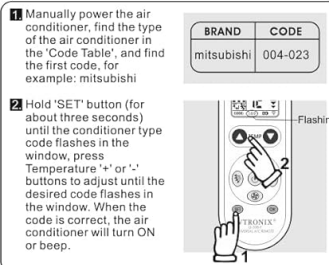
Setting of Remote Control

Three methods (Method A/B/C) are provided to set this remote control, any one of which can be used in operation.



Notice:
When the air conditioner can turn ON, OFF or beep, the code displayed on LCD is the proper code of your air conditioner.

A. Manually input code



B. Manually search for code

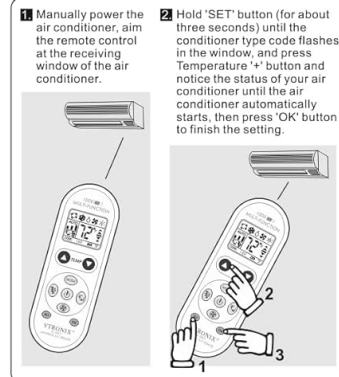


Figure 2: Steps for installing AAA batteries into the remote control.

3.2. Setting Control Code

Three methods (Method A/B/C) are provided to set this remote control. Choose one method to configure your remote.

Method A: Manual Code Input

1. Manually power on your air conditioner. Find the type of the air conditioner in the 'Code Table' (refer to the full user guide image for the table) and find the first code, for example, Mitsubishi 004-023.
2. Hold the 'SET' button for about three seconds until the code flashes in the window.
3. Press the 'Temperature +' or 'Temperature -' button to adjust until the desired code flashes in the window.
4. When the code is correct, the air conditioner will turn ON or BEEP.
5. Press 'OK' button and the selected code will stop flashing.
6. Check whether the buttons on the remote control work normally. If not, repeat steps 2-3.

C. Digital automatic search type

1. Manually power the air conditioner, aim the remote control at the receiving window of the air conditioner.

2. Hold 'SET' button (for about six seconds) until the conditioner type code changes in the window, indicating you have entered the high-speed conditioner type search status. Note the status of your air conditioner and press 'OK' button to stop search when the air conditioner automatically starts.

3. Test whether the functions of remote control buttons (excluding Temperature buttons, time ON/OFF buttons, and Set button) are correct. If yes, the code is correct and press 'OK' button to end the search. If not, press 'SET' button to continue the search.



Special Instructions

- Ensure that your air conditioner receiver is in working order. If your air conditioner is not receiving it properly, it will not be able to function with this remote control.
- Using the remote controller will not increase the functions of your air conditioner. For example: if your air conditioner does not have lower direction function, the lower direction button on this remote controller will not function with your air conditioner.
- Do not mix different type of batteries together.
- If the electrolyte inside the battery compartment should leak, wipe the contaminated area of battery compartment with a dry cloth and replace the old batteries with new ones.
- To prevent the electrolyte from leaking, remove the batteries when you plan not to use the controller for a long period of time.
- To reset the remote control, please remove the batteries and re-install the batteries an hour later.

Applicable brand and code list

ACSON	980	EMERALD	014,088,125,126,127,128,151,159,226,597	KTY003	287	SHINING	415
AIRWELL	926		845,846,882,924,936	KTY004	288	SHUANGLU	416-418,948,948
ATE	296-299		548,848,849,855	KTY005	289	SIGMA	447
AURA	796-797	FEDDERS	548,848,849,855	LEADER	921,971,973,994	SKYWORTH	877
ALPIN	889-891,998	FEIGE	829-830,821	LG	285,303,600-609	SOGO	291
AMANA	197,166,167,773	FEIU	243,249,413	LIANGYU	780-789	SONGGE	226,866,925
AMCOR	501,509,509,532,973,975,979	FERRIUT	901	LIKEAIR	395-397	SONGLINXIA	862
AMICO	582	FIRST	864	LILYTECH	918	SONXING	419
AOKI	301-302	FRESTECH	270-279,944,945	LITLESWAN	453,913,927	SOVA	292,420
ADLI	300	FRIEDRICH	879	LONGHE	891	SOVA	862-863
APTON	862	FUJITSU	257,700-719	LOREN-SEBO	801-803	SOYEA	421-422
AUCMA	210-229,933	FUNAI	246,248,258,267	MICQUAY	197,166,167,773,790-792	SPEED	387
AUX	180-199	FUNKI	992	MIDEA	040-058	SRTC	423
BAIKUE	299	GALANZ	124-129,134-149,936-940	MEILING	388-391	STARLIGHT	110,880
BEIJINGJINGDIAN	304	GEER	342,343	MIKKO	610-611	ARCON	
BEKOR CLASSIC	304	GENERAL	288	MITSUBISHI	551-559,909	STARWAY	172
BIG-THUMB	331	GLEE	280	NATIONAL	660-669,902,970	SUMMER	859,910
BLUE STAR	057,550,887	GOLDSTAR	303	NEC	500-550,860,943,948	SUNBURG	811-820
BOERNA	305-306,630	GOODMAN	197,166,167,773	NISKO	500-550,860,943,948	SUNDRUNG	260,268,804
BOERKA	630	GOODWEATHER	827	NISO	398-399,497	TADAR	501,508,509,532,630,985,975,979,991
BORLER	307	GREE	000,020,039	NORCA	994	TAIYA	862
BOSHI	310	GUANGDA	345-346	NOTRIZ	858,923	TATUNG	158,242,243
BOSHIGAO	308-309	GUANYUAN	997	OLIMPIA	824	TCL	120-133
BOYIN	290	HAIER	001-019	OPAL	995-996	TEAC	850-859,805
CAIXING	311	HEILTON	863	OLYMPUS	997	TECO	016,831-834
CARRIER	300,599,690-699,690-699	HICON	391-392	PANASONIC	660-669,902,970	TIANJIN	429
CASARTE	908	HISENSE	239-239	PANDA	464-466	TIANJIN	429
CHANGFENG	190	HITACHI	640-659	PEREG	998	TODD	250-259,915
CHANGFU	635-638,874,907	HONGYI	347	PILOT	902	TONGLI	429-430
CHANGHONG	059-079,934,947	HONGYI	347	PIYU	862	TOSHIBA	630-639
CHANGLING	312-323	HONGYI	347	QIXING	393	TOTALINE	548
CHENGYUAN	324	HUABAO	100-109	RAISONC	970	TRAIE	812-816,922
CHIGO	080-099,245	HUAGAO	348	RAYBO	371-383	UNI-AIR	388-389
CHUANGHUA	325-328	HUAKE	349-350	RESTPOINT	090	UTTEDUCK	454-456,909
CHUANJIAN	170-179	HUALING	159-169,045	RHOS	903	VIDECCON	597,627,628,629,884
COLROLLA	861	HUAMEI	351-352	ROWA	383-385	VOLTA	050,051,548,588,626
COMBINE	994	HUANGHE	353	RUJANG	395-397	WANBAO	431-433
CORONA	337-341	HUANGHE	353	SABON	161,197,240	WANZI	861
CONSUL	993	HUIFENG	354-356	SACON	414	WEILI	434-443,553-576
CORONA	760-769	JDC	227,244,653	SAJON DENKI	168,389,390,391,696,812,813,816	WHIRLPOOL	119,550,770-774,739
CROWN	861	JALE	358	SAMSUNG	010-029	WUFENG	445-446
DAKIN	740-759	JALINXING	359	SANYO	500-550,860,943,948	XILENG	448-449
DAJUNING	329-330	JINBEIUNG	361-362	SAPORO	861	XINGHE	462-463
DAKE	861	JINDA	491-492	SASAKI	820,911,912	XINHUABAO	290
DAOTIAN	622-623	JINSONG	363-365	SAST	450-452	XINLE	457-460
DELOINGHI	984	JINSTAR	360	SENGLING	949	XINLINGDI	461
DIV	044,090,092,095	JOHNSON	282	SENCOR	860	YAR	013-015,044,467-471
DONGXIA	334-335	JUHIA	869	SERENE	499	YAOHA	470-477
DONGXINBAO	260-268	KANGLI	368-370	SHAMEI	400	YIDONG	499
DONGXINBAO	357,360	KELONG	110-119,914	SHANGLING	403-409	YONGXIN	918
HUIFENG	336	KELONG	110-119,914	SHANXING	401-402	YORK	775-779
DUNAN	439	KONKA	366-367	SHANYE	862	YUETU	881-882,949
ELBA	439	KRIS	804	SHARP	240,720-739,917	YUTU	484-490
ELCO	982	KT02-D001	283	SHENG	412,413	ZHONGYI	493-494
ELDLONG	293-295,861	KT02-D002	284	SHENG	412,413	ZUODAN	495
ELECTER	581-686	KTY002	285	SHINCO	200-209	OTHER	496,498,921-928,839-840,865-876,905-976,999
ELECTROLUX	250-471,474,807,808,906						

※ This company reserves the right to interpretation of the User's Manual. Design and technical parameters may vary without notice.

1080101927

Figure 3: Detailed instructions for manually inputting the control code.

Method B: Manual Search for Code

1. Manually power the air conditioner.
2. Hold the 'SET' button (for about three seconds) until the conditioner type code flashes in the window.
3. Press the 'Temperature +' button and notice the status of your air conditioner until the air conditioner automatically starts.
4. Then press 'OK' button to finish the setting.

Method C: Digital Automatic Search Type

1. Manually power the air conditioner.
2. Hold the 'SET' button (for about six seconds) until the conditioner type code changes in the window, indicating you have entered the high-speed digital automatic search status.
3. Note the status of your air conditioner and press 'OK' button to stop when the air conditioner automatically starts.
4. Test whether the functions of remote control buttons (excluding Temperature buttons, Fan ON/OFF buttons, and Set button) are correct. If yes, the code is correct. If not, press 'SET' button to find the next search. If not, press 'SET' button to continue the search.

4. Operating Instructions

The remote control features a clear LCD display and intuitive buttons for various functions. Refer to the panel description below for an overview of the buttons and their corresponding functions.

C. Digital automatic search type

1. Manually power the air conditioner, aim the remote control at the receiving window of the air conditioner.

2. Hold "SET" button (for about six seconds) until the conditioner type code changes in the window, indicating you have entered the high-speed conditioner type search status. Note the status of your air conditioner and press "OK" button to stop search when the air conditioner automatically starts.

3. Test whether the functions of remote control buttons (excluding Temperature buttons, time ON/OFF buttons, and Set button) are correct. If yes, the code is correct and press "OK" button to end the search. If not, press "SET" button to continue the search.



Special Instructions

- Ensure that your air conditioner receiver is in working order. If your air conditioner is not receiving it properly, it will not be able to function with this remote control.
- Using the remote controller will not increase the functions of your air conditioner. For example: if your air conditioner does not have louver direction function, the louver direction button on this remote controller will not function with your air conditioner.
- Do not mix different type of batteries together.
- If the electrolyte inside the battery compartment should leak, wipe the contaminated area of battery compartment with a dry cloth and replace the old batteries with new ones.
- To prevent the electrolyte from leaking, remove the batteries when you plan not to use the controller for a long period of time.
- To reset the remote control, please remove the batteries and re-install the batteries an hour later.

Applicable brand and code list

ACSON	980	EMERALD	014,088,125,126,127, 128,151,159,226,597, 845,846,882,924,936, 937,948,949,955	KTY003	287	SHINING	415
AIRWELL	926			KTY004	288	SHUANGLU	416-418,948,948
ALTE	296-299			KTY005	289	SIGMA	447
AURA	786-797	FEDDERS	548,978,938,939,964	LEADER	921,971,973,994	SKYWORTH	877
ALPIN	889-891,998	FEIGE	829-830,821	LG	285,303,600-609	SOGO	291
AMANA	197,166,167,773	FEIU	243,249,413	LIANGYU	780-789	SONGSE	226,866,925
AMCOR	921,569,569,532,973, 975,979	FUNKI	901	LUKEAIR	395-397	SONGLINXIA	862
AMICO	982	FIRST	864	LILYTECH	918	SONXING	419
AOKI	301-302	FRESTECH	270-279,944,945	LITTLESWAN	453,913,927	SOVA	292-420
ADLI	300	FRIEDRICH	879	LONGHE	891	SOVIA	862-863
APTON	862	FUJITSU	257,700-719	LOREN-SEBO	801-803	SOYEA	421-422
AUCMA	210-229,933	FUNAI	246,248,258,267	MICQUAY	197,166,167,773,790- 795	SPEED	387
AUX	180-199	GALANZ	124-129,134-149,936- 940	MEILING	388-391	SRTC	423
BAUKJE	299			MIDEA	040-058	STARLIGHT	110,880
BEIJINGJINGDIAN	304	GEER	342,343	MINIKO	551-559,909	STARWAY	172
BEKO	882	GENERAL	288	MITSUBISHI	504	SUMMER	859,910
BEELCOR CLASSIC	793	GLEE	280	MITSUKA	660-669,902,970	SUNBURG	817-820
BIG-THUMB	331	GOLDSTAR	303	NATIONAL	500-550,860,943,948	SUNDRUNG	260,268,804
BLUE STAR	057,550,887	GOODMAN	197,166,167,773	NEC	500-550,860,943,948	TADAR	501,508,509,532,630, 985,975,975,991
BOERNA	305-306,630	GREE	000,020,039	NISKO	810-811	TAIYA	862
BOERKA	630	GOODWEATHER	827	NISQ	398-399,497	TATUNG	158,242,243
BORLER	307	GUANGDA	345-346	NORCA	994	TCL	120-133
BOSHI	310	GUANYUAN	997	NOTRIZ	858,923	TEAC	850-859,805
BOSHIGAO	308-309	GUJAO	344	OLIMPIA	824	TECO	015,831-834
BOYIN	290	HAIER	001-019	SPLENDIO	995-996	TIANJIN	429
CAIXING	311	HEILTON	863	OLYMPIUS	997	KONGTIAO	
CARRIER	300,599,690-699, 890- 899		014,088,125,126,127, 128,151,159,226,597, 845,846,882,924,936, 937,948,949,955	PANASONIC	660-669,902,970	TANYUAN	425-428
CASARTE	908	HICON	391-392	PANDA	464-466	TOTO	250-269,915
CHANGFENG	190	HISENSE	239-239	PEREG	998	TONGLI	429-430
CHANGFU	635-638,874,907	HITACHI	640-659	PILOT	902	TOSHIBA	630-639
CHANGHONG	059-079,934,947	HONGYI	347	PINSHANG	290	TOTALINE	548
CHANGLING	312-323	HONGYI	347	PUYI	862	TRANE	812-816,922
CHENGYUAN	324	HUABAO	100-109	QIXING	393	UNI-AIR	388-389
CHIGO	080-099,245	HUAGAO	348	RAISONC	970	UTTEDUCK	454-456,909
CHUANGHUA	325-328	HUAKE	349-350	RESTPOINT	090	VIDECCON	597,627,628,629,884, 995,957,545,598,626, 627,628,629
CHUANJIAN	861	HUAILING	159-160,045	RHOSIS	903	VOLTAIS	
COLROLLA	861	HUAMEI	351-352	RICAI	394	WANBAO	431-433
COMBINE	994	HUANGHE	353	RUJANG	395-397	WANGZI	861
CONROWA	337-341	HUAMEI	281	ROWA	383-385	WEILI	434-443,553-576
CONSUL	993	HUIFENG	354-356	SABRO	161,197,240	WEITEL	444
CORONA	760-769	HYUNDAI	780-789	SACON	414	WHIRLPOOL	119,550,770-774,739
CROWN	861	HYUN	475-483,826	SAJIO DENKI	168,389,390,391,696, 812,813,816	WUFENG	445-446
DAEWOO	332-333	JDC	227,244,653	SAMSUNG	500-550,860,943,948	XILENG	448-449
DAKIN	740-759	JALE	358	SANYO	500-550,860,943,948	XINGHE	462-463
DAJINXING	328-330	JINBEIUNG	361-382	SANZUO	190	XINHUABAO	290
DAKE	861	JINDA	491-492	SAPORO	861	XINLE	457-460
DAOTIAN	622-623	JINSONG	363-365	SASAKI	920,911,912	XINLING	461
DELOINGH	984	JMSTAR	282	SAST	450-452	XIONGDI	862
DY	044,090,092,095	JOHNSON	869	SENGLING	949	YAR	013-015,044,467-471
DONGXIA	260-268	JULIA	368-370	SENCOR	860	YAOA	470-977
DONGXINBAO	260-268	KANGLI	110-119,914	SERENE	499	YDONG	499
DONGYANG	357,360	KELONG	197,796,799,800	SHAMEI	400	YONGXIN	918
HUIFENG	439	KELIMATAR	366-367	SHANGLING	403-409	YORK	775-779
DUNAN	336	KONKA	804	SHANXING	401-402	YUETU	881-882,949
ELBA	439	KRIS	283	SHANYE	862	YUTU	484-490
ELCO	982	KT02-D001	284	SHARP	240,720-738,917	ZHONGYI	493-494
ELDLONG	293-295,861	KT02-D002	284	SHENG	410-411	ZHUODAN	495
ELECTER	581-686	KTY001	285	SHENGFEI	412,413	OTHER	496,498,921-928,839- 840,865-876,995, 976,999
ELECTROLUX	808,906	KTY002	286	SHINGO	200-209		

※ This company reserves the right to interpretation of the User's Manual. Design and technical parameters may vary without notice.

1080101927

Figure 4: Panel description highlighting the various buttons and their functions on the remote control.

Button Functions:

1. **Fan Speed Display:** Indicates the current fan speed setting.
2. **Manual or Auto Swing Direction:** Adjusts the louver swing.
3. **Model Code:** Displays the currently set model code.
4. **Temperature +/-:** Adjusts the temperature up or down.
5. **Power Button:** Turns the air conditioner ON/OFF.
6. **Louver Directions:** Controls the direction of the air louvers.
7. **Setup Button (SET):** Used for entering setup mode to program the remote.
8. **Operation Mode:** Cycles through Auto, Cool, Dry, Fan, Heat modes.
9. **Temperature Display:** Shows the current temperature setting.
10. **Temperature Regulation Display:** Indicates temperature regulation status.
11. **Transmitting Indicator:** Lights up when a signal is being sent.
12. **Power Checking:** Checks power status.
13. **Temperature +:** Increases temperature.
14. **Mode Button (MODE):** Changes the operating mode.
15. **Manual or Auto Sweep:** Toggles between manual and automatic louver sweep.
16. **Fan Speed Button (FAN):** Adjusts fan speed.
17. **Confirmation Button (OK):** Confirms selections during setup or operation.

5. Maintenance

- **Battery Replacement:** Replace batteries when the remote control's display becomes dim or the remote stops responding. Always use new AAA batteries and ensure correct polarity.

- **Cleaning:** Wipe the remote control with a soft, dry cloth. Do not use liquid cleaners or abrasive materials.
- **Storage:** If the remote will not be used for an extended period, remove the batteries to prevent leakage and damage.

6. Troubleshooting

- **Remote not working:** Ensure that your air conditioner receiver is in working order. If your air conditioner is not receiving the property, it will not be able to operate with this remote control.
- **Limited control functions:** Using the remote controller will not increase the functions of your air conditioner. For example, if your air conditioner does not have a swing direction function, the louver direction on this remote control will not work.
- **Remote not powering on/intermittent operation:** Do not mix different types of batteries together. Ensure batteries are inserted with correct polarity.
- **Battery leakage:** If the electrolyte inside the battery compartment should leak, wipe the contaminated area of the battery compartment with a dry cloth and replace the batteries with new ones.
- **Remote not responding after long storage:** To prevent the electrolyte from leaking, remove the batteries when you plan not to use the controller for a long period of time.
- **Remote needs re-programming:** To reset the remote, please remove the batteries and re-install the batteries an hour later.

7. Specifications

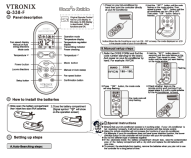


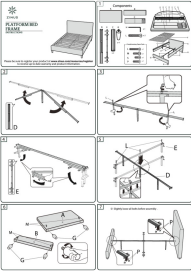
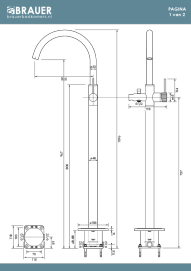
Brand	Vtronix
Model	Q-338-F
Product Dimensions	12.7 x 4.45 x 1.91 cm
Item Weight	90.7 g
Power Source	Battery Powered
Batteries Required	2 AAA batteries (not included)
Compatible Devices	Air Conditioner
Special Features	Universal
Connectivity Technology	Wireless

8. Warranty and Support

Specific warranty information for the Vtronix Q-338-F Universal A/C Remote Control is not provided in this manual. For warranty details, technical support, or further assistance, please refer to the product packaging or contact Vtronix customer service directly.

You may also visit the official Vtronix website for updated information or support resources.

Related Documents - Q-338-F

	<p>VTRONIX Q-338-F Universal Air Conditioner Remote Control User Guide</p> <p>User's guide for the VTRONIX Q-338-F universal air conditioner remote control, detailing panel functions, battery installation, setup procedures (auto-search and manual), and a comprehensive list of compatible brand codes.</p>
	<p>VTRONIX Q380-EW Wi-Fi Mini Split Remote Control Quick Start Guide</p> <p>A quick start guide for controlling the VTRONIX Q380-EW Wi-Fi enabled mini split remote control via the Genius Remote app. Includes setup instructions and power options.</p>
	<p>VTRONIX Q380-EW Quick Start Guide: Pairing Your Mini Split Remote</p> <p>Learn how to pair your VTRONIX Q380-EW Wi-Fi enabled remote control with your mini-split air conditioner or heat pump using this quick start guide. Includes code lists and troubleshooting tips.</p>
	<p>Zinus Platform Bed Frame Assembly Instructions</p> <p>Step-by-step instructions for assembling a Zinus upholstered platform bed frame, including component identification and assembly guidance.</p>
	<p>Brauer Stripe Freestanding Bath Mixer Tap with Hand Shower - Technical Specifications</p> <p>Detailed technical specifications and dimensions for the Brauer Stripe freestanding bath mixer tap, featuring a 3-function hand shower. Available in multiple PVD finishes including brushed gold, matte black, gunmetal, chrome, copper, and stainless steel. Includes diagrams and model information.</p>