

Waterstone 3200-PB



Waterstone Hunley Wall Mount Pot Filler Faucet

Model: 3200-PB

INTRODUCTION

Thank you for choosing the Waterstone Hunley Wall Mount Pot Filler Faucet. This manual provides essential information for the proper installation, operation, and maintenance of your new faucet. Please read these instructions carefully before beginning installation to ensure optimal performance and longevity of your product.



Image: Waterstone Hunley Wall Mount Pot Filler Faucet (Chrome finish).

This image displays the Waterstone Hunley Wall Mount Pot Filler Faucet in a polished chrome finish. The faucet features an articulated swing spout designed to extend over cooking surfaces, allowing for convenient pot filling directly on the stove.

PRODUCT FEATURES

The Waterstone Hunley Wall Mount Pot Filler Faucet is designed for convenience and durability in modern kitchens. Key features include:

- **Wall Mounted Design:** Installs directly above your stove for easy access.
- **Articulated Swing Spout:** Extends up to 22 inches to reach pots on both front and rear burners, then neatly folds away when not in use.
- **Single Lever Handle:** Provides simple and precise control of water flow.
- **Built-in Check Valve:** Prevents dripping and ensures reliable operation.
- **1/4 Turn Ceramic Disk Valve Cartridge:** Ensures smooth operation and long-term durability.
- **Aerated Water Stream:** Delivers a steady, splash-free flow.

- **Solid Brass or Stainless Steel Construction:** Guarantees a lifetime of durability and resistance to corrosion.
- **Compatibility:** Designed to be compatible with reverse osmosis filtration systems.
- **Finish:** Available in a variety of finishes, including Polished Brass and Chrome.
- **Made in the USA:** Proudly manufactured in the United States.

SPECIFICATIONS

Refer to the table below and the technical drawing for detailed product specifications and dimensions.

Attribute	Value
Brand	Waterstone
Model Number	3200-PB
Mounting Type	Wall Mount
Overall Height	8.25 inches
Spout Reach	22 inches (articulated)
Flow Rate	2.2 GPM (Gallons Per Minute)
Number of Handles	1 (Single Handle)
Valve Type	1/4 Turn Ceramic Disk
Material	Solid Brass or Stainless Steel
Item Weight	10 Pounds
Included Components	Handle
Applicable Standards	ASME A112.18.1, CSA B125.1, NSF 61, CalGreen, ADA



41180 Raintree Court
Murrieta, CA 92562
1-888-304-0660
www.waterstoneco.com

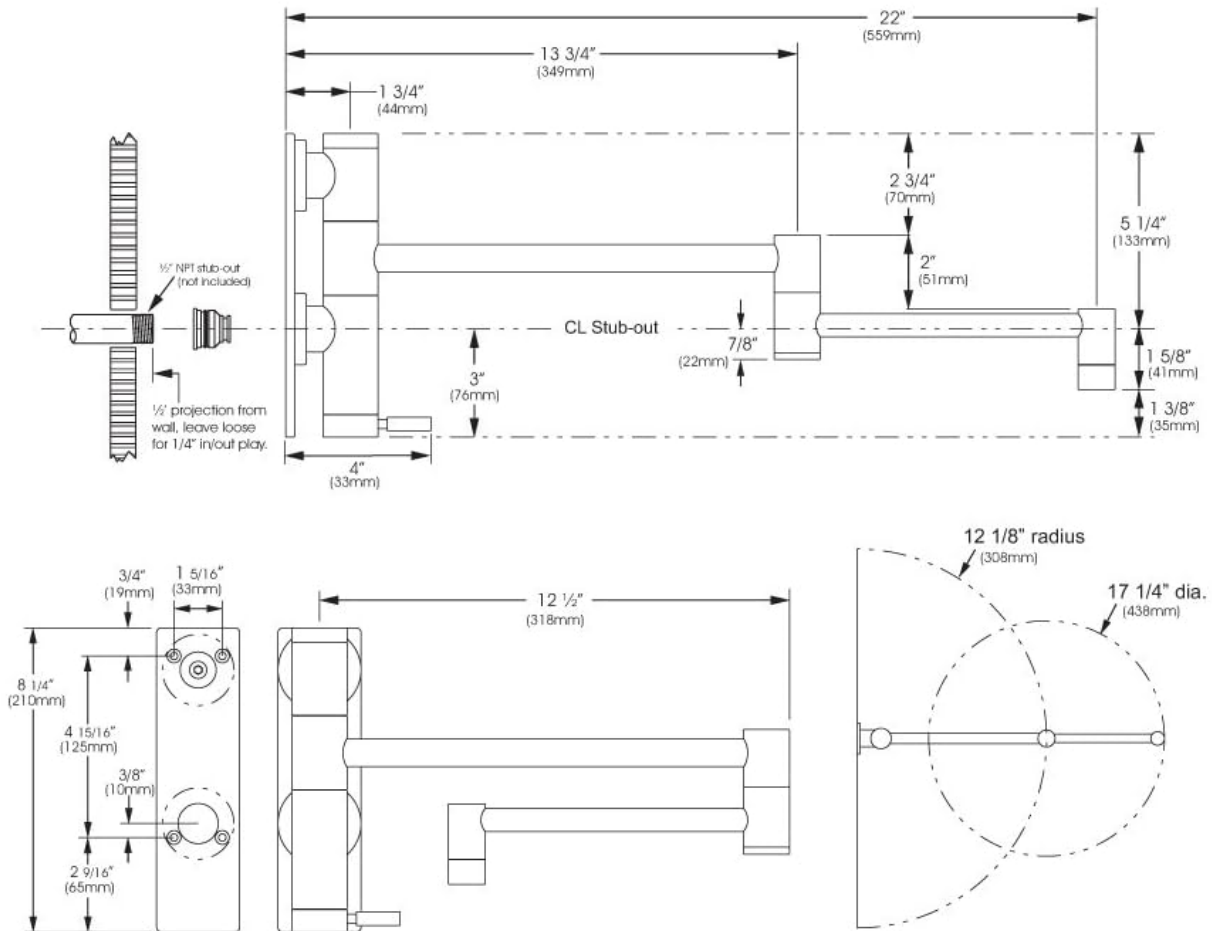
ITEM NO: **3200**

STYLE: **CONTEMPORARY**

INTENDED USE:
WALL MOUNTED POTFILLER

CUSTOMER NAME:

JOB NO:



Technical Specifications

- Solid brass or stainless steel construction.
- 1/4 turn ceramic disk valve cartridge.
- Lever handle.
- 1.75 gpm maximum flow rate.

Codes/Standards Applicable

Specified model meets or exceeds the following:

- ASME A112.18.1
- CSA B125.1
- NSF 61
- CALGreen
- ADA

DATE: 1-10-08



MADE IN THE USA

DIMENSIONS MAY VARY AND ARE SUBJECT TO CHANGE. NO RESPONSIBILITY IS ASSUMED FOR USE OF SUPERCEDED OR VOIDED DATA

Image: Technical drawing with dimensions and specifications for the Waterstone 3200 Pot Filler.

This diagram provides detailed measurements for installation, including overall height, spout reach, and mounting dimensions. It also lists technical specifications and applicable codes/standards.

INSTALLATION INSTRUCTIONS

Professional installation is recommended for this product. Ensure all local plumbing codes are followed.

Before You Begin:

- Turn off the main water supply to the installation area.
- Clear the installation area above your stove.
- Gather all necessary tools (e.g., wrench, pipe sealant, measuring tape, level).
- Inspect the product for any damage prior to installation.

Mounting Steps:

1. Identify the desired mounting location above your stove. Ensure it is structurally sound and can support the faucet's weight and operation.
2. Refer to the technical drawing (see Specifications section) for precise dimensions and rough-in requirements. The faucet requires a cold water hookup.
3. Install the wall-mounted base according to the diagram, ensuring it is level and securely fastened to the wall studs or appropriate blocking.
4. Connect the cold water supply line to the faucet's inlet. Use appropriate pipe sealant or Teflon tape on threaded connections to prevent leaks.
5. Attach the faucet body to the wall-mounted base, ensuring all connections are tight.
6. Carefully turn on the main water supply and check for any leaks.
7. Test the faucet's operation, extending and retracting the spout to ensure smooth movement.

Important Note: The faucet is designed for cold water hookup only. Ensure the water supply is clean and free of debris before connecting.

OPERATION

The Waterstone Hunley Pot Filler Faucet is designed for simple and efficient operation.

1. **Extend the Spout:** Gently pull the articulated spout arm away from the wall and extend it over the pot you wish to fill. The spout can reach up to 22 inches.
2. **Turn On Water:** Rotate the single lever handle to turn on the water flow. The 1/4 turn ceramic disk valve allows for quick and precise control.
3. **Fill Pot:** Fill your pot to the desired level. The aerated stream ensures a smooth, splash-free fill.
4. **Turn Off Water:** Rotate the lever handle back to the off position. The built-in check valve prevents any residual dripping.
5. **Retract Spout:** Gently fold the articulated spout arm back towards the wall until it is neatly tucked away.

Always ensure the spout is fully retracted when not in use to prevent accidental activation or obstruction.

CARE AND CLEANING

Proper care and cleaning will help maintain the beauty and longevity of your Waterstone faucet's finish.

About Your Finish:

Waterstone finishes are designed for durability. Regular cleaning is recommended. Avoid abrasive cleaners, clothes, or pads that can scratch the finish. Trapped moisture on the surface can lead to staining. Astringent cleaners, chlorine, bleach, and acidic based organic cleansers are potentially harmful. Chrome plated finishes are very tarnish resistant.

Suggested Finish Maintenance Procedures:

1. Do not allow water spots to dry on the fixture.
2. Periodic cleaning can be done by applying denatured isopropyl alcohol with a soft clean cloth to gently remove

surface spots.

3. Never use cleaners with abrasives, soft scrub, Clorox, or any type of abrasive pad or sponge.

IMPORTANT NOTICE: It is the responsibility of the customer to check for any material finish defects before installation.

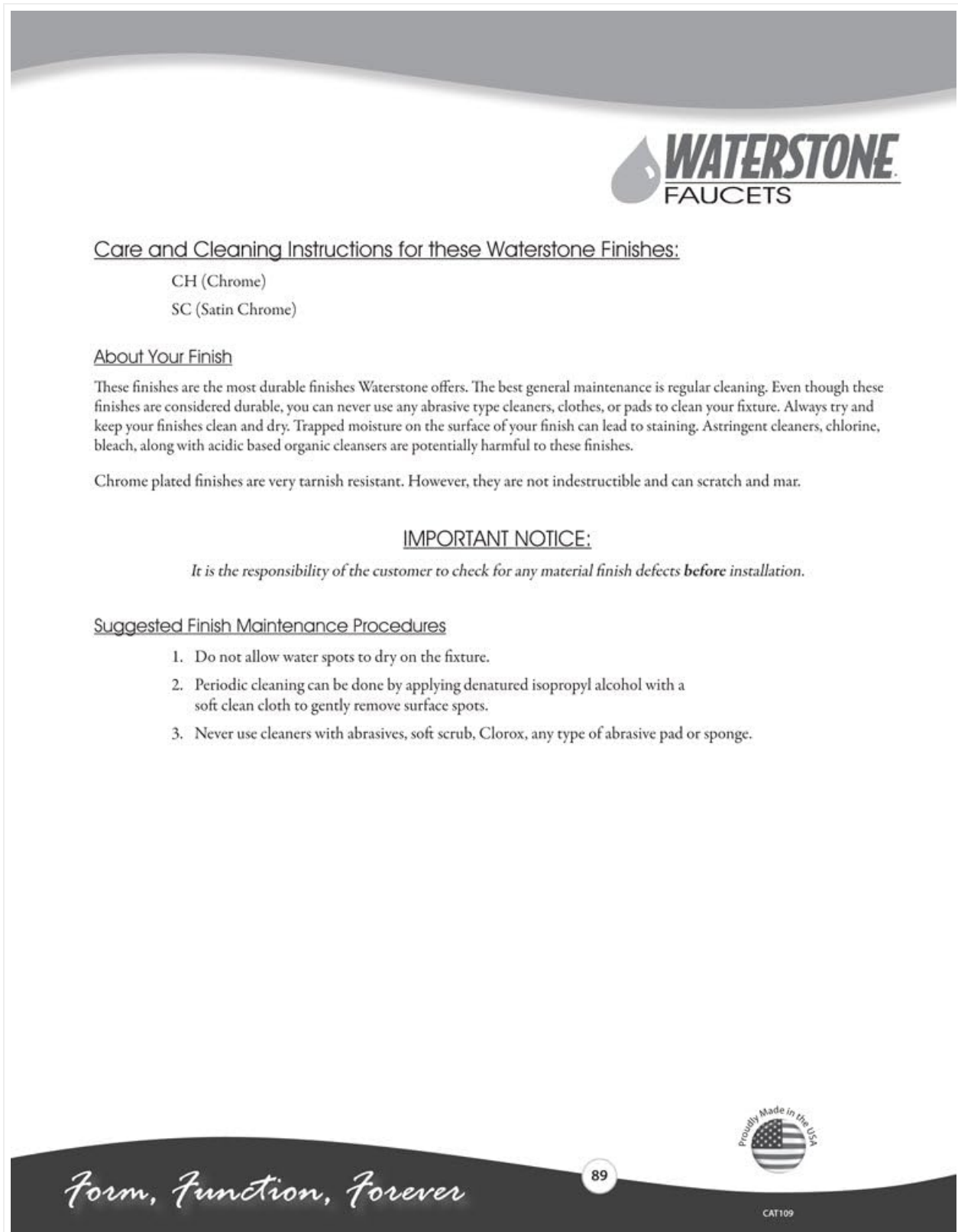


Image: Waterstone Faucets Care and Cleaning Instructions.

This image provides detailed guidelines for maintaining the finish of your Waterstone faucet, emphasizing the use of gentle cleaning methods and avoiding harsh chemicals.

If you encounter any issues with your Waterstone Hunley Pot Filler Faucet, please refer to the following common troubleshooting tips. For problems not listed here, or if issues persist, contact Waterstone customer support.

Problem	Possible Cause	Solution
Low Water Flow	Partially closed shut-off valve; Clogged aerator; Debris in water line.	Ensure shut-off valve is fully open. Unscrew and clean the aerator. Flush water lines before reattaching faucet.
Leaking from Spout	Worn O-rings; Damaged ceramic disk cartridge.	Contact Waterstone customer support for replacement parts or professional assistance.
Difficulty Moving Spout	Accumulation of mineral deposits or debris in joints.	Clean joints with a soft cloth and mild cleaner. Avoid forcing the spout.
Waterstone Faucet Warranty Voided	Use of an in-line water chiller unit with the faucet.	Waterstone recommends installing water chillers in the vented side (e.g., hot tank) of Hot & Cold Filtration faucet models, not in-line with this pot filler.

WARRANTY INFORMATION

All Waterstone products are manufactured with high standards and carry a Limited Lifetime Guarantee against functional defects in material or workmanship in a residential application.

For complete information about your warranty, please consult with an authorized Waterstone dealer or contact Waterstone directly.

WARNING: Since 2005, Waterstone has advised customers against the installation of any brand of in-line water chiller unit with their faucets. Compressor style chiller units have been proven to arbitrarily exceed standard household in-line pressure ratings, potentially causing the faucet inlet connection line to burst and creating the potential for water damage claims.

USE OF AN IN-LINE INSTALLATION OF A WATER CHILLER WITH A WATERSTONE FAUCET OF ANY KIND WILL VOID YOUR WARRANTY.

Waterstone will only recommend the installation of a water chiller in the vented side (in place of a hot tank) with one of their Hot & Cold Filtration faucet models.

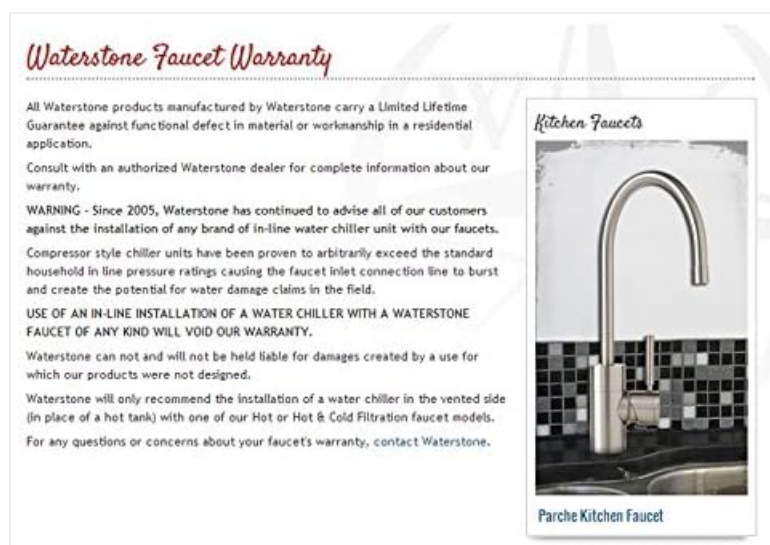


Image: Waterstone Faucet Warranty information.

This image outlines the limited lifetime guarantee and provides a critical warning regarding the use of in-line water chiller units, which can void the product warranty.

SUPPORT AND CONTACT INFORMATION

For any questions, technical assistance, or warranty claims, please contact Waterstone Faucets directly.

Website: www.waterstoneco.com

Address: 41180 Raintree Court, Murrieta, CA 92562

Phone: 1-888-304-0660

Please have your model number (3200-PB) and purchase date ready when contacting support.

© 2023 Waterstone Faucets. All rights reserved.

This manual is for informational purposes only. Specifications are subject to change without notice.