

Panasonic WER221S7408

Panasonic WER221S7408 Replacement Combs Instruction Manual

For Panasonic ER-2201, ER-220, and ER-221 Trimmers

[Introduction](#)

[Safety Information](#)

[Setup](#)

[Maintenance](#)

[Specifications](#)

1. INTRODUCTION

This instruction manual provides essential information for the proper use and maintenance of your Panasonic WER221S7408 replacement combs. These combs are specifically designed for use with Panasonic ER-2201, ER-220, and ER-221 hair trimmers. Please read this manual thoroughly before use to ensure safe and effective operation.

Package Contents

- 1 x Panasonic WER221S7408 Replacement Comb

2. SAFETY INFORMATION

Important Warnings: Always read the label, warnings, and instructions provided on the product packaging before using or consuming any product. The information on the product packaging may differ from what is presented online. Ensure the comb is securely attached to the trimmer before operation. Do not force the comb onto the trimmer if it does not fit easily. Keep out of reach of children.

3. SETUP AND INSTALLATION

This section details how to properly attach the replacement comb to your Panasonic ER-2201, ER-220, or ER-221 trimmer.

Attaching the Comb

1. Ensure your trimmer is turned off and unplugged from any power source.
2. If an old comb is present, gently remove it by pushing it upwards or outwards, depending on your trimmer model's

design. Refer to your trimmer's original manual for specific removal instructions.

3. Align the new Panasonic WER221S7408 replacement comb with the trimmer head. The comb has specific grooves that should match the corresponding slots on the trimmer.
4. Gently push the comb down or slide it into place until you hear a click, indicating it is securely fastened. Do not apply excessive force.
5. Visually inspect the comb to ensure it is firmly attached and does not wobble.



Image 1: Side view of the Panasonic WER221S7408 replacement comb, showing its general shape and teeth structure. This view helps in identifying the correct orientation for attachment.



Image 2: Underside view of the Panasonic WER221S7408 replacement comb, illustrating the internal clips and guides that connect to the trimmer head. This helps in understanding how the comb locks into place.

4. OPERATING INSTRUCTIONS

Once the comb is securely attached, you can use your trimmer as intended. The comb guides the hair to be cut at a uniform length.

1. Ensure the comb is correctly installed and locked onto the trimmer head.
2. Turn on your Panasonic trimmer.
3. Gently place the comb flat against the skin or hair, moving it against the direction of hair growth for an even cut.
4. Adjust the cutting length setting on your trimmer if it has adjustable features. The comb itself provides a fixed guide for the blades.
5. After use, turn off and unplug the trimmer.

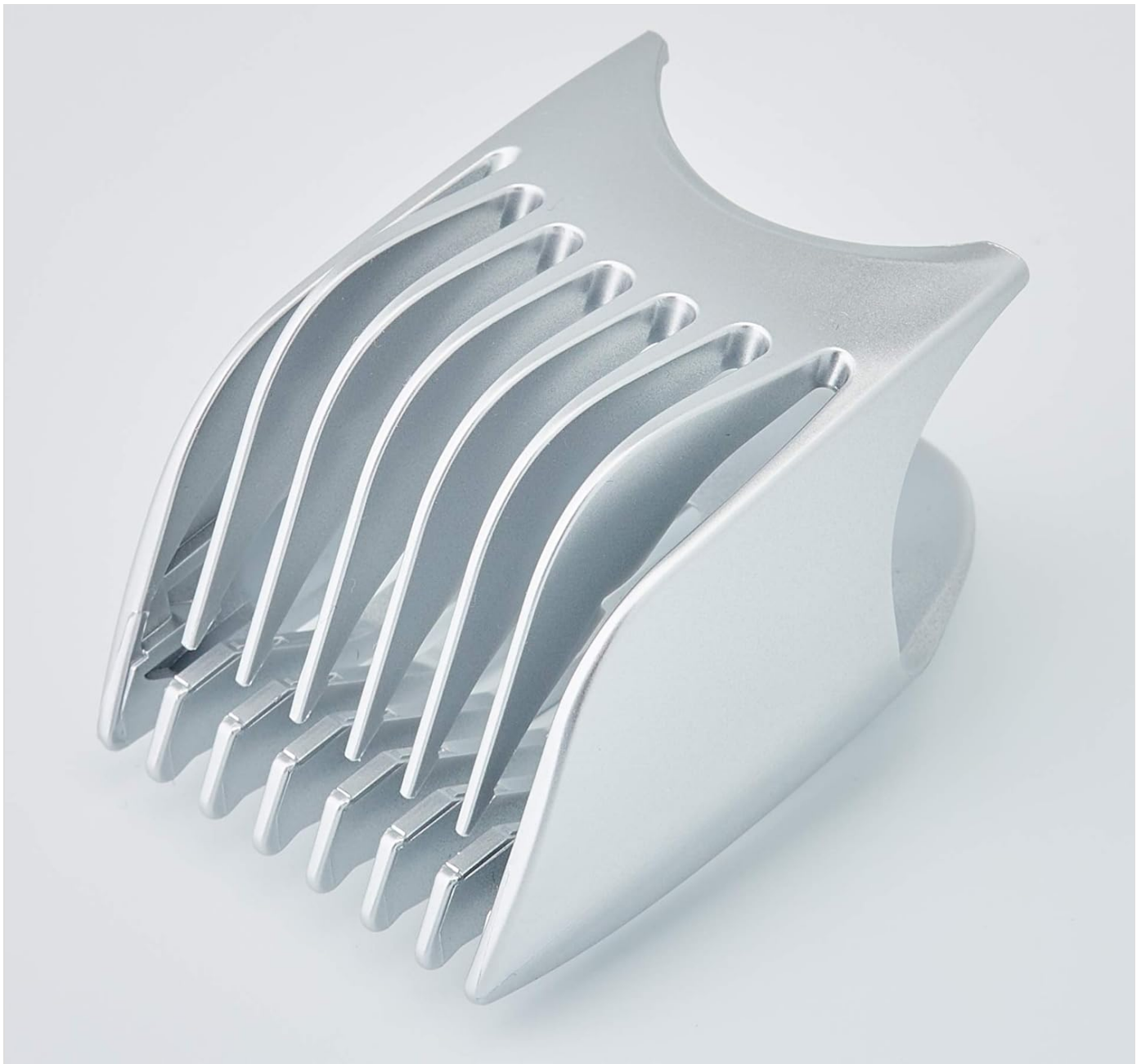


Image 3: Top-down view of the Panasonic WER221S7408 replacement comb, showing the spacing of the teeth. This perspective is useful for understanding how hair passes through the comb for cutting.

5. MAINTENANCE AND CLEANING

Regular cleaning of the comb ensures optimal performance and extends its lifespan.

1. After each use, turn off and unplug your trimmer.
2. Carefully remove the comb from the trimmer head.
3. Use a small brush (often supplied with trimmers) to remove any trapped hair from the comb's teeth and internal structure.
4. Rinse the comb under running water to remove any remaining debris. Ensure the comb is completely dry before reattaching it to the trimmer or storing it.
5. Do not use harsh chemicals or abrasive cleaners on the comb, as this may damage the material.

6. TROUBLESHOOTING

If you encounter issues with your replacement comb, refer to the following common solutions:

Problem	Possible Cause	Solution
Comb does not attach securely.	Incorrect alignment or debris in attachment points.	Ensure the comb is correctly aligned with the trimmer head. Check for and remove any hair or debris from the attachment slots on both the comb and the trimmer.
Hair is not cut evenly.	Comb not fully seated or damaged teeth.	Verify the comb is securely attached. Inspect the comb for any broken or bent teeth. If damaged, replace the comb.
Comb feels stiff or difficult to remove.	Accumulated hair or product residue.	Clean the comb thoroughly as described in the Maintenance section. Ensure all hair and residue are removed from the attachment points.

7. SPECIFICATIONS

Feature	Detail
Model Number	WER221S7408 (Article Number: K-4664)
Brand	Panasonic
Compatibility	Panasonic ER-2201, ER-220, ER-221 Trimmers
Dimensions (L x W x H)	7.01 x 5.99 x 5 cm (approximately 2.8 x 2.4 x 2 inches)
Weight	29 grams
Quantity	1 Count
Manufacturer	Fripac-Medis GmbH



Image 4: Visual representation of the comb's dimensions, indicating a length of approximately 7 cm (2.8 inches).

8. WARRANTY AND SUPPORT

For warranty information or technical support regarding your Panasonic WER221S7408 replacement combs, please refer to the official Panasonic website or contact their customer service directly. Keep your purchase receipt as proof of

purchase.

Manufacturer: Fripac-Medis GmbH

Brand: Panasonic

