

## Siena Garden 378806

# Siena Garden Antico Fire Pit Instruction Manual

Model: 378806

Brand: Siena Garden

## 1. SAFETY INFORMATION

---

**WARNING:** Always read and understand all safety warnings and instructions before using this fire pit. Failure to follow these instructions may result in fire, explosion, serious injury, or property damage.

- Keep away from flammable materials. Ensure a safe distance from buildings, trees, and other combustible items.
- Use only charcoal as fuel. Do not use gasoline, kerosene, diesel fuel, lighter fluid, or alcohol to light or relight fires.
- Never leave a burning fire pit unattended.
- Keep children and pets away from the fire pit.
- Do not use the fire pit on wooden decks or other combustible surfaces.
- Ensure the fire pit is placed on a stable, level, non-combustible surface.
- Allow the fire pit to cool completely before moving or cleaning.
- Have a fire extinguisher or water source readily available.

## 2. SETUP AND ASSEMBLY

---

The Siena Garden Antico Fire Pit requires minimal assembly. Follow these steps to set up your fire pit safely and correctly.

### 2.1 Unpacking

1. Carefully remove all components from the packaging.
2. Verify that all parts are present and undamaged. Refer to the parts list (if provided in original packaging).

### 2.2 Assembly Steps

1. **Attach the Legs:** Position the fire bowl upside down on a soft, non-abrasive surface to prevent scratches. Align the legs with the pre-drilled holes on the underside of the fire bowl. Secure each leg using the provided screws and tools. Ensure all connections are tight and stable.

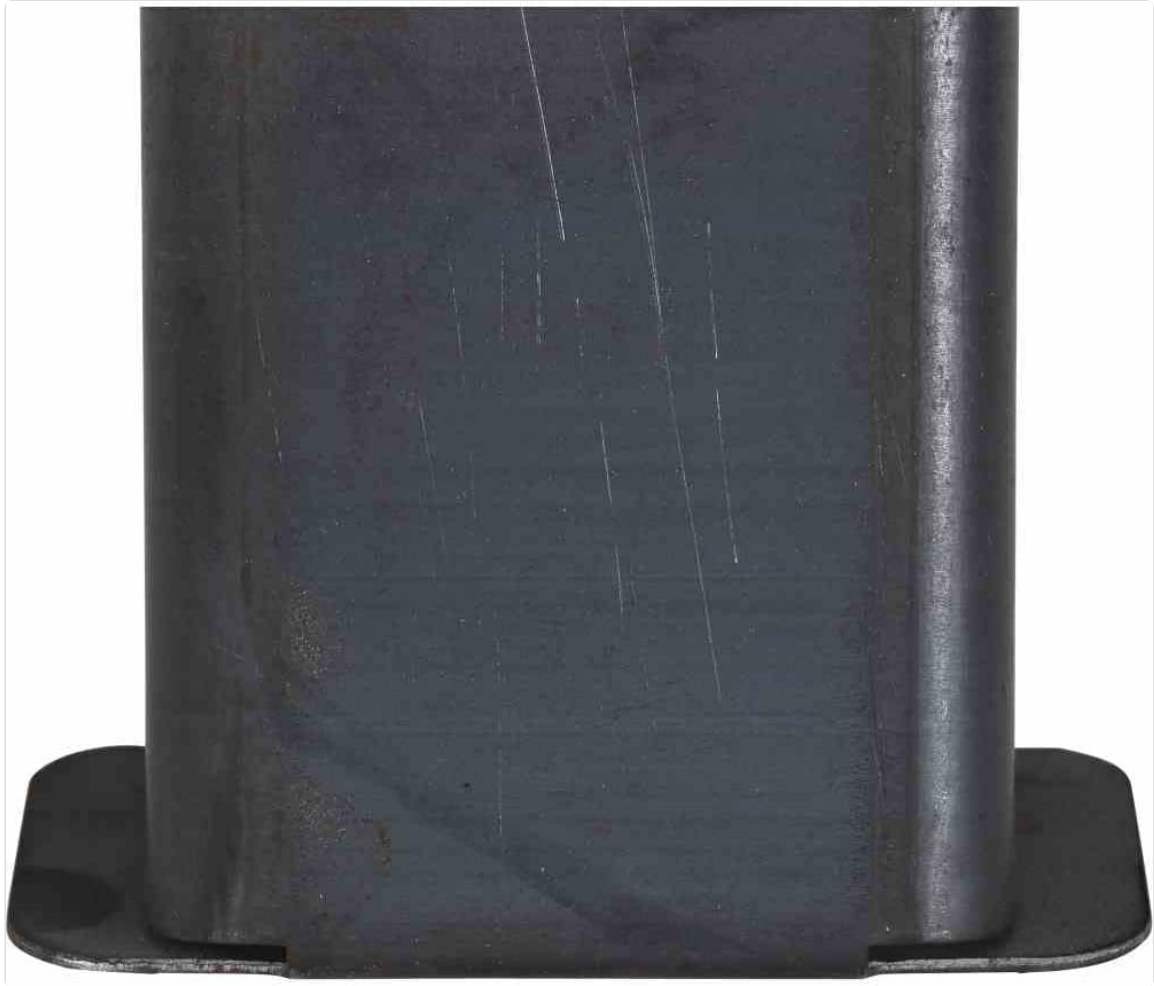


Figure 1: Close-up view of a fire pit leg, illustrating how it attaches to the main bowl structure.

Your browser does not support the video tag.

Video 1: This video demonstrates the assembly process of a fire pit, including attaching the legs to the bowl. Note that the specific model shown may vary slightly, but the general assembly principles apply.

- 2. Attach Handles (if applicable):** If your model includes separate handles, attach them to the sides of the fire bowl using the designated attachment points and hardware.



Figure 2: Detail of a sturdy metal handle integrated into the fire pit's bowl, designed for safe handling when cool.

3. **Position the Fire Pit:** Once assembled, place the fire pit on a flat, stable, non-combustible surface, ensuring it is away from any flammable materials or structures.



Figure 3: The Siena Garden Antico Fire Pit fully assembled and ready for use in an outdoor setting.

### 3. OPERATING INSTRUCTIONS

---

Follow these guidelines for safe and effective operation of your Siena Garden Antico Fire Pit.

#### 3.1 Fuel Type

This fire pit is designed for use with **charcoal only**. Do not use wood, paper, or any other combustible materials as fuel. Using incorrect fuel can lead to excessive heat, sparks, and potential damage or injury.

#### 3.2 Lighting the Fire Pit

1. Ensure the fire pit is on a stable, non-combustible surface, away from any flammable objects.
2. Place a small amount of charcoal in the center of the fire pit bowl.
3. Use a long-stemmed lighter or fire starter to ignite the charcoal. Do not use flammable liquids.
4. Allow the charcoal to fully ignite and develop a consistent glow before adding more.
5. Add additional charcoal as needed, ensuring not to overfill the bowl.

#### 3.3 During Operation

- Always supervise the fire pit when in use.
- Keep a safe distance from the flames and hot surfaces.
- Do not attempt to move the fire pit while it is hot or contains burning materials.

- Be aware of wind conditions, as strong winds can spread embers.

### 3.4 Extinguishing the Fire

- Allow the charcoal to burn down naturally.
- Once the flames have subsided, carefully douse any remaining embers with water. Ensure all embers are completely extinguished before leaving the fire pit unattended.
- Do not cover the fire pit until it has completely cooled down.

## 4. MAINTENANCE

---

Regular maintenance will prolong the life of your Siena Garden Antico Fire Pit.

### 4.1 Cleaning

- Ensure the fire pit is completely cool before cleaning.
- Remove all ash and debris from the bowl. The fire pit features a drainage hole to prevent water accumulation.



Figure 4: A small drainage hole located at the base of the fire pit bowl, designed to prevent water buildup.

- Wipe down the exterior surfaces with a damp cloth. Avoid abrasive cleaners or brushes that could damage the finish.
- For stubborn stains, use a mild soap solution and rinse thoroughly.

### 4.2 Storage

- Store the fire pit in a dry, covered area when not in use, especially during adverse weather conditions or prolonged periods of inactivity.
- Consider using a weather-resistant cover to protect it from elements.

### 4.3 Rust Prevention

The fire pit is made of steel alloy, which can develop a natural patina or surface rust over time, especially when exposed to moisture. This is a normal characteristic of the material and does not affect its functionality. To

minimize rust, keep the fire pit dry and covered when not in use.

## 5. TROUBLESHOOTING

If you encounter issues with your fire pit, refer to the following common problems and solutions.

Problem	Possible Cause	Solution
Difficulty lighting charcoal	Charcoal is damp; insufficient kindling; windy conditions.	Use dry charcoal. Ensure proper air circulation. Shield from strong winds. Use a charcoal starter.
Excessive smoke	Using incorrect fuel (e.g., wood); charcoal not fully ignited; poor air circulation.	Only use charcoal. Ensure charcoal is fully lit before adding more. Do not overfill.
Fire pit unstable after assembly	Legs not securely tightened; uneven ground.	Check and tighten all leg screws. Move the fire pit to a flat, level surface.
Surface rust appearing	Natural oxidation of steel alloy due to moisture exposure.	This is normal for steel products. To minimize, keep dry and covered when not in use. Light surface rust can be gently removed with a wire brush and then treated with a high-temperature paint if desired.

## 6. SPECIFICATIONS

<b>Model Number</b>	378806
<b>Brand</b>	Siena Garden
<b>Material</b>	Steel Alloy
<b>Color</b>	Anthracite
<b>Dimensions (Diameter)</b>	55 cm
<b>Weight</b>	6.6 kg
<b>Shape</b>	Round