

ProTech 62-24268-03

Protech 62-24268-03 Integrated Furnace Control Board Instruction Manual

Model: 62-24268-03 | Brand: ProTech

1. INTRODUCTION

This manual provides essential information for the safe and effective installation, operation, and maintenance of the Protech 62-24268-03 Integrated Furnace Control Board. This control board is designed to manage the various functions of a furnace, ensuring proper heating system performance. Please read all instructions thoroughly before proceeding with any installation or service.

2. IMPORTANT SAFETY INFORMATION

WARNING: Improper installation, adjustment, alteration, service, or maintenance can cause property damage, personal injury, or loss of life. Installation and service must be performed by a qualified installer, service agency, or the gas supplier.

- Always disconnect electrical power to the furnace before servicing.
- Ensure gas supply is turned off before working on gas components.
- Wear appropriate personal protective equipment (PPE) during installation and service.
- Verify all wiring connections are secure and correct according to the wiring diagram.
- Do not bypass any safety devices.
- Keep the area around the furnace clear of combustible materials.

3. PRODUCT OVERVIEW

The Protech 62-24268-03 is an integrated furnace control board designed for specific Rheem/Ruud furnace models. It serves as the central control unit for the furnace's operational sequences, including ignition, flame sensing, and blower motor control.

3.1 Kit Contents

This kit typically includes the following components:

- 1 x 62-102635-01 Integrated Furnace Control Board
- 1 x 90-24314-04 Wiring Diagram
- 1 x 92-26177-555 Instruction Sheet
- 1 x AS-50208-31-CY Wire Assembly

3.2 Product Dimensions

The control board measures approximately 8.8 inches (L) x 2.4 inches (W) x 7.4 inches (H).

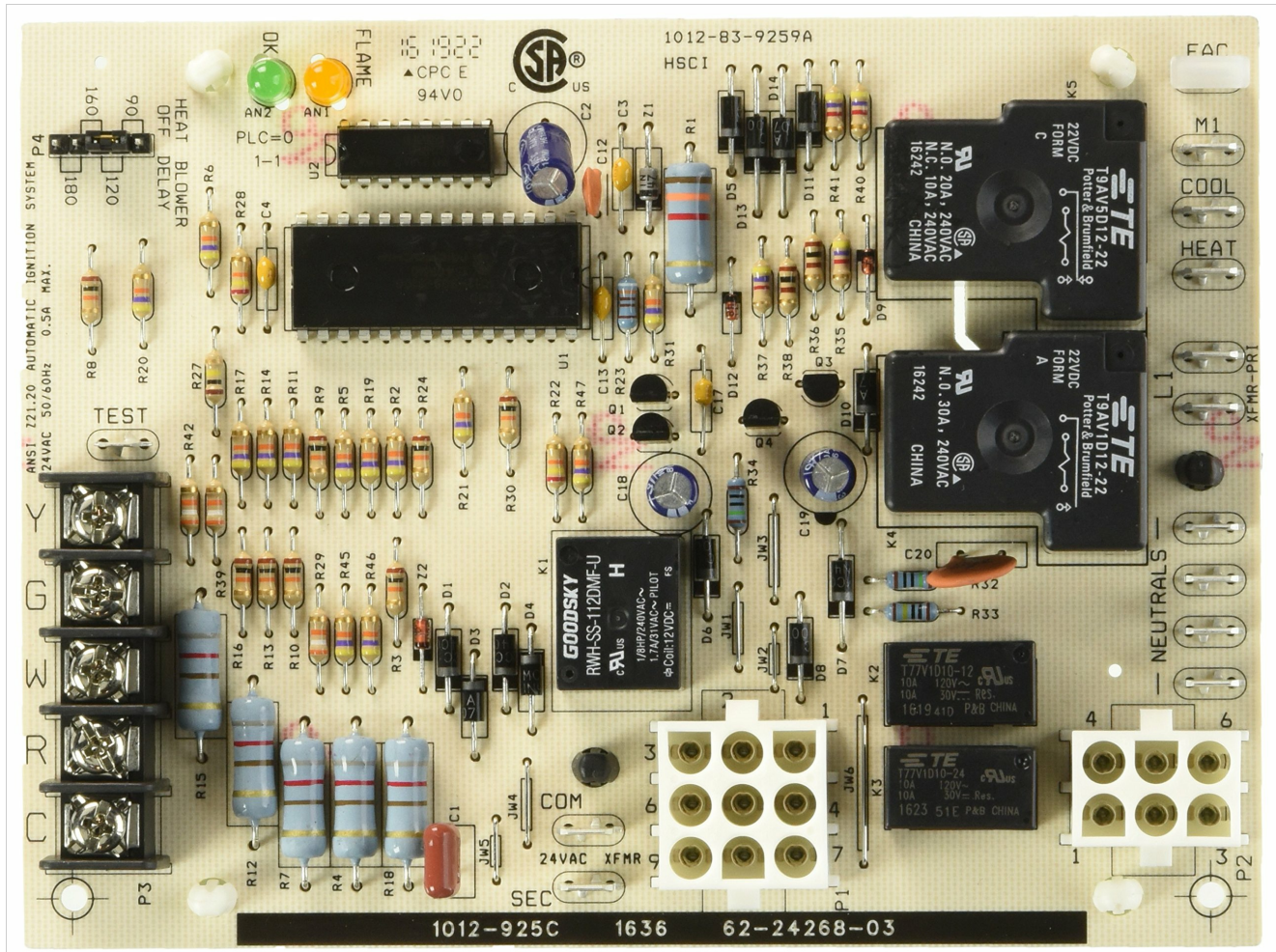


Image: The Protech 62-24268-03 Integrated Furnace Control Board, shown with approximate dimensions of 4.8 inches (12 cm) in width, indicating its compact size for furnace integration.

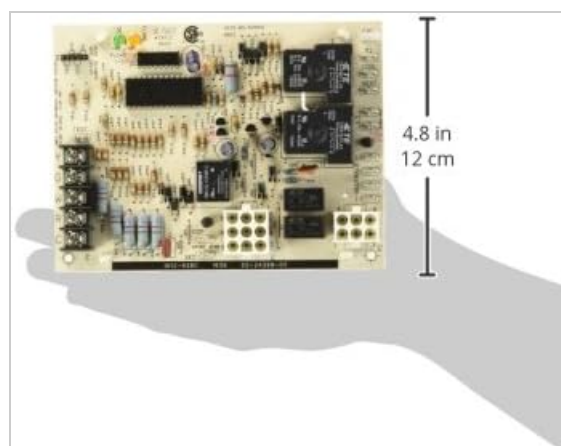


Image: A detailed view of the Protech 62-24268-03 Integrated Furnace Control Board, highlighting its various electronic components, relays, and wiring terminals.

4. INSTALLATION INSTRUCTIONS

NOTE: All controls should be installed by a licensed professional. Failure to read and follow all instructions carefully before installing or operating this control could cause personal injury and/or property damage.

4.1 Compatibility

This control board is compatible with the following Rheem/Ruud models:

- RGLK - All models
- RGLQ - Models with gas code: FJ, FO, GO
- RGPK - All models
- RGPQ - Models with gas code: FJ, FO, GO
- UGLK - All models
- UGLQ - Models with gas code: FJ, FO, GO
- UGPK - All models
- UGPQ - Models with gas code: FJ, FO, GO

The gas code refers to the first two digits of the unit's serial number.

4.2 Pre-Installation Steps

1. **Disconnect Power:** Turn off all electrical power to the furnace at the main service panel.
2. **Turn Off Gas:** Close the manual gas shut-off valve to the furnace.
3. **Access Control Board:** Open the furnace access panel to locate the existing control board.
4. **Document Wiring:** Carefully label all wires connected to the old control board before disconnecting them. Take photos for reference if necessary.

4.3 Board Replacement

1. **Remove Old Board:** Disconnect all labeled wires and mounting screws from the old control board. Carefully remove it.
2. **Install New Board:** Mount the new Protech 62-24268-03 control board in the same location as the old one, securing it with screws.
3. **Connect Wiring:** Reconnect all wires to the new board according to your labels and the provided wiring diagram (90-24314-04). Ensure all connections are firm and correct.
4. **Wire Assembly:** Utilize the AS-50208-31-CY wire assembly as needed for proper connections.

4.4 Post-Installation Steps

1. **Secure Panel:** Close and secure the furnace access panel.
2. **Restore Gas:** Open the manual gas shut-off valve.
3. **Restore Power:** Turn on electrical power to the furnace at the main service panel.
4. **Test Operation:** Initiate a heating cycle from the thermostat to verify proper furnace operation. Observe the ignition sequence and ensure the furnace operates as expected.

5. OPERATION

The Protech 62-24268-03 Integrated Furnace Control Board automatically manages the furnace's heating cycle. Once installed and powered, it will:

- Receive a call for heat from the thermostat.
- Initiate the inducer motor to purge combustion gases.
- Activate the igniter to light the main burners.
- Monitor the flame presence via the flame sensor.
- Engage the main blower motor to distribute heated air.
- Shut down the heating cycle when the thermostat's set point is reached.

The board also incorporates safety features to prevent operation under unsafe conditions, such as flame failure or overheating.

6. MAINTENANCE

The Protech 62-24268-03 Integrated Furnace Control Board is designed for reliable operation and generally requires no specific maintenance. However, regular professional furnace maintenance is crucial for the overall health of your heating system.

- Ensure the furnace area remains clean and free of dust and debris.
- Have your furnace inspected annually by a qualified HVAC technician. This includes checking electrical connections, cleaning components, and verifying proper operation of all safety devices.
- Do not attempt to clean the control board with liquids or abrasive materials.

7. TROUBLESHOOTING

Many furnace control boards include diagnostic LED lights that flash codes to indicate specific issues. Refer to your furnace's specific diagnostic chart (often found on the furnace cover) in conjunction with the control board's instruction sheet (92-26177-555) for detailed troubleshooting.

Common Issues and General Advice:

- **No Heat:** Check thermostat settings, ensure power and gas supply are on. Look for diagnostic codes on the control board.
- **Intermittent Operation:** Could indicate a loose connection, a failing sensor, or an intermittent fault on the board.
- **Blower Not Running:** Check for thermostat fan settings, or issues with the blower motor or its relay on the board.
- **Repeated Ignition Lockout:** Often related to flame sensor issues, gas supply problems, or igniter malfunction.

If you are unable to resolve an issue, contact a qualified HVAC technician for assistance. Do not attempt repairs beyond your skill level, as this can lead to further damage or safety hazards.

8. SPECIFICATIONS

Feature	Detail
Brand	ProTech
Model Name	62-24268-03
Special Feature	Integrated Control Board

Specific Uses	Furnace operation, heating systems
Voltage	120 Volts
Accepted Voltage Frequency	100 to 120 Volts and 60 Hertz
Wattage	2 watts
Product Dimensions	2.25"W x 7.4"H (Board only, approximate)
Item Weight	7.4 ounces
Material	Metal
Specification Met	UL, cUL
Included Components	Integrated Furnace Control Board (IFC)

9. WARRANTY AND SUPPORT

9.1 Warranty Information

Unless otherwise noted, all items carry a one-year limited warranty from the date of purchase. Please retain your proof of purchase for warranty claims.

9.2 Customer Support

For technical assistance, troubleshooting beyond this manual, or warranty inquiries, please contact your authorized ProTech dealer or a qualified HVAC professional.