

Manuals+

[Q & A](#) | [Deep Search](#) | [Upload](#)

manuals.plus /

› [Intellinet](#) /

› [Intellinet 16-Port CAT5e UTP Patch Panel \(Model 513548\) Instruction Manual](#)

Intellinet 513548

Intellinet 16-Port CAT5e UTP Patch Panel

MODEL: 513548 - INSTRUCTION MANUAL

1. Introduction

This manual provides detailed instructions for the installation, operation, and maintenance of your Intellinet 16-Port CAT5e UTP Patch Panel, Model 513548. This device is designed for efficient cable management and organization within network installations, providing a centralized point for connecting network cables.

The Intellinet 16-Port CAT5e UTP Patch Panel is a 19-inch, 1U rack-mountable solution, featuring 16 RJ45 ports on the front and corresponding punch-down blocks on the rear. It supports CAT5e cabling standards, ensuring reliable network performance.

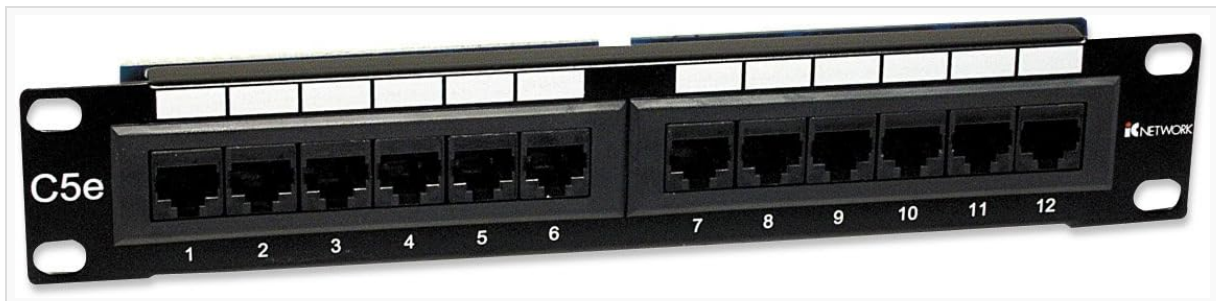


Figure 1: Front view of the Intellinet 16-Port CAT5e UTP Patch Panel, showing the 16 RJ45 ports and the CAT5e designation.

2. Package Contents

- Intellinet 16-Port CAT5e UTP Patch Panel (Model 513548)
- Mounting screws (typically included for rack installation)
- Cable ties (may be included for cable management)

Please inspect the package contents upon receipt to ensure all items are present and undamaged. Contact your vendor immediately if any items are missing or damaged.

3. Setup and Installation

Proper installation is crucial for optimal performance. Follow these steps carefully:

1. **Rack Mounting:** The patch panel is designed for standard 19-inch equipment racks. Secure the panel to the rack using the provided mounting screws. Ensure it is level and firmly attached.

- Cable Preparation:** Prepare your CAT5e UTP cables by stripping approximately 1 inch (2.5 cm) of the outer jacket from each cable end that will be terminated at the patch panel. Untwist the wire pairs only as much as necessary for termination.
- Wire Termination:** The rear of the patch panel features IDC (Insulation Displacement Connector) punch-down blocks. These blocks are color-coded for both T568A and T568B wiring standards. Select the standard consistent with your network infrastructure.

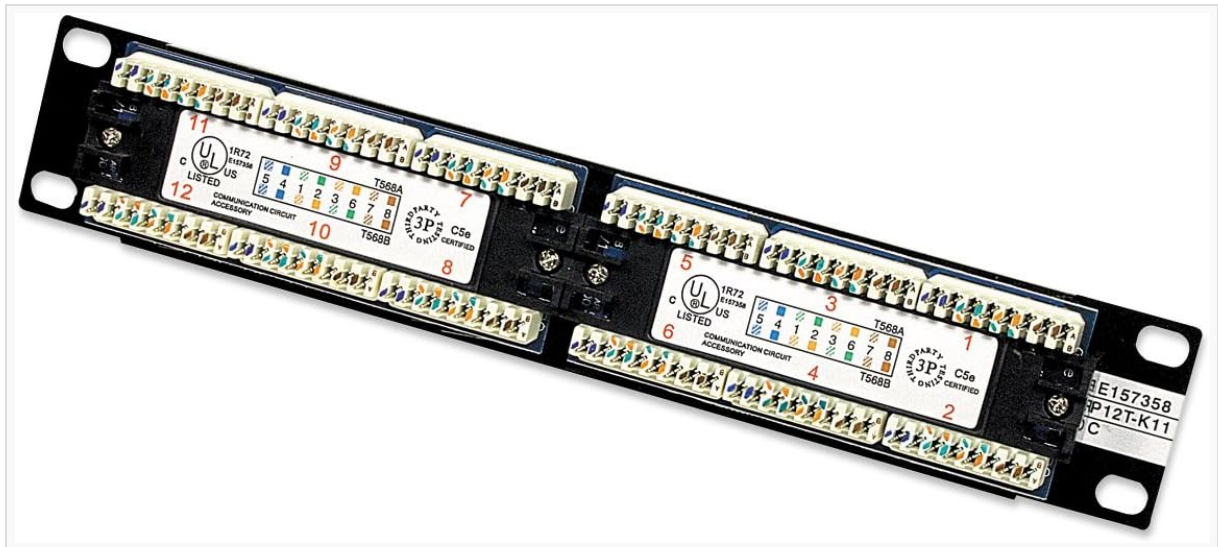


Figure 2: Rear view of the patch panel, illustrating the punch-down blocks and wiring color codes (T568A/B).

4. Punch-Down Process:

- Align each wire with its corresponding color-coded slot on the punch-down block according to your chosen wiring standard (T568A or T568B).
 - Use a 110-type punch-down tool to firmly seat each wire into its slot. The tool will simultaneously cut off any excess wire.
 - Ensure each connection is secure and that no bare copper is exposed beyond the insulation displacement slot.
- Cable Management:** Utilize cable ties or other cable management accessories to neatly route and secure the terminated cables, reducing strain on the connections and maintaining an organized rack.

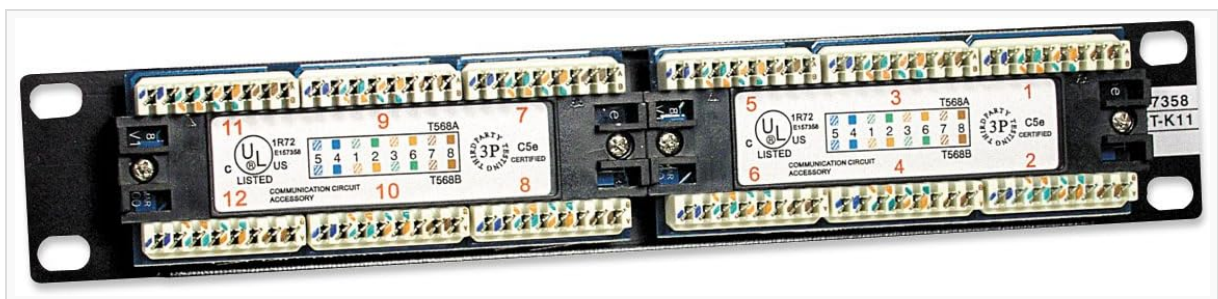


Figure 3: Detailed view of the punch-down blocks, highlighting the T568A and T568B wiring schemes.

4. Operating Instructions

Once the cables are properly terminated and the patch panel is installed, operation is straightforward:

- Connecting Devices:** Use standard RJ45 patch cables to connect your network devices (e.g., computers, switches, routers) to the front-facing RJ45 ports of the patch panel.
- Port Identification:** Each port on the front of the panel is numbered. Maintain a clear record of which

rear-terminated cable corresponds to which front port and which network device is connected to it. This aids in troubleshooting and network management.

- **Flexibility:** The patch panel allows for easy reconfiguration of network connections without needing to re-terminate permanent cabling. Simply move patch cables between ports as needed.

5. Maintenance

The Intellinet 16-Port CAT5e UTP Patch Panel requires minimal maintenance to ensure long-term reliability:

- **Cleaning:** Periodically clean the front RJ45 ports and the panel surface with a soft, dry, lint-free cloth. Avoid using liquid cleaners directly on the ports.
- **Connection Integrity:** Occasionally inspect the punch-down connections on the rear of the panel to ensure they remain secure. Loose connections can lead to intermittent network issues.
- **Cable Management:** Regularly check and adjust cable management to prevent excessive bending or strain on cables, which can degrade performance or damage connections.

6. Troubleshooting

If you encounter issues with your network connections through the patch panel, consider the following troubleshooting steps:

- **No Connectivity:**
 - Verify that the patch cable connecting the device to the panel is functional. Test with a known good cable.
 - Check the rear punch-down connection for the affected port. Ensure all wires are properly seated and that the correct T568A/B standard was used consistently.
 - Use a cable tester to check the continuity and wiring scheme of the terminated cable from end to end.
- **Intermittent Connection:**
 - Inspect for loose punch-down connections or damaged wires at the rear of the panel.
 - Ensure patch cables are securely seated in the front RJ45 ports.
 - Check for excessive cable bends or kinks that could be causing signal degradation.
- **Slow Network Speed:**
 - Confirm that all components in the network path (cables, switches, network cards) are rated for the desired speed (e.g., Gigabit Ethernet).
 - Verify that the CAT5e cable runs are within the maximum recommended length (100 meters for CAT5e).
 - Ensure proper termination and minimal untwisting of wire pairs to reduce crosstalk.

7. Specifications

Feature	Specification
Model	513548
Ports	16 x RJ45

Feature	Specification
Cable Type Support	CAT5e UTP
Mounting	19-inch Rackmount, 1U height
Wiring Standards	T568A and T568B
Termination	IDC (Insulation Displacement Connector) 110-type punch-down
Color	Black

8. Warranty and Support

For warranty information and technical support, please refer to the official Intellinet website or contact your local Intellinet reseller. Keep your purchase receipt for warranty claims.

Online Resources: www.intellinet-network.com