

Electro-Harmonix FREEZE

Electro-Harmonix Freeze Sound Retainer Pedal User Manual

Model: FREEZE

INTRODUCTION

The Electro-Harmonix Freeze Sound Retainer Pedal is designed to capture and sustain any note or chord, creating a continuous sonic foundation. This pedal offers three distinct decay modes, allowing for versatile sound manipulation. It is an effective tool for musicians seeking to expand their tonal palette with sustained effects.

SETUP

Follow these steps to set up your Freeze Sound Retainer Pedal:

- Power Connection:** Connect the included 9.6VDC 200mA power supply to the 9V power jack on the rear of the pedal. Ensure the power supply is compatible and correctly oriented.
- Audio Input:** Connect your instrument (e.g., guitar) to the **INPUT** jack on the right side of the pedal using a standard 1/4-inch instrument cable.
- Audio Output:** Connect the **AMP** jack on the left side of the pedal to your amplifier or the next pedal in your signal chain using a standard 1/4-inch instrument cable.
- Signal Chain Placement:** The Freeze pedal typically performs best when placed later in your effects chain, after modulation, delay, and reverb pedals, but before your amplifier. Experiment with placement to achieve desired results.



Image 1: Front view of the Electro-Harmonix Freeze pedal, showing the footswitch, Effect Level knob, and mode switch.

OPERATING INSTRUCTIONS

The Freeze pedal features a momentary footswitch and a three-position mode switch to control the sustain effect.

Controls:

- **Footswitch:** This is a momentary footswitch. Press and hold to capture and sustain the current sound. Release to end the sustain.
- **Effect Level Knob:** Controls the volume of the sustained sound. Turn clockwise to increase the level, counter-clockwise to decrease.
- **Mode Switch (FAST/SLOW/LATCH):** Selects the decay characteristic of the sustained sound.
 - **FAST:** Provides a quick decay of the sustained sound after the footswitch is released.
 - **SLOW:** Offers a gradual, slower decay of the sustained sound after the footswitch is released.
 - **LATCH:** Engages infinite sustain. Press and release the footswitch once to latch the current sound. Press and release again to disengage the latch and stop the sustain.

Basic Operation:

1. Ensure the pedal is powered and connected correctly.
2. Play a note or chord on your instrument.
3. While the note/chord is sounding, press and hold the footswitch to capture the sound. The red LED will illuminate, indicating the sound is being sustained.
4. Release the footswitch to end the sustain (in FAST or SLOW mode). In LATCH mode, press and release again to end.
5. Adjust the Effect Level knob to blend the sustained sound with your live playing.
6. Experiment with the FAST, SLOW, and LATCH modes to find the desired decay characteristic for your sustained sounds.

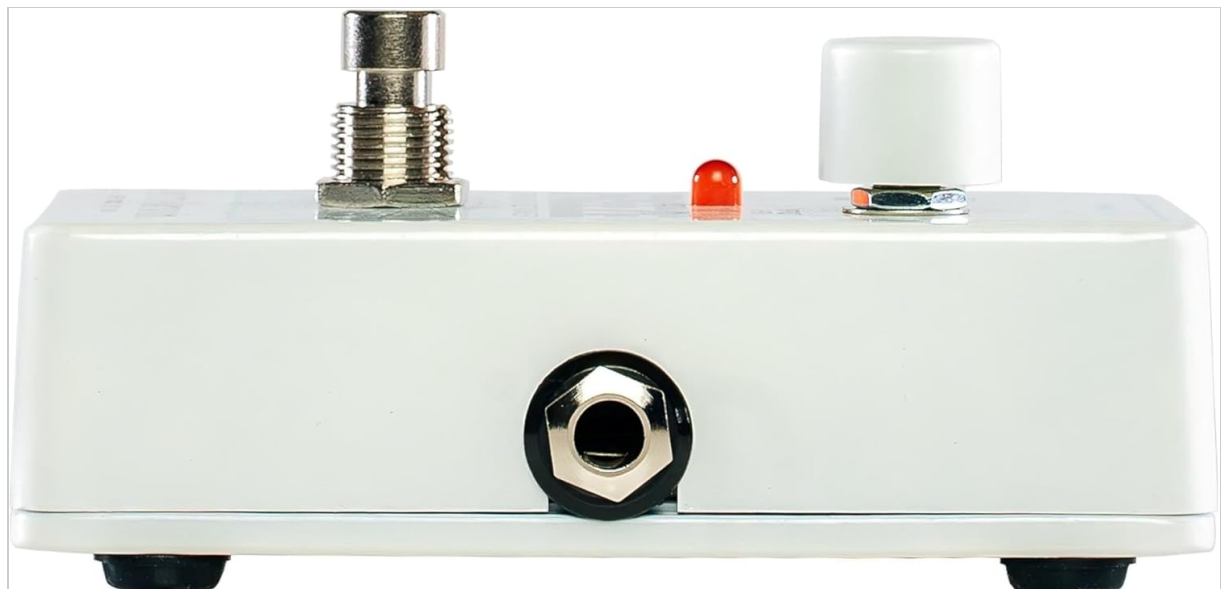


Image 2: Side view of the Freeze pedal, highlighting the INPUT jack.

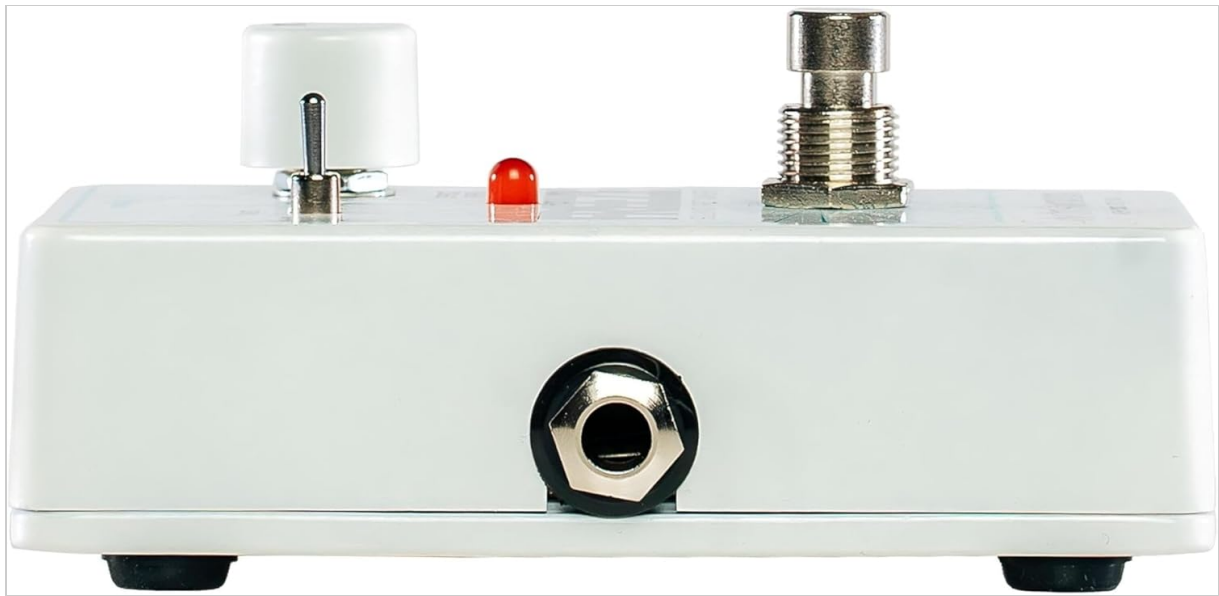


Image 3: Side view of the Freeze pedal, highlighting the AMP (output) jack.

MAINTENANCE

- **Cleaning:** Use a soft, dry cloth to clean the pedal's exterior. Avoid abrasive cleaners or solvents.
- **Storage:** Store the pedal in a cool, dry place away from direct sunlight and extreme temperatures when not in use.
- **Power Supply:** Always use the specified 9.6VDC 200mA power supply. Using an incorrect power supply can damage the unit and void the warranty.
- **Connections:** Periodically check all cable connections for wear and tear. Replace damaged cables to ensure optimal performance.



Image 4: Rear view of the Freeze pedal, showing the 9VDC power input jack.

TROUBLESHOOTING

Problem	Possible Cause	Solution
No sound when pedal is engaged.	Incorrect power supply; cables not connected properly; Effect Level knob set to minimum.	Verify power supply (9.6VDC 200mA); check all audio cables; increase Effect Level knob.
Sustained sound is too quiet or too loud.	Effect Level knob adjustment needed.	Adjust the Effect Level knob to achieve the desired volume balance.
Sustain does not stop immediately after releasing footswitch.	Pedal is in SLOW or LATCH mode.	Switch to FAST mode for immediate decay. In LATCH mode, press and release the footswitch again to disengage.
Pedal does not power on.	Power supply not connected; faulty power supply or outlet.	Ensure power supply is securely connected to pedal and a working power outlet. Test with another power supply if available.

SPECIFICATIONS

- **Model:** FREEZE
- **Brand:** Electro-Harmonix

- **Power Supply:** 9.6VDC 200mA (included)
- **Input:** 1/4 inch (6.35mm) audio jack
- **Output:** 1/4 inch (6.35mm) audio jack
- **Signal Format:** Analog
- **Body Material:** Metal
- **Item Weight:** 1.19 pounds (0.54 Kilograms)
- **Product Dimensions:** 5.65 x 1.4 x 3.2 inches (14.35 x 3.56 x 8.13 cm)
- **Date First Available:** July 1, 2010

WARRANTY INFORMATION

For detailed warranty information regarding your Electro-Harmonix Freeze Sound Retainer Pedal, please refer to the official Electro-Harmonix website or the warranty card included with your product. Warranty terms and conditions may vary by region and purchase date.

CUSTOMER SUPPORT

If you require further assistance or have questions not covered in this manual, please contact Electro-Harmonix customer support. You can find contact information and additional resources on the official Electro-Harmonix website:

www.ehx.com