

Blue Wave NB3044

Blue Wave Belize Above Ground Swimming Pool User Manual

Model: NB3044

INTRODUCTION

The Blue Wave Belize 52-inch Deep Metal Wall Above-Ground Pool is designed for durability, stability, and long-lasting enjoyment. This comprehensive package includes the pool structure, a durable liner, an efficient sand filter system, a heavy-duty A-frame safety ladder, and a complete maintenance kit. This manual provides essential information for the proper setup, operation, and maintenance of your new pool.



Complete Blue Wave Belize Oval Pool Package with all included components.



Key features of the Belize Oval Pool Package, including material benefits and water capacity.

SETUP AND INSTALLATION

Proper installation is crucial for the longevity and safety of your Blue Wave Belize pool. While designed for DIY installation, careful attention to detail and adherence to the provided instructions are essential. It is recommended to have multiple people assist with the assembly due to the size and weight of components.

Site Preparation

Ensure the chosen site for your pool is completely level and free of debris, rocks, or sharp objects. Proper ground preparation prevents damage to the liner and ensures the structural integrity of the pool.

Pool Structure Assembly

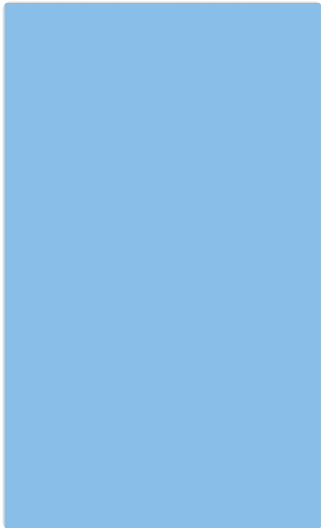
The pool features a 6-inch galvanized steel wall and uprights, providing superior strength and stability. A protective zinc-aluminum coating resists rust and corrosion. Follow the step-by-step instructions for assembling the steel wall, top rails, and uprights. The resin top caps offer additional protection against discoloration and cracking from sun exposure.



Detailed view of the pool's construction, highlighting galvanized steel and dimensions.

Liner Installation

The pool includes a standard-gauge overlap liner. Carefully install the liner according to the instructions, ensuring it is smooth and free of wrinkles before filling the pool with water. Do not cut the skimmer hole until the pool is partially filled to ensure proper alignment.



The durable blue overlap liner.

Sand Filter System Setup

The Blue Wave Sandman system provides high-performance filtration. Assemble the sand filter and 1.5-HP dual-speed pump, connecting them to the pool according to the plumbing diagrams. Ensure all connections are secure to prevent leaks.



Overview of the Sandman Sand Filter System and its capabilities.



Close-up of the Sandman filter and pump unit.

Ladder Assembly

The heavy-duty resin A-frame ladder enhances safety with its lockable flip-up design and two-piece barrier. Assemble the ladder carefully, ensuring all parts are securely fastened. The ladder supports up to 250 lbs.

Safety Meets Comfort
Designed for Secure, Hassle-Free Enjoyment

- Durable Resin Materials**
Includes a built-in platform for secure entry and exit
- Two Piece Barrier**
Provides added safety, especially for children
- Lockable Flip-Up Steps**
Prevents unauthorized access

250 POUNDS
Weight Capacity

81 in
10 in
48 in
24 in

A diagram of a white resin A-frame ladder. The ladder is shown in its open position. Dimensions are indicated with blue lines and text: the total height is 81 in, the width of the base is 48 in, the height of the platform at the top is 10 in, and the height of the steps is 24 in. The ladder has a built-in platform at the top and a two-piece barrier on each side. The steps are lockable and flip-up.

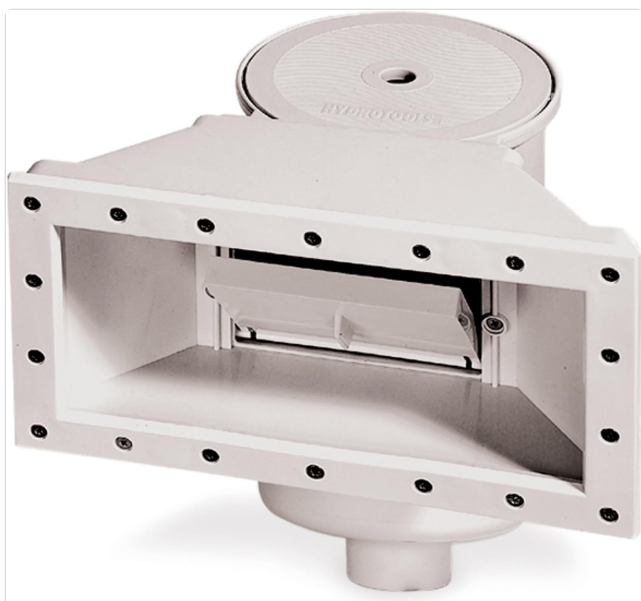
Safety features of the A-frame ladder.



Detailed view of the A-frame safety ladder.

Skimmer Installation

Install the wide-mouth skimmer according to the instructions. The skimmer is crucial for removing leaves, bugs, and other debris from the water surface before they sink to the pool floor.



The wide-mouth skimmer for efficient debris removal.

OPERATING THE POOL

Once your pool is installed and filled, proper operation of the filtration system and water chemistry management are key to maintaining clean and clear water.

Filtration System

The 1.5-HP dual-speed pump and sand filter system are designed for efficient water circulation. Operate the pump daily to ensure adequate filtration. The system circulates 4,500 gallons per hour, with a 24,000-gallon per hour turnover rate, effectively keeping the water pristine.

Water Chemistry

Regularly test your pool water using the included test strips to monitor pH, chlorine, and alkalinity levels. Adjust chemicals as needed to maintain balanced water, which is essential for swimmer comfort and equipment longevity. Refer to a pool chemical guide for specific dosage recommendations.

MAINTENANCE

Consistent maintenance will extend the life of your pool and ensure a safe swimming environment.

Daily/Weekly Cleaning

- **Skimming:** Use the leaf skimmer to remove floating debris from the water surface.
- **Brushing:** Use the nylon wall brush to clean the pool walls and floor, dislodging algae and dirt.
- **Vacuumping:** Connect the vinyl liner vacuum head to the 42-ft vacuum hose and your filter system to vacuum the pool floor.



The comprehensive maintenance kit for pool upkeep.

Filter Maintenance

Periodically backwash your sand filter to clean the sand and maintain optimal filtration performance. Refer to your filter system's specific instructions for backwashing procedures and frequency.

Winterization

Before freezing temperatures arrive, properly winterize your pool to protect it from damage. This typically involves lowering the water level, draining equipment, and covering the pool. Consult a detailed pool winterization guide for your specific climate.

Safety Guidelines

- **No Diving:** This is an above-ground pool. **DO NOT DIVE** into the pool. Serious injury or death may result.
- **Adult Supervision:** Always ensure children are supervised by an adult when in or around the pool.
- **Ladder Safety:** Utilize the lockable flip-up steps on the A-frame ladder to prevent unauthorized access, especially by young children.
- **Chemical Handling:** Handle pool chemicals with care, following all manufacturer instructions and safety warnings. Store chemicals in a cool, dry, secure place away from children and pets.

Troubleshooting

This section addresses common issues you might encounter. For detailed troubleshooting steps, refer to the full product manual.

- **Cloudy Water:** Check filter operation, water chemistry (chlorine, pH, alkalinity), and consider shocking the pool.
- **Pump Not Circulating:** Verify power supply, check for clogs in skimmer or pump basket, ensure proper water level.
- **Leaks:** Inspect all connections, the skimmer, and the liner for visible damage. Patch small liner tears immediately.

Specifications

Feature	Detail
Brand	Blue Wave
Model Number	NB3044
Dimensions (L x W x H)	30 ft x 15 ft x 52 in
Shape	Oval
Capacity	Approx. 9,900 gallons
Material	Alloy Steel (Galvanized with Zinc-Aluminum Coating)
Included Components	Pool Liner, Sand Filter System (1.5-HP dual-speed pump), A-Frame Ladder, Skimmer, Maintenance Kit
Item Weight	679 pounds
Assembly Required	Yes
Usage	Outdoor

Warranty and Support

Warranty Information

The Blue Wave Belize Above Ground Swimming Pool is backed by a **15-year limited warranty**. This warranty covers manufacturing defects and ensures the long-term reliability of your pool. Please retain your proof of purchase for warranty claims.



15-Year Limited Warranty
Shield.

Customer Support

For any questions regarding installation, operation, maintenance, or warranty claims, please refer to the full user manual provided with your product or visit the official Blue Wave website for support resources.

