

Manuals+

[Q & A](#) | [Deep Search](#) | [Upload](#)

manuals.plus /

- › [SEM](#) /
- › [SEM 15813 Medium Dark Pewter Color Coat Instruction Manual](#)

SEM 15813

SEM Color Coat Instruction Manual

Model: 15813 - Medium Dark Pewter

PRODUCT OVERVIEW

The SEM Color Coat is a specialized elastomeric coating designed to restore or change the color of various surfaces, including most vinyl, flexible and rigid plastics, carpet, and velour. This product is formulated as a fade-resistant, flexible, and permanent coating, not a dye.



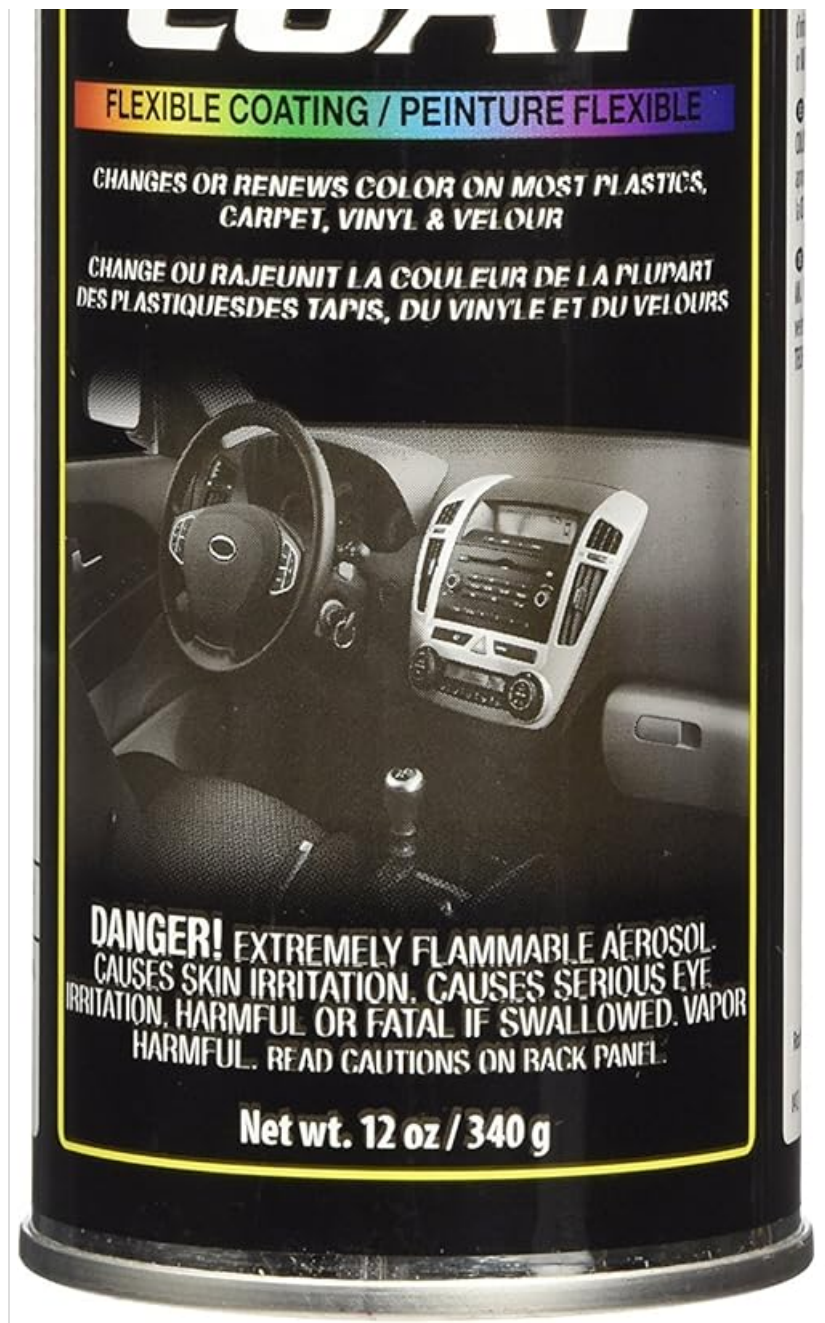


Image: Front view of the SEM Color Coat aerosol can, showing the product name, "Flexible Coating," and a graphic of a car interior.

SAFETY INFORMATION

DANGER! EXTREMELY FLAMMABLE AEROSOL.

Causes skin irritation. Causes serious eye irritation. Harmful or fatal if swallowed. Vapor harmful. Read cautions on back panel.

- Keep away from heat/sparks/open flames/hot surfaces. No smoking.
- Pressurized container: Do not pierce or burn, even after use.
- Do not spray on an open flame or other ignition source.
- Protect from sunlight. Do not expose to temperatures exceeding 50°C/122°F.
- Dispose of contents/container in accordance with local/regional/national/international regulations.
- Avoid breathing dust/fume/gas/mist/vapors/spray.
- Wash thoroughly after handling.
- Wear protective gloves/eye protection/face protection.



Image: Back view of the SEM Color Coat aerosol can, displaying safety warnings and product information.

SETUP AND PREPARATION

Proper preparation is crucial for optimal adhesion and longevity of the coating. Follow these steps carefully:

1. **Remove Parts:** Disassemble and remove the parts you intend to paint from the vehicle or item.
2. **Thorough Cleaning:** Thoroughly clean the surfaces with soap and a degreaser to remove all dirt, grease, and contaminants.
3. **Light Sanding (Optional but Recommended):** For improved adhesion, lightly sand the surface with 800-grit sandpaper.
4. **Final Cleaning:** Clean the surface thoroughly again with acetone. This step is very important for proper adhesion. Wear rubber gloves and safety goggles during this step as acetone can burn through gloves and is irritating to eyes.
5. **Temperature:** Ensure the application temperature is approximately 21°C (70°F).





Image: Side view of the SEM Color Coat aerosol can, showing general application instructions and product details.

OPERATING INSTRUCTIONS (APPLICATION)

Apply the SEM Color Coat in multiple thin layers, allowing adequate drying time between coats. Do not use a heat gun.

1. **First Coat (Light Dusting):** Apply a very light dusting coat. Alternatively, apply an adhesion promoter if desired, which can help the paint adhere better to surfaces.

2. **Second Coat (Light Dusting):** Apply another light dusting coat.
3. **Subsequent Coats (Coverage):** Apply a third coat with more coverage, followed by a fourth and fifth coat for complete and even coverage.
4. **Drying Time:** Allow 10-15 minutes in between coats. The exact drying time may vary depending on the ambient temperature.

The product is designed to be fast-drying, with a dry time of approximately 1 hour.





Image: Top view of the SEM Color Coat aerosol can, displaying the model number "15813" and color "Medium Dark Pewter" on the cap.

MAINTENANCE

Once applied and fully cured, SEM Color Coat provides a durable and flexible finish. To maintain the appearance and longevity of the coating:

- Clean coated surfaces with mild automotive interior cleaners.
- Avoid harsh abrasives or strong chemical solvents that could damage the finish.
- While the product is designed to be permanent and fade-resistant, prolonged exposure to extreme conditions may affect its lifespan.

TROUBLESHOOTING

Problem	Possible Cause	Solution
Poor Adhesion / Chipping	Inadequate surface preparation (e.g., not cleaned thoroughly, no sanding).	Ensure surfaces are meticulously cleaned with degreaser and acetone. Consider light sanding. Apply an adhesion promoter.
Uneven Color / Streaks	Too thick coats, insufficient shaking of can, or inconsistent spray pattern.	Apply multiple thin, even coats. Shake can well before and during use. Maintain consistent distance from surface.
Color Mismatch	Incorrect color selection for the original surface.	Verify the correct color code for your application. Test on an inconspicuous area first. Note that "Medium Dark Pewter" may vary slightly depending on the original surface's specific shade.

SPECIFICATIONS

Brand: SEM

Model Name: 15813

Color: Medium Dark Pewter (Color Code: #665D56)

Finish Type: Metallic

Item Volume: 12 Fluid Ounces (12 oz / 340 g)

Item Form: Aerosol

Paint Type: Specialty Elastomeric Coating

Specific Uses: Vinyl surfaces, flexible and rigid plastics, carpet, velour

Surface Recommendation: Carpet (also suitable for vinyl, plastic, velour)

Indoor/Outdoor Usage: Indoor, Outdoor

Special Feature: Fast-Drying

Dry Time: Approximately 1 hour

Water Resistance Level: Not Water Resistant

Item Weight: 1 pound

Product Dimensions: 8.38 x 5.63 x 7.88 inches

UPC: 646786158131

ADDITIONAL RESOURCES

For more detailed technical data and information, refer to the official SEM Color Coat Technical Data Sheet or RAP-1.

A relevant link for additional information can be found here: [SEM Color Coat Technical Data](#)

WARRANTY AND SUPPORT

Information regarding product warranty and direct support contacts is not available in this manual. Please refer to the product packaging or the manufacturer's official website for warranty details and customer support options.