

Dorman 85462

Dorman 85462 18-14 Gauge Quick Waterproof Splice Instruction Manual

Model: 85462

1. INTRODUCTION

The Dorman 85462 Quick Waterproof Splice is designed for reliable electrical connections in automotive and other applications. These splices are suitable for 18-14 gauge wires and feature a waterproof design for enhanced durability in various environments. They are constructed from high-quality materials to ensure long-lasting performance.

2. PRODUCT OVERVIEW

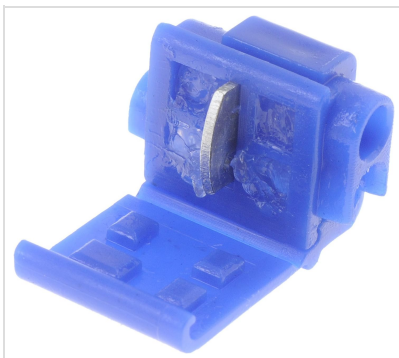


Figure 1: Angled view of the Dorman 85462 Quick Waterproof Splice, showing the blue casing and internal metal blade.



Figure 2: Top view of the Dorman 85462 Quick Waterproof Splice, illustrating the wire entry points and the crimping mechanism.

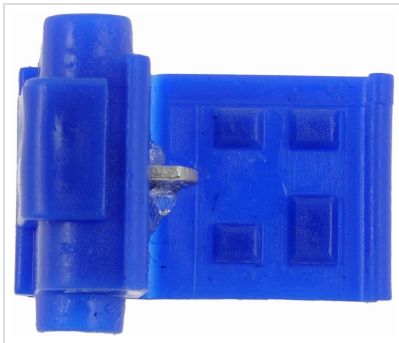


Figure 3: Side view of the Dorman 85462 Quick Waterproof Splice, highlighting the compact design.

3. SETUP AND INSTALLATION

Follow these steps to properly install the Dorman 85462 Quick Waterproof Splice:

1. **Prepare Wires:** Ensure the wires you intend to splice are clean and free from damage. Do not strip the wire insulation. The splice is designed for insulation displacement connection.
2. **Insert Wires:** Open the splice connector. Insert the first wire into one channel and the second wire into the other channel. Ensure each wire is fully seated against the end of its channel.
3. **Crimp Connector:** Using a pair of pliers, firmly press down the metal blade until it cuts through the insulation and makes contact with the wire conductors. The blade should be fully seated and flush with the plastic housing.
4. **Close Cover:** Close the plastic cover over the crimped blade until it snaps securely into place. This action helps to seal the connection and provide waterproofing.
5. **Verify Connection:** Gently tug on the wires to ensure they are securely held by the splice. Test the electrical circuit to confirm a proper connection has been established.

Note: These splices are designed for 18-14 gauge wires. Using wires outside this range may result in an unreliable connection or damage to the splice.

4. OPERATING INSTRUCTIONS

Once installed, the Dorman 85462 Quick Waterproof Splice functions as a permanent electrical connection. No further operational steps are required. The waterproof design protects the connection from moisture and environmental elements.

5. MAINTENANCE

The Dorman 85462 Quick Waterproof Splice is designed to be maintenance-free after proper installation. Periodically inspect the splice and surrounding wiring for any signs of physical damage, corrosion, or loose connections, especially in harsh environments. If damage is observed, replace the splice.

6. TROUBLESHOOTING

If you encounter issues after installing the quick splice, consider the following troubleshooting steps:

- **No Electrical Connection:**
 - Ensure the wires are fully inserted into the splice channels before crimping.
 - Verify that the metal blade was fully pressed down and penetrated the wire insulation to make proper contact with the conductor. Sometimes, insufficient pressure can lead to a poor connection.
 - Check if the wire gauge matches the splice's specifications (18-14 gauge). Wires that are too thin may not be properly pierced, and wires that are too thick may prevent the blade from seating correctly or damage the splice.
 - Inspect the metal blade for any bending or damage that might prevent it from making a solid connection. If the blade is bent, the splice should be replaced.
- **Intermittent Connection:**
 - This often indicates a partial connection. Re-examine the crimp to ensure the blade is fully seated and the wires are firmly held.
 - Check for any movement of the wires within the splice. If wires are loose, the splice may need to be replaced and re-installed with proper crimping technique.
- **Water Leakage/Corrosion:**
 - Ensure the outer plastic cover is fully closed and latched, providing a seal.
 - Verify that the splice itself is not damaged or cracked, which could compromise its waterproof integrity.

7. SPECIFICATIONS

Feature	Detail
Brand	Dorman
Model Number	85462
Wire Gauge Compatibility	18-14 Gauge
Type	Quick Waterproof Splice
Color	Blue

Feature	Detail
Item Weight	0.48 ounces (per 4-pack)
Product Dimensions	4 x 2.65 x 1 inches (packaging)
Manufacturer Part Number	85462

8. WARRANTY AND SUPPORT

Dorman products are designed for quality and reliability. For technical assistance or support, please contact Dorman's ASE Blue Seal Certified technical support team. Refer to the official Dorman website or product packaging for specific warranty details and contact information.

For more information, visit the official [Dorman Store on Amazon](#).

© 2024 Dorman Products. All rights reserved.

This manual is for informational purposes only. Dorman is not responsible for any damage or injury resulting from improper installation or use of this product.