



[Manuals.plus](#) /

› [SEGA](#) /

› [SEGA Vanquish Xbox 360 Instruction Manual \(Model 68045\)](#)

SEGA 68045

Vanquish - Xbox 360 Instruction Manual

Model: 68045

[Introduction](#)

[Setup](#)

[Operating Instructions](#)

[Maintenance](#)

[Troubleshooting](#)

[Specifications](#)

[Warranty & Support](#)

1. INTRODUCTION

Vanquish is a science fiction third-person shooter developed by PlatinumGames and published by SEGA for the Xbox 360 platform. Set in the near future, the game plunges players into a conflict between the United States and Russia over the world's dwindling energy resources. The narrative centers on a space station designed to harness solar energy, which is seized by Russian forces and used to devastate San Francisco. As a government agent named Sam, equipped with an advanced Augmented Reaction Suit (ARS), your mission is to reclaim the space station and prevent further destruction.

The game is renowned for its fast-paced action, innovative combat mechanics, and the unique abilities provided by the ARS battle suit, including superhuman speed and agility. Players will engage in intense battles against various robot enemies across expansive environments.

XBOX 360

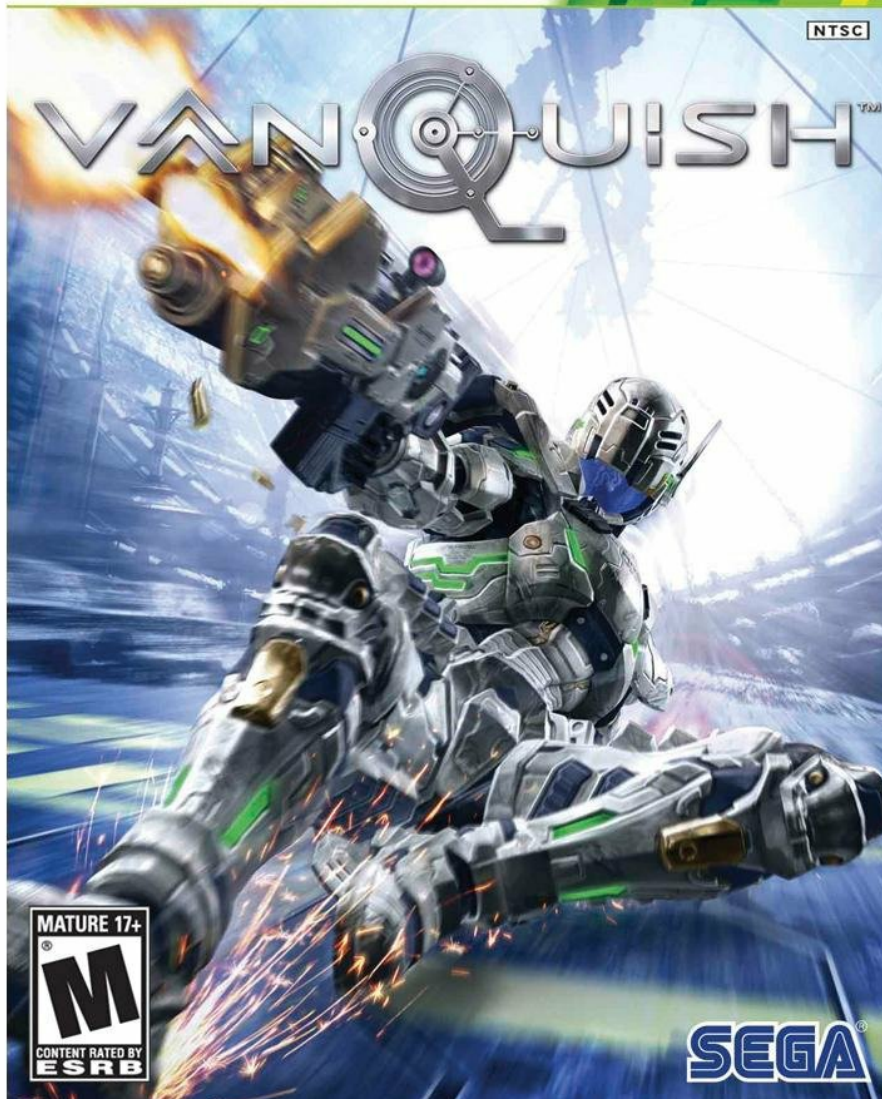


Figure 1: Vanquish Xbox 360 game box art.

2. SETUP

2.1 System Requirements

- **Console:** Xbox 360 (compatible with Microsoft Xbox 360, Microsoft Xbox 360 E)
- **Storage:** Sufficient free space on your Xbox 360 hard drive for game saves and potential updates.
- **Controller:** Standard Xbox 360 controller.
- **Display:** Television or monitor compatible with Xbox 360 output.

2.2 Initial Installation

1. Insert the Vanquish game disc into your Xbox 360 console's disc drive.
2. The console should automatically detect the game and begin the installation process. Follow any on-screen prompts.
3. If prompted, accept any necessary game updates to ensure optimal performance and access to the latest features.
4. Once installation is complete, the game will be ready to launch from the Xbox 360 dashboard.

3. OPERATING INSTRUCTIONS

3.1 Basic Gameplay

Vanquish is a third-person shooter focused on high-speed combat and tactical movement. Players control Sam Gideon, utilizing his ARS suit's unique abilities to navigate environments and engage enemies.

3.2 Key Features

- **Augmented Reaction Suit (ARS):** The core of Sam's abilities. The ARS allows for rapid movement, bullet-time slowdowns (AR Mode), and powerful melee attacks. Managing the ARS energy gauge is crucial for survival.
- **Weapon System:** Sam can carry multiple weapons, which can be upgraded throughout the game. Weapons include assault rifles, shotguns, rocket launchers, and more.
- **Cover System:** Utilize environmental cover to avoid enemy fire, but remember the game encourages aggressive, fast-paced engagement rather than static cover.
- **Melee Attacks:** Powerful close-quarters attacks that consume ARS energy but can quickly dispatch enemies.

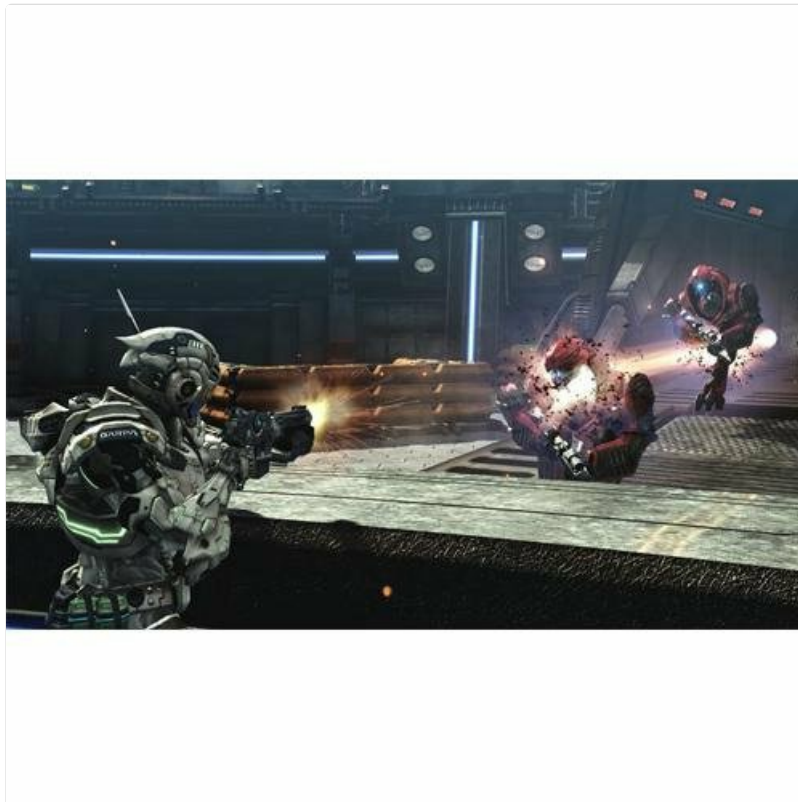


Figure 2: Sam Gideon engaging robot enemies in a futuristic environment.

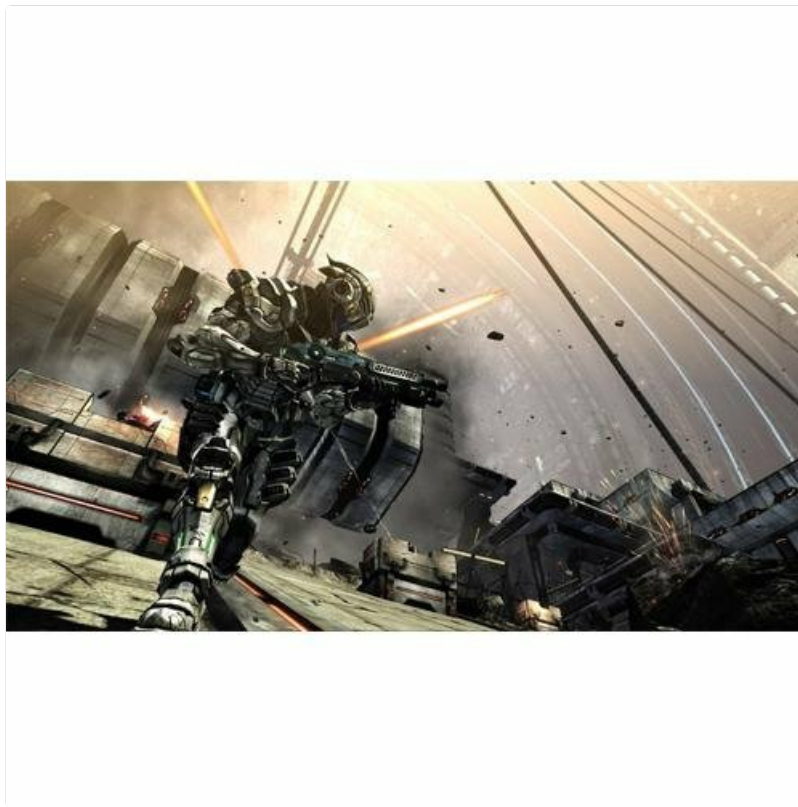


Figure 3: Dynamic combat with Sam utilizing the ARS suit's mobility.

3.3 Controls (Standard Xbox 360 Controller)

While specific button mappings are detailed in the in-game manual, general controls include:

- **Left Stick:** Movement
- **Right Stick:** Camera control
- **A Button:** Jump/Boost Slide
- **X Button:** Reload/Interact
- **Y Button:** Melee Attack
- **B Button:** Take Cover
- **Right Trigger:** Fire Weapon
- **Left Trigger:** Aim
- **Left Bumper:** Activate AR Mode (slow motion)
- **Right Bumper:** Switch Weapons
- **D-Pad:** Select Grenades/Other functions
- **Start Button:** Pause Menu
- **Back Button:** Objective/Map

Your browser does not support the video tag.

Video 1: Official Vanquish GC Trailer, showcasing gameplay and story elements.

4. MAINTENANCE

4.1 Game Disc Care

- Always handle the game disc by its edges to avoid touching the data surface.
- Store the disc in its original case when not in use to protect it from dust and scratches.

- To clean the disc, gently wipe it with a soft, lint-free cloth from the center outwards. Do not use abrasive cleaners or solvents.

4.2 Console Care

- Ensure your Xbox 360 console is placed in a well-ventilated area to prevent overheating.
- Keep the console and its vents free from dust accumulation.
- Regularly check for and install system updates for your Xbox 360 to maintain optimal performance and compatibility.

5. TROUBLESHOOTING

5.1 Common Issues and Solutions

- **Game Freezes or Crashes:**
 - Ensure the game disc is clean and free of scratches.
 - Clear your Xbox 360 system cache (refer to your Xbox 360 console manual for instructions).
 - Ensure your console has the latest system software updates.
- **Disc Read Errors:**
 - Clean the game disc as described in Section 4.1.
 - Try another game disc to determine if the issue is with the console's disc drive or the Vanquish disc.
- **Graphics or Audio Glitches:**
 - Restart the game and/or the console.
 - Check your display and audio connections.
- **Controller Not Responding:**
 - Ensure your controller batteries are charged or replaced.
 - Resync your wireless controller with the console.

If issues persist after attempting these solutions, please refer to the official SEGA support channels or your Xbox 360 console's support documentation.

6. SPECIFICATIONS

Feature	Detail
Product Name	Vanquish
Platform	Xbox 360
Brand	SEGA
Model Number	68045
UPC	010086680454
Release Date	October 19, 2010

Feature	Detail
ESRB Rating	Mature (17+) - Blood and Gore, Intense Violence, Strong Language
Product Dimensions	7.52 x 5.39 x 0.55 inches
Item Weight	0.32 ounces

7. WARRANTY & SUPPORT

7.1 Product Warranty

This product is covered by the standard warranty provided by SEGA. Please refer to the warranty information included with your game packaging or visit the official SEGA website for detailed terms and conditions regarding defects, returns, and replacements.

7.2 Customer Support

For technical assistance, gameplay questions, or other support inquiries, please contact SEGA customer support through their official website:

[Visit SEGA Support Website](#)

You may also find helpful resources and community forums on the Xbox Live platform or dedicated gaming websites.