

Manuals.plus /

› Italeri /

› Italeri 1292S B2 Ju 87 Stuka 1:72 Scale Model Kit Instruction Manual

## Italeri 1292S

# Italeri 1292S B2 Ju 87 Stuka 1:72 Scale Model Kit Instruction Manual

Model Number: 510001292

## 1. INTRODUCTION

This instruction manual provides guidance for the assembly of the Italeri 1292S B2 Ju 87 Stuka 1:72 scale model kit. This kit is designed for adult modelers (recommended age 14 years and up) and requires assembly, painting, and decal application. Please read through all instructions before beginning the assembly process.

**Note:** Tools, adhesives, and paints are not included with this model kit and must be purchased separately.



**Figure 1.1:** The product box for the Italeri Ju-87 B2/R2 Stuka model kit, showing the aircraft artwork and branding.



**Figure 1.2:** A rendered image depicting the completed Italeri Ju-87 Stuka model, showcasing its detailed camouflage and markings.

## 2. SAFETY INFORMATION

---

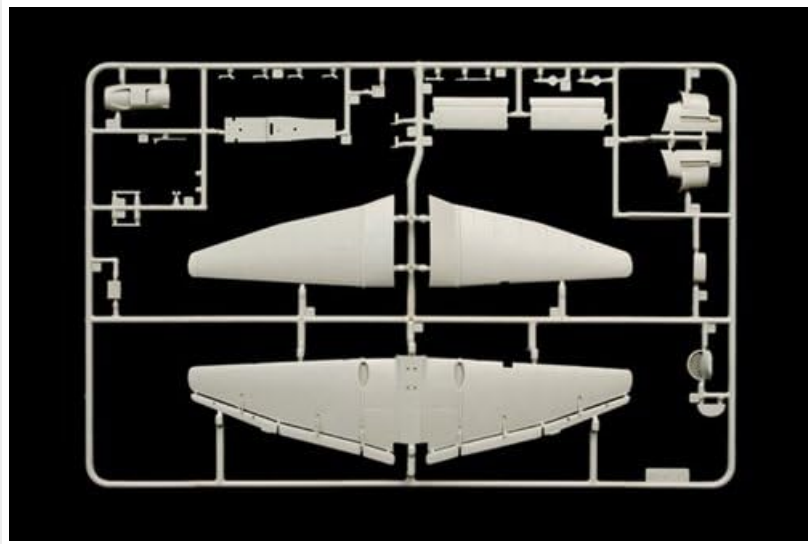
- **Small Parts:** This kit contains small parts that may pose a choking hazard. Keep out of reach of small children.
- **Sharp Tools:** Assembly requires the use of sharp tools such as hobby knives and tweezers. Exercise caution to prevent injury.
- **Adhesives and Paints:** Use glues and paints in a well-ventilated area. Refer to the manufacturer's safety data sheets for specific product warnings and instructions.
- **Proposition 65 Warning:** This product may contain chemicals known to the State of California to cause cancer and birth defects or other reproductive harm.

## 3. COMPONENTS OVERVIEW

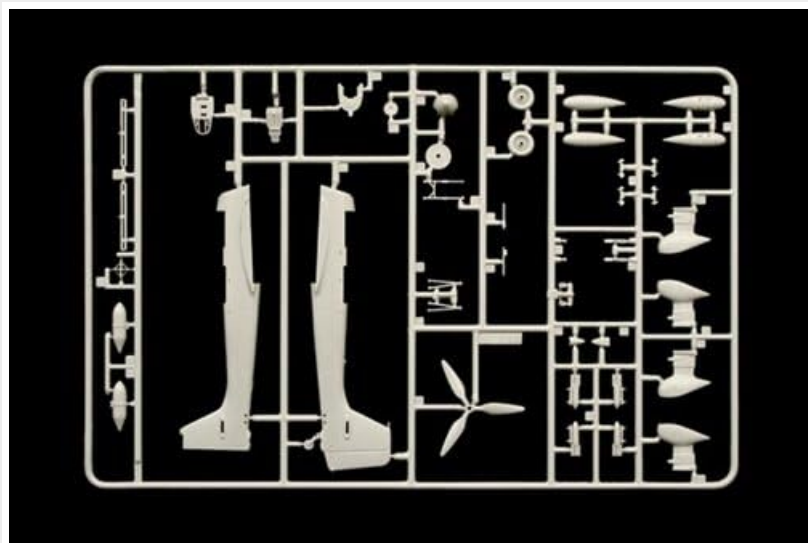
---

Before starting assembly, verify that all components are present and undamaged. The kit typically includes:

- Plastic sprues containing model parts
- Clear plastic sprue for canopy and windows
- Decal sheet
- Instruction guide



**Figure 3.1:** One of the plastic sprues, showing larger components such as wing sections and fuselage halves.



**Figure 3.2:** Another plastic sprue containing various smaller parts, including the propeller, landing gear components, and external ordnance.



**Figure 3.3:** The clear plastic sprue, which includes the canopy and other transparent parts for the model.

## 4. ASSEMBLY INSTRUCTIONS

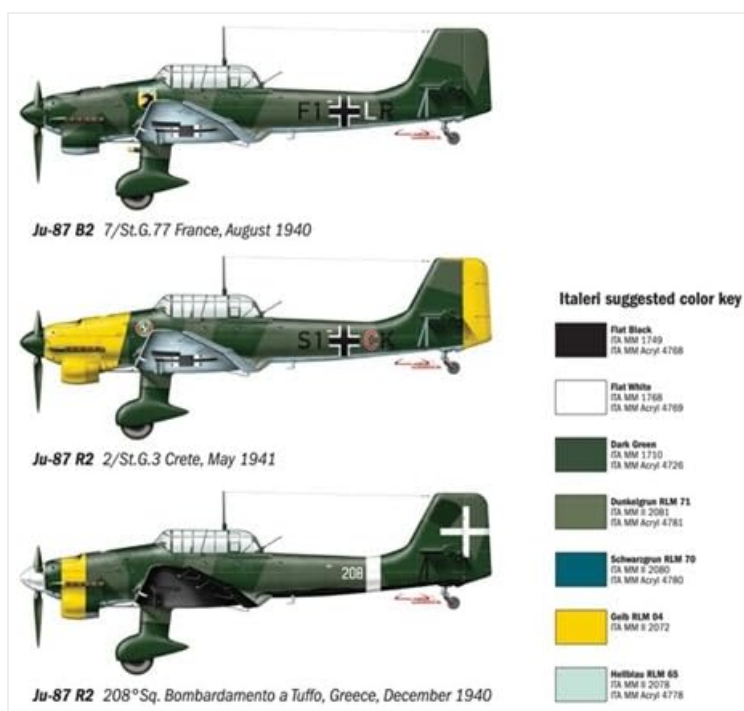
---

Follow the detailed, step-by-step illustrated instruction guide included in your kit for precise assembly. General steps include:

1. **Part Preparation:** Carefully cut parts from the sprues using a hobby knife or sprue cutters. Clean any excess plastic (flash) with a hobby knife or fine sandpaper.
2. **Dry Fit:** Before applying adhesive, dry fit parts to ensure proper alignment and fit.
3. **Adhesion:** Apply plastic cement sparingly to the mating surfaces and hold parts together until the adhesive sets.
4. **Sub-Assemblies:** Assemble smaller sections (e.g., cockpit, landing gear, wings) before joining them to the main fuselage.
5. **Painting (Pre-Assembly):** Some parts may be easier to paint before full assembly, such as cockpit interiors or landing gear. Refer to the painting guide for details.

## 5. PAINTING GUIDE

The instruction guide provides specific painting schemes for different versions of the Ju 87 Stuka. Refer to the color key for suggested Italeri paint numbers. Proper surface preparation, such as priming, is recommended for best results.



**Figure 5.1:** Illustration of various painting schemes for the Ju-87 B2 and R2 Stuka, including suggested Italeri color codes for each section.



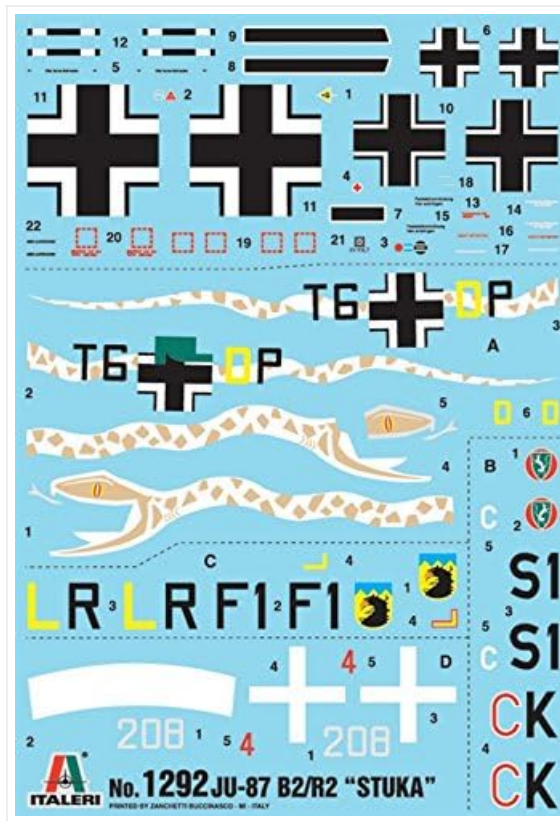


Figure 6.1: The decal sheet provided with the kit, featuring various national insignia, unit markings, and stencils for multiple aircraft versions.

## 7. RECOMMENDED TOOLS AND ADHESIVES

The following tools and adhesives are recommended for optimal assembly and finishing of your model kit:

- Plastic Cement (e.g., Italeri Plastic Cement with Brush)
- Precision Tweezers
- Hobby Knife with spare blades
- Cutting Mat
- Sprue Cutters
- Small Files or Sandpaper (various grits)
- Hand Drill (for specific modifications or detailing)

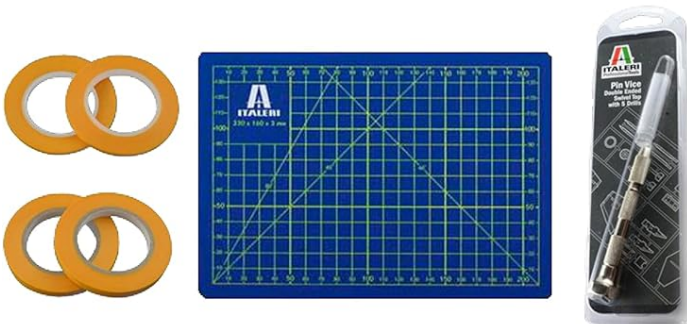
# 1:72 JU-87 B2 STUKA

Art.-Nr. 510001292



## Empfohlenes Werkzeug / Recommended Tools

### Werkzeuge / Tools:



Art. Nr.	Bezeichnung
510003990	ITALERI Plastikklebstoff m. Pinsel 15ml
510005049	ITALERI Acryl-Verdünner 60 ml
510050814	ITALERI Präzisions Pinzette, gerade (1)
510050815	ITALERI Werkzeug-Set Plastik-Modellbau
510050822	ITALERI Profi-Bastelmesser mit Klingen (6)
510050825	ITALERI Ersatzklingen spitz (5) #50822
510050826	ITALERI Maskierfilm-Rolle 3mm x 18m (2)
510050827	ITALERI Maskierfilm-Rolle 6mm x 18m (2)
510050829	ITALERI Schneidunterlage Mat A 230x160mm
510050831	ITALERI Handbohrer mit 5 Bohrer

### Klebstoffe / Cement:



Seite 2

Figure 7.1: An overview of recommended tools and adhesives, including plastic cement, tweezers, hobby knives, and a cutting mat, essential for model assembly.

## 8. SPECIFICATIONS

Feature	Detail
Brand	Italeri
Model Name	B2 Ju 87 Stuka
Model Number	510001292
Scale	1:72
Material	Plastic
Assembled Dimensions (Approx.)	15.4 cm (Length)
Item Weight (Kit)	3.5 Ounces
Recommended Age	14 years and up
Included Components	Instruction Guide

## 9. TROUBLESHOOTING

- **Missing or Damaged Parts:** In the event of missing or damaged components, please contact Italeri customer support or the retailer where the kit was purchased. Provide the model number (510001292) and specific part details.
- **Poor Part Fit:** If parts do not fit together smoothly, gently sand or trim the mating surfaces. Avoid forcing parts, as this can cause damage.
- **Decal Silvering:** Ensure the surface is glossy before applying decals. Use decal setting solutions to help decals conform and eliminate trapped air.

## 10. WARRANTY AND SUPPORT

---

Specific warranty information for Italeri model kits is typically provided with the product or can be obtained directly from the manufacturer's official website. For product support, inquiries regarding parts, or assembly assistance, please refer to the contact information provided by Italeri or your local distributor.

You can often find additional resources and contact details on the official Italeri website.