

manuals.plus /

- › [MAXTRACK](#) /
- › [MAXTRACK LT3L Halogen Transformer User Manual](#)

MAXTRACK LT3L

MAXTRACK LT3L Halogen Transformer User Manual

Model: LT3L | Brand: MAXTRACK



1. INTRODUCTION

This manual provides essential information for the safe and efficient installation and operation of your MAXTRACK LT3L Halogen Transformer. This electronic transformer is designed for 230/12V halogen lamps with a power output range of 50-150W. It features overload protection and a thermal fuse for enhanced safety. Please note that this model is non-dimmable.



Image 1: Front view of the MAXTRACK LT3L Halogen Transformer. This image displays the compact white casing of the transformer, with product specifications and basic wiring diagrams printed on its surface. The input and output terminals are visible on the ends.

2. SAFETY INSTRUCTIONS

Please read and understand all safety instructions before installation and operation. Failure to follow these instructions may result in electric shock, fire, or other hazards.

- **Electrical Hazard:** Installation must be performed by a qualified electrician or competent person in accordance with local electrical codes and regulations.
- **Power Disconnection:** Always disconnect power at the main circuit breaker before installing, servicing, or removing the transformer.
- **Voltage Compatibility:** Ensure the input voltage (230V) and output voltage (12V) are compatible with your electrical supply and halogen lamps.
- **Load Capacity:** Do not exceed the maximum load of 150W. The minimum load is 50W. Operating outside this range may damage the transformer or lamps.

- **Non-Dimmable:** This transformer is **not dimmable**. Do not connect it to a dimmer switch.
- **Ventilation:** Ensure adequate ventilation around the transformer to prevent overheating. Do not cover the unit.
- **Moisture:** Do not expose the transformer to moisture or operate in damp conditions.
- **Thermal Protection:** The transformer includes overload protection and a thermal fuse. If the unit shuts off, disconnect power, allow it to cool, and check for overload or short circuits before reconnecting.

3. SETUP AND INSTALLATION

Follow these steps for proper installation of the MAXTRACK LT3L Halogen Transformer.

3.1 Wiring Connections

1. **Prepare Wiring:** Ensure all wires are stripped to the appropriate length for secure connection to the terminal blocks. The transformer supports 0.75-2.5mm² cables for both primary and secondary connections.
2. **Input (Primary) Connection:**
 - Locate the input terminals marked "**PRI: 220-240V**" or "**L**" and "**N**".
 - Connect the live wire from your 230V AC mains supply to the "**L**" terminal.
 - Connect the neutral wire from your 230V AC mains supply to the "**N**" terminal.
 - Ensure connections are tight and secure.
3. **Output (Secondary) Connection:**
 - Locate the output terminals marked "**SEC: ~11.6V**". These are typically grouped for multiple lamp connections.
 - Connect your 12V halogen lamps to these terminals. You can connect multiple lamps in parallel, ensuring the total wattage does not exceed 150W and is not below 50W.
 - Ensure connections are tight and secure.
4. **Secure Wiring:** After making all connections, ensure the terminal covers are properly closed and secured.



Image 2: Close-up view of the transformer with the terminal cover removed, revealing the green screw terminals for wiring connections. The input (PRI) and output (SEC) terminals are clearly visible, ready for electrical wiring.

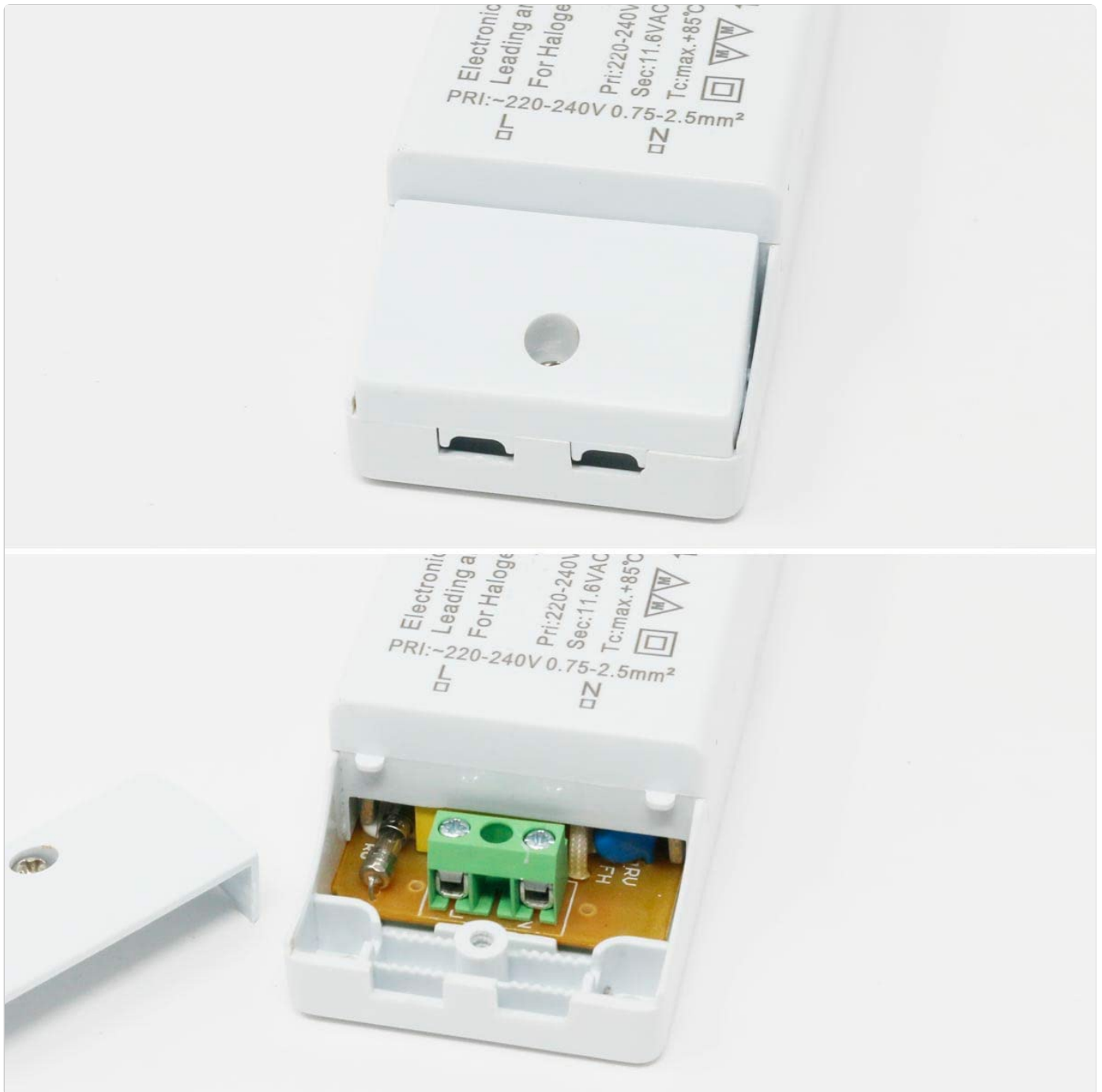


Image 3: Another close-up showing the internal wiring terminals, indicating where the primary (220-240V) and secondary (11.6V) connections are made. This view provides a clearer perspective on the connection points for live, neutral, and lamp wires.

3.2 Mounting

The transformer is designed for rail mounting. Ensure it is mounted in a location that allows for adequate air circulation to prevent overheating. Avoid mounting near heat sources or in enclosed spaces without ventilation.

4. OPERATION

Once properly installed and connected, the MAXTRACK LT3L Halogen Transformer operates automatically. When power is supplied to the primary input, it converts the 230V AC to 12V AC for your halogen lamps. As this is a non-dimmable unit, it will provide constant power to the lamps when switched on.

5. MAINTENANCE

The MAXTRACK LT3L Halogen Transformer requires minimal maintenance. Follow these guidelines:

- **Cleaning:** Ensure the transformer is clean and free from dust and debris. Disconnect power before cleaning. Use a dry, soft cloth. Do not use liquid cleaners.
- **Inspection:** Periodically inspect the wiring connections for any signs of loosening or damage.
- **Ventilation:** Ensure that the ventilation around the transformer remains unobstructed.

6. TROUBLESHOOTING

If you encounter issues with your transformer, refer to the following troubleshooting guide:

Problem	Possible Cause	Solution
Lamps do not light up.	<ul style="list-style-type: none">◦ No power supply.◦ Loose wiring connections.◦ Faulty lamps.◦ Transformer overload/underload.◦ Thermal fuse tripped.	<ul style="list-style-type: none">◦ Check circuit breaker and power switch.◦ Verify all wiring connections are secure (ensure power is off first).◦ Test lamps with a known working power source.◦ Ensure total lamp wattage is between 50W and 150W.◦ Disconnect power, allow transformer to cool for 15-30 minutes, then reconnect. Check for short circuits or overload.
Lamps flicker or are dim.	<ul style="list-style-type: none">◦ Underload (total wattage too low).◦ Loose connections.◦ Incompatible lamps.	<ul style="list-style-type: none">◦ Ensure total lamp wattage is at least 50W.◦ Check all wiring connections.◦ Ensure lamps are 12V halogen type.
Transformer gets excessively hot.	<ul style="list-style-type: none">◦ Overload.◦ Poor ventilation.◦ Short circuit in wiring or lamps.	<ul style="list-style-type: none">◦ Reduce total lamp wattage to below 150W.◦ Ensure adequate air circulation around the unit.◦ Inspect wiring and lamps for short circuits.

7. SPECIFICATIONS

Feature	Detail
Model Number	LT3L
Input Voltage (Primary)	220-240V AC, 50Hz
Output Voltage (Secondary)	~11.6V AC
Power Output Range	50-150W
Dimmability	Non-Dimmable
Protection Features	Overload Protection, Thermal Fuse
Dimensions (L x W x H)	160 x 46 x 30 mm (approx. 4.6 x 1.6 x 3 cm)
Weight	190 g

Feature	Detail
Cable Cross-Section	0.75-2.5 mm²
Mounting Type	Rail Mount




8. WARRANTY AND SUPPORT

For warranty information and technical support, please refer to the retailer or manufacturer’s official website. Keep your proof of purchase for any warranty claims. Do not attempt to repair the unit yourself, as this will void the warranty and may pose a safety risk.



© 2023 MAXTRACK. All rights reserved. Information in this manual is subject to change without notice.

Related Documents - LT3L

	Trust MaxTrack Mouse 17178 Quick Installation Guide A concise guide for installing and using the Trust MaxTrack Mouse (Model 17178), covering USB connection, driver installation, and DPI settings.
	Trust MaxTrack Mouse 17178 Quick Installation Guide Step-by-step instructions for quickly installing and setting up the Trust MaxTrack Mouse (model 17178), including driver installation and DPI adjustment.
	Amazfit Cheetah Pro: AI GPS Running Smartwatch with Titanium Bezel Explore the Amazfit Cheetah Pro, a premium AI-powered GPS running smartwatch. Features include industry-leading MaxTrack™ GPS, Zepp Coach™ AI training, a vibrant AMOLED display, lightweight titanium alloy construction, extensive sports modes, and comprehensive health monitoring.