

Carrera 30352

Carrera 30352 Control Unit Instruction Manual

For Digital 132 and Digital 124 Slot Car Race Track Sets

1. PRODUCT OVERVIEW

The Carrera 30352 Control Unit is a central component for Carrera Digital 132 and Digital 124 slot car race track systems. It serves as the primary connection point for various track accessories and enables advanced racing functionalities. This unit is designed to enhance your digital racing experience by providing precise control over vehicle performance and race dynamics.

Key Features:

- Forms the basis for digital racing fun.
- Enables programming of braking performance.
- Allows adjustment of vehicle power.
- Features tank capacity management.
- Includes Pit Stop functions.
- Provides Pace Car functions.
- Comes with 2 end pieces for track integration.



Figure 1: The Carrera 30352 Control Unit shown integrated into a Digital 132/124 slot car track layout, demonstrating its central role in the system.

2. SAFETY INFORMATION

CAUTION - ELECTRIC TOY: Not recommended for children under 8 years of age. As with all electric products, precautions should be observed during handling and use to prevent electric shock.

- Always ensure the power supply is disconnected before assembly, disassembly, or cleaning.
- Do not operate the control unit in wet conditions or near water.
- Regularly inspect the unit and all connected components for damage. Discontinue use if any damage is found.
- Use only original Carrera accessories and power supplies with this unit.

3. SETUP AND INSTALLATION

The Carrera 30352 Control Unit is designed for straightforward integration into your existing Carrera Digital 132 or Digital 124 track system. Follow these steps for proper setup:

1. **Placement:** Integrate the Control Unit into your track layout. It typically replaces a standard straight track section. Ensure it is placed on a stable, flat surface.
2. **Power Supply Connection:** Connect the power supply (sold separately) to the designated port on the Control Unit. Ensure the power supply matches the specifications for your Carrera Digital system.
3. **Speed Controller Connection:** Plug your speed controllers into the appropriate ports on the Control Unit. If using a speed controller extension set or Wireless-Tower, connect these first, then the controllers.
4. **Accessory Connections:** Connect other digital accessories such as the PC-Unit or Lap Counter 30342 (both sold separately) to their respective ports on the Control Unit.
5. **End Pieces:** Attach the two included end pieces to the Control Unit to ensure a smooth transition with adjacent track sections.
6. **Power On:** Once all connections are secure, connect the power supply to a wall outlet. The Control Unit should power

on, indicated by its status lights.



Figure 2: The Carrera 30352 Control Unit as packaged, highlighting the unit itself and its various connection points for system integration.

4. OPERATING INSTRUCTIONS

The Control Unit provides advanced features to customize your racing experience. Refer to the specific buttons and indicators on the unit for detailed control.

4.1 Programming Functions:

- **Braking Performance:** Use the dedicated button (often labeled 'BRAKE') to adjust the braking intensity of individual cars. This allows for more realistic cornering and strategic driving.
- **Power Adjustment:** The 'SPEED' button typically allows you to set the maximum speed or power output for each car, catering to different skill levels or car types.
- **Tank Capacity:** The 'FUEL' button manages the virtual fuel tank capacity. This introduces a strategic element where cars need to pit for refueling, adding realism to longer races.

4.2 Special Race Functions:

- **Pit Stop Functions:** When tank capacity is enabled, cars will need to enter the pit lane (if available) for refueling. The Control Unit manages the pit stop duration and fuel levels.

- **Pace Car Functions:** Activate a Pace Car (if configured) to lead the field during caution periods or for practice laps. The Control Unit controls its speed and behavior.

Your browser does not support the video tag.

Video 1: A product overview video demonstrating the Carrera Digital 132/124 system, which includes the Control Unit and its functionalities within a race track environment.

5. MAINTENANCE

Proper maintenance ensures the longevity and optimal performance of your Carrera 30352 Control Unit.

- **Cleaning:** Gently wipe the surface of the Control Unit with a soft, dry cloth. Avoid using abrasive cleaners or solvents, as these can damage the plastic and electronic components.
- **Storage:** When not in use, store the Control Unit in a dry, dust-free environment, away from direct sunlight and extreme temperatures.
- **Inspection:** Periodically check all cable connections for wear or damage. Ensure that the track connections to the end pieces are clean and free of debris to maintain good electrical contact.

6. TROUBLESHOOTING

If you encounter issues with your Carrera 30352 Control Unit, try the following troubleshooting steps:

- **No Power:**
 - Ensure the power supply is securely connected to both the Control Unit and a working wall outlet.
 - Verify that the power supply itself is functioning correctly.
- **Cars Not Responding:**
 - Check that speed controllers are properly plugged into the Control Unit.
 - Ensure cars are correctly placed on the track and have good contact with the power rails.
 - Confirm that the cars are assigned to the correct controller.
- **Intermittent Operation:**
 - Inspect all track connections for tightness and cleanliness. Dirty or loose connections can cause power interruptions.
 - Ensure no foreign objects are obstructing the track or the Control Unit's sensors.
- **Programming Issues:**
 - Refer to the specific programming instructions for your digital system, as procedures may vary slightly.
 - Reset the Control Unit by disconnecting and reconnecting the power supply.

If problems persist after attempting these steps, please contact Carrera customer support for further assistance.

7. SPECIFICATIONS


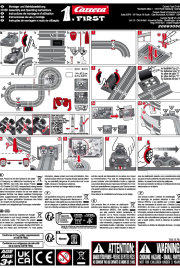

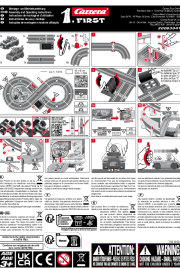
Feature	Detail
Product Model Number	30352
Product Dimensions	16.14 x 2.17 x 13.98 inches

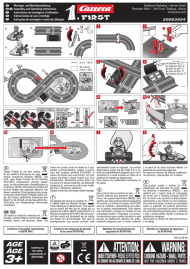
Item Weight	2.56 pounds
Manufacturer	Carrera
Recommended Age	8 years and up
Compatibility	Carrera Digital 132, Carrera Digital 124
Included Components	Carrera Digital Control Unit, 2 End Pieces

8. WARRANTY AND SUPPORT

For warranty information or technical support regarding your Carrera 30352 Control Unit, please refer to the official Carrera website or contact their customer service department. Keep your proof of purchase for any warranty claims.

Related Documents - 30352

	<p>Carrera DIGITAL 132 WIRELESS 2.0 NASCAR Daytona Challenge Slot Car Set</p> <p>Detailed contents and setup guide for the Carrera DIGITAL 132 WIRELESS 2.0 NASCAR Daytona Challenge slot car set, including track layout, car information, and accessories.</p>
	<p>Carrera FIRST Spidey Go Webs Go Assembly and Operating Instructions</p> <p>Detailed assembly and operating instructions for the Carrera FIRST Spidey Go Webs Go slot car track set, including safety information and multilingual guidance.</p>
	<p>Carrera DIGITAL 132 WIRELESS 2.0 24H Speed Slot Car Track Set - Instructions and Contents</p> <p>Detailed instructions and package contents for the Carrera DIGITAL 132 WIRELESS 2.0 24H Speed slot car track set. Includes multilingual guides, track layout, and component lists for Ferrari and Aston Martin cars.</p>
	<p>Carrera FIRST Paw Patrol Slot Car Race Track Assembly and Operating Instructions</p> <p>Comprehensive guide for assembling and operating the Carrera FIRST Paw Patrol slot car race track. Includes safety warnings, setup instructions, and maintenance tips.</p>



[Carrera FIRST Mario Kart Slot Car Race Track - Assembly and Operating Instructions](#)

Official assembly and operating instructions for the Carrera FIRST Mario Kart slot car race track set. Learn how to set up, operate, and maintain your race track. Includes safety warnings and technical specifications.



[Carrera DIGITAL 132 WIRELESS+ Montage- und Betriebsanleitung](#)

Umfassende Anleitung für den Aufbau und Betrieb der Carrera DIGITAL 132 Autorennbahn mit dem WIRELESS+ System, inklusive Sicherheitshinweisen, Anschlussanleitungen und Wartungstipps.