

Cisco WS-C2960S-48TS-L

Cisco Catalyst 2960 Series Switch WS-C2960S-48TS-L User Manual

Model: WS-C2960S-48TS-L

INTRODUCTION

This manual provides comprehensive instructions for the installation, operation, maintenance, and troubleshooting of the Cisco Catalyst 2960 Series Switch, model WS-C2960S-48TS-L. Designed for optimal power efficiency and robust network performance, this switch is a key component for various network environments. Please read this manual thoroughly before operating the device.

SAFETY INFORMATION

General Safety Guidelines:

- Ensure proper grounding for the device.
- Do not operate the switch in wet or excessively humid environments.
- Use only the power supply unit provided or specified by Cisco.
- Refer to local electrical codes and regulations for proper installation.
- Avoid blocking ventilation openings to prevent overheating.

PACKAGE CONTENTS

The Cisco Catalyst 2960 Series Switch WS-C2960S-48TS-L package should contain the following items:

- Cisco Catalyst 2960 Series Switch (WS-C2960S-48TS-L)
- Power Supply Unit

Note: Rack mount kits and power cables are typically included but may vary by seller or region.

PRODUCT OVERVIEW

The Cisco Catalyst 2960 Series Switch WS-C2960S-48TS-L is a high-performance network switch designed for enterprise-class access. It features 48 Gigabit Ethernet ports and supports advanced power management capabilities for efficient network operation.

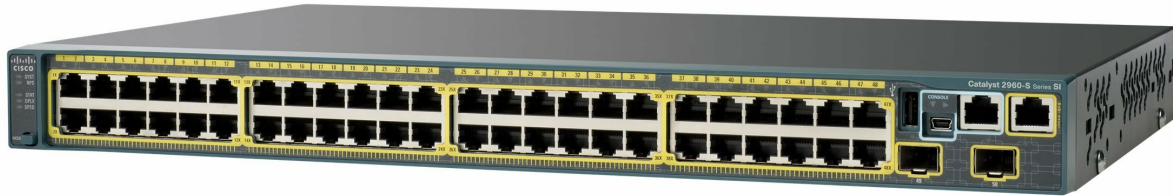


Figure 1: Front view of the Cisco Catalyst 2960 Series Switch WS-C2960S-48TS-L, displaying its 48 RJ45 ports and various indicator lights.

SETUP

1. Site Preparation

Ensure the installation site is clean, dry, and has adequate ventilation. Maintain appropriate temperature and humidity levels as per environmental specifications to ensure optimal performance and longevity of the switch.

2. Mounting the Switch

The switch can be mounted in a standard 19-inch equipment rack. Secure the rack-mount brackets (if provided) to the sides of the switch using the appropriate screws. Then, attach the switch to the rack using suitable rack screws, ensuring it is stable and level.

3. Connecting Power

Connect the power cable to the power supply unit on the rear of the switch and then to a grounded AC power outlet. Verify that the power source meets the switch's voltage requirements (240 Volts).

4. Initial Network Connection

Connect your network devices (e.g., computers, servers, other switches) to the RJ45 ports on the front panel using standard Ethernet cables. The switch supports a data transfer rate of 1000 Megabits Per Second (Gigabit Ethernet) for high-speed connectivity.

OPERATING THE SWITCH

Powering On

After connecting the power cable, the switch will automatically power on. Observe the system LED indicators on the front panel for boot-up status. The system LED should turn green once the switch has successfully initialized.

Indicator Lights

The front panel features various LED indicators that display the operational status of the switch and its individual ports. These LEDs provide visual feedback on link status, activity, and potential errors. Refer to the official Cisco documentation for a detailed explanation of each LED's behavior and meaning.

Basic Configuration

For initial configuration and management, connect a console cable to the console port (if available) and use a terminal emulation program on a computer. Alternatively, if the switch has already acquired an IP address, you may be able to access its management interface via a web browser or command-line interface (Telnet/SSH).

MAINTENANCE

Cleaning

Periodically clean the exterior of the switch with a soft, dry, lint-free cloth. Ensure that all ventilation openings are free from dust and obstructions to maintain proper airflow. Do not use liquid cleaners or aerosol sprays directly on the switch.

Firmware Updates

Regularly check the official Cisco support website for available firmware updates for your specific model. Keeping the firmware current ensures optimal performance, security, and access to new features. Always follow Cisco's official procedures for firmware upgrades to avoid potential issues.

Environmental Considerations

Operate the switch within its specified temperature and humidity ranges. Extreme environmental conditions can lead to device malfunction or premature failure. Ensure the operating environment is stable and within recommended limits.

TROUBLESHOOTING

No Power

- Verify the power cable is securely connected to both the switch and a functional power outlet.
- Check the power source (e.g., wall outlet, power strip) for functionality.
- Ensure the power supply unit is correctly seated and connected to the switch.

No Network Connectivity

- Check the link status LEDs on the connected ports. If an LED is off, verify the Ethernet cable connection at both ends.
- Ensure the connected device (e.g., computer, server) is powered on and functioning correctly.
- Verify that the network configuration (IP addresses, VLANs) is correct for the connected devices and the switch.

System Malfunctions

If the switch exhibits unusual behavior or error messages, consult the official Cisco documentation for specific error codes or LED patterns. A factory reset might be necessary as a last resort, but be aware that this will erase all custom configurations on the switch.

SPECIFICATIONS

The following are key specifications for the Cisco Catalyst 2960 Series Switch WS-C2960S-48TS-L:

Feature	Detail
Model Number	WS-C2960S-48TS-L
Brand	Cisco
Number of Ports	48 (RJ45)
Data Transfer Rate	1000 Megabits Per Second (Gigabit Ethernet)
Interface Type	RJ45
Voltage	240 Volts
Item Weight	10.6 Pounds (approx. 4.81 kg)
Product Dimensions	17.52 x 11.77 x 1.77 inches (approx. 44.5 x 29.9 x 4.5 cm)
Compatible Devices	Desktop (and other network devices)

WARRANTY INFORMATION

This Cisco Catalyst 2960 Series Switch WS-C2960S-48TS-L typically comes with a standard manufacturer's warranty. For specific warranty terms and conditions, including duration and coverage, please refer to the documentation provided with your purchase or visit the official Cisco website. Any additional warranties offered by sellers are separate and should be verified with your point of purchase.

CUSTOMER SUPPORT

For technical assistance, product documentation, or further support regarding your Cisco Catalyst 2960 Series Switch, please visit the official Cisco support website. You can find detailed contact information, knowledge bases, and resources on [Cisco's Support Portal](#). Ensure you have your product model number (WS-C2960S-48TS-L) ready when contacting support.