

Phylrich K6530/003

Phylrich Round Hand Shower With Hose Instruction Manual

Model: K6530-003

INTRODUCTION

This manual provides detailed instructions for the installation, operation, maintenance, and troubleshooting of your Phylrich Round Hand Shower With Hose, Model K6530-003. Please read this manual thoroughly before installation and use to ensure proper function and longevity of your product.

Key features include:

- Brand: Phylrich
- Finish: Polished Brass
- Design: Round Hand Shower with Hose

PRODUCT OVERVIEW





Figure 1: Main view of the Phylrich Round Hand Shower with Hose, showcasing its polished brass finish and ergonomic design.





Figure 2: Side view of the hand shower, highlighting the connection point for the hose.

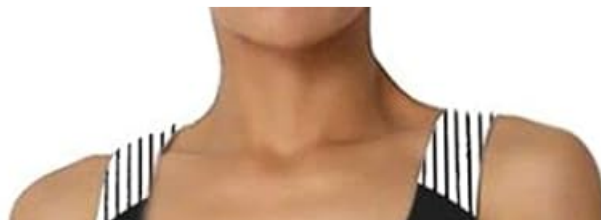






Figure 3: Close-up view of the hand shower's spray face, showing the nozzle configuration.

Size	1/2Bust	Length
S	17.32	25.19
M	18.89	25.98
L	20.47	27.55
XL	22.04	28.34
XXL	26.77	29.13

Figure 4: Detailed view of the hose connection and handle design.

SETUP AND INSTALLATION

Before beginning installation, ensure you have all necessary tools and that the water supply is turned off. Professional installation is recommended.

Tools Required:

- Adjustable Wrench
- Plumber's Tape (Teflon Tape)
- Soft Cloth

Installation Steps:

1. **Prepare the Connection:** Ensure the existing shower arm or wall outlet is clean and free of debris. Wrap the threads of the shower arm or wall outlet with plumber's tape (2-3 wraps clockwise).
2. **Attach the Hose:** Screw one end of the hand shower hose onto the prepared shower arm or wall outlet. Hand-tighten first, then use an adjustable wrench to tighten an additional quarter to half turn. Do not overtighten.
3. **Connect Hand Shower:** Screw the hand shower head onto the other end of the hose. Ensure the washer is properly seated inside the hose connection. Hand-tighten securely.
4. **Check for Leaks:** Slowly turn on the water supply and check all connections for leaks. If leaks occur, tighten slightly more or reapply plumber's tape.
5. **Mount the Holder (if applicable):** If your setup includes a wall-mounted holder for the hand shower, follow its specific installation instructions to secure it to the wall at a convenient height.

OPERATING INSTRUCTIONS

The Phylrich Round Hand Shower is designed for ease of use and provides a comfortable showering experience.

Using Your Hand Shower:

1. **Water Flow:** Turn on your shower's main water valve to initiate water flow to the hand shower.
2. **Temperature Control:** Adjust the water temperature using your shower's mixing valve.
3. **Handheld Use:** Remove the hand shower from its holder (if applicable) to use it as a handheld spray.
4. **Spray Settings:** This model typically provides a single, consistent spray pattern. For models with multiple spray settings, rotate the spray face or a designated lever to cycle through options.
5. **Returning to Holder:** After use, place the hand shower back into its holder securely.

MAINTENANCE AND CARE

Proper care will help maintain the finish and performance of your Phylrich hand shower.

Cleaning Instructions:

- **Regular Cleaning:** Clean the hand shower regularly with a soft, damp cloth and mild soap.
- **Avoid Harsh Cleaners:** Do not use abrasive cleaners, scouring pads, or chemical solvents, as these can damage the polished brass finish.
- **Mineral Deposits:** For hard water spots or mineral deposits, use a solution of equal parts white vinegar and water. Apply with a soft cloth, let sit for a few minutes, then rinse thoroughly and dry.
- **Nozzle Cleaning:** If spray nozzles become clogged, gently rub them with your finger or a soft brush to dislodge mineral buildup.

TROUBLESHOOTING

Refer to the following table for common issues and their solutions.

Problem	Possible Cause	Solution
Low Water Pressure	Clogged nozzles or mineral buildup.	Clean the spray nozzles by gently rubbing them. Check for kinks in the hose. Ensure main water supply is fully open.
Leaking at Connections	Loose connections or insufficient plumber's tape.	Tighten connections slightly. If leaking persists, disassemble, reapply plumber's tape, and reassemble. Ensure washers are properly seated.
Water Not Shutting Off Completely	Issue with the main shower valve, not the hand shower itself.	Inspect and service your main shower mixing valve. Consult a plumber if necessary.

SPECIFICATIONS

- Brand:** Phylrich
- Model Number:** K6530-003
- Part Number:** K6530/003
- Shape:** Round
- Finish:** Polished Brass
- ASIN:** B003I98SXG

UPC: 883908830319

Date First Available: October 15, 2010

Manufacturer: Phylrich

WARRANTY AND SUPPORT

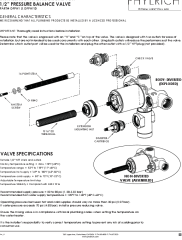
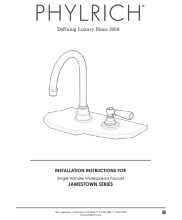

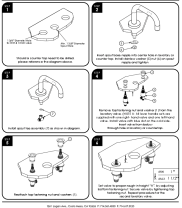
For warranty information or technical support, please contact Phylrich customer service or the authorized dealer from whom you purchased this product. Keep your proof of purchase for warranty claims.

For assistance with this product, you may also contact the seller, [Flow Home](#), through the Amazon platform.



© 2023 Phylrich. All rights reserved. Information in this manual is subject to change without notice.

Related Documents - K6530/003

	<p>Phylrich DFPHY & DFPHYID 1/2" Pressure Balance Valve Installation Instructions</p> <p>Comprehensive installation guide for the Phylrich DFPHY and DFPHYID 1/2 inch pressure balance valve, covering general characteristics, valve specifications, rough-in dimensions, temperature settings, and maintenance procedures.</p>
	<p>Phylrich Jamestown Series Single Handle Widespread Faucet Installation Guide</p> <p>Comprehensive installation instructions for the Phylrich Jamestown Series single handle widespread faucet with high spout and lever handle. Covers spout, valve, and drain assembly with detailed steps and textual descriptions of diagrams.</p>
	<p>Phylrich 1-124 Wall Mounted Bidet Installation Instructions</p> <p>Comprehensive installation guide for the Phylrich 1-124 Wall Mounted Bidet, detailing valve specifications, parts breakdown, rough-in dimensions, installation procedures, and maintenance tips for optimal performance and longevity.</p>
	<p>Phylrich Transition Series Lavatory Faucet Installation Guide & Limited Warranty</p> <p>Comprehensive installation instructions and limited warranty details for the Phylrich Transition Series lavatory faucet with a dry tee flush mounted valve, covering setup, drain assembly, and product coverage.</p>

Jamestown Series Wall Lavatory Set Installation Instructions

Detailed installation guide for the Phylrich Jamestown Series Wall Lavatory Set, including models 165-11 (Cross Handle) and 165-12 (Lever Handle). Covers spout, escutcheon, handle installation, trim adjustments, and cartridge replacement with torque specifications.

Phylrich 1/2 Mini Thermostatic Valve Installation and Maintenance Guide

Comprehensive installation, maintenance, and operation guide for Phylrich 1/2 Mini Thermostatic Valve models (1-115, 1-116, 1-138, 1-117, 1-132), featuring volume control and diverter options.