

[Manuals.plus](#) /

› [WOODRIVER](#) /

› Woodriver Dust Connection 2-1/2" OD Hose Splice Dust Collection Fitting Instruction Manual

WOODRIVER 150758

Woodriver Dust Connection 2-1/2" OD Hose Splice Dust Collection Fitting Instruction Manual

Brand: WOODRIVER | Model: 150758

INTRODUCTION

The Woodriver Dust Connection Hose Splice is designed to efficiently join two lengths of dust collection hose or connect common shop vacuum hoses. This molded plastic fitting provides a secure and reliable connection for various dust management setups in workshops and industrial environments.

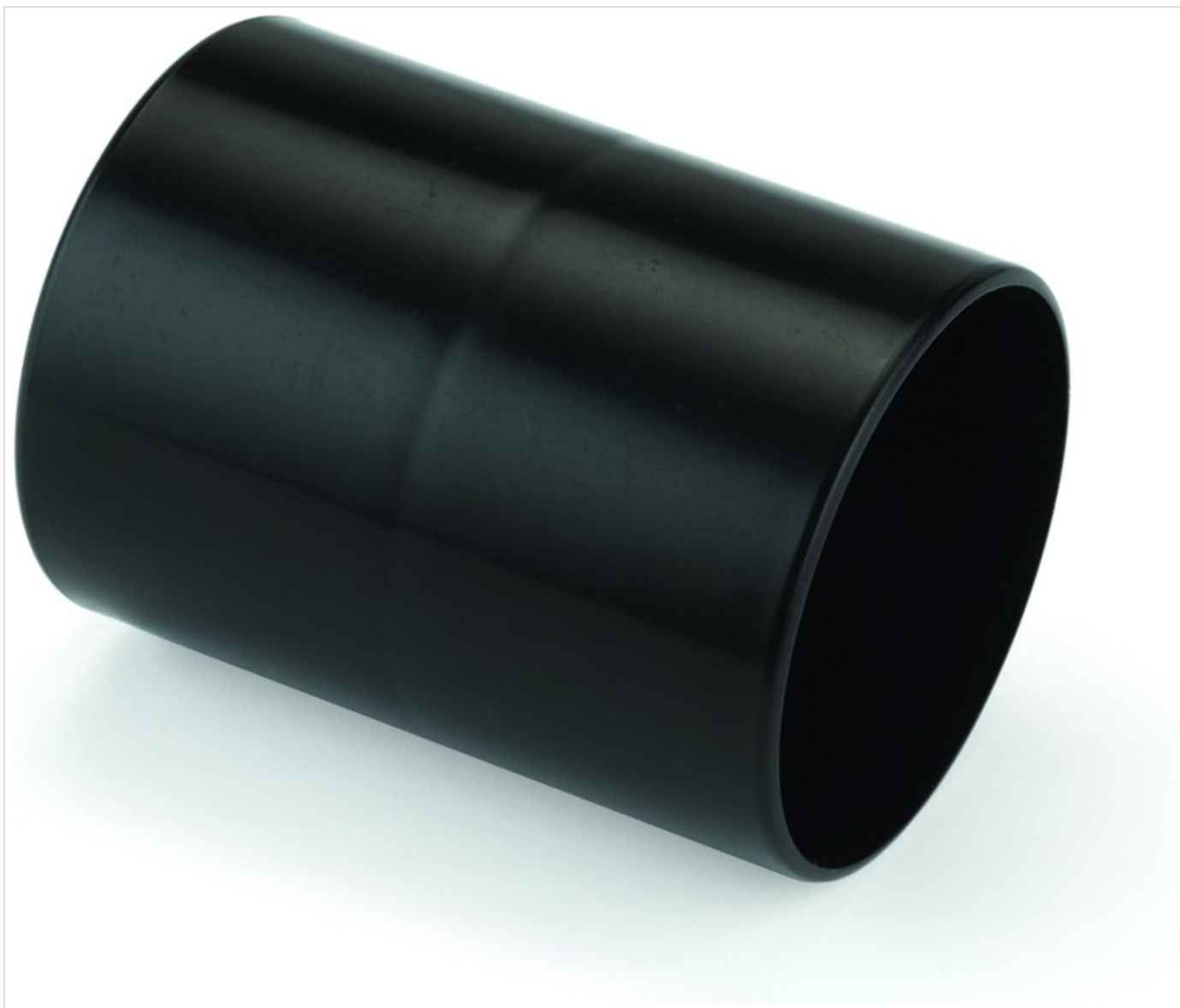


Image: The Woodriver Dust Connection Hose Splice, a black molded plastic fitting.

Key features include:

- Connects two lengths of 2-1/2" dust collection hose.
- Compatible with common shop vacuum hoses featuring 2-1/4" ends.
- Constructed from polypropylene resin for flexibility and resilience.
- Approximately 3 inches long with a 2-1/2 inch outside diameter and 2-1/4 inch tapered inside diameter on each end.

SETUP AND INSTALLATION

This hose splice is designed for straightforward installation. Ensure that the hoses you intend to connect are clean and free of debris for a secure fit.

Connecting Dust Collection Hoses:

1. Identify the ends of the 2-1/2" dust collection hoses you wish to join.
2. Insert one end of the hose splice into the opening of the first 2-1/2" dust collection hose. Apply firm, even pressure to ensure a snug fit.
3. Repeat the process for the second 2-1/2" dust collection hose, inserting its end onto the other side of the splice.
4. For a more permanent or airtight connection, consider using hose clamps or tape around the connection points.

Connecting Shop Vacuum Hoses:

The tapered inside diameter of the splice allows for connection with common shop vacuum hoses that have approximately 2-1/4" ends.

1. Locate the 2-1/4" end of your shop vacuum hose.
2. Insert the 2-1/4" end of the shop vacuum hose into the tapered inside diameter of the splice. The tapered design will create a friction fit.
3. If connecting two shop vacuum hoses, repeat the process for the second hose on the other end of the splice.



Image: Example of a dust collection fitting, similar to the hose splice, connected within a workshop setup.

OPERATING PRINCIPLES

The Woodriver Dust Connection Hose Splice functions as a passive connector, creating a continuous pathway for dust and debris to be transported through your dust collection system. Once hoses are securely attached, the splice maintains the integrity of the airflow, ensuring efficient dust extraction from woodworking machinery or other sources.

Its simple design requires no active operation. The effectiveness of the splice relies on proper fitment and, if desired, additional securing methods like hose clamps to prevent air leaks and maintain suction.

CARE AND MAINTENANCE

The Woodriver Dust Connection Hose Splice is designed for durability and requires minimal maintenance.

- **Cleaning:** Periodically inspect the splice for any accumulation of dust or debris inside. Clean with a dry cloth or compressed air. For stubborn residue, a damp cloth with mild soap can be used, followed by thorough drying.
- **Inspection:** Regularly check the splice for any signs of cracks, damage, or wear that could compromise its sealing ability. Replace the splice if any significant damage is observed.
- **Storage:** Store the splice in a clean, dry environment away from direct sunlight and extreme temperatures when not in use.

TROUBLESHOOTING

Loose Connection or Air Leaks:

- **Issue:** Hoses feel loose on the splice, or you notice a loss of suction in your dust collection system.
- **Solution:**
 - Ensure the correct hose sizes are being used. This splice is designed for 2-1/2" OD dust collection hoses and 2-1/4" tapered ID shop vacuum hoses.
 - Apply more firm, even pressure when inserting the hoses onto the splice.
 - Utilize hose clamps or strong adhesive tape (e.g., duct tape) around the connection points to create a tighter seal and prevent air leakage.
 - Inspect the ends of your hoses for damage or deformation that might prevent a good seal.

Difficulty Inserting Hoses:

- **Issue:** Hoses are too tight to fit onto the splice.
- **Solution:**
 - Verify that the hose diameters match the splice's specifications (2-1/2" OD for dust collection, 2-1/4" tapered ID for shop vac).
 - Slightly warm the end of the hose with a heat gun (on a low setting) or hot water to make it more pliable, then quickly attempt to fit it onto the splice. Exercise caution to avoid overheating or deforming the hose.

PRODUCT SPECIFICATIONS

Brand	WOODRIVER
Model Number	150758
Material	Polypropylene
Color	Black
Product Dimensions (L x W)	3"L x 2.5"W
Outside Diameter	2.5 Inches
Inside Diameter (Tapered)	2.25 Inches
Nominal Wall Thickness	0.1 inches
Item Weight	1 Pound
UPC	844788024700
Manufacturer	Woodcraft Supply
Date First Available	March 30, 2010

WARRANTY INFORMATION

For detailed warranty information regarding the Woodriver Dust Connection Hose Splice, please refer to the manufacturer's official website or contact Woodcraft Supply directly. Warranty terms and conditions may vary.

CUSTOMER SUPPORT

Should you have any questions, require assistance, or need to report an issue with your Woodriver Dust Connection Hose Splice, please contact the manufacturer or visit their official resources:

- **Manufacturer:** Woodcraft Supply
- **Online Store:** [Visit the WOODRIVER Store on Amazon](#)
- For further assistance, please refer to the contact information provided on the Woodcraft Supply official website.