

manuals.plus /

› [KENT](#) /

› [Kent KFM4 Anti-Static Hair Brush for Men - Instruction Manual](#)

KENT KFM4

Kent KFM4 Anti-Static Hair Brush for Men - Instruction Manual

Model: KFM4

INTRODUCTION

Thank you for choosing the Kent KFM4 Anti-Static Hair Brush. This folding mini hairbrush is designed for effortless grooming, providing frizz-free styling and daily hair care for men. Its compact and portable design makes it an ideal travel companion.



Image: The Kent KFM4 Anti-Static Folding Hair Brush in its open, ready-to-use configuration. The brush features grey bristles and a black handle, designed for compact storage and effective hair grooming.

The KFM4 features non-scratch ion quills that gently glide through knots while massaging the scalp. The brush base is engineered to reduce static electricity, incorporating Andesite quartz for added hair benefits.

SETUP

The Kent KFM4 Anti-Static Hair Brush is designed for immediate use with minimal setup.

1. Remove the hair brush from its packaging.
2. Clean all removable parts if necessary before first use.
3. To prepare for use, unfold the brush by extending the handle until it locks into place.
4. The brush is suitable for use on both dry and damp hair.

KENT FOR MEN FOLDING HAIRBRUSH



Folding hairbrush,
ideal for gently
detangling hair
on the go.



Image: The Kent KFM4 brush shown in a partially folded position, highlighting its ability to fold for compact storage and portability, making it ideal for travel.

OPERATING INSTRUCTIONS

Follow these steps for effective use of your Kent KFM4 hair brush:

- **Unfolding the Brush:** Gently extend the handle until the brush head is fully open and securely locked.
- **Brushing Technique:** Start by gently brushing through your hair, beginning from the roots and moving towards the ends. For detangling, work on smaller sections of hair.
- **Anti-Static Benefit:** The specially designed ion quills and Andesite quartz base help to reduce static electricity, resulting in smoother, frizz-free hair.
- **Styling:** This brush is suitable for daily grooming and can be used effectively with various styling products to achieve desired hair styles.
- **Folding for Storage:** To fold the brush, gently release the locking mechanism (if present, otherwise just fold) and collapse the handle towards the brush head until it is compact. This makes it easy to fit into a pocket or handbag.

KENT FOR MEN FOLDING HAIRBRUSH

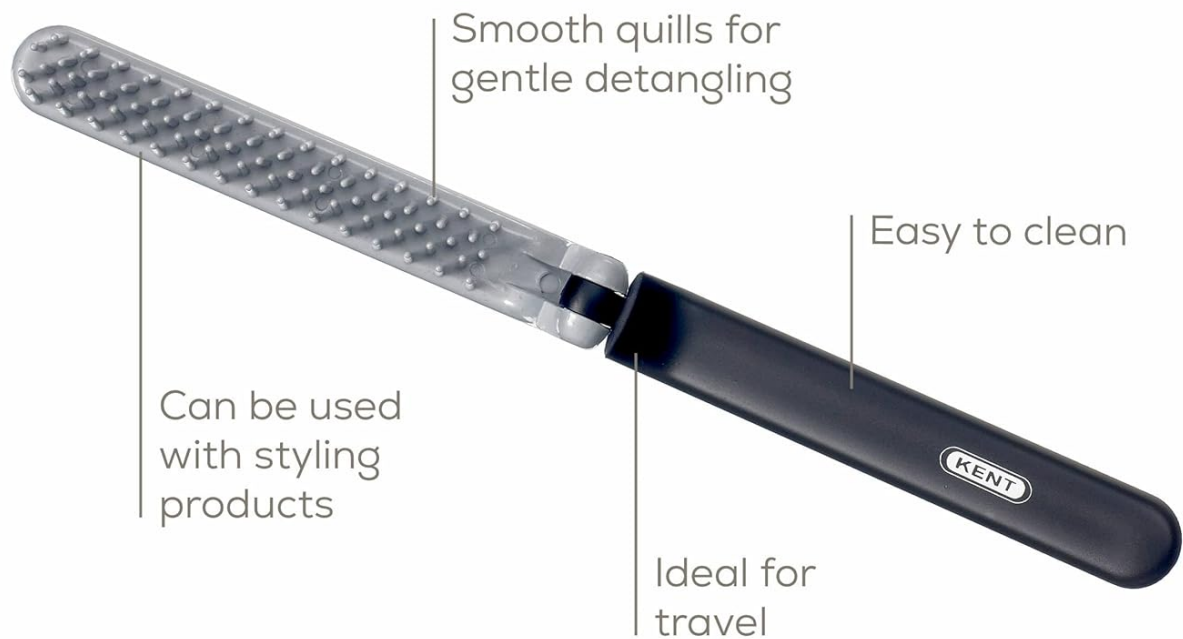


Image: An illustration of the Kent KFM4 brush with callouts pointing to its features: smooth quills for gentle detangling, ease of cleaning, compatibility with styling products, and its suitability as a travel item.



Image: A detailed close-up of the brush head, showcasing the non-scratch nylon quills designed for gentle detangling and scalp massage.



HAIR TYPE

- All hair types

IDEAL FOR

- Detangling
- Styling
- Travel



Image: The Kent KFM4 brush alongside text specifying its versatility for all hair types and its primary uses: detangling, styling, and travel.

MAINTENANCE

Proper maintenance will extend the life of your Kent KFM4 hair brush.

- **Cleaning:** Regularly remove loose hair from the bristles. The brush is designed to be easy to clean. You can gently wash the bristles with mild soap and lukewarm water. Rinse thoroughly and allow to air dry completely before folding or storing.
- **Storage:** When not in use, fold the brush to protect the bristles and store it in a clean, dry place. Its compact size makes it ideal for storage in a drawer, travel bag, or pocket.
- **Avoid Harsh Chemicals:** Do not use harsh chemicals or abrasive cleaners on the brush, as this may damage the materials.

TROUBLESHOOTING

If you encounter any issues with your Kent KFM4 hair brush, consider the following:

Problem	Possible Cause	Solution
Hair still static after brushing.	Extremely dry hair or environment.	Ensure hair is adequately moisturized. Consider using a leave-in conditioner or anti-frizz product. The brush's anti-static properties work best on hair with some moisture.
Brush not detangling effectively.	Excessive tangles or improper technique.	Brush hair in smaller sections. Start detangling from the ends and work your way up to the roots. Ensure the brush is clean and free of accumulated hair.
Brush mechanism feels stiff.	Accumulated debris or lack of lubrication.	Clean the hinge area of the folding mechanism. Ensure no hair or debris is obstructing the fold. Avoid applying oil or lubricants.

SPECIFICATIONS

Feature	Detail
Model Number	KFM4
Dimensions (Open)	Approx. 7" x 0.5" x 0.5" (185mm x 14mm)
Dimensions (Folded)	Approx. 3.75" (97mm)
Weight	0.67 ounces (approx. 19 grams)
Bristle Material	Nylon
Handle Material	Plastic
Color	Gray/Black
Special Features	Anti-static (Andesite quartz), Folding design, Non-scratch ion quills

KENT FOR MEN FOLDING HAIRBRUSH

KFM4

A folding brush that
detangles and styles hair
for effortless grooming.



14mm



186mm

*Folded length 97mm


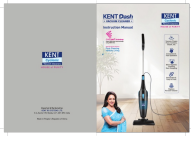


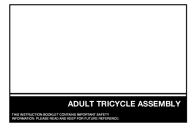

Image: A technical diagram illustrating the dimensions of the Kent KFM4 brush, showing its open length (185mm), width (14mm), and folded length (97mm).

WARRANTY AND SUPPORT

Specific warranty details and direct customer support contact information are not provided within this manual. For warranty inquiries, product support, or to view the full product selection, please visit the official KENT website or refer to the product packaging for contact details.

You can also visit the KENT Store on Amazon: [KENT Amazon Store](#)

Related Documents - KFM4

	<p>KENT Marvel Mineral RO™ Water Purifier: Installation, Operation & Maintenance Handbook</p> <p>Comprehensive guide for the KENT Marvel Mineral RO™ Water Purifier, covering installation, operation, maintenance, technical specifications, and safety instructions. Learn how to ensure pure and healthy drinking water.</p>
	<p>KENT Dash Vacuum Cleaner Instruction Manual - Features, Usage, and Warranty</p> <p>Comprehensive instruction manual for the KENT Dash Vacuum Cleaner. Learn about its features, assembly, operation, maintenance, troubleshooting, technical specifications, and warranty terms. Includes safety guidelines for optimal and safe use.</p>
	<p>KENT Glaze Stainless Steel Electric Kettle 1.5L - Instruction Manual, Features & Specifications</p> <p>Official instruction manual and technical specifications for the KENT Glaze Stainless Steel Electric Kettle. Learn about its features, usage, cleaning, maintenance, and warranty information for this 1.5L, 1500W appliance.</p>
	<p>KENT Diamond Induction Cooktop 2000W: User Manual, Features & Specifications</p> <p>Comprehensive guide for the KENT Diamond Induction Cooktop 2000W. Covers features, operation, safety instructions, suitable cookware, troubleshooting, and technical specifications for model 16130.</p>
	<p>Kent Adult Tricycle Assembly Instructions and Owner's Manual</p> <p>Comprehensive assembly instructions and owner's manual for Kent adult tricycles, covering safety, parts identification, assembly steps, maintenance, and troubleshooting for a safe and enjoyable riding experience.</p>
	<p>KENT Sunstar Infrared Cooktop User Manual and Specifications</p> <p>Comprehensive user manual and technical specifications for the KENT Sunstar Infrared Cooktop (Model 116157). Provides details on features, operation, safety guidelines, cleaning, maintenance, troubleshooting, and warranty information.</p>

Documents - KENT – KFM4



[\[pdf\]](#) Frequently Asked Questions

Kent M Wells Brands Gentlemen s Grooming and Outdoor Lifestyle English Brushes Combs 2019 v 1625492935 cdn shopify files 1 0583 2110 9167 |||

www.iandjccorp.com 1 2 www.iandjccorp.com Table of Contents 04. Discovering Kent 06. Perfect ... r products KFM3 MSRP 22.50 Gel styler, flat narrow, for short hair, for use with hair products **KFM4** MSRP 16.00 Folding styler, all hair type

www.iandjccorp.com 35 Finest Men s is a hand fi...

lang:en score:15 filesize: 10.45 M page_count: 56 document date: 2019-07-10



[Radio & Records Industry Newspaper - March 1, 1991](#)

This edition of Radio & Records, dated March 1, 1991, features industry news on FCC proposals, legal battles, executive changes, financial regulations, and market analysis, alongside music and radio charts.

lang:en score:9 filesize: 15.58 M page_count: 88 document date: 2015-08-22