

Manuals+

[Q & A](#) | [Deep Search](#) | [Upload](#)

manuals.plus /

› [Intermatic](#) /

› [Intermatic FF430M Spring Wound Timer User Manual](#)

Intermatic FF430M

Intermatic FF430M Spring Wound Timer User Manual

Model: FF430M | Brand: Intermatic

INTRODUCTION

The Intermatic FF430M is a mechanical, spring-wound timer designed to provide automatic shut-off for various electrical loads. This energy-saving device requires no electricity to operate and is ideal for controlling fans, lights, motors, and heaters. It is designed to replace any standard wall switch, fitting into single or multi-gang boxes, and features an easy 'press-on' knob design for quick installation.

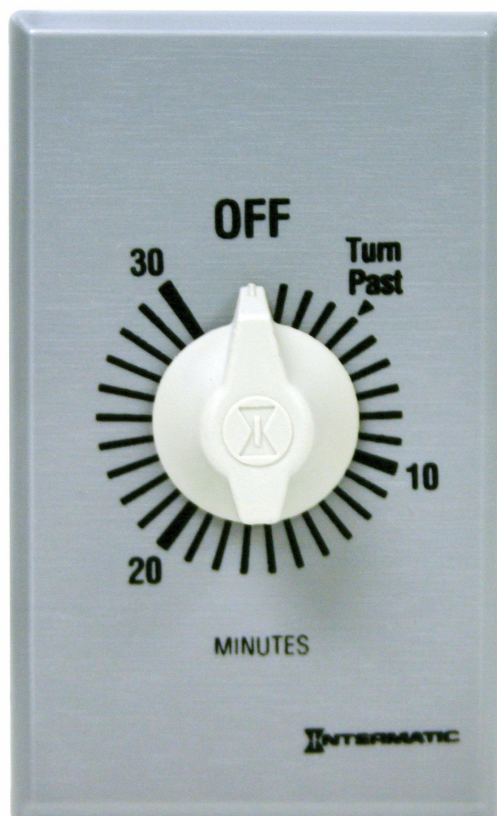



Figure 1: Front view of the Intermatic FF430M Spring Wound Timer.

KEY FEATURES

- **Mechanical Operation:** Requires no electricity to operate, providing energy savings.
- **Adjustable Timing:** Offers a timing range from 0 to 30 minutes.
- **DPST Contact Form:** Double Pole, Single Throw contacts for robust control.
- **Versatile Application:** Suitable for automatically limiting the 'ON' time of fans, lights, motors, and heaters.
- **Easy Installation:** Features 'up front' terminal connections with teeter-type terminals and a 'press-on' knob design.
- **Aesthetic Design:** Supplied with a molded white time dial plate designed to fit both toggle and decorator style switch plates without field modifications.
- **Durable Construction:** Rugged time dial plate designed to withstand commercial environments.
- **Certifications:** UL Listed (E76987) and CSA Certified (Lr3730) for safety and compliance.

TECHNICAL SPECIFICATIONS

FF Series				
Model Number	Time Cycle	Switch	Hold	Color
FF5M	5 Minutes	SPST	No	Brushed Metal Finish
FF5MH	5 Minutes	SPST	Yes	Brushed Metal Finish
FF15MC	15 Minutes	SPST	No	Brushed Metal Finish
FF15MH	15 Minutes	SPST	Yes	Brushed Metal Finish
FF30MC	30 Minutes	SPST	No	Brushed Metal Finish
FF30MH	30 Minutes	SPST	Yes	Brushed Metal Finish
FF60MC	60 Minutes	SPST	No	Brushed Metal Finish
FF60MHC	60 Minutes	SPST	Yes	Brushed Metal Finish
FF2H	2 Hours	SPST	No	Brushed Metal Finish
FF4H	4 Hours	SPST	No	Brushed Metal Finish
FF6H	6 Hours	SPST	No	Brushed Metal Finish
FF6HH	6 Hours	SPST	Yes	Brushed Metal Finish
FF12HC	12 Hours	SPST	No	Brushed Metal Finish
FF12HHC	12 Hours	SPST	Yes	Brushed Metal Finish
FF315M	15 Minutes	SPDT	No	Brushed Metal Finish
FF330M	30 Minutes	SPDT	No	Brushed Metal Finish
FF360M	60 Minutes	SPDT	No	Brushed Metal Finish
FF32H	2 Hours	SPDT	No	Brushed Metal Finish
FF32HH	2 Hours	SPDT	Yes	Brushed Metal Finish
FF34H	4 Hours	SPDT	No	Brushed Metal Finish
FF34HH	4 Hours	SPDT	Yes	Brushed Metal Finish
FF36H	6 Hours	SPDT	No	Brushed Metal Finish
FF312H	12 Hours	SPDT	No	Brushed Metal Finish
FF312HH	12 Hours	SPDT	Yes	Brushed Metal Finish
FF415M	15 Minutes	DPST	No	Brushed Metal Finish
FF430M	30 Minutes	DPST	No	Brushed Metal Finish
FF460M	60 Minutes	DPST	No	Brushed Metal Finish
FF46H	6 Hours	DPST	No	Brushed Metal Finish
FF412H	12 Hours	DPST	No	Brushed Metal Finish

Specification
The timer shall be of the appropriate dimensions and design to provide for direct replacement of a standard wall switch in a single gang 2 1/2" deep junction box. The timer shall include a spiral time scale to provide easy selection of a desired time setting. Molded white knob and brushed metal finish wall plate shall be a press-on type requiring no screw or other hardware to secure. The polymeric time dial shall replace a standard switch plate without modifications. The timer shall have a UL listed rating of:

- 1 HP at 125 VAC, 50/60 Hz
- 2 HP at 250 VAC, 50/60 Hz
- 20 Amp, 120 VAC, 50/60 Hz
- 10 Amp, 250 VAC, 50/60 Hz
- 10 Amp, 277 VAC, 50/60 Hz
- 7 Amp, 125 VAC, Tungsten

The timer field wiring connections shall be secured by means of a teeter-type terminal screw to provide secure connections for appropriate wire sizes. The timer shall be _____ (SPST)(DPST)(SPDT). The timer _____ (Shall) (Shall Not) have a Hold feature and shall have a time cycle of _____ (See Time Cycles Listed). The timer shall be Intermatic model _____ (See Model Numbers Listed).

Energy Controls www.intermatic.com

Figure 2: FF Series product specification sheet, including the FF430M model.

Attribute	Value
Model Number	FF430M
Timing Range	0 to 30 Minutes
Contact Form	DPST (Double Pole, Single Throw)
HP @ 120V	1 HP
HP @ 240V	2 HP
Load Capacity @ 125V	20A (Inductive) / 7A (Tungsten)
Load Capacity @ 250V	10A
Load Capacity @ 277V	10A
Faceplate Color	Silver / Brushed Metal Finish
Material	Metal
Product Dimensions (D x W x H)	2.3" x 2.9" x 4.5"
Item Weight	0.35 Pounds (5.6 ounces)
Mounting Type	Wall
Certifications	UL Listed (E76987), CSA Certified (Lr3730)
UPC	078275184350

INSTALLATION GUIDE

Safety First: Before beginning any installation, ensure that the power to the circuit is turned OFF at the service panel (breaker box or fuse box) to prevent electrical shock.

The FF430M timer is designed to replace a standard wall switch. It can be installed in single or multi-gang electrical boxes. The 'up front' terminal connections and 'press-on' knob design facilitate a quick and easy installation process.

Wiring Diagrams

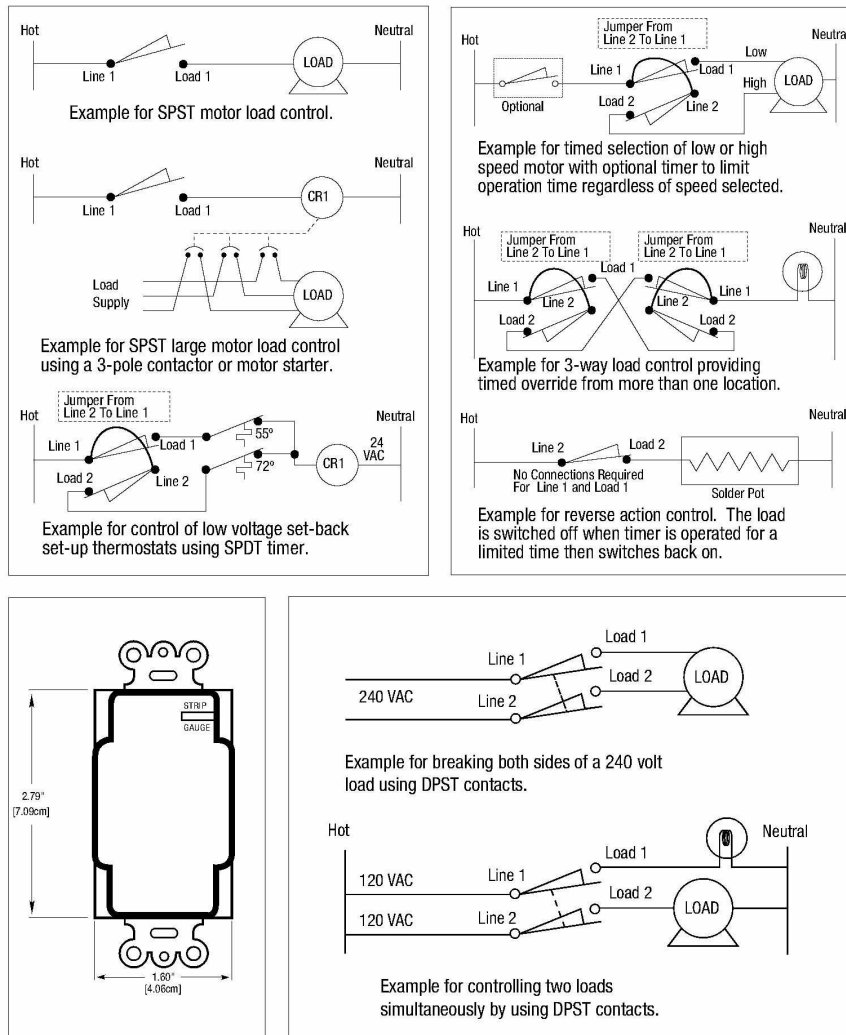
Diagrams


Figure 3: Various wiring diagrams for FF Series timers.

For the FF430M (DPST model), refer to the diagram titled "**Example for breaking both sides of a 240 volt load using DPST contacts**" or "**Example for controlling two loads simultaneously by using DPST contacts**" in Figure 3. Ensure all connections are secure using the teeter-type terminals.

1. Turn off power at the circuit breaker.
2. Remove the existing wall switch.
3. Connect the timer's wires to the circuit wires according to the appropriate DPST wiring diagram.
4. Secure the timer within the wall box.
5. Attach the time dial plate and press on the knob.
6. Restore power at the circuit breaker.

OPERATION

The Intermatic FF430M timer is simple to operate:

- To activate the timer, simply turn the knob clockwise to the desired time setting (up to 30 minutes).
- The timer will automatically count down and turn off the connected load once the set time has

elapsed.

- The timer does not have a 'hold' feature; it is designed for automatic shut-off only.

MAINTENANCE

The Intermatic FF430M timer requires minimal maintenance. Periodically, you may wipe the faceplate with a soft, damp cloth to remove dust or smudges. Do not use abrasive cleaners or solvents, as these may damage the finish.

TROUBLESHOOTING

- **Timer does not turn on/off:** Ensure the power to the circuit is on. Verify all wiring connections are secure and correct according to the installation diagrams.
- **Timer knob is stiff or difficult to turn:** This is typically not an issue with new units. If it becomes stiff over time, ensure no debris is obstructing the mechanism. Do not force the knob.
- **Timer does not complete full cycle:** Check the load capacity to ensure it does not exceed the timer's specifications. Overloading can affect performance.

If issues persist after checking these points, please contact customer support.

WARRANTY INFORMATION

The Intermatic FF430M Spring Wound Timer is covered by a **1-year limited warranty**. During this period, if the unit fails due to manufacturing defects, it will be replaced. Please retain your proof of purchase for warranty claims.

CUSTOMER SUPPORT

For technical assistance, troubleshooting beyond the scope of this manual, or warranty inquiries, please contact Intermatic customer support. Detailed contact information can typically be found on the official Intermatic website or on the product packaging.