

## Manuals+

[Q & A](#) | [Deep Search](#) | [Upload](#)

manuals.plus /

- › [Weiser](#) /
- › [Weiser Welcome Home Toluca Lever Lock Entry User Manual](#)

### Weiser 9GLA5350-071

# Weiser Welcome Home Toluca Lever Lock Entry Manual

Model: 9GLA5350-071

## INTRODUCTION

---

This manual provides detailed instructions for the installation, operation, and maintenance of your Weiser Welcome Home Toluca Lever Lock Entry. This product features the innovative SmartKey cylinder technology, offering enhanced security and convenient rekeying capabilities. Please read this manual thoroughly before beginning installation or operation to ensure proper function and longevity of your lock.

## WHAT'S IN THE BOX

---

Carefully unpack all components and verify that all items listed below are present. If any parts are missing or damaged, please contact Weiser customer support.

# WHAT'S IN THE BOX

- **Exterior Lever**
- **Interior Lever**
- **Adjustable Latch**  
With Round Front Option  
or a Drive-In Collar
- **Strike**
- **SmartKey® Tool**
- **2 Weiser® Keys**
- **Installation  
Hardware**
- **Allen Wrench**



Image: Contents of the Weiser Welcome Home Toluca Lever Lock Entry package.

- Exterior Lever
- Interior Lever
- Adjustable Latch (with Round Front Option or a Drive-In Collar)
- Strike Plate
- SmartKey® Tool
- 2 Weiser® Keys
- Installation Hardware (screws)
- Allen Wrench

## SETUP AND INSTALLATION

The Weiser Welcome Home Toluca Lever Lock is designed for easy installation and is reversible for both right-handed and left-handed doors. Ensure your door is prepared according to standard door lock specifications (adjustable backset 2-3/8" or 2-3/4").

# WEISER®

**DELIVERING  
TRUSTED SECURITY**  
and peace of mind to millions  
of families since 1904.

Image: The reversible design allows installation on both left-handed and right-handed doors.

This lever is non-handed, meaning it can be used with both right and left-hand doors without modification. The reversible design simplifies installation.

## Installation Steps

Follow these steps for a successful installation:

# DIMENSIONS

Weiser® Toluca™  
Keyed Entry Lever

## EXTERIOR LEVER



## INTERIOR LEVER

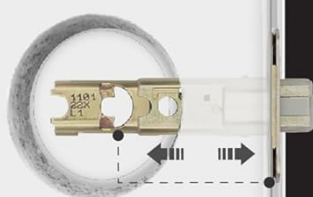


Image: Visual guide for the easy installation process.

1. **Install Latch and Exterior Lever:** Screw in the adjustable latch into the door edge. Place the exterior lever assembly onto the door, ensuring the spindle passes through the latch mechanism.
2. **Secure Mounting Plate:** Easily access mounting screw holes by removing the rosette. Secure the mounting plate to the door with the provided screws. Ensure the turn button is kept horizontal as shown in the diagram.
3. **Attach Interior Lever:** Reattach the rosette to the mounting plate. Position the interior handle onto the chassis, aligning the spindle.
4. **Final Securement:** Secure the interior handle to the chassis using the supplied Allen wrench. Install the strike plate on the door frame, aligning it with the latch.

For detailed visual instructions, refer to the "Easy Install" diagram provided.

## OPERATING INSTRUCTIONS

### SmartKey® Cylinder Technology

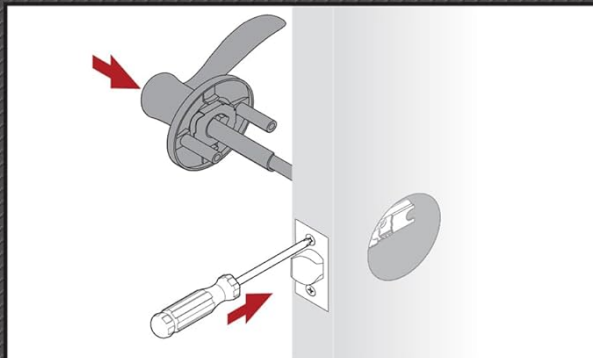
Your Weiser Toluca Lever Lock features SmartKey cylinder technology, which allows you to rekey your lock yourself



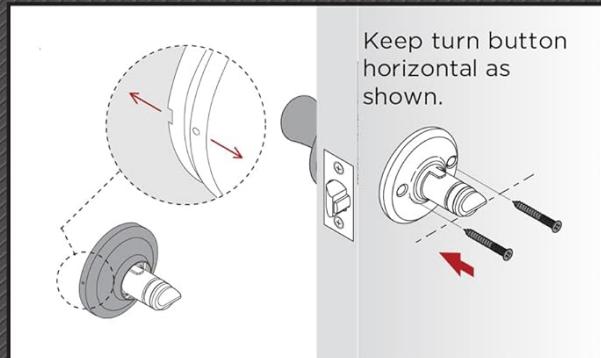
in seconds. This is particularly useful for situations such as moving to a new home, losing keys, or consolidating multiple locks to a single key.

# EASY INSTALL

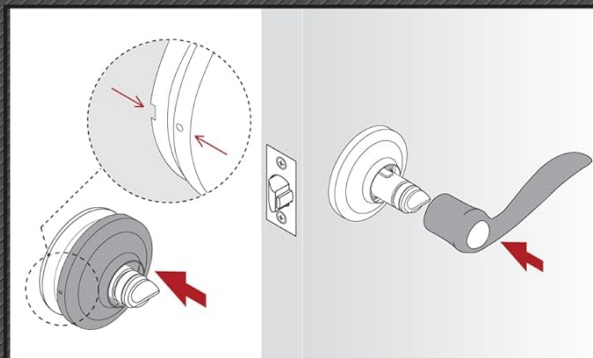
Easily access mounting  
screw holes by removing  
the rosette.



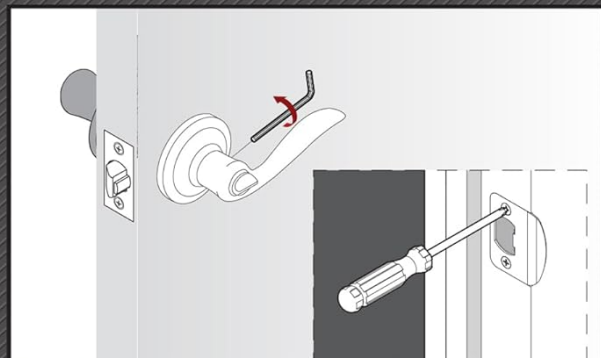
**1** *Screw in Adjustable Latch, then  
Place Exterior Lever on Door*



**2** *Remove Rosette from Mounting Plate, then  
Secure Mounting Plate to Door with Screws*



**3** *Reattach Rosette to Mounting Plate,  
then Position Interior Handle on Chassis*



**4** *Secure Interior Handle to Chassis with  
Allen Wrench, then Screw in Strike*

Image: SmartKey Security allows for easy re-keying.

## To rekey your lock:

1. Insert your functioning key fully into the cylinder.
2. Rotate the key 90 degrees clockwise.
3. Insert the SmartKey tool fully into the small hole on the cylinder face.
4. Remove the SmartKey tool and the functioning key.
5. Insert the new key you wish to use fully into the cylinder.
6. Rotate the new key 90 degrees counter-clockwise.
7. Remove the new key. Your lock is now rekeyed to the new key.

The SmartKey cylinder is designed to be bump-resistant and highly pick-resistant, providing enhanced security.

## MAINTENANCE

To ensure the long-lasting performance and appearance of your Weiser Toluca Lever Lock, follow these maintenance guidelines:

- **Cleaning:** Clean the lock with a soft, damp cloth. Avoid abrasive cleaners, solvents, or harsh chemicals, as these can damage the finish.
- **Lubrication:** Periodically apply a silicone-based lubricant to the latch mechanism and cylinder to ensure smooth operation. Do not use oil-based lubricants as they can attract dirt.
- **Inspection:** Regularly inspect all screws and connections to ensure they are tight. Loose components can affect the lock's performance and security.
- **Key Care:** Keep keys clean and free of debris. Do not force a key into the cylinder if it does not insert smoothly.

## TROUBLESHOOTING

If you encounter issues with your Weiser Toluca Lever Lock, refer to the following common problems and solutions:

Problem	Possible Cause	Solution
Key does not turn or is difficult to insert.	Debris in cylinder, worn key, or misaligned cylinder.	Clean key and cylinder. Try a spare key. If issue persists, contact customer support.
Lever is loose or wobbly.	Loose mounting screws or worn internal components.	Tighten mounting screws. If wobble persists, the premium chassis ensures long-term stability, but contact support if excessive.
Latch does not retract fully or sticks.	Misalignment with strike plate, dirt in latch mechanism, or dry lubricant.	Check strike plate alignment. Clean and lubricate the latch mechanism with silicone spray.
Cannot rekey the lock.	Incorrect rekeying procedure, wrong key, or damaged SmartKey tool.	Review the "Operating Instructions" section for the correct rekeying steps. Ensure the original working key is used first.

If you are unable to resolve an issue using the troubleshooting guide, please contact Weiser customer support for assistance.

## SPECIFICATIONS

Key technical specifications for the Weiser Welcome Home Toluca Lever Lock Entry:

# REVERSIBLE DESIGN

Fully reversible, can be installed on both right-handed and left-handed doors.



Image: Internal features and premium chassis design of the lever lock.

# DIMENSIONS

Weiser® Toluca™  
Keyed Entry Lever

## EXTERIOR LEVER



## INTERIOR LEVER

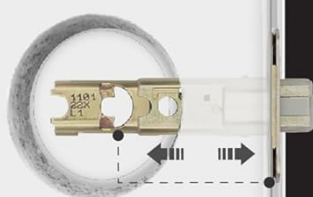


Image: Dimensional specifications for the Weiser Toluca Lever Lock.

- **Model Number:** 9GLA5350-071
- **Finish:** Satin Nickel
- **Hand Orientation:** Right (non-handed, reversible for left)
- **Lock Type:** Key Lock (Entry Function)
- **Cylinder Type:** SmartKey® Cylinder Technology
- **Backset:** Adjustable 2-3/8" or 2-3/4"
- **Door Thickness:** Fits all standard doors
- **Material:** Zinc (Handle Material)
- **Dimensions:** 4.6 x 8.88 x 3.1 inches (Product Dimensions)
- **Item Weight:** 1 Pound
- **Special Features:** Easy to Install, Bump-resistant, Higher Pick-resistant
- **Certifications:** ANSI Grade 2 BHMA Certified (Premium Chassis)

## WARRANTY AND SUPPORT



Weiser stands behind the quality of its products. For specific warranty information regarding your Weiser Welcome Home Toluca Lever Lock, please refer to the warranty card included with your purchase or visit the official Weiser website. Keep your proof of purchase for warranty claims.


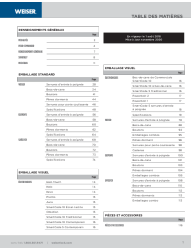


For technical support, replacement parts, or further assistance, please contact Weiser customer service. Contact information can typically be found on the product packaging or the official Weiser website.

Manufacturer: Weiser



© 2024 Weiser. All rights reserved. Information subject to change without notice.

Related Documents - 9GLA5350-071

	<p><a href="#">Weiser Powerbolt 2 Keyless Entry Door Lock Installation and User Guide</a></p> <p>Comprehensive guide for installing and using the Weiser Powerbolt 2 Matte Black Keyless Entry Door Lock/Deadbolt Lock. Includes instructions for setup, programming user codes, changing master codes, and troubleshooting.</p>
	<p><a href="#">Weiser Catalogue Complet de Quincaillerie de Porte et Serrures</a></p> <p>Explorez le catalogue Weiser pour une vaste sélection de quincaillerie de porte, serrures électroniques et mécaniques, incluant les technologies SmartKey et Microban. Trouvez spécifications, finitions et prix.</p>
	<p><a href="#">Weiser Powerbolt 2 Keyless Entry Door Lock Installation and User Guide</a></p> <p>Comprehensive guide for installing and using the Weiser Powerbolt 2 touchpad keyless entry door lock, including setup, programming, troubleshooting, and safety information.</p>
	<p><a href="#">Weiser Powerbolt 2 Electronic Deadbolt: Installation and Usage Guide</a></p> <p>Comprehensive guide for the Weiser Powerbolt 2 electronic deadbolt, covering door handing, adding user codes, and removing user codes. Features SmartKey technology.</p>

WEISER	
aura HALO HALO HALO	
Troubleshooting Guide	
■ Quick Preparation	3
■ Installation	4
■ Remote App	12
■ Bluetooth	12
■ Wi-Fi	12
■ Smart Home Setup	12
■ Remote Connectivity	12
■ Remote Compatibility	12
■ Easy Touch	12

©2024 Weiser Locks  
www.weiserlocks.com

[Weiser Halo & Aura Smart Lock Troubleshooting Guide](#)

Comprehensive troubleshooting guide for Weiser Halo and Aura smart locks, covering installation, app usage, connectivity issues, and common problems. Find solutions for door preparation, Bluetooth, Wi-Fi, and smart home integration.

WEISER	
ELEMENTS	
WEISER	
Installation and User Guide	
■ Installation	1
■ Operation	2
■ Troubleshooting	3
■ Remote App	4
■ Bluetooth	5
■ Wi-Fi	6
■ Smart Home Setup	7
■ Remote Connectivity	8
■ Remote Compatibility	9
■ Easy Touch	10

©2024 Weiser Locks  
www.weiserlocks.com

[Weiser Elements Installation and User Guide](#)

Comprehensive installation and user guide for the Weiser Elements electronic door lock, detailing setup, operation, and troubleshooting.