

Ribimex 01651

Ribimex Extended Anvil Branch Cutter - Instruction Manual

Model: 01651

1. PRODUCT OVERVIEW

The Ribimex Extended Anvil Branch Cutter, model 01651, is a robust and efficient gardening tool designed for pruning branches up to 38mm in diameter. Its extended handles and specialized cutting mechanism provide significant leverage, making it ideal for maintaining trees, shrubs, and other woody plants with reduced effort.

2. PRODUCT FEATURES

- **Extended Length:** Approximately 75cm long handles provide excellent reach and leverage.
- **High Cutting Capacity:** Capable of cutting branches up to 38mm (1.5 inches) in diameter.
- **Gear Demultiplier System:** Features a rack and gear system that multiplies force, reducing the effort required for cutting.
- **Durable Blades:** Equipped with rust-treated 45 hardened carbon steel blades for long-lasting sharpness and performance.
- **Ergonomic Handles:** Epoxy-painted steel handles with ergonomic, non-slip bi-material grips ensure comfortable and secure handling.



Figure 2.1: Full view of the Ribimex Extended Anvil Branch Cutter, showcasing its long handles and cutting head.



Figure 2.2: Close-up view highlighting the 38mm maximum cutting capacity and the comfortable soft-touch ergonomic grips.

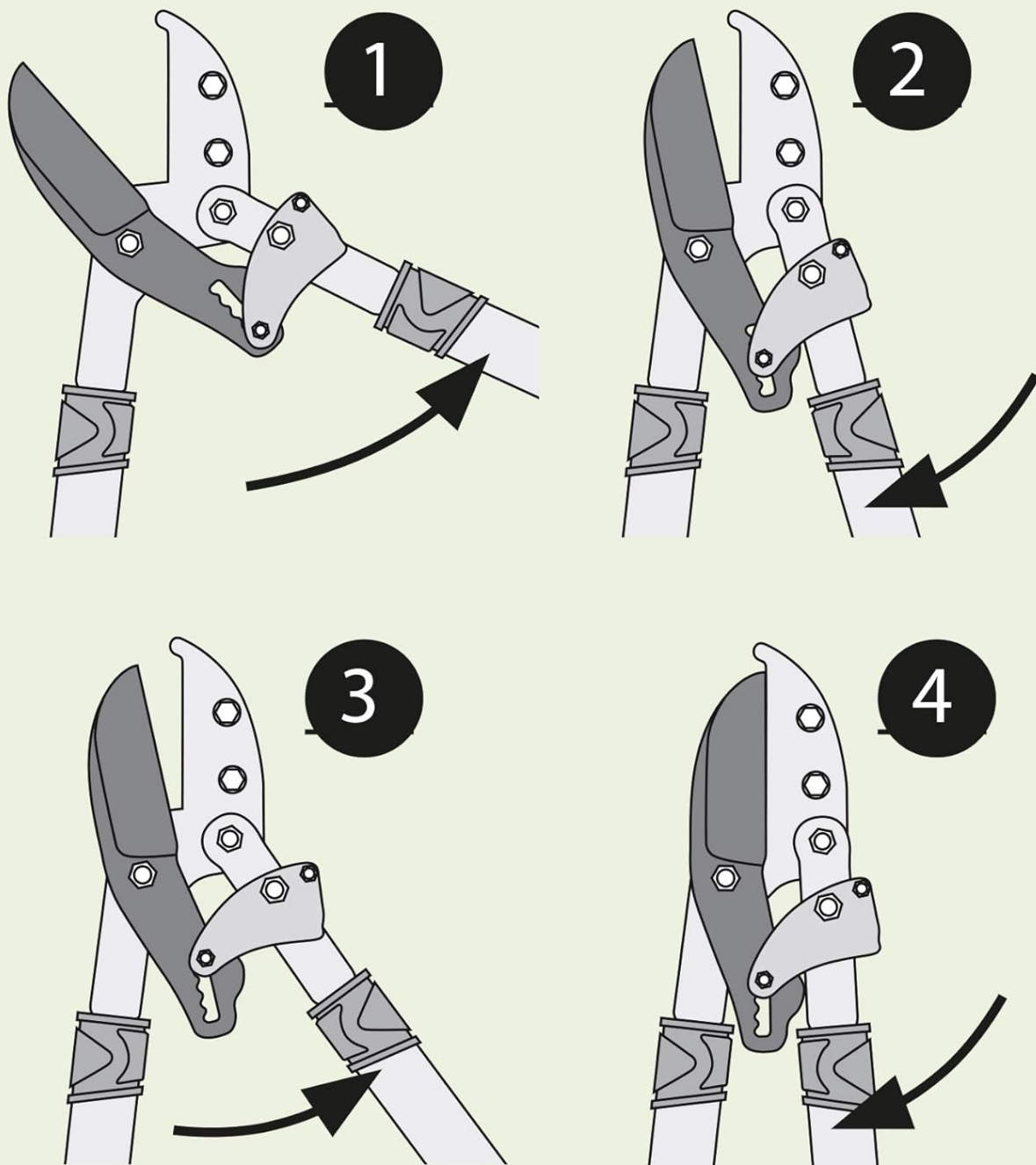


Figure 2.3: Illustrated sequence demonstrating the cutting action of the anvil branch cutter, from open to closed.

3. SAFETY INSTRUCTIONS

- Always wear appropriate personal protective equipment (PPE), including safety glasses and sturdy gloves, when operating the branch cutter.
- Keep hands and other body parts clear of the blades during operation.
- Ensure stable footing and balance before making a cut.
- Do not attempt to cut branches exceeding the maximum stated capacity of 38mm.
- Never use the tool for purposes other than its intended use (pruning branches).
- Keep the tool out of reach of children and pets.
- Store the branch cutter with blades closed and secured, if applicable, in a dry, safe place.

4. SETUP

The Ribimex Extended Anvil Branch Cutter comes pre-assembled and ready for immediate use. Upon unpacking, inspect the tool for any signs of damage during transit. Ensure the blades are clean and move freely. No additional assembly is required.

5. OPERATING INSTRUCTIONS

- 1. Identify the Cut:** Select the branch you wish to prune. Ensure it is within the tool's 38mm cutting capacity.
- 2. Position the Blades:** Open the handles wide enough to encompass the branch. Position the anvil (flat) blade against the main stem or the part of the branch you wish to keep, and the sharp cutting blade on the side of the part to be removed. This ensures a clean cut and minimizes damage to the remaining plant.
- 3. Apply Pressure:** With a firm grip on both handles, bring them together in a smooth, continuous motion. The gear demultiplier system will assist in applying the necessary force with less effort.
- 4. Complete the Cut:** Continue closing the handles until the branch is completely severed.
- 5. Clear Debris:** After each cut, ensure the blades are clear of any sap or wood debris before making the next cut.

6. MAINTENANCE

- **Cleaning:** After each use, especially when cutting resinous wood, clean the blades thoroughly with a damp cloth to remove sap and debris. Dry the blades completely to prevent rust.
- **Lubrication:** Periodically apply a light machine oil or silicone spray to the pivot points and the surface of the blades. This ensures smooth operation and protects against corrosion.
- **Sharpening:** Over time, the blades may become dull. Sharpening should be done by a professional or with appropriate sharpening tools designed for pruning shears. Always sharpen only the beveled edge of the cutting blade.
- **Storage:** Store the branch cutter in a dry, cool place, away from direct sunlight and moisture. Ensure the blades are closed and secured to prevent accidental injury.

7. TROUBLESHOOTING

- **Difficulty Cutting / Blades Sticking:**
 - Check for sap or debris buildup on the blades. Clean and lubricate as per maintenance instructions.
 - Ensure the branch being cut is not exceeding the maximum capacity.
 - Blades may be dull and require sharpening.
- **Handles Feel Loose:**
 - Inspect all bolts and fasteners. Tighten any loose components, being careful not to overtighten.

8. SPECIFICATIONS

Attribute	Value
Model Number	01651
Manufacturer	Ribiland

Product Dimensions	80 x 3 x 31 cm
Item Weight	0.8 Kilograms
Cutting Capacity	38 Millimetres (max)
Blade Material	Alloy Steel (45 hardened carbon steel)
Handle Material	Bi-material (Epoxy-painted steel with non-slip grips)
Blade Edge	Chisel

9. WARRANTY AND SUPPORT

This product is covered by a 2-year EU Spare Part Availability Duration. For warranty claims, spare parts, or technical support, please contact your original retailer or the manufacturer, Ribiland, directly. Please have your model number (01651) and proof of purchase available when contacting support.

For further assistance, please visit the official Ribimex website or consult your local authorized dealer.