

ICY DOCK MB882SP-1S-2B

ICY DOCK EZConvert Lite MB882SP-1S-2B Instruction Manual

2.5" to 3.5" SATA HDD & SSD Mounting Kit

1. INTRODUCTION

The ICY DOCK EZConvert Lite MB882SP-1S-2B is designed to convert any 2.5-inch SATA HDD or SSD into a standard 3.5-inch SATA hard drive form factor. This allows for seamless integration into 3.5-inch SATA drive bays, hot-swap devices, and backplanes, providing flexibility for system builders and upgrades.

2. PRODUCT OVERVIEW

The EZConvert Lite MB882SP-1S-2B features a robust design for secure drive mounting and efficient heat dissipation. It supports high-speed data transfer and offers broad compatibility with various systems.

- Converts 2.5" SATA HDD/SSD to 3.5" SATA form factor.
- Supports SATA 6Gbps or SAS 3.0 12Gbps (single channel).
- Compatible with most 3.5" HDD backplanes and hot-swap devices.
- Universal mounting holes for standard PC cases.
- Screw-less design for quick and easy installation.
- Airflow vents for effective heat dissipation.
- Shockproof design for drive protection.
- Simple and lightweight construction.
- Compatible with first-generation Mac Pro & iMac.

Tool-Less Drive Installation



The converter is designed to be compatible with 5mm-12.5mm height 2.5" HDD/SSD. Simply insert the drive, connect it to the device's connector and slide the lid to seal the converter. For 2.5" drives that are 5mm to 7mm in height (e.g. Samsung 840 SSD), the tool-less drive load may not work properly. Performing a manual install into the device is an alternative method to provide better compatibility.

Image: Product view highlighting ventilation slots and SATA 6Gbps support.

Packed with Features



MB882SP-1S-2B comes with features to aid cooling and to protect your drive from vibration damage. A drive stabilizer is included to stabilize the drive when installed. It will adjust itself to multiple 2.5" HDD/SSD drive heights. Multiple airflow vents located on the front and rear to route air flow effectively for excellent passive cooling.

Image: Underside view of the converter, illustrating universal mounting holes for compatibility with 3.5" drive bays.

Packed with Features



The converter can fit into most common PC cases, 3.5" HDD duplicator, 3.5" SATA HDD enclosure, mobile rack, backplane modules and servers without having to purchase any attachments for the 2.5" drives. This state-of-the-art case will revolutionize the way 2.5" drives are presently used

Image: Diagram illustrating support for various 2.5" drive heights (7mm to 12.5mm) and the anti-vibration design.

3. PACKAGE CONTENTS

Please verify that all items are present in your package:

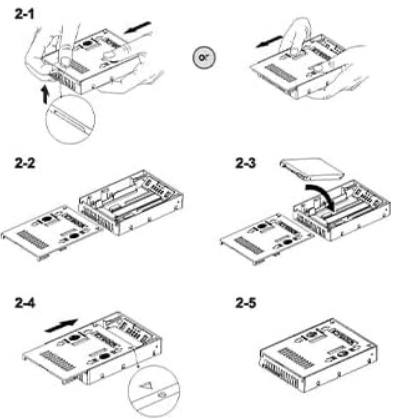
- ICY DOCK EZConvert Lite MB882SP-1S-2B Converter
- User Manual
- Mounting Screws



1 Package Content • Verpackungsbeschreibung • パッケージの説明
• 包装説明 • 包装説明:



2 Instructions • Gebrauchsanweisung • 操作の説明 • 操作説明 • 操作説明:



Package Content

Device / User Manual / Screws

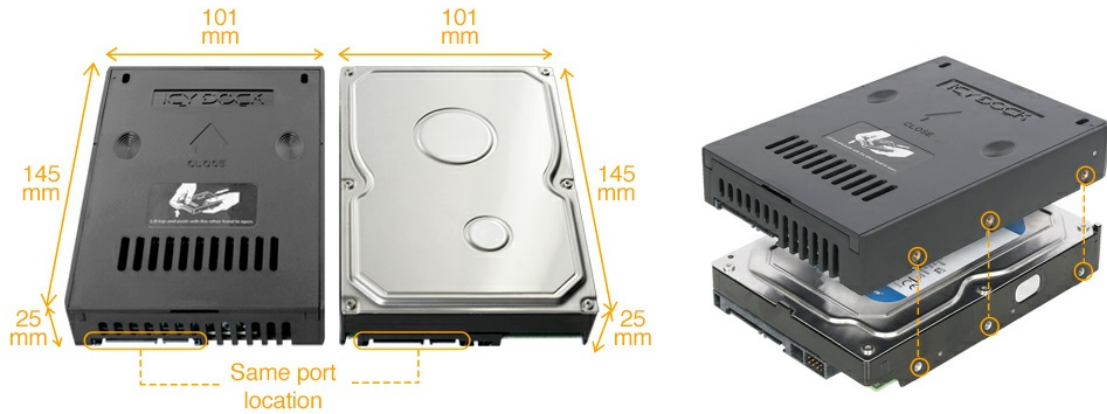
Image: Contents of the product package, including the converter, user manual, and mounting screws.

4. SETUP AND INSTALLATION

Follow these steps to install your 2.5" SATA HDD or SSD into the EZConvert Lite MB882SP-1S-2B converter:

1. **Insert 2.5" Drive:** Open the converter cover and carefully slide your 2.5" SATA HDD or SSD into the bay. Ensure the SATA connectors align.
2. **Close the Lid:** Once the drive is seated, close the top lid of the converter.
3. **Secure the Drive:** Push the lid forward to lock it and secure the drive within the converter. The screw-less design ensures a firm fit.
4. **Mount the Converter:** Install the assembled converter into any standard 3.5" drive bay in your PC case or compatible hot-swap device.

Identical 3.5" HDD Dimensions



The MB882SP-1S-2B converter is designed using the dimensions, connection locations, and mounting hole positions of a standard 3.5" SATA drive. This converter can be used in any internal hard drive bay, as well as backplane and hotswap modules.

Image: Visual guide for the three-step, tool-less drive installation process.

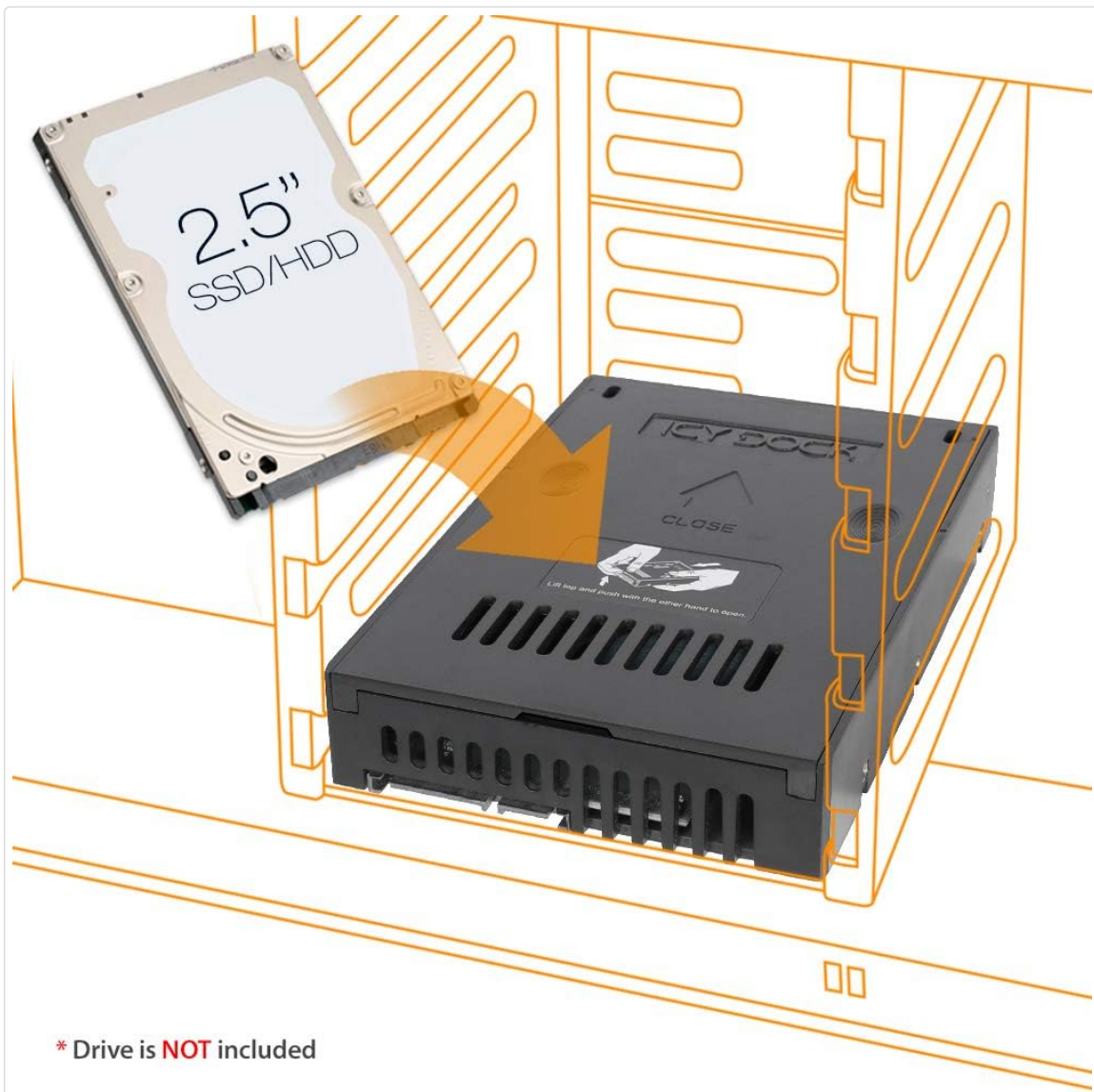


Image: The assembled converter being slid into a 3.5" drive bay, demonstrating its compatibility.

4.1 Manual Installation for 7mm Height Drives

This unit is primarily designed for 9.5mm height SSDs and hard drives. However, it supports 7mm height SSDs and drives, which may require manual installation to ensure proper connection. Refer to the video below for detailed instructions on manually installing 7mm height drives.

Your browser does not support the video tag.

Video: Instructional guide on how to manually install 7mm height SSDs or hard drives into the ICY DOCK MB882SP series converter.

5. OPERATING INSTRUCTIONS

Once your 2.5" drive is securely installed within the EZConvert Lite MB882SP-1S-2B and the converter is mounted in a 3.5" drive bay, it functions as a standard 3.5" SATA drive. No additional software or drivers are required for operation. The system will recognize the installed 2.5" drive as if it were a native 3.5" drive.

- Ensure proper power and data connections are made to the 3.5" SATA interface of the converter.
- For new drives, initialize and format the drive through your operating system's disk management tools.
- For existing drives, ensure your operating system is configured to recognize and mount the drive.

6. MAINTENANCE

The EZConvert Lite MB882SP-1S-2B is designed for minimal maintenance. To ensure optimal performance and longevity:

- Keep the converter and its ventilation slots free from dust and debris. Use compressed air for cleaning if necessary.
- Avoid exposing the unit to extreme temperatures or humidity.
- Do not attempt to disassemble the unit beyond removing the cover for drive installation, as this may void the warranty.

7. TROUBLESHOOTING

- **Drive not detected:**
 - Ensure the 2.5" drive is fully seated and connected to the internal SATA connector of the converter.
 - Verify that the converter itself is properly connected to the 3.5" SATA data and power

cables in your system.

- Check your system's BIOS/UEFI settings to ensure the SATA port is enabled.
- Test the 2.5" drive directly or with another adapter to rule out drive failure.

- **Slow performance:**

- Ensure your system's SATA controller and cables support SATA 6Gbps for optimal speed.
- Check the health of your 2.5" SSD/HDD.

- **Converter does not fit in 3.5" bay:**

- Verify that your drive bay is a standard 3.5" size.
- Ensure no obstructions are preventing proper insertion.

8. SPECIFICATIONS

Feature	Detail
Model Number	MB882SP-1S-2B
Hardware Interface	SATA 6.0 Gb/s
Compatible Drive Type	2.5" SATA HDD/SSD
Output Form Factor	3.5" SATA Drive Bay
Data Transfer Rate	Up to 6 Gigabits Per Second (SATA) / 12 Gigabits Per Second (SAS 3.0, single channel)
Supported Devices Quantity	1
Item Weight	119 Grams
Hardware Platform	Mac, PC
Color	Classic Black

9. WARRANTY AND SUPPORT

The ICY DOCK EZConvert Lite MB882SP-1S-2B comes with a **3-year warranty** from the date of purchase. For technical support, warranty claims, or any questions regarding your product, please contact ICY DOCK customer service.

Contact Information:

- Email: tech@icydock.com

- Visit the official ICY DOCK website for additional resources and support.

Please retain your proof of purchase for warranty purposes.