

Malco LN-408440

Malco Linit Starch Crisp Classic Finish (64 Oz.) Instruction Manual

1. INTRODUCTION

This manual provides comprehensive instructions for the proper use and care of Malco Linit Starch Crisp Classic Finish (64 Oz.). Linit Starch is a concentrated liquid designed to impart a crisp finish to fabrics during ironing and serves as a versatile ingredient for various arts and crafts projects. Please read this manual thoroughly before use to ensure optimal results and safety.

2. SAFETY INFORMATION

Observe the following safety guidelines when handling Linit Starch:

- Keep out of reach of children and pets.
- Avoid contact with eyes. In case of contact, rinse immediately with plenty of water.
- Do not ingest. If swallowed, seek medical attention immediately.
- Use in a well-ventilated area.
- Store in a cool, dry place, away from direct sunlight and extreme temperatures.
- Ensure the cap is tightly closed after each use.

3. PRODUCT OVERVIEW

Malco Linit Starch Crisp Classic Finish is a concentrated liquid starch formulated to provide a crisp, clean finish to garments and enhance various craft projects. It is free from dyes and bleach, making it suitable for a wide range of applications.





GREAT
FOR ARTS &
CRAFTS AND
KIDS MAKING
SLIME

NEW LOOK
SAME GREAT FORMULA!

Lin-it[®]
Starch

CONCENTRATED LIQUID

For Easier Ironing

CONTAINS NO DYES, NO BLEACH

THIS BOTTLE

=

7 AEROSOL CANS

Image 3.1: Front view of the Malco Linit Starch 64 oz bottle, highlighting its 'Crisp Classic Finish' and 'For Easier Ironing' claims.

Key Features:

- Provides a clean, crisp appearance to fabrics.
- Makes ironing faster and easier by reducing friction.
- Aids in stain resistance for treated fabrics.
- Versatile dilution for various applications, including ironing and crafts.
- Contains no dyes or bleach.

How to Use:

 1 Shake well before using.	 2 Dilute concentrate with water per desired application method.
 3 Apply mixed product per preferred application method.	 4 Iron while the fabric is damp.

Image 3.2: Visual representation of Linit Starch benefits, including adding body and crispness to fabric, making ironing easier, aiding stain resistance, and offering variable dilution.



Image 3.3: Illustration of Linit Starch's versatility, suitable for garment soaking, use in the washer, or as a spray, emphasizing its safe, non-bleach, dye-free, and filler-free formula.

4. SETUP AND PREPARATION

Before using Linit Starch, proper preparation ensures the best results.

4.1. Shake Well

Always shake the bottle thoroughly before each use to ensure the concentrated liquid is evenly mixed.



Image 4.1: Step-by-step application guide, starting with shaking the bottle, diluting the concentrate, applying the mixture, and ironing the damp fabric.

4.2. Dilution Instructions

Linit Starch is concentrated and must be diluted with water according to your desired stiffness and application method. Refer to the dilution chart on the product label for specific ratios.

APPLICATION

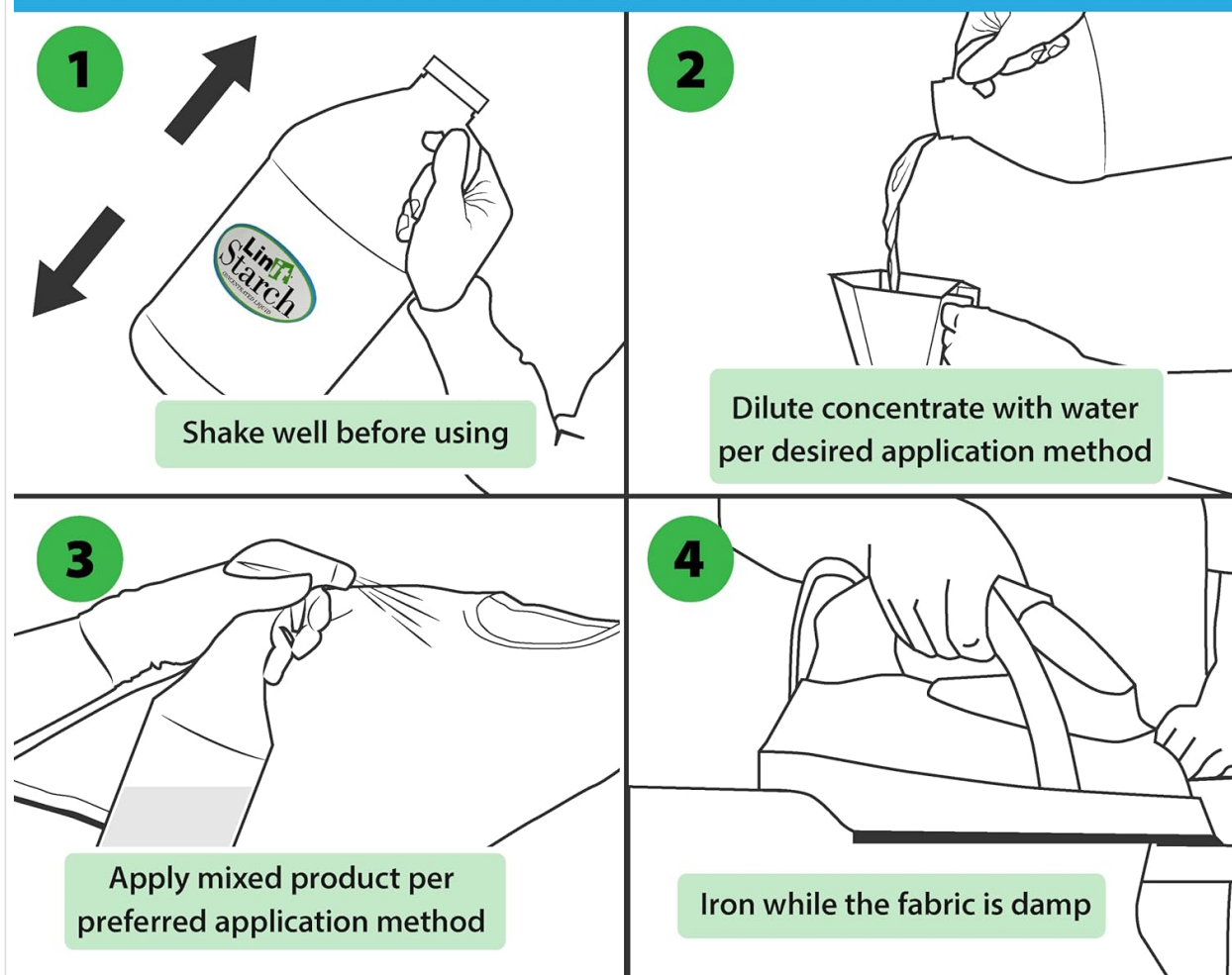


Image 4.2: Back label of the Linit Starch bottle, detailing dilution ratios for various applications, including spray starch (light, medium, heavy finish) and arts & crafts.

General Dilution Guidelines (Refer to bottle for precise measurements):

Desired Finish	Linit Starch (Fl. Oz.)	Water (Fl. Oz.)
Light	2	14
Medium	3	13
Heavy	4	12
Extra Heavy (Full Strength)	7	9

For arts and crafts, dilution may vary based on the project. Start with a 1:1 ratio and adjust as needed.

5. OPERATING INSTRUCTIONS

5.1. For Ironing Clothes

1. **Prepare Solution:** Dilute Linit Starch with water according to the desired stiffness (refer to Section 4.2).
2. **Apply to Fabric:**
 - **Spray Method:** Pour the diluted solution into a clean spray bottle. Lightly mist the garment evenly until damp.
 - **Soak Method:** For a very crisp finish, immerse the garment in the diluted starch solution. Wring out excess liquid until the garment is damp.
3. **Iron:** Iron the garment while it is still damp. Use the appropriate iron temperature for the fabric type. The starch will help remove wrinkles and create a smooth, crisp finish.
4. **Drying:** Allow the garment to dry completely after ironing.

5.2. For Arts & Crafts Projects

Linit Starch is an excellent ingredient for various craft activities, including:

- **Slime:** Combine Linit Starch with white school glue and water in specific ratios to create homemade slime.
- **Paper Mache:** Use as a binding agent for paper mache projects.
- **Fabric Stiffening:** Stiffen fabric for various decorative purposes.

Always test a small amount for specific craft recipes and adjust dilution as needed. Ensure adult supervision for children's craft activities.



Image 5.1: An adult pouring Linit Starch into a bowl where a child is mixing green slime, demonstrating its use in arts and crafts.

6. MAINTENANCE

6.1. Storage

Store the Linit Starch bottle upright in a cool, dry place. Avoid freezing or prolonged exposure to high temperatures. Keep the cap tightly sealed to prevent evaporation and contamination.

6.2. Cleaning

Rinse any spray bottles or containers used for diluted starch with clean water after each use to prevent clogging or residue buildup.

7. TROUBLESHOOTING

If you encounter issues while using Linit Starch, consider the following:

- **Uneven Stiffness:** Ensure the starch solution is evenly applied to the fabric. For spray application, mist thoroughly. For soaking, ensure the garment is fully saturated.
- **White Residue on Fabric:** This can occur if too much starch is used, or if the starch is not fully diluted. Try using a lighter dilution ratio or ensuring the starch is completely mixed with water. Ironing at too low a temperature can also contribute; ensure the iron is hot enough for the fabric.
- **Spray Bottle Clogging:** Rinse the spray nozzle and tube with warm water after each use to prevent

starch residue from drying and clogging.

8. SPECIFICATIONS

Specification	Detail
Product Name	Linit Starch Crisp Classic Finish
Brand	Malco
Model Number	LN-408440
Volume	64 Fluid Ounces
UPC	885600876572, 041375408442
GTIN	885600876572, 041375408442
ASIN	B002UTOK46
Product Dimensions	1 x 1 x 1 inches; 1 Pounds (Note: Dimensions may refer to packaging or shipping weight)
Manufacturer	Beauty Exchange LLC -- Dropship

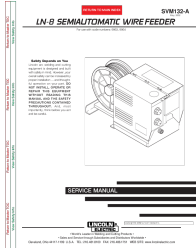



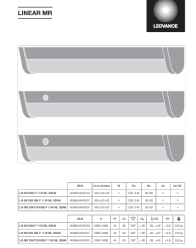
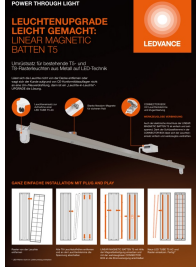
9. WARRANTY INFORMATION

Specific warranty details for Malco Linit Starch Crisp Classic Finish (64 Oz.) are not provided in the available product information. For any warranty-related inquiries, please refer to the manufacturer's official website or contact their customer service directly.

10. SUPPORT INFORMATION

No direct customer support contact information is provided within the product details. For assistance or further questions regarding Malco Linit Starch, please visit the official Malco Products, Inc. website or refer to the contact information typically found on the product packaging.

Related Documents - LN-408440

	<p>Lincoln Electric LN-B Semiautomatic Wire Feeder Service Manual</p> <p>Comprehensive service manual for the Lincoln Electric LN-B Semiautomatic Wire Feeder, covering installation, operation, maintenance, and troubleshooting. Includes safety precautions and technical specifications.</p>
	<p>Samsung LN-T Series TFT-LCD Television Owner's Manual</p> <p>This owner's manual provides detailed instructions for setting up, operating, and troubleshooting Samsung LN-T series TFT-LCD televisions, including models LN-T2342H, LN-T2642H, LN-T3242H, LN-T4042H, and LN-T4642H.</p>
	<p>Samsung TFT-LCD TV Owner's Instructions: LN-T2353H, LN-T2354H, LN-T2653H, LN-T3253H, LN-T4053H</p> <p>This owner's instructions manual provides comprehensive guidance for setting up, operating, and troubleshooting Samsung TFT-LCD televisions, including models LN-T2353H, LN-T2354H, LN-T2653H, LN-T3253H, and LN-T4053H.</p>
	<p>EBL Universal LCD Battery Charger User Manual</p> <p>User manual for the EBL Universal LCD Display Battery Charger with Discharge Function, compatible with AA, AAA, C, and D Ni-MH/Ni-CD rechargeable batteries.</p>
	<p>LEDVANCE LINEAR MR Series: Luminaires - Specifications & Installation Guide</p> <p>Detailed product specifications, technical data, and step-by-step installation instructions for the LEDVANCE LINEAR MR series of linear luminaires, including models like LN MR 600, LN SEN 600, and LN SWITCH 600.</p>
	<p>LEDVANCE LINEAR MAGNETIC BATTEN T5: Einfaches LED-Upgrade für T5/T8 Leuchten</p> <p>Erfahren Sie, wie Sie bestehende T5- und T8-Metallrasterleuchten einfach und werkzeuglos auf energieeffiziente LED-Technik umrüsten mit dem LEDVANCE LINEAR MAGNETIC BATTEN T5 Upgrade-Kit. Inklusive Produktmerkmale, Vorteile und Installationsanleitung.</p>