



Manuals.plus /

› Pyle /

› Pyle PHSP5 Indoor/Outdoor PA Horn Speaker Instruction Manual

Pyle PHSP5

Pyle Indoor/Outdoor PA Horn Speaker - Model PHSP5 Instruction Manual

Model: **PHSP5** | Brand: **Pyle**

1. INTRODUCTION

This manual provides instructions for the proper installation, operation, and maintenance of your Pyle PHSP5 Indoor/Outdoor PA Horn Speaker. This speaker is designed to deliver clear and loud audio for various indoor and outdoor public address applications.

2. KEY FEATURES

- **High Output Sound:** Delivers clear and loud audio with 101dB output.
- **Wide Frequency Response:** Capable of amplifying sound within the 500 Hz - 5 KHz range.
- **Power Rating:** Features a 65-watt peak power rating for effective sound projection.
- **Optimal Impedance:** Designed with 8 ohms impedance for compatibility with standard PA systems.
- **Adjustable Mounting:** Equipped with a 180-degree swiveling adjustable bracket for flexible positioning.
- **Durable Construction:** Built for both indoor and outdoor use.

3. PACKAGE CONTENTS

Verify that all items are present in the package:

- Pyle PHSP5 Horn Speaker
- Mounting Bracket
- Mounting Hardware



WHAT'S IN THE BOX :

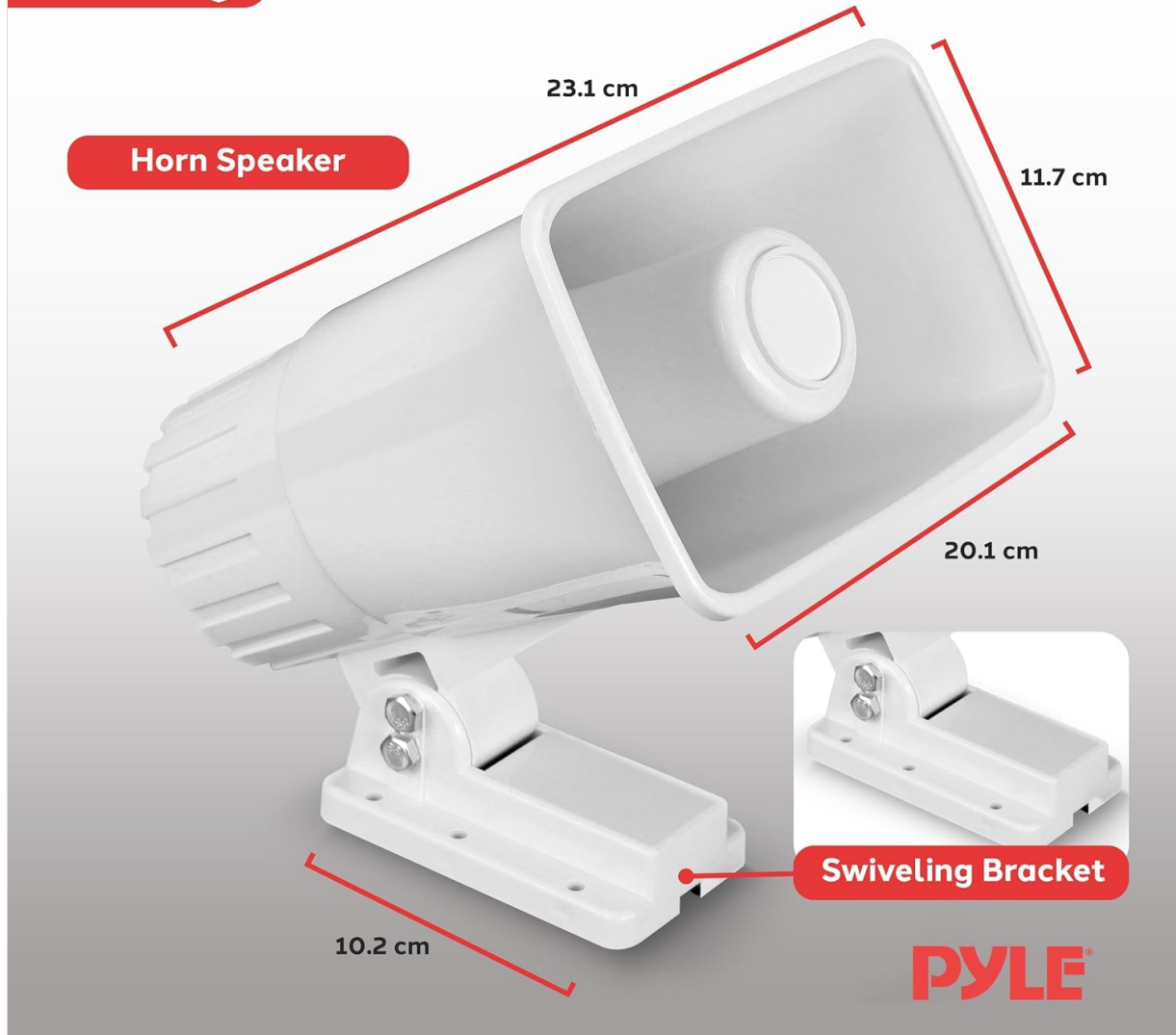


Image: Pyle PHSP5 Horn Speaker and Swiveling Bracket. This image shows the main speaker unit along with its included swiveling mounting bracket.

4. SETUP AND INSTALLATION

Follow these steps for proper installation:

1. **Choose a Location:** Select a suitable indoor or outdoor location for mounting. Consider the desired sound projection area and ensure the surface can support the speaker's weight (approximately 2.05 lbs / 0.93 kg).
2. **Mounting the Bracket:** Use the provided mounting bracket and hardware to securely attach the speaker to a wall or other stable surface. The bracket allows for 180-degree swiveling to direct sound.
3. **Speaker Attachment:** Secure the horn speaker to the mounted bracket.
4. **Wiring:** Connect the speaker to your amplifier or PA system. Ensure correct polarity (+ to + and - to -) to prevent phase issues and optimize sound quality. The speaker has an 8-ohm impedance.



INSTALLATION

Easy Setup, Seamless Sound!



Image: Pyle PHSP5 Horn Speaker Installation. This image illustrates the mounting bracket being secured to a surface with screws, ready for the speaker to be attached.



EASY MANEUVERABILITY

Adjustable, Maneuverable, Unbeatable!



90° Swiveling
Bracket

PYLE[®]

Image: Pyle PHSP5 Horn Speaker Adjustable Bracket. This image demonstrates the 180-degree swiveling capability of the speaker's mounting bracket, allowing for flexible sound direction.

5. OPERATING INSTRUCTIONS

Once installed and connected, operate the speaker as follows:

1. **Power On:** Turn on your amplifier or PA system.
2. **Volume Adjustment:** Gradually increase the volume on your amplifier to the desired level. Avoid setting the volume too high, which can cause distortion or damage to the speaker.
3. **Sound Source:** Play your audio source (e.g., microphone, music player) through the connected amplifier.
4. **Power Matching:** Ensure that the amplifier's output power matches the speaker's power handling capabilities (65 watts peak). Using an amplifier with significantly higher power can damage the speaker.

65W POWER OUTPUT

**Crystal Clear Audio,
Indoors or Outdoors!**



**Impedance:
8 Ohms**



**Frequency Range:
500 Hz - 5 KHz**

Image: Pyle PHSP5 Horn Speaker in use. This image shows the speaker mounted on an outdoor wall, indicating its suitability for both indoor and outdoor applications.

6. MAINTENANCE

To ensure longevity and optimal performance of your Pyle PHSP5 speaker:

- **Cleaning:** Wipe the speaker's exterior with a soft, damp cloth. Avoid using harsh chemicals or abrasive cleaners.
- **Environmental Protection:** While designed for outdoor use, prolonged exposure to extreme weather conditions (heavy rain, snow, direct sunlight) may affect its lifespan. Consider protective measures if installed in harsh environments.
- **Connection Check:** Periodically inspect all wiring connections for tightness and corrosion, especially in outdoor installations.



Image: Pyle PHSP5 Horn Speaker Weatherproof Design. This image highlights the speaker's ability to withstand various weather conditions, suitable for year-round outdoor installation.

7. TROUBLESHOOTING

If you encounter issues with your speaker, refer to the following common problems and solutions:

- **No Sound:**

- Ensure the amplifier is powered on and functioning correctly.
- Check all cable connections between the speaker and the amplifier for secure fit and correct polarity.
- Verify the audio source is active and producing sound.
- Confirm the amplifier's volume is not set to minimum or muted.

- **Distorted Sound:**

- Reduce the volume level on your amplifier. Overdriving the speaker can cause distortion.
- Check for proper power matching between the amplifier and speaker. An amplifier that is too powerful or underpowered can lead to distortion or damage.
- Inspect speaker wires for damage or short circuits.

- **Intermittent Sound:**

- Check for loose connections at both the speaker and amplifier terminals.
- Examine speaker cables for any breaks or damage.

8. SPECIFICATIONS

Specification	Value
Model Number	PHSP5
Brand	Pyle
Power Rating	65 Watts Peak
Impedance	8 Ohms
Noise Level (Output)	101 Decibels
Frequency Response	500 Hz - 5 KHz
Mounting Type	Wall Mount (with 180° Swiveling Bracket)
Product Dimensions (H x W x D)	8" x 4.5" x 9" (9.45 x 5.73 x 8.32 inches)
Item Weight	2.05 lbs (0.93 Kilograms)
Power Source	Corded Electric
Compatible Devices	Standard Audio Amplifiers, PA Systems
UPC	068888898331

9. SAFETY INFORMATION

WARNING: This product contains chemicals known to the State of California to cause cancer and birth defects or other reproductive harm.

Always follow general safety precautions when installing and operating audio equipment. Ensure proper electrical connections and avoid exposing the product to conditions beyond its intended use.

10. WARRANTY AND SUPPORT

For warranty information and customer support, please refer to the official Pyle website or contact their customer service department. Keep your purchase receipt for any warranty claims.