

Manuals+

[Q & A](#) | [Deep Search](#) | [Upload](#)

[manuals.plus](#) /

- › [Moen](#) /
- › [Moen 118305 Kitchen Faucet Installation Tool User Manual](#)

Moen 118305

Moen 118305 Kitchen Faucet Installation Tool User Manual

Model: 118305

INTRODUCTION

This manual provides instructions for the proper use and maintenance of the Moen 118305 Replacement Kitchen Faucet Installation Tool. This specialized tool is designed to assist in tightening or loosening the mounting hardware of Moen kitchen faucets, particularly in confined spaces under the sink.



Figure 1: The Moen 118305 Kitchen Faucet Installation Tool. This image displays the gray plastic tool with a textured grip and hexagonal openings at both ends, designed for accessing faucet mounting nuts.

SETUP AND PREPARATION

1. **Identify the Faucet Mounting Hardware:** Locate the nuts or fasteners that secure your Moen kitchen faucet to the sink or countertop from underneath.
2. **Clear the Workspace:** Ensure the area under the sink is clear of obstructions to allow access to the mounting hardware.
3. **Select the Correct End:** The Moen 118305 tool features different sized hexagonal openings at each end. Determine which end fits your specific faucet's mounting nut.

OPERATING INSTRUCTIONS

Follow these steps to effectively use the Moen 118305 tool:

1. **Position the Tool:** Carefully slide the appropriate end of the tool over the faucet's threaded shaft and onto the mounting nut. The elongated design of the tool is intended to reach nuts in tight spaces.
2. **Apply Torque:** Rotate the tool to tighten or loosen the nut. For additional leverage, a small rod or screwdriver can be inserted through the cross-hole located at the opposite end of the tool (see Figure 2).
3. **Tighten Securely:** Turn the tool clockwise to tighten the nut until the faucet is stable. Avoid excessive force, as the tool is made of plastic.



Figure 2: The Moen 118305 tool held by hands, illustrating its approximate length (8.3 inches or 21 cm). This image also highlights the cross-hole at one end, which can be used to insert a rod for increased leverage during operation.

MAINTENANCE

- **Cleaning:** Wipe the tool with a damp cloth after use to remove any dirt or debris. Do not use harsh chemicals.

- **Storage:** Store the tool in a dry place, away from direct sunlight and extreme temperatures, to preserve its material integrity.

TROUBLESHOOTING

- **Tool Does Not Fit:** Ensure you are using the correct end of the tool for your specific Moen faucet model. If the nut size differs, this tool may not be compatible.
- **Tool Breaks During Use:** The tool is constructed from plastic. Avoid applying excessive force or over-torquing, especially when dealing with seized or extremely tight nuts. If the tool breaks, a replacement may be necessary.

SPECIFICATIONS

Brand	Moen
Model Number	118305
Material	Plastic
Item Weight	1.06 ounces
Product Dimensions	1.25 x 1.1 x 7.75 inches
Recommended Uses	Kitchen Faucet Installation/Maintenance

WARRANTY AND SUPPORT

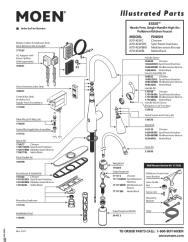
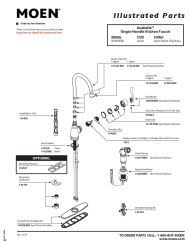
The Moen 118305 Replacement Kitchen Faucet Installation Tool is backed by Moen's One Year Limited Warranty. For warranty claims, technical assistance, or to inquire about replacement parts, please contact Moen customer service directly.

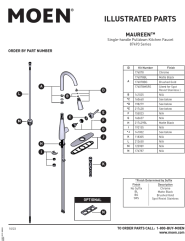
Moen Customer Service: Refer to the official Moen website or product packaging for the most current contact information.



© 2025 Moen Incorporated. All rights reserved.

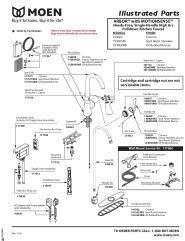
Related Documents - 118305

	<p>Moen Essie Hands-Free Pulldown Kitchen Faucet Illustrated Parts List</p> <p>Detailed illustrated parts list for the Moen Essie™ Hands-Free, Single-Handle High Arc Pulldown Kitchen Faucet. Find replacement parts by model number and part number, including finishes like Chrome, Spot Resist Stainless, Mediterranean Bronze, and Matte Black.</p>
	<p>Moen Anabelle™ Single-Handle Kitchen Faucet Illustrated Parts</p> <p>Detailed illustrated parts list for the Moen Anabelle™ Single-Handle Kitchen Faucet (Model 87650SRS), including part numbers, descriptions, and ordering information. Find replacement parts for your Moen faucet.</p>



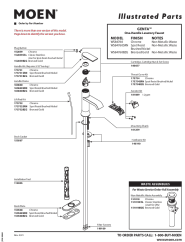
Maureen 87493 Series Single-Handle Pulldown Kitchen Faucet Illustrated Parts

Illustrated parts list for the Moen Maureen 87493 Series single-handle pulldown kitchen faucet, including kit numbers and finishes like Chrome, Matte Black, Brushed Gold, and Spot Resist Stainless.



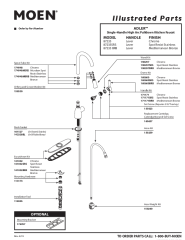
Moen ARBOR™ MOTIONSENSE™ Hands-Free Pulldown Kitchen Faucet Illustrated Parts

Detailed illustrated parts list for the Moen ARBOR™ with MOTIONSENSE™ Hands-Free Single-Handle High Arc Pulldown Kitchen Faucet (Models 7594EC, 7594ESRS, 7594EORB). Includes part numbers, finishes, and ordering information for replacement components.



Moen GENTA™ One-Handle Lavatory Faucet Illustrated Parts List

Detailed illustrated parts list for the Moen GENTA™ One-Handle Lavatory Faucet, including part numbers, finishes, and assembly information for replacement parts.



Moen ADLER™ Single-Handle High Arc Pulldown Kitchen Faucet Illustrated Parts List

Detailed illustrated parts list for the Moen ADLER™ Single-Handle High Arc Pulldown Kitchen Faucet, including model numbers, finishes, and part descriptions for easy identification and ordering.