

Schonbek 1250-26BD

Schonbek 1250-26BD Rondelle Semi Flush Mount Lighting Fixture

Instruction Manual

INTRODUCTION

This manual provides detailed instructions for the safe installation, operation, and maintenance of your Schonbek 1250-26BD Rondelle Semi Flush Mount Lighting Fixture. Please read all instructions carefully before beginning installation and retain this manual for future reference.

The Schonbek 1250-26BD is a semi-flush mount lighting fixture featuring Swarovski crystals and a French Gold finish, designed to provide elegant illumination.



Image: The Schonbek 1250-26BD Rondelle Semi Flush Mount Lighting Fixture in French Gold.

SAFETY INFORMATION

WARNING: Risk of Electric Shock. Disconnect power at the fuse box or circuit breaker before installation or servicing.

- All electrical connections must be in accordance with local codes, ordinances, or the National Electric

Code (NEC).

- Consult a qualified electrician if you are unsure about wiring procedures.
- Use only UL/ETL listed wire connectors.
- Do not exceed the maximum wattage specified for the bulbs.
- Handle crystal components with care to prevent breakage or injury.
- Ensure the mounting surface can support the weight of the fixture.

PACKAGE CONTENTS

Carefully unpack your fixture and identify all parts. Keep all packaging materials until you are sure all parts are accounted for and in good condition. If any parts are missing or damaged, do not attempt to assemble or install the fixture. Contact customer service for assistance.

- Fixture Body (Canopy and Frame)
- Crystal Components (various shapes and sizes)
- Mounting Hardware (crossbar, mounting screws, wire nuts)
- Instruction Manual

Note: Bulbs are not included. This fixture requires A19-1 type bulbs, 60 Watts maximum.

SETUP AND INSTALLATION

Tools Required (Not Included):

- Phillips Head Screwdriver
- Flat Head Screwdriver
- Wire Strippers
- Electrical Tape
- Safety Glasses
- Ladder

Step 1: Prepare for Installation

1. Turn off power at the main fuse box or circuit breaker to prevent electrical shock.
2. Remove the old fixture, if applicable.
3. Carefully unpack the new fixture and lay out all parts on a clean, soft surface.

Step 2: Mount the Crossbar

1. Attach the mounting crossbar to the outlet box using the provided mounting screws. Ensure the crossbar is securely fastened.

Step 3: Wiring the Fixture

1. Connect the fixture's bare copper ground wire to the green or bare copper ground wire from the outlet box using a wire nut. If no ground wire is present, attach it to the green grounding screw on the crossbar.
2. Connect the fixture's ribbed (or white) wire to the white (neutral) wire from the outlet box using a wire nut.
3. Connect the fixture's smooth (or black) wire to the black (hot) wire from the outlet box using a wire nut.

4. Carefully tuck all wires into the outlet box.

Step 4: Secure the Fixture Body

1. Align the fixture's canopy with the mounting screws on the crossbar.
2. Secure the fixture to the crossbar using the decorative nuts or screws provided, ensuring it is flush against the ceiling.

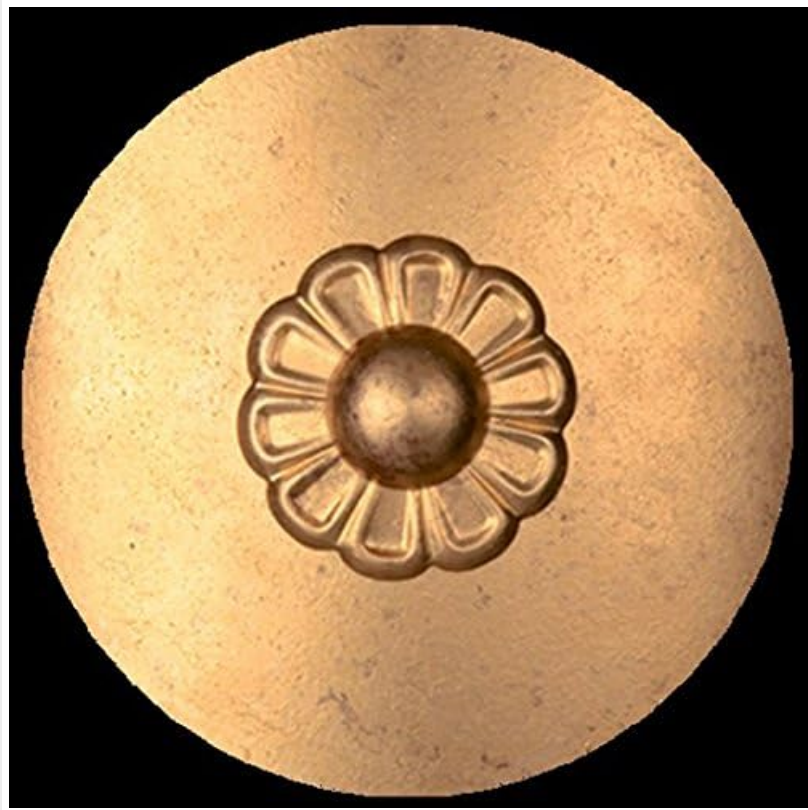


Image: Detail of the fixture's canopy or a mounting component.

Step 5: Attach Crystal Components

1. Refer to the included crystal diagram (if provided) for the correct placement of each crystal strand.
2. Carefully attach each crystal component to the designated hooks or loops on the fixture frame.
3. Handle crystals by their metal pins or strings to avoid fingerprints.



Image: The intricate crystal assembly of the fixture, showing various crystal shapes and their arrangement.

Step 6: Install Bulbs

1. Screw the recommended A19-1 type bulbs (60 Watts maximum) into the sockets. Do not overtighten.

Step 7: Restore Power

1. Turn on power at the main fuse box or circuit breaker.
2. Test the fixture to ensure it is working correctly.

OPERATING INSTRUCTIONS

The Schonbek 1250-26BD fixture operates like any standard lighting fixture. Once properly installed and powered, it can be controlled via a wall switch connected to the circuit. This fixture is designed for use with A19-1 incandescent or compatible LED bulbs, up to 60 watts maximum per socket.

- Ensure bulbs are securely screwed into their sockets.
- Use only bulbs that meet the specified wattage and type requirements.

MAINTENANCE

Cleaning the Fixture:

- **Always turn off power to the fixture before cleaning.**
- For the metal finish (French Gold), wipe with a soft, dry cloth. Do not use abrasive cleaners or polishes, as they may damage the finish.
- For the Swarovski crystals, use a soft, lint-free cloth dampened with distilled water or a specialized crystal cleaner. Gently wipe each crystal. Avoid spraying cleaner directly onto the fixture to prevent damage to electrical components.
- Regular dusting with a feather duster or soft brush will help maintain the luster of the crystals.

Bulb Replacement:

- Turn off power to the fixture at the circuit breaker.
- Allow bulbs to cool completely before touching.
- Unscrew the old bulb and replace it with a new A19-1 type bulb, 60 Watts maximum.
- Restore power and test the fixture.

TROUBLESHOOTING

Problem	Possible Cause	Solution
Fixture does not light.	Power is off. Faulty bulb. Incorrect wiring. Loose connection.	Ensure power is on at the circuit breaker. Replace bulb with a known good one. Check wiring connections (ensure power is off first). Tighten all electrical connections.
Bulb flickers.	Loose bulb. Incorrect bulb type/wattage. Loose wiring connection.	Tighten bulb securely. Ensure bulb matches specifications (A19-1, 60W max). Check wiring connections (ensure power is off first).
Fixture hums.	Incompatible dimmer switch. Loose components.	Ensure dimmer switch is compatible with the bulb type. Check that all parts are securely fastened.

SPECIFICATIONS

- **Model:** 1250-26BD
- **Brand:** Schonbek
- **Material:** Crystal
- **Color:** French Gold
- **Mounting Type:** Semi Flush Mount
- **Power Source:** Corded Electric
- **Voltage:** 110 Volts
- **Bulb Type:** A19-1 (Not Included)
- **Max Wattage:** 60 Watts
- **Product Dimensions:** 5.5 x 5.5 x 7.5 inches
- **Item Weight:** 2 Pounds
- **UPC:** 771857096101

WARRANTY AND SUPPORT

For warranty information or technical support, please contact Schonbek customer service directly. Details can typically be found on the manufacturer's official website or through your retailer.

Schonbek Official Website: www.schonbek.com

Please have your model number (1250-26BD) and purchase date available when contacting support.

