

Dorman 901-400

Dorman 901-400 Front Driver Side Power Window Switch Instruction Manual

Model: 901-400 | Brand: Dorman

INTRODUCTION

This manual provides comprehensive instructions for the installation, operation, and maintenance of your Dorman 901-400 Front Driver Side Power Window Switch. This component is designed as a direct replacement to restore window switch functionality in compatible vehicles.

PRODUCT OVERVIEW

The Dorman 901-400 Power Window Switch is a front driver side unit featuring 5 buttons, designed to control the power windows and potentially other functions like mirror adjustment, depending on the vehicle's original configuration. It is engineered to match the fit, function, and performance of the factory switch.

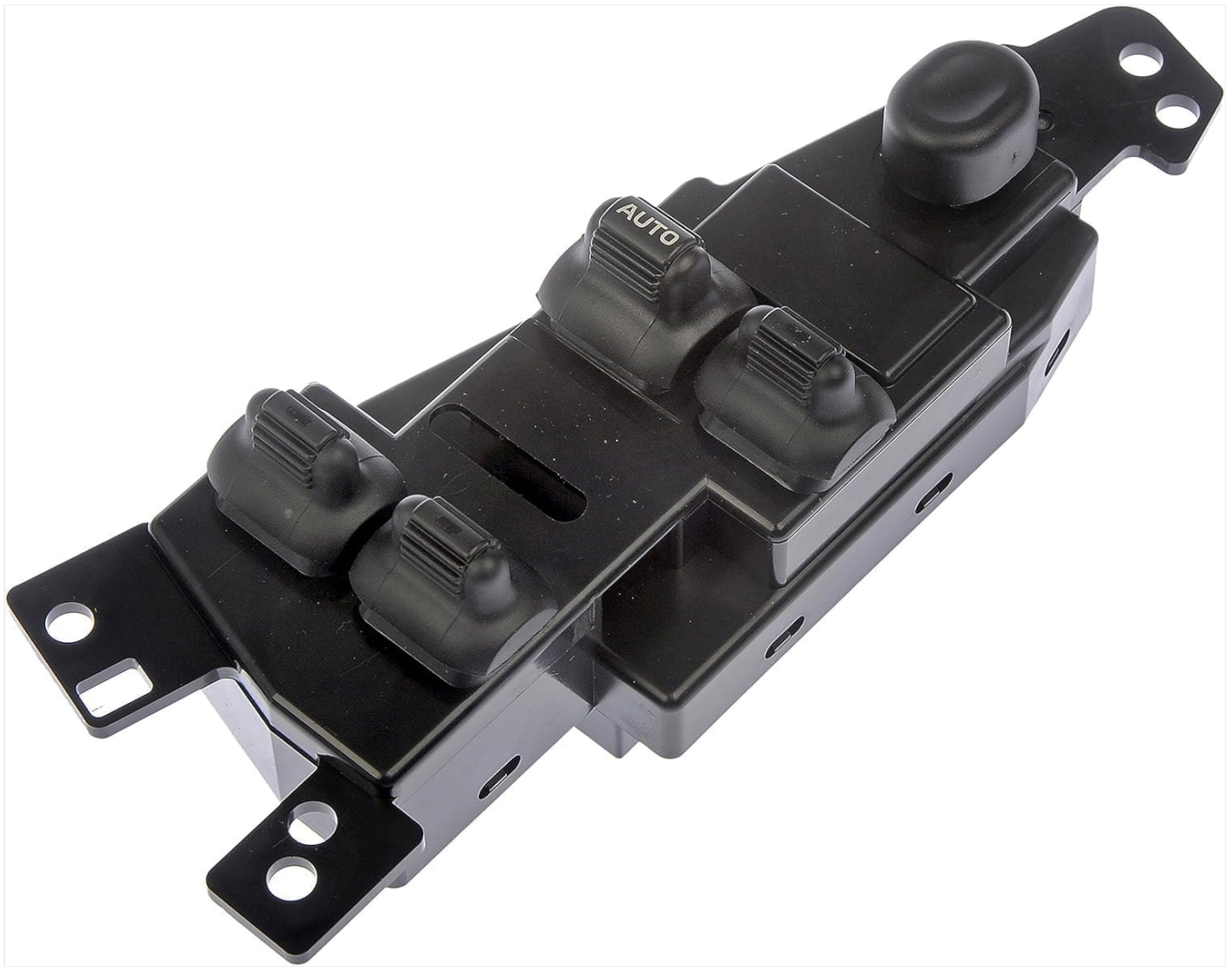


Figure 1: Top view of the Dorman 901-400 Power Window Switch, showing the button layout.





Figure 2: Bottom view of the Dorman 901-400 Power Window Switch, showing the mounting points and electrical connectors.

COMPATIBILITY

This power window switch is compatible with the following vehicle models. Always verify fitment using your vehicle's make, model, and trim level before installation.

- **Chrysler 300M:** 1999, 2000, 2001, 2002, 2003, 2004
- **Chrysler Concorde:** 1998, 1999, 2000, 2001, 2002, 2003, 2004
- **Chrysler LHS:** 1999, 2000, 2001
- **Chrysler Sebring:** 2001, 2002, 2003, 2004, 2005, 2006
- **Dodge Intrepid:** 1998, 1999, 2000, 2001, 2002, 2003, 2004
- **Dodge Stratus:** 2001, 2002, 2003, 2004, 2005, 2006

WHAT'S IN THE BOX

- 1 x Dorman 901-400 Front Driver Side Power Window Switch

INSTALLATION INSTRUCTIONS

Warning: Disconnect the vehicle's battery before beginning any electrical work to prevent injury or damage to electrical components.

1. **Preparation:** Gather necessary tools, which may include a flat-head screwdriver, Phillips-head screwdriver, trim removal tools, and a socket wrench.
2. **Remove Door Panel:** Carefully remove the interior door panel. This typically involves removing screws hidden under trim pieces or door handles, then gently prying the panel away from the door frame. Refer to your vehicle's specific service manual for detailed door panel removal instructions.
3. **Disconnect Old Switch:** Locate the existing power window switch assembly. Disconnect the electrical connectors by pressing the release tabs and pulling them apart.
4. **Remove Old Switch:** Unclip or unscrew the old switch from the door panel or armrest.
5. **Install New Switch:** Position the new Dorman 901-400 switch into the opening. Ensure it snaps securely into place or is fastened with screws as per the original design.
6. **Connect Electrical:** Reconnect all electrical connectors to the new switch. Ensure they are fully seated and locked.
7. **Test Functionality:** Before reattaching the door panel, reconnect the vehicle's battery. Test all functions of the new switch: all windows (up/down), window lock, and mirror controls if applicable.
8. **Reinstall Door Panel:** If the switch functions correctly, reattach the door panel by aligning the clips and pressing it firmly into place. Reinstall any removed screws or trim pieces.

Note: If you are unsure about any step, it is recommended to consult a qualified mechanic or refer to your vehicle's official service manual.

Your browser does not support the video tag.

Video 1: An overview of Dorman Window Switches, demonstrating their design and ease of installation. This video provides general insight into Dorman's replacement switch philosophy and may assist with understanding the installation process.

OPERATING INSTRUCTIONS

The Dorman 901-400 switch operates identically to the original factory unit. Familiarize yourself with the button layout for proper use.

- **Window Control Buttons:** Each window has a dedicated button. Press down to lower the window, and pull up to raise it. Some buttons may feature an "AUTO" function for one-touch full opening or closing.
- **Window Lock Button:** This button typically disables the passenger window controls, allowing only the driver to operate them. Press to engage/disengage.
- **Mirror Adjustment Joystick/Buttons:** If present, use the joystick or directional buttons to adjust the left (L) or right (R) side mirrors.

MAINTENANCE

The Dorman 901-400 Power Window Switch requires minimal maintenance. To ensure longevity and proper function:

- Keep the switch clean and free from dust, dirt, and liquid spills. Use a soft, dry cloth for cleaning.
- Avoid excessive force when operating the buttons.
- If any issues arise, refer to the troubleshooting section or consult a professional.

TROUBLESHOOTING

If you experience issues with your Dorman 901-400 Power Window Switch, consider the following common troubleshooting steps:

- **Window Not Responding:**
 - Check if the window lock button is engaged.
 - Verify all electrical connections to the switch are secure.
 - Inspect the vehicle's fuse box for a blown fuse related to the power windows.
 - Ensure the window motor is functioning correctly.
- **Intermittent Operation:**
 - This could indicate a loose connection or a failing component. Recheck connections.
 - Inspect wiring for any signs of damage or corrosion.
- **Buttons Feel Stiff:**
 - While Dorman switches are designed for durability, some users report initial stiffness. Continued use typically resolves this.
 - Ensure no debris is lodged around the buttons.

If these steps do not resolve the issue, professional diagnosis by a qualified mechanic is recommended.

SPECIFICATIONS

Feature	Detail
Model Number	901-400
Brand	Dorman
Part Type	Front Driver Side Power Window Switch
Number of Buttons	5
Operation Mode	ON-OFF
Current Rating	2 Amps
Operating Voltage	120 Volts
Contact Type	Normally Closed
Connector Type	Crimp
Mounting Type	Plug In Mount
Material	Copper (Contact Material)
Color	Black
Item Weight	1.6 ounces
Product Dimensions (L x W x H)	7.75 x 3 x 2.5 inches

WARRANTY AND SUPPORT



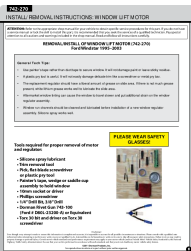

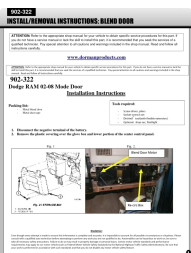
For specific warranty information and technical support, please refer to the official Dorman Products website or contact their customer service directly. Dorman provides a range of resources to assist with product inquiries and support needs.

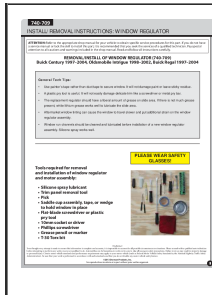
Manufacturer: Dorman Products

© 2024 Dorman Products. All rights reserved.

This manual is for informational purposes only. Always follow safety precautions and consult a professional for complex installations.

Related Documents - 901-400

	<p>Chrysler Pacifica Interior Door Handle Kit Installation and Removal Guide (2008-2004)</p> <p>Step-by-step instructions for the removal and installation of the interior door handle kit for 2008-2004 Chrysler Pacifica models. Includes kit contents, required tools, and detailed procedures.</p>
	<p>Dorman 917-327 Transmission Dipstick Tool: Installation Guide & Vehicle Compatibility</p> <p>Comprehensive guide for the Dorman 917-327 Transmission Dipstick Tool, covering installation steps, usage, and detailed vehicle compatibility for Dodge, Chrysler, Jeep, and Volkswagen models with various transmission types.</p>
	<p>Dorman 742-270 Window Lift Motor Installation and Removal Instructions for Ford Windstar (1995-2003)</p> <p>Detailed guide for the removal and installation of the Dorman 742-270 window lift motor on Ford Windstar models from 1995 to 2003. Includes tools, tips, and step-by-step procedures.</p>
	<p>Dorman 600-901 Transfer Case Motor Diagnostic Trouble Codes Guide</p> <p>A guide to understanding and troubleshooting diagnostic trouble codes (DTCs) related to the Dorman 600-901 Transfer Case Motor, compatible with various Cadillac, Chevrolet, and GMC models.</p>
	<p>Dorman 902-322 HVAC Blend Door Installation Instructions for Dodge RAM 02-08</p> <p>Comprehensive installation and removal guide for the Dorman 902-322 HVAC Blend Door repair kit, specifically for Dodge RAM models from 2002 to 2008. Includes parts list, tools required, step-by-step instructions, and diagram descriptions.</p>



[Dorman 740-709 Window Regulator Installation and Removal Instructions](#)

Comprehensive guide for removing and installing the Dorman 740-709 window regulator on Buick Century (1997-2004), Oldsmobile Intrigue (1998-2002), and Buick Regal (1997-2004). Includes detailed steps, required tools, and technical tips.