

Granberg G555B

Granberg Portable Chainsaw Edging Sawmill G555B-24 Instruction Manual

Model: G555B | Brand: Granberg

1. INTRODUCTION

This manual provides essential instructions for the safe and effective use of your Granberg Portable Chainsaw Edging Sawmill, Model G555B-24. This tool is designed to guide a chainsaw for making vertical cuts on logs, facilitating the creation of dimensional lumber or squaring logs. Please read this manual thoroughly before assembly or operation.



Image 1: The Granberg G555B-24 Edging Sawmill in operation, attached to a log with a chainsaw.



Image 2: Overview graphic of the G555B Edging Mill, highlighting its function as a vertical chainsaw mill guide.

2. SAFETY INFORMATION

Operating a chainsaw and milling equipment can be hazardous. Always prioritize safety to prevent injury or damage. This product contains chemicals known to the State of California to cause cancer and birth defects or other reproductive harm (Proposition 65 warning).

General Safety Precautions:

- Always wear appropriate personal protective equipment (PPE), including eye protection, hearing protection, gloves, and sturdy footwear.
- Ensure your chainsaw is in good working condition, with a sharp chain and proper tension.
- Never operate the sawmill or chainsaw under the influence of drugs or alcohol.
- Keep bystanders, especially children and pets, away from the work area.
- Secure the log firmly to prevent movement during cutting.
- Be aware of kickback potential and maintain a firm grip on the chainsaw.
- Clear the work area of debris and obstacles.

3. PACKAGE CONTENTS

Verify that all components are present before beginning assembly:

- Granberg G555B Edging Sawmill attachment
- 12 feet of V-rail sections
- Wood screws for V-rail attachment
- Forming nails
- Polycarbonate safety guard
- Instruction manual

4. SETUP INSTRUCTIONS

Proper setup is crucial for achieving accurate and safe cuts.

Chainsaw Requirements:

- Your chainsaw must have a minimum engine displacement of 50cc. There is no maximum displacement limit.
- The chainsaw bar must be solid steel, not a laminate bar, for secure attachment and optimal performance.
- The mill is compatible with chainsaw bar lengths ranging from 16 inches to 36 inches.



16"-36" CHAINSAW BAR LENGTH

GRANBERG

Truly straight and even cuts, everytime. Enables user to cut logs at a vertical angle. Comes with V rail, wood screws, and forming nails to help user get exact results. 50cc requirement; no maximum.

Image 3: The G555B Edging Mill supports chainsaw bar lengths from 16 to 36 inches.

Assembling the V-Rail Guide:

1. Obtain a straight 2x6 board of suitable length for your log. This board will serve as the base for your V-rail.
2. Attach the provided V-rail sections to the 2x6 board using the wood screws and forming nails. Ensure the V-rail sections are perfectly aligned and straight along the entire length of the board. Any misalignment will result in uneven cuts.
3. Securely attach the V-rail assembly to the top of the log you intend to mill. For the first cut, it is recommended to use short 2x4 blocks at each end of the log, leveled and positioned at the desired height of your first cut. Place the 2x6 with the V-rail on these blocks and secure it to the log.

Attaching the Mill to the Chainsaw:

Follow the specific instructions provided with your G555B mill for attaching it securely to your chainsaw bar. Ensure all fasteners are tightened appropriately.

5. OPERATING INSTRUCTIONS

The Granberg G555B-24 Edging Sawmill enables precise vertical cuts for milling logs into lumber.

Preparing for the Cut:

- Ensure the log is stable and cannot roll or shift during the cutting process.
- Confirm the V-rail guide is securely attached and perfectly straight. The accuracy of your first cut directly impacts the quality of subsequent cuts.
- Consider using a ripping chain on your chainsaw. Ripping chains are designed for cutting along the grain and can improve cutting efficiency and finish quality.
- Adjust the mill to the desired thickness of your lumber.



Image 4: Features of the Granberg Edging Mill, emphasizing precision and ease of use.

Making the Cut:

1. Start the chainsaw according to its manufacturer's instructions.
2. Engage the chainsaw into the log, allowing the mill to ride smoothly along the V-rail guide.
3. Apply steady, consistent pressure, allowing the chainsaw to cut at its own pace. Do not force the cut, as this can lead to uneven results or kickback.
4. Maintain a firm grip on the chainsaw handles and guide the mill along the entire length of the log.
5. Once the cut is complete, turn off the chainsaw and carefully remove the mill from the log.

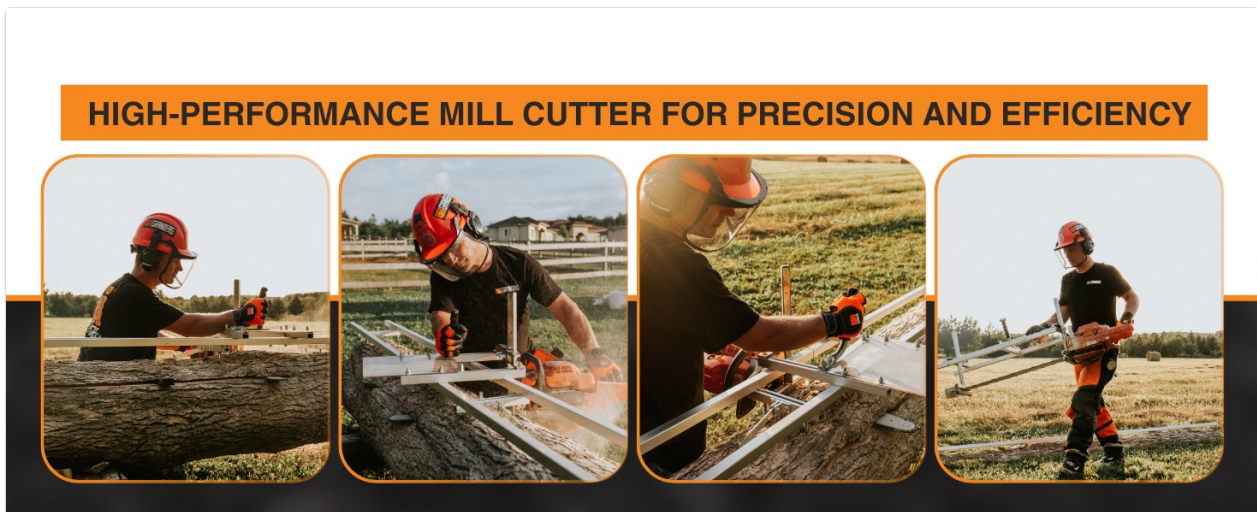


Image 5: A sequence of images demonstrating the high-performance milling process with the Granberg Edging Mill.

6. MAINTENANCE

Regular maintenance ensures the longevity and performance of your Granberg Edging Sawmill.

- After each use, clean the mill components to remove sawdust, sap, and debris.
- Inspect all fasteners and connections for tightness. Re-tighten as necessary.
- Check the V-rail sections for any damage or bending that could affect straightness.
- Store the mill in a dry, protected area to prevent corrosion.

7. TROUBLESHOOTING

If you encounter issues during operation, consider the following:

Uneven Cuts:

- **V-rail Alignment:** Ensure the V-rail sections are perfectly straight and securely attached to the 2x6 guide board.
- **Guide Board Stability:** Verify that the 2x6 guide board is firmly secured to the log and does not flex or move during the cut.
- **Chainsaw Chain Sharpness:** A dull chain can lead to wandering cuts. Sharpen or replace the chain as needed.
- **Feed Rate:** Applying too much or too little pressure can affect cut quality. Maintain a consistent, steady feed rate.

Difficulty Cutting:

- **Chainsaw Power:** Ensure your chainsaw meets the minimum 50cc requirement.
- **Chain Type:** Using a ripping chain can significantly improve cutting efficiency when milling.
- **Chain Sharpness:** A sharp chain is essential for efficient cutting.

8. SPECIFICATIONS

Feature	Specification
Brand	Granberg
Model Number	G555B
Power Source	Hand Powered (Chainsaw attachment)
Item Weight	6.8 Pounds
Product Dimensions	9.84"L x 3.35"W x 1.18"H
Material	Aircraft Aluminum Extrusion & Zinc Plated Steel
Chainsaw Bar Length Compatibility	16" - 36"
Chainsaw Engine Displacement	50cc minimum

Included Components	Mill, 12 ft V-rail, wood screws, forming nails, polycarbonate safety guard
Manufacturing Origin	Made and assembled in the USA

AIRCRAFT ALUMINUM EXTRUSION & ZINC PLATED STEEL

Crafted with high-quality USA made aerospace aluminum extrusion and zinc-plated steel to give it a long lasting life-span. Comes with a polycarbonate safety guard.



Image 6: The G555B Edging Mill is constructed from durable aircraft aluminum extrusion and zinc-plated steel.

9. SUPPORT AND WARRANTY

Granberg is committed to providing high-quality products and support. If you require assistance with your G555B-24 Edging Sawmill, have questions about its operation, or need troubleshooting advice, please contact Granberg customer support. Our team of experts is available to help you.

While specific warranty details are not provided in this manual, Granberg products are proudly made in the USA by a family-owned business, reflecting a commitment to quality and customer satisfaction. For detailed warranty information, please refer to the product packaging or contact Granberg directly.

SUPPORT & ADVICE AVAILABLE

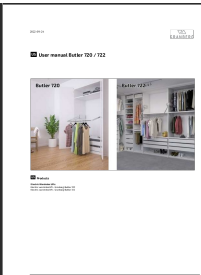
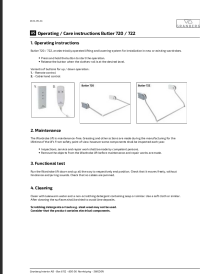
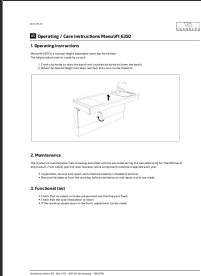


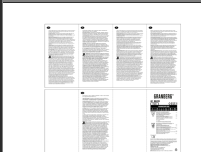
Whether you're a professional arborist, weekend hobbyist, or new woodworker; we have videos available to show you how to use Granberg products. Our support team are experts in their craft and can help you out.



Image 7: Granberg offers support and advice for its products.

© 2025 Granberg International. All rights reserved.

Related Documents - G555B

	<p>Granberg Butler 720/722 Electric Wardrobe Lift User Manual</p> <p>Comprehensive user manual for the Granberg Butler 720 and Butler 722 electric wardrobe lifts. Includes technical specifications, safe usage guidelines, installation information, and spare parts.</p>
	<p>Granberg Butler 720/722 Wardrobe Lift: Operating and Care Instructions</p> <p>Comprehensive operating and care instructions for Granberg Butler 720 and Butler 722 wardrobe lift systems. Learn about installation, maintenance, functional testing, and cleaning.</p>
	<p>Granberg Manulift 6350 Operating and Care Instructions</p> <p>This document provides operating, maintenance, and cleaning instructions for the Granberg Manulift 6350, a manual height-adjustable kitchen worktop.</p>
	<p>Granberg ART. 119.2214 Protective Work Gloves - Technical Specifications and User Information</p> <p>Comprehensive details for Granberg ART. 119.2214 protective work gloves, made from goatskin and Nomex, featuring touchscreen compatibility. Includes performance standards (EN 388, EN 407), maintenance, usage, and compliance information.</p>
	<p>Granberg Baselift 6300H/6300L Installation Instructions</p> <p>Comprehensive installation guide for Granberg Baselift 6300H and 6300L lifting units, covering safety, technical specifications, planning, electrical/water connections, content of delivery, step-by-step assembly, adjustment, and functional testing.</p>
	<p>Granberg 106.3710 Type B Welding Gloves - Technical Specifications and User Guide</p> <p>Detailed information on Granberg 106.3710 Type B welding gloves, including material, maintenance, safety standards (EN 388, EN 407, EN 12477), and usage guidelines for professional welders.</p>