

[Manuals.plus](#) /

> [Cell Spa](#) /

> Cell Spa Dual Ionic Ion Detox Aqua Foot Spa Machine (Model: detox syk66) User Manual

Cell Spa detox syk66

Cell Spa Dual Ionic Ion Detox Aqua Foot Spa Machine User Manual

Model: detox syk66 | Brand: Cell Spa

This manual provides comprehensive instructions for the safe and effective operation of your Cell Spa Dual Ionic Ion Detox Aqua Foot Spa Machine.

IMPORTANT SAFETY INFORMATION

Please read all safety warnings and instructions carefully before using this product. Failure to follow these instructions may result in electric shock, fire, or serious injury.

- **Consult a Medical Professional:** If you are ill, have any disease, or are pregnant, consult a medical doctor before using this device or any alternative treatments.
- **Not a Medical Device:** This product is intended for experimental use only and should not replace competent medical advice. It is not intended to diagnose, treat, cure, or prevent any disease or health condition.
- **Pacemaker Warning:** This therapy is not recommended for persons with a pacemaker.
- **Electrical Safety:** Never operate any electrical or electronic devices while undergoing a foot bath session. Ensure the power cord is undamaged and properly connected.
- **External Use Only:** This device is for external use only. Do not swallow any components or solutions.
- **Children:** Keep out of reach of children.
- **Diabetes:** Hot or warm baths should not be used by persons with diabetes unless advised by a doctor.
- **Sensitivity Test:** Always start with a very small amount of salt (if used) to test your sensitivity.
- **Discontinue Use:** If any signs of irritation occur, discontinue use and consult your doctor.

PACKAGE CONTENTS

Verify that all items listed below are included in your package. If any items are missing or damaged, please contact customer support.

- 1x Cell Spa Dual Ionic Ion Detox Aqua Foot Spa Machine

- 2x Arrays (Ion Generators)
- 2x Wrist Straps
- 1x Power Cord
- 2x Earphone Plugs (for MP3 function)
- 1x Carrying Box
- 1x Instruction Book (this manual)

Note: A foot tub or basin is not included with this unit and must be provided separately.



Image: The Cell Spa Dual Ionic Ion Detox Aqua Foot Spa Machine shown with its included accessories: two arrays, two wrist straps, a power cord, and two earphone plugs.

PRODUCT OVERVIEW

The Cell Spa Dual Ionic Ion Detox Aqua Foot Spa Machine is designed to facilitate a foot bath experience using positive and negative ions. The device features a control panel to manage the session and includes ports for connecting arrays, wrist straps, and earphones for the integrated MP3 player function.

United States of America

United States Patent and Trademark Office

CELLSPA

Reg. No. 3,739,603 DAVID SHIN (UNITED STATES INDIVIDUAL)
Registered Jan. 19, 2010 7322 MADISON STREET
PARAMOUNT, CA 90723

Int. Cl.: 11 FOR: ELECTRIC BATH-WATER PURIFYING APPARATUS FOR HOUSEHOLD PURPOSES;
PORTABLE FOOT BATHS FOR USE IN PEDICURE SALONS AND DAY SPAS, IN CLASS
11 (U.S. CLS. 13, 21, 23, 31 AND 34).
TRADEMARK
PRINCIPAL REGISTER FIRST USE 1-1-2009; IN COMMERCE 1-1-2009.

THE MARK CONSISTS OF STANDARD CHARACTERS WITHOUT CLAIM TO ANY PARTICULAR FONT, STYLE, SIZE, OR COLOR.

SER. NO. 77-760,785, FILED 6-16-2009.

CURTIS FRENCH, EXAMINING ATTORNEY



David J. Kappas

Director of the United States Patent and Trademark Office

with control buttons.

SETUP INSTRUCTIONS

Follow these steps to prepare your foot spa machine for use:

1. **Placement:** Place the Cell Spa machine on a stable, flat surface near an electrical outlet. Ensure it is away from water splashes.
2. **Foot Tub Preparation:** Fill a non-metallic foot tub or basin with warm water. The water level should be sufficient to cover your feet.
3. **Connect Array:** Insert one or two arrays into the water-filled foot tub. Connect the array cable(s) to the designated ports on the front of the Cell Spa machine.
4. **Connect Wrist Strap:** Securely attach a wrist strap to your wrist and plug its cable into the corresponding port on the machine. Ensure good skin contact with the wrist strap.
5. **Power Connection:** Plug the power cord into the machine's power input and then into a standard electrical outlet.
6. **Optional MP3:** If desired, connect earphones to the MP3 earphone jacks on the machine.

OPERATING INSTRUCTIONS

Once set up, follow these steps to begin your foot spa session:

1. **Power On:** Press the power button on the machine to turn it on. The display will illuminate.
2. **Add Salt (Optional):** If your tap water has low mineral content, you may need to add a very small amount of non-iodized salt (e.g., 1/4 to 1/2 teaspoon) to the water to increase conductivity. Stir until dissolved. Monitor the amperage display; aim for a reading within the recommended range (refer to machine display or specific instructions for optimal range).
3. **Begin Session:** Place your feet into the water, ensuring they are fully submerged and the wrist strap is making good contact.
4. **Set Time:** Use the control buttons to set your desired session duration. A typical session lasts 30 minutes.
5. **Start:** Press the start button to begin the ionic foot bath session. The machine will start generating ions, and you may observe changes in the water color and consistency over time.
6. **Monitor:** Observe the session. The water color change is a natural reaction between the array, water minerals, and any added salt.
7. **End Session:** The machine will automatically stop when the set time expires. You can also manually stop the session at any time by pressing the stop button.
8. **Clean Up:** Remove your feet from the tub. Disconnect the wrist strap and power off the machine. Proceed to the Maintenance section for cleaning instructions.

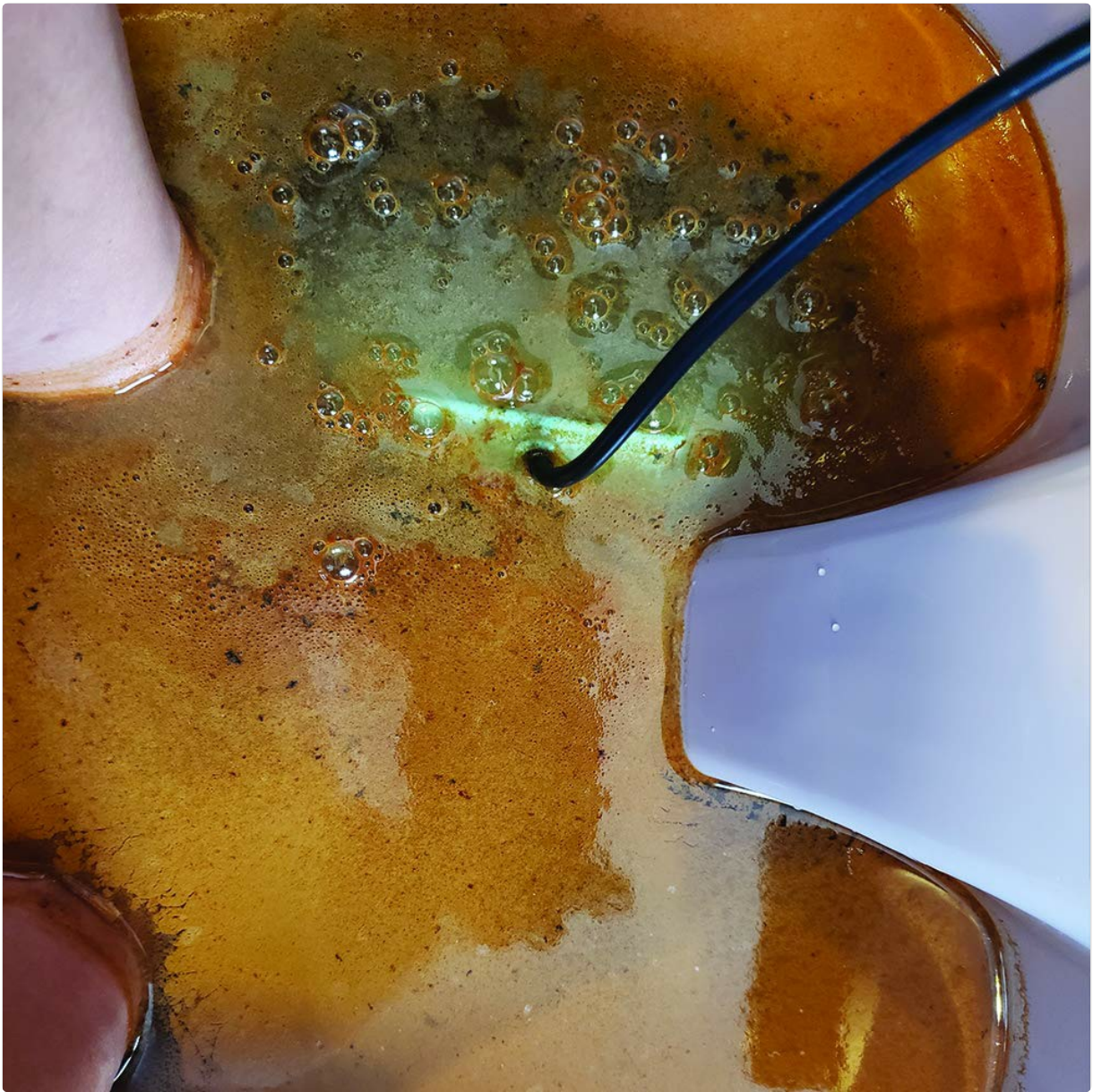


Image: Water in a foot bath during an ionic session, showing a noticeable change in color and texture, which is a common observation during operation.

MAINTENANCE AND CARE

Proper maintenance ensures the longevity and optimal performance of your Cell Spa machine.

- **Clean Arrays:** After each use, thoroughly clean the arrays with a brush and warm soapy water to remove any residue. Rinse well and allow to air dry completely before storage.
- **Wipe Down Machine:** Use a soft, damp cloth to wipe the exterior of the main unit. Do not use abrasive cleaners or immerse the unit in water.
- **Store Properly:** Store the machine and all accessories in a cool, dry place, preferably in its original carrying box, away from direct sunlight and moisture.
- **Inspect Cables:** Periodically check all cables (power, array, wrist strap) for any signs of wear or damage. Replace if necessary.

TROUBLESHOOTING

If you encounter issues with your Cell Spa machine, refer to the table below for common problems and solutions.

Problem	Possible Cause	Solution
Machine does not power on.	Power cord not connected; outlet not working; machine fault.	Ensure power cord is securely plugged in. Test outlet with another device. Contact customer support if issue persists.
No amperage reading or very low reading.	Low water conductivity; array or wrist strap not connected properly; array worn out.	Add a small amount of non-iodized salt to the water. Ensure array and wrist strap are securely connected and making good contact. Replace array if it is old or damaged.
Water does not change color.	Similar to low amperage; water mineral content.	Ensure proper amperage reading. Water color change is a reaction with water minerals and the array; results can vary based on water source.
MP3 player not working.	Earphones not plugged in correctly; MP3 function not activated.	Ensure earphones are fully inserted into the jack. Refer to the machine's specific controls for MP3 playback.

TECHNICAL SPECIFICATIONS

- **Model Number:** detox syk66
- **Brand:** Cell Spa
- **UPC:** 705105886015
- **ASIN:** B0019BEJB0
- **Package Dimensions:** Approximately 17 x 15 x 6 inches
- **Item Weight:** Approximately 8.85 Pounds
- **Power Source:** Standard AC (via included power cord)

WARRANTY AND CUSTOMER SUPPORT

For specific warranty information, please refer to the documentation provided at the time of purchase or contact the manufacturer directly. Cell Spa is committed to customer satisfaction.

If you have any questions, require technical assistance, or need to report a problem with your device, please contact the manufacturer or your retailer for support.