

Manuals+

[Q & A](#) | [Deep Search](#) | [Upload](#)

manuals.plus /

› [HOT TOOLS](#) /

› [Hot Tools Pro Artist 1875W Turbo Ionic Dryer Instruction Manual](#)

HOT TOOLS 1023

Hot Tools Pro Artist 1875W Turbo Ionic Dryer Instruction Manual

Comprehensive guide for operating and maintaining your Hot Tools Pro Artist 1875W Turbo Ionic Dryer, Model 1023.

[Introduction](#)

[Safety Information](#)

[Setup](#)

[Operation](#)

[Maintenance](#)

[Troubleshooting](#)

[Warranty &](#)

[Support](#)

[Specifications](#)

1. INTRODUCTION

The Hot Tools Pro Artist 1875W Turbo Ionic Dryer is designed to provide efficient and effective hair drying with advanced features. This manual provides detailed instructions for safe operation, maintenance, and troubleshooting to ensure optimal performance and longevity of your appliance.

Key features include:

- **Ionic Technology:** Reduces frizz and enhances shine for healthy-looking hair.
- **Powerful Airflow:** 1875 watts for faster drying times.
- **Versatile Settings:** Six heat and two speed options to suit various hair types and textures.
- **Cool Shot Button:** Locks in styles with a burst of cool air.
- **Lightweight Design:** For comfortable handling during use.
- **Included Attachments:** Concentrator and Styling Pik for precise styling. A diffuser is also included for curly hair.
- **Easy Maintenance:** Removable end cap and filter for simple cleaning.



Figure 1: Hot Tools Pro Artist 1875W Turbo Ionic Dryer with included concentrator and styling pik attachments.

Your browser does not support the video tag.

Video 1: Hot Tools Brand Story. This video provides a general overview of the Hot Tools brand and its commitment to professional styling tools.

2. IMPORTANT SAFETY INFORMATION

WARNING: To reduce the risk of electric shock, burns, fire, or injury to persons:

- Always unplug the appliance immediately after use.
- Do not use while bathing or in a shower.
- Do not place or store appliance where it can fall or be pulled into a tub or sink.
- Do not place in or drop into water or other liquid.
- Do not reach for an appliance that has fallen into water. Unplug immediately.
- Close supervision is necessary when this appliance is used by, on, or near children or individuals with certain disabilities.
- Use this appliance only for its intended use as described in this manual. Do not use attachments not recommended by the manufacturer.

- Never operate this appliance if it has a damaged cord or plug, if it is not working properly, or if it has been dropped, damaged, or dropped into water. Return the appliance to a service center for examination and repair.
- Keep the cord away from heated surfaces. Do not wrap the cord around the appliance.
- Never block the air openings of the appliance or place it on a soft surface, such as a bed or couch, where the air openings may be blocked. Keep the air openings free of lint, hair, and the like.
- Never use while sleeping.
- Never drop or insert any object into any opening.
- Do not use outdoors or operate where aerosol (spray) products are being used or where oxygen is being administered.
- Do not direct hot air towards eyes or other heat-sensitive areas.
- Attachments may be hot during use. Allow them to cool before handling.
- Do not place appliance on any surface while it is operating.
- While using the dryer, keep your hair away from the air intake vents.
- This appliance has a polarized plug (one blade is wider than the other). As a safety feature, this plug will fit in a polarized outlet only one way. If the plug does not fit fully in the outlet, reverse the plug. If it still does not fit, contact a qualified electrician. Do not attempt to defeat this safety feature.
- Adjust heat settings to prevent damage for all hair types.

3. SETUP AND FIRST USE

Before using your Hot Tools Pro Artist 1875W Turbo Ionic Dryer, ensure it is properly set up.

1. **Unpack:** Carefully remove the dryer and all accessories from the packaging.
2. **Inspect:** Check the dryer and cord for any signs of damage. Do not use if damaged.
3. **Plug In:** Insert the polarized plug into a standard 110V electrical outlet. Ensure the plug fits securely.
4. **Attach Accessories:**
 - **Concentrator:** For focused airflow, attach the concentrator nozzle to the front of the dryer. This is ideal for smoothing and directing air to specific sections of hair.
 - **Styling Pik:** For straightening and detangling during drying, attach the styling pik.
 - **Diffuser:** For enhancing natural curls and waves, attach the diffuser.



Figure 2: The Hot Tools Pro Artist 1875W Turbo Ionic Dryer shown with its concentrator, styling pik, and diffuser attachments, along with styling clips.

4. OPERATING INSTRUCTIONS

Follow these steps for effective and safe operation of your hair dryer.

1. **Power On:** Slide the SPEED switch to your desired setting (LOW or HIGH).
2. **Select Heat:** Adjust the HEAT switch to your preferred temperature (LOW, MEDIUM, or HIGH).
3. **Drying Hair:**
 - For general drying, use a higher heat and speed setting.
 - For delicate or fine hair, use lower heat and speed settings to prevent damage.
 - For styling with the concentrator, direct the airflow downwards along the hair shaft to smooth cuticles and add shine.
 - For curly hair with the diffuser, gently cup sections of hair in the diffuser and lift towards the scalp to enhance curls and reduce frizz.
 - For straightening with the styling pik, comb through sections of hair while drying.

4. **Cool Shot:** Press and hold the COOL SHOT button (located above the HEAT switch) to deliver a burst of cool air. This helps to set your style and add shine. Release the button to return to the selected heat setting.
5. **Power Off:** After use, slide the SPEED switch to the OFF position and unplug the dryer from the electrical outlet.

COOL SHOT TO SET STYLE

6 HEAT / SPEED SETTINGS FOR ALL HAIR TYPES AND TEXTURES



Figure 3: Detailed view of the control switches for heat (High, Med, Low) and speed (High, Low, Off), along with the Cool Shot button.



Figure 4: Illustration of the heat and speed control switches on the dryer handle.

5. MAINTENANCE AND CLEANING

Regular cleaning of your hair dryer will help maintain its performance and extend its lifespan.

1. **Unplug:** Always ensure the dryer is unplugged from the power outlet and completely cool before cleaning.
2. **Clean Air Intake Filter:** The dryer features a removable end cap and filter for easy cleaning.
 - Gently twist or pull off the rear filter cap.
 - Remove any accumulated lint, dust, or hair from the filter screen using a soft brush or cloth.
 - Rinse the filter under running water if necessary, ensuring it is completely dry before reattaching.
 - Replace the filter cap by aligning it and twisting or pushing it back into place until secure.
3. **Clean Exterior:** Wipe the exterior of the dryer with a soft, damp cloth. Do not use abrasive cleaners or solvents.
4. **Storage:** When not in use, store the dryer in a cool, dry place. Do not wrap the cord tightly around the dryer, as this can damage the cord. Utilize the hanging ring for convenient storage.

6. TROUBLESHOOTING

If you encounter issues with your Hot Tools Pro Artist 1875W Turbo Ionic Dryer, refer to the following common problems and solutions:

Problem	Possible Cause	Solution
Dryer does not turn on.	No power, faulty outlet, or internal issue.	Ensure the dryer is securely plugged into a working outlet. Check the circuit breaker. If the issue persists, contact customer support.
Airflow is weak or inconsistent.	Blocked air intake filter.	Unplug the dryer and clean the removable air intake filter as described in the Maintenance section.
Dryer produces inconsistent heat (e.g., hot air switches to cold).	Overheating protection activated, or internal component issue.	Unplug the dryer and allow it to cool down for several minutes. Clean the air filter. If the problem continues, seek professional repair.
Buttons/switches are accidentally changed during use.	Hand placement during operation.	Adjust your grip to avoid accidental contact with the heat and speed switches.
Power cord shows signs of wear or damage.	Normal wear and tear, improper storage.	Immediately discontinue use. A damaged cord can pose a serious safety hazard. Contact customer support for repair or replacement. Do not attempt to repair yourself.

7. PRODUCT SPECIFICATIONS

- **Model Number:** 1023
- **Power:** 1875 Watts
- **Voltage:** 110V
- **Power Source:** Corded Electric
- **Dimensions:** 11.5 x 3.75 x 9.25 inches

- **Weight:** 1.6 Pounds
- **Color:** Black/Silver
- **Technology:** Ionic
- **Manufacturer:** Helen of Troy

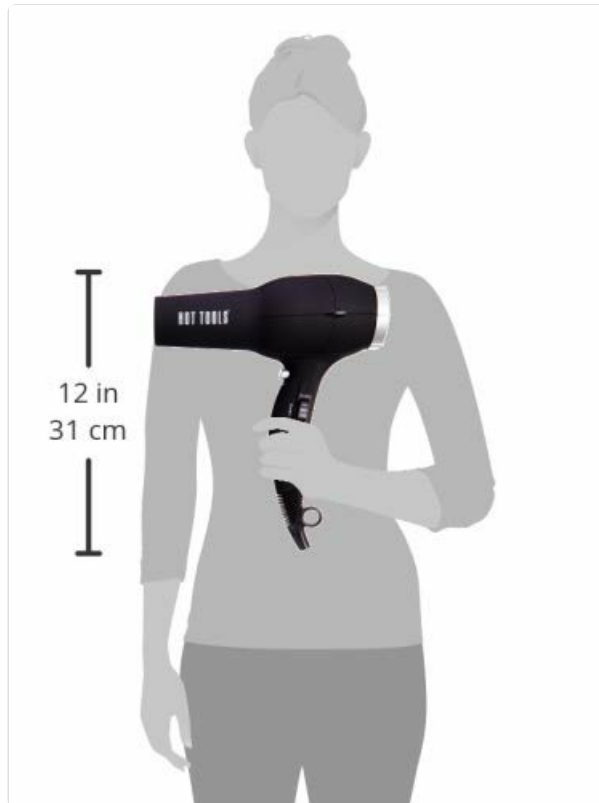


Figure 5: Product dimensions of the Hot Tools Pro Artist 1875W Turbo Ionic Dryer.

8. WARRANTY AND CUSTOMER SUPPORT

For warranty information, product registration, or customer support, please contact the manufacturer, Helen of Troy. Refer to the product packaging or the official Hot Tools website for the most current warranty details and contact information.

It is recommended to retain your purchase receipt as proof of purchase for warranty claims.

Manufacturer: Helen of Troy

For further assistance, visit the official [HOT TOOLS Store](#).