

Manuals.plus /

- › Riesen /
- › RIESEN Chewy Dark Chocolate Caramel Candy Instruction Manual

Riesen B0018AXELI

RIESEN Chewy Dark Chocolate Caramel Candy Instruction Manual

Model: B0018AXELI

1. INTRODUCTION

RIESEN Chewy Dark Chocolate Caramel Candy offers a rich and long-lasting chewy treat. Each piece features a dark chocolate exterior enrobing a decadent chocolate caramel filling. RIESEN, Germany's first candy brand, is known for its intense chocolatey taste, derived from this unique combination.

This manual provides essential information regarding the handling, storage, and consumption of RIESEN candies to ensure optimal enjoyment and product quality.

2. UNPACKING AND STORAGE

Upon receiving your RIESEN Chewy Dark Chocolate Caramel Candy, carefully open the outer packaging. The candies are individually wrapped to maintain freshness and quality.





Figure 2.1: Front view of RIESEN Chewy Dark Chocolate Caramel Candy bag.

2.1 Storage Recommendations

- Store in a cool, dry place to maintain freshness and prevent melting or discoloration.
- Avoid direct sunlight or extreme temperatures.
- Keep the bag sealed when not in use to preserve the candy's texture and flavor.

3. CONSUMPTION GUIDELINES

RIESEN candies are designed for individual enjoyment. Each piece is wrapped for convenience and hygiene.

3.1 How to Enjoy

1. Unwrap one individually packaged RIESEN candy.
2. Consume directly. The chewy caramel center and dark chocolate coating provide a satisfying, long-lasting flavor experience.
3. It is recommended to enjoy up to 4 pieces as a snack.

4. INGREDIENTS AND NUTRITIONAL INFORMATION

Understanding the components of your RIESEN candy is important for dietary considerations.





Figure 4.1: Back view of RIESEN Chewy Dark Chocolate Caramel Candy bag with nutritional information.

4.1 Ingredients List

Glucose Syrup (From Wheat or Corn), Semisweet Chocolate (Sugar, Chocolate Liquor, Cocoa Butter, Butterfat, Soy Lecithin Emulsifier, Vanilla Powder), Sugar, Whey, Palm Oil, Condensed Skim Milk, Cocoa Processed With Alkali, Sorbitol (From Wheat Or Corn), Reduced Minerals Whey, Food Starch-Modified.

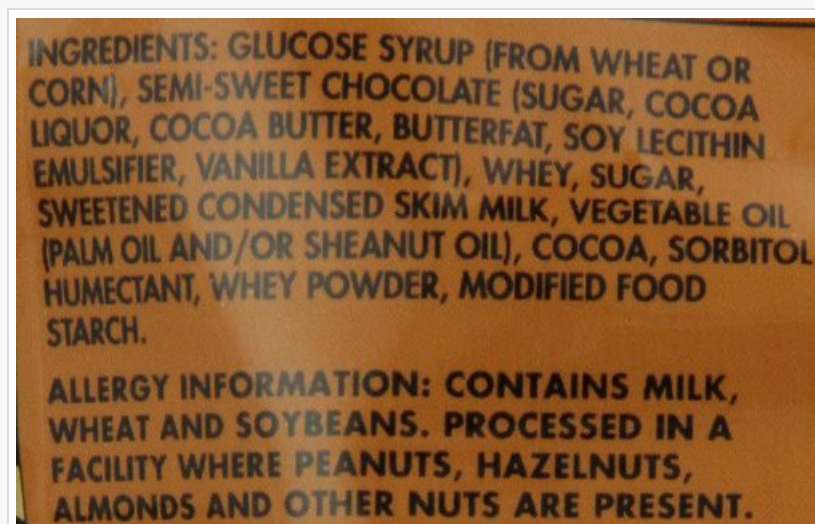


Figure 4.2: Detailed view of RIESEN candy ingredients.

4.2 Allergy Information

Contains Milk, Soybeans and Wheat.

Processed in a facility where Hazelnuts, Almonds, Peanuts and Other Nuts are Present.



Figure 4.3: Detailed view of RIESEN candy nutrition facts.

4.3 Nutritional Facts (per 4 pieces / 36g serving)

| Nutrient | Amount | % Daily Value* |
|--------------------|--------|----------------|
| Calories | 170 | |
| Total Fat | 6g | 9% |
| Saturated Fat | 3.5g | 18% |
| Trans Fat | 0g | |
| Cholesterol | 0mg | 0% |
| Sodium | 15mg | 1% |
| Total Carbohydrate | 28g | 9% |
| Dietary Fiber | 0g | 0% |
| Sugars | 15g | |
| Protein | 1g | |
| Vitamin A | 0% | |
| Vitamin C | 0% | |
| Calcium | 2% | |
| Iron | 7% | |

*The % Daily Value (DV) tells you how much a nutrient in a serving of food contributes to a daily diet. 2,000 calories a day is used for general nutrition advice.

5. TROUBLESHOOTING

5.1 Discolored or Faded Chocolate

If the chocolate appears discolored, faded, or powdery, this is often due to "chocolate bloom." This is a common phenomenon where cocoa butter or sugar crystals rise to the surface, typically caused by temperature fluctuations during storage. While it may affect the appearance and texture, chocolate bloom does not generally indicate spoilage or make the candy unsafe to eat.

To minimize chocolate bloom, ensure the candy is stored in a cool, dry place with stable temperatures, as outlined in Section 2.1.

6. PRODUCT SPECIFICATIONS

| Specification | Detail |
|--------------------|--------------------------------------|
| Brand | Riesen |
| Model (ASIN) | B0018AXELI |
| GTIN | 072799398057 |
| Item Form | Bags (Individually Wrapped) |
| Chocolate Type | Dark |
| Flavor | 30 ounce (Pack of 3) |
| Units | 90 Ounce (Total for 3 packs) |
| Package Dimensions | 17.76 x 9.29 x 3.86 inches; 1 Pounds |
| Manufacturer | Riesen |
| Diet Type | Vegetarian |

7. WARRANTY AND SUPPORT

For questions regarding RIESEN products, including quality concerns or general inquiries, please refer to the contact information provided on the product packaging or visit the official RIESEN website.

Statements regarding dietary supplements have not been evaluated by the FDA and are not intended to diagnose, treat, cure, or prevent any disease or health condition.