

## Manuals+

[Q & A](#) | [Deep Search](#) | [Upload](#)

manuals.plus /

- › [Aleene's](#) /
- › [Aleene's All Purpose Tacky Glue User Manual](#)

### Aleene's 15599

# Aleene's All Purpose Tacky Glue Instruction Manual

Brand: Aleene's | Model: 15599

## 1. PRODUCT OVERVIEW



Aleene's All Purpose Tacky Glue is a versatile adhesive designed for a wide range of crafting and repair applications. This 8-ounce (236ml) bottle contains a clear, flexible, and non-toxic formula that conforms to ASTM D4236 standards, making it a reliable choice for various projects.

It is particularly effective on materials such as fabric, silk, burlap, paper, wood, metal, glass, ceramic, china, styrofoam, and most plastics. The glue dries clear and maintains flexibility, ensuring a clean and durable bond.

### **Key Features:**

- Dries clean and flexible.
- Cleans up fast and easy with water.
- Non-toxic formula, suitable for a variety of surfaces.
- Provides strong adhesion on contact.

## **2. SETUP AND PREPARATION**

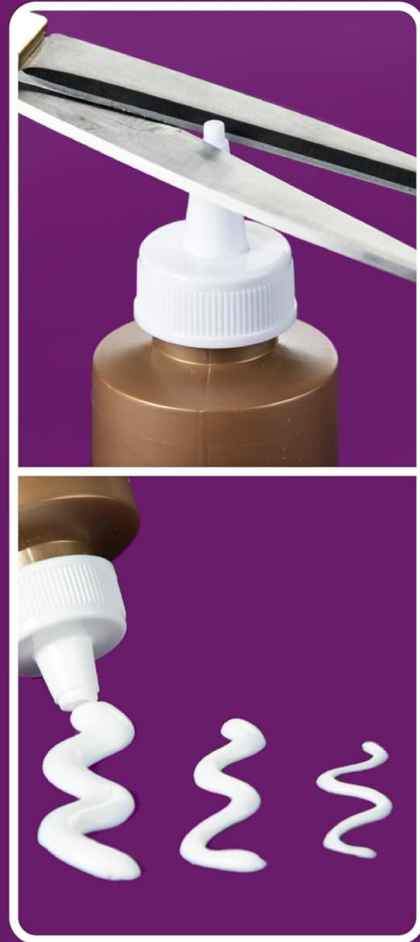
Before applying Aleene's Tacky Glue, ensure your surfaces are clean, dry, and free of dust or debris. This will help achieve the strongest bond.

### **Customizing the Glue Tip:**

The bottle features a customizable glue tip, allowing you to control the flow of adhesive for different application needs. You can adjust the tip for thin, medium, or thick glue lines.

# CUSTOMIZABLE GLUE TIP

THIN  
MEDIUM  
**THICK**



To customize the tip, use a pair of scissors to cut the nozzle at the desired point:

- **Thin Line:** Cut near the top of the tip.
- **Medium Line:** Cut in the middle section of the tip.
- **Thick Line:** Cut closer to the base of the tip for a wider opening.

# BONDS TO MULTIPLE SURFACES



FELT



FOAM



WOOD



CERAMIC



PAPER



AND MORE!

After cutting, gently squeeze the bottle to test the flow and ensure it meets your project requirements.

## 3. APPLICATION INSTRUCTIONS

Aleene's All Purpose Tacky Glue is easy to apply and provides a strong, reliable bond for various materials.

### Compatible Materials:

This glue is suitable for use on a wide array of surfaces, including but not limited to:

- Fabric (silk, burlap)
- Paper and Cardboard
- Wood
- Metal
- Glass
- Ceramic and China
- Styrofoam
- Most Plastics



### General Application Steps:

1. **Apply Glue:** Squeeze a thin, even layer of glue onto one of the surfaces to be bonded. For larger areas, spread the glue evenly using a brush or spreader.
2. **Join Surfaces:** Press the two surfaces together firmly. The glue holds on contact, allowing for immediate positioning.
3. **Drying Time:** Allow the glue to dry completely. Drying time may vary depending on the amount of glue used, humidity, and the materials being bonded. The glue dries clear and flexible.
4. **Curing Time:** For maximum strength, allow 24-72 hours for the glue to fully cure.

### Specific Use Cases:

This glue is excellent for miniatures, paper crafts, and general household repairs. It is also suitable for trimming, decorating, jewelry making, woodworking, and flooring applications.



*Image Description:* A hand is shown holding a broken ceramic statue, with a visible application of Aleene's Tacky Glue on the fractured surface, illustrating its use in repairing ceramic items.

#### 4. CARE AND STORAGE

Proper care and storage will extend the life of your Aleene's All Purpose Tacky Glue.

##### **Cleanup:**

Wet glue cleans up easily with water. For best results, clean tools and surfaces immediately after use before the glue dries.

##### **Storage:**

Store the bottle upright in a cool, dry place with the cap securely closed to prevent the glue from drying out. Ensure the tip is clean before replacing the cap to avoid blockages.

#### 5. TROUBLESHOOTING

Here are solutions to common issues you might encounter:

### **Dried Glue in Nozzle:**

If the nozzle becomes clogged with dried glue, remove the cap and use a thin wire or a paperclip to clear the obstruction. Rinse the cap and nozzle with warm water if necessary, ensuring they are completely dry before reattaching.

### **Glue Not Adhering:**

Ensure that both surfaces are clean, dry, and free of oils or dust. Apply sufficient pressure when joining surfaces. For porous materials, a second application might be necessary after the first layer has partially dried.

## **6. PRODUCT SPECIFICATIONS**

<b>Attribute</b>	<b>Detail</b>
Product Dimensions	2 x 2 x 7.56 inches; 10.24 ounces
Item Model Number	15599
Manufacturer	iLoveToCreate
Item Form	Cream
Material	Plastic, Wood, Glass, Ceramic, Paper, Metal
Compatible Material	Ceramic, Glass, Metal, Paper, Plastic, Wood
Specific Uses For Product	Fabric, Art, School, Poster, Craft, Woodworking, Repair, Flooring, Jewelry, Carpentry, Furniture, Glass, Table Top Coating



*Image Description:* A diagram illustrates the physical dimensions of the Aleene's Tacky Glue bottle, highlighting its height of 7.56 inches for reference.

## 7. SAFETY INFORMATION

Aleene's All Purpose Tacky Glue is formulated with safety in mind.

- **Non-Toxic:** The product is non-toxic and conforms to ASTM D4236 standards.
- **Recommended Age:** Manufacturer recommended age for use is 3 years and up. Adult supervision is advised for young children.
- **Not for Washable Wearables:** This glue is not intended for use on wearables that require washing. For such applications, specialized fabric glues are recommended.

## 8. WARRANTY AND SUPPORT

Specific warranty details for Aleene's All Purpose Tacky Glue are not provided in the product information. For any product-related inquiries or support, please refer to the manufacturer's official resources.

## Additional Resources:

- **Instructions for Use (PDF):** A detailed PDF document with instructions for use is available. You can access it via this [link](#).
- **Manufacturer Website:** For more information, inspiration, and techniques, visit the [iLoveToCreate](#) website or the official Aleene's brand store.