



[Manuals.plus](#) /

› [Cambro](#) /

› Cambro Utility and Service Cart Model CMB-331 Instruction Manual

Cambro CMB-331

Cambro Utility and Service Cart Model CMB-331 Instruction Manual

This manual provides detailed instructions for the assembly, operation, and maintenance of your Cambro Utility and Service Cart, Model CMB-331.

1. INTRODUCTION

The Cambro Utility and Service Cart is designed for versatile use in various environments, offering a robust solution for transporting and storing items. Constructed from durable plastic with aluminum uprights, this cart is built to withstand regular use and support significant weight. Its three-shelf design and smooth-rolling casters enhance functionality and ease of movement.



This image displays the Cambro Utility and Service Cart, a three-shelf mobile unit designed for various transport and storage needs. The cart features a gray finish with sturdy plastic shelves and aluminum uprights, equipped with four swivel casters for mobility.

2. ASSEMBLY INSTRUCTIONS

The Cambro Utility and Service Cart requires assembly upon receipt. Follow these steps carefully to ensure proper construction and stability.

1. **Unpack Components:** Carefully remove all parts from the packaging. Verify that all components are present: three shelves, four aluminum posts, and four swivel casters.
2. **Attach Casters:** Insert the stem of each swivel caster into the designated holes at the bottom of the four aluminum posts. Ensure they are securely seated.
3. **Install Bottom Shelf:** Place the first (bottom) shelf onto the lower set of grooves on the aluminum posts. Apply gentle pressure to snap it into place.
4. **Install Middle Shelf:** Position the second (middle) shelf onto the middle set of grooves on the aluminum posts, ensuring it clicks securely.
5. **Install Top Shelf:** Place the third (top) shelf onto the uppermost set of grooves on the aluminum posts. This shelf also features integrated handles.
6. **Verify Stability:** Once all shelves are in place, gently push down on each corner of the top shelf to ensure all connections are firm and the cart is stable.



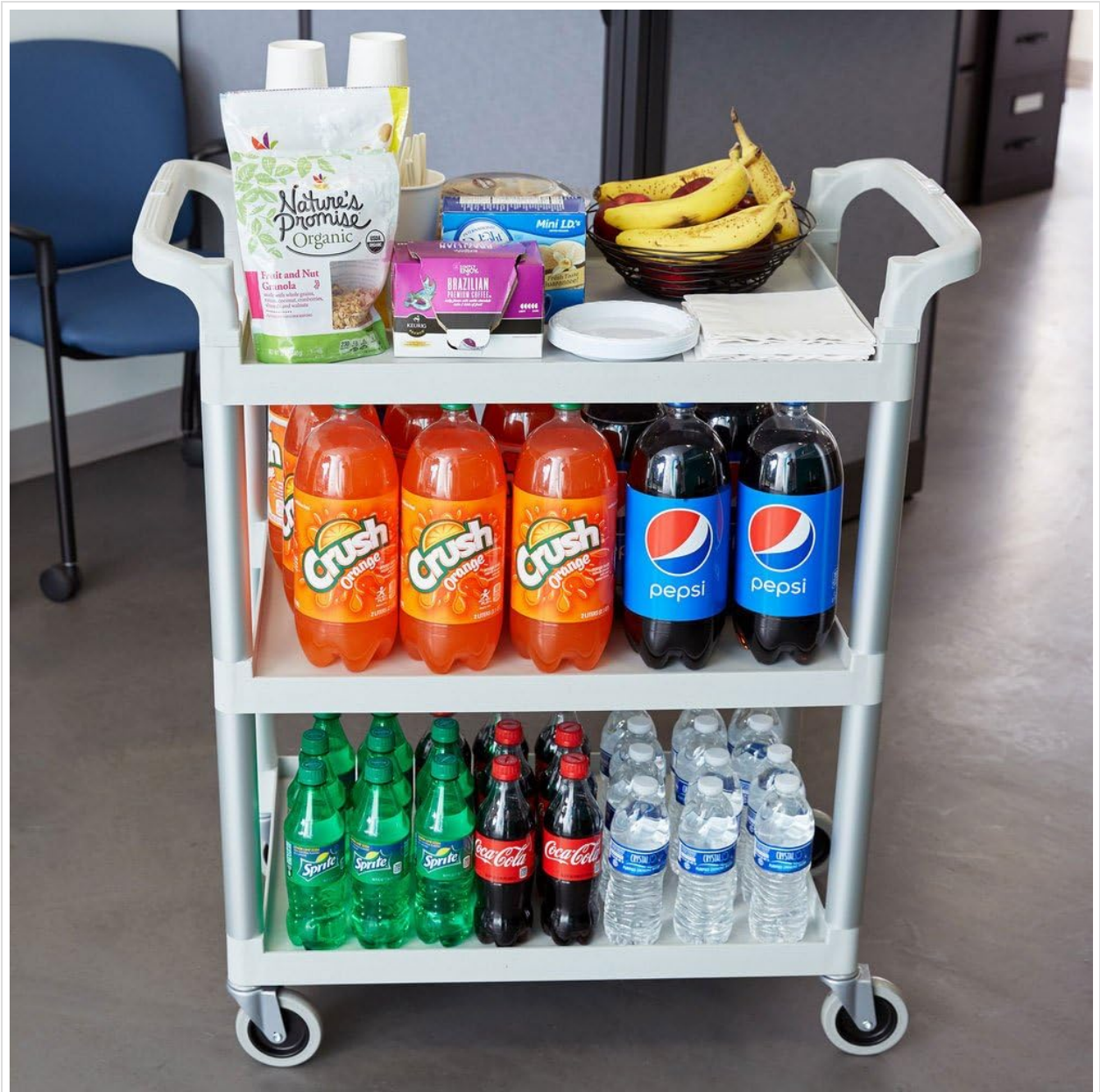
This image provides a direct front view of the assembled Cambro Utility and Service Cart, highlighting its three spacious shelves and the integrated handles. This perspective is useful for visualizing the cart's overall structure and capacity.

3. OPERATING INSTRUCTIONS

The Cambro Utility and Service Cart is designed for ease of use and efficient transport of various items.

- **Loading the Cart:** Distribute items evenly across the three shelves. The cart has a maximum weight capacity of 300 lbs. Avoid overloading to maintain stability and prevent damage.
- **Textured Shelves:** The shelves feature a textured surface designed to help prevent items from sliding during transport.
- **Mobility:** Utilize the double-sided handles for comfortable pushing or pulling. The four swivel casters allow for smooth maneuverability in various directions.

- **Indoor Use:** This cart is recommended for indoor use.



This image illustrates the Cambro Utility and Service Cart in use, showcasing its capacity to hold multiple items such as bottled drinks, snacks, and fruit across its three shelves. It demonstrates the cart's practical application for serving or transporting goods.



A detailed view of one of the cart's swivel caster wheels, emphasizing its design for smooth and quiet mobility. The wheel is made of durable material, designed to prevent floor marks.

4. CARE AND MAINTENANCE

Proper care and maintenance will extend the life and appearance of your Cambro Utility and Service Cart.

- **Cleaning:** Wipe down the plastic shelves and aluminum posts with a damp cloth and mild soap. Rinse thoroughly and dry. Avoid abrasive cleaners or harsh chemicals that could damage the finish.
- **Caster Maintenance:** Periodically check the casters for any debris (hair, lint, etc.) that may impede smooth rolling. Clean as necessary.
- **Storage:** Store the cart in a dry environment when not in use.

5. TROUBLESHOOTING

If you encounter issues with your cart, refer to the following common troubleshooting tips:

- **Cart is Unstable:** Ensure all shelves are fully seated and locked into the grooves on the aluminum posts. Re-check assembly steps.
- **Casters Not Rolling Smoothly:** Inspect casters for debris or damage. Clean any obstructions. If a caster is damaged, it may need replacement.
- **Items Sliding on Shelves:** The shelves are textured to minimize sliding. Ensure the cart is on a level surface and items are not excessively top-heavy or unbalanced.

6. PRODUCT SPECIFICATIONS

Feature	Specification
Brand	Cambro
Model Number	CMB-331
Material	Polyethylene (PE) Plastic, Aluminum
Color	Gray
Number of Shelves	3
Weight Limit	300 Pounds
Product Dimensions	32.87 x 16.26 x 37.99 inches
Item Weight (unloaded)	25.1 pounds (approx. 11.4 kg)
Caster Type	Swivel
Assembly Required	Yes

7. WARRANTY INFORMATION

For specific warranty details regarding your Cambro Utility and Service Cart, please refer to the warranty documentation included with your purchase or visit the official Cambro website. General warranty terms typically cover manufacturing defects under normal use.

8. CUSTOMER SUPPORT

If you have any questions, require assistance with assembly, or need to report a missing or damaged part, please contact Cambro customer support. Contact information can typically be found on the product packaging or the official Cambro website.