

[Manuals.plus](#) /

> [Klein Tools](#) /

> Klein Tools 11-in-1 Screwdriver / Nut Driver Instruction Manual

Klein Tools 32500

Klein Tools 11-in-1 Screwdriver / Nut Driver Instruction Manual

Model: 32500 | Brand: Klein Tools

INTRODUCTION

This manual provides instructions for the safe and effective use of your Klein Tools 11-in-1 Screwdriver / Nut Driver. This versatile multi-tool is designed for professionals and DIY enthusiasts, offering a comprehensive set of bits and nut driver sizes in a single, convenient tool. Its robust construction and ergonomic design ensure durability and comfort during use.

PRODUCT COMPONENTS



The Klein Tools 11-in-1 Screwdriver / Nut Driver, featuring a black Cushion-Grip handle and a clear yellow shaft base.

Handle and Shaft

The tool features a durable Cushion-Grip handle for enhanced comfort and torque. The integrated shaft securely holds interchangeable bits and converts to various nut driver sizes.

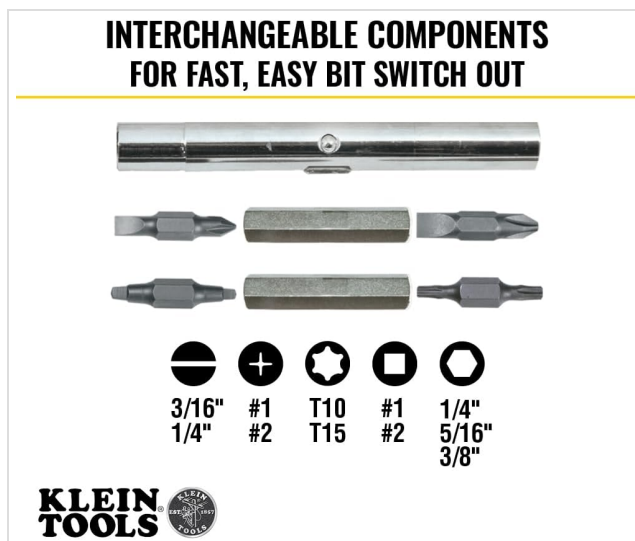


Close-up of the Cushion-Grip handle, designed for greater torque and comfort.

Included Bits and Nut Drivers

The 11-in-1 tool includes a variety of industrial-strength, blast-finish bits designed to provide a firm hold and reduce cam-out.

- **Phillips Bits:** #1, #2
- **Slotted Bits:** 3/16-Inch, 1/4-Inch
- **TORX Bits:** T10, T15
- **Square Recess Bits:** #1, #2
- **Nut Driver Sizes:** 1/4-Inch, 5/16-Inch, 3/8-Inch



Visual representation of the interchangeable bits and nut driver sizes, including Phillips, Slotted, Torx, Square, and various nut driver sizes.

SETUP AND BIT INSTALLATION

Changing Bits

The Klein Tools 11-in-1 Screwdriver features interchangeable components for quick and easy bit changes.

1. To access or change a bit, firmly pull the metal shaft away from the yellow base of the handle.
2. The shaft will separate into two parts, revealing the stored bits and nut driver sizes.
3. Select the desired bit. Bits are double-ended; ensure the correct tip is facing outwards.
4. Insert the chosen bit into the hexagonal opening at the end of the shaft.

5. Reassemble the shaft by pushing the two metal parts back together until they click securely into place.
6. For nut driver functionality, remove the bit and use the hexagonal opening of the shaft directly. The shaft itself offers 1/4-inch and 5/16-inch nut driver sizes. The outer sleeve of the shaft provides a 3/8-inch nut driver size when removed and reversed.



An exploded view demonstrating how the shaft separates to reveal the various interchangeable bits and nut driver components.

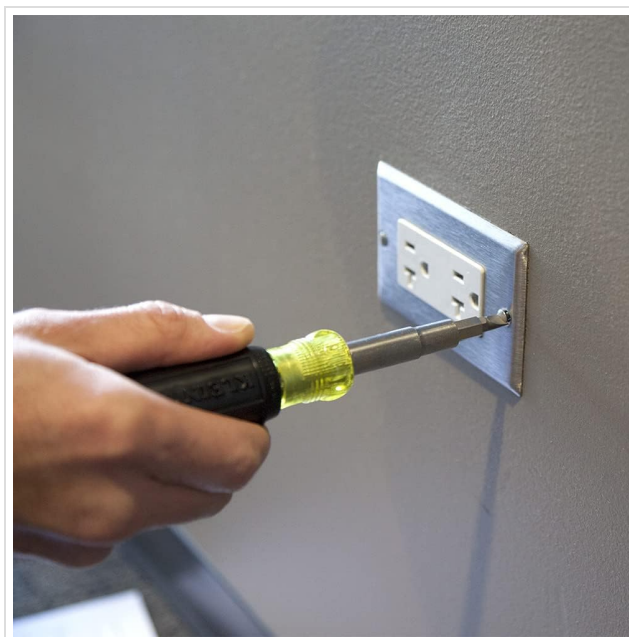
OPERATING INSTRUCTIONS

The Klein Tools 11-in-1 Screwdriver is designed for a wide range of fastening tasks.

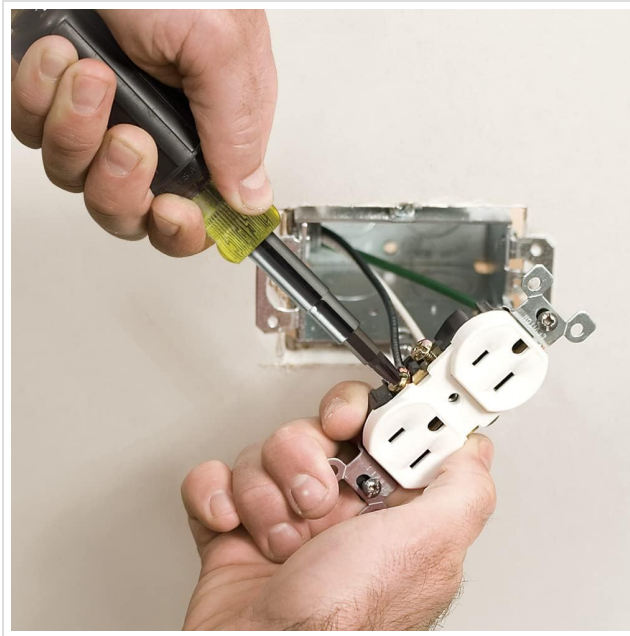
General Use

Select the appropriate bit or nut driver size for your fastener. Insert the tool firmly into the fastener head and apply steady pressure while turning clockwise to tighten or counter-clockwise to loosen. The Cushion-Grip handle provides comfort and allows for greater torque.

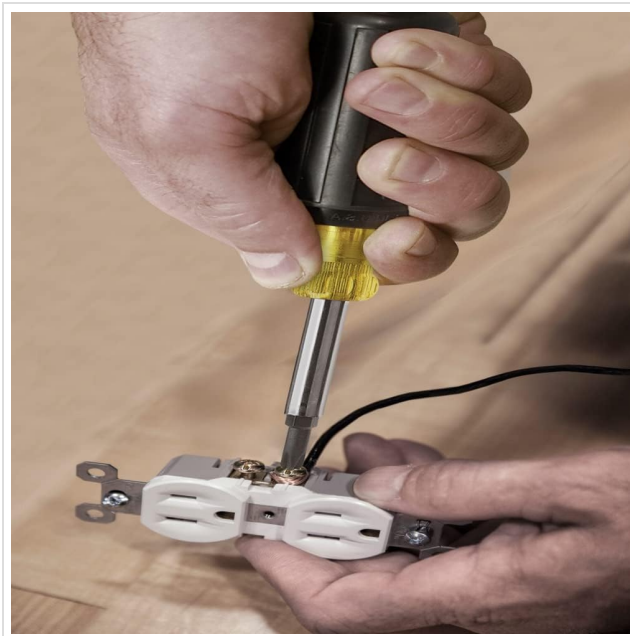
Common Applications



The 11-in-1 screwdriver being used to access a screw in a confined engine compartment, demonstrating its versatility in tight spaces.



The screwdriver in use for electrical work, tightening a screw on an electrical outlet.



The tool being used to assemble a household item, showcasing its utility for various assembly tasks.

MAINTENANCE AND CARE

- Keep the tool clean and free of debris. Wipe down the shaft and bits after each use.
- Store bits securely within the shaft to prevent loss.
- Avoid using the tool as a pry bar or chisel, as this can damage the shaft or bits.
- While the bits have a blast finish to reduce cam-out, regular inspection for wear is recommended. Replace worn bits as needed (replacement bits available: Cat. No. 32482, 32483, 32484, 32485).

TROUBLESHOOTING

Bits not fitting securely:

Ensure the shaft is fully assembled and locked into place. Check bits for any damage or debris that might prevent a secure fit.

Difficulty changing bits:

Apply firm, steady pressure when pulling the shaft apart. If resistance is high, ensure the tool is clean and free of any foreign material.

PRODUCT SPECIFICATIONS

Feature	Detail
Model Number	32500
Dimensions (L x W x H)	10.96 x 2.16 x 1.39 inches
Item Weight	7.7 ounces
Handle Material	Plastic with Cushion-Grip
Bit Material	Industrial-Strength Steel with Blast Finish
Included Bits	#1, #2 Phillips; 3/16", 1/4" Slotted; T10, T15 TORX; #1, #2 Square Recess
Nut Driver Sizes	1/4", 5/16", 3/8"

IMPORTANT SAFETY INFORMATION

WARNING: Cancer and reproductive harm - See www.P65Warnings.ca.gov for more information.

WARNING: NOT INSULATED. WILL NOT PROTECT AGAINST ELECTRICAL SHOCK.

WARRANTY AND SUPPORT

Manufacturer's Warranty

This Klein Tools product is covered by a 1-year manufacturer's warranty. For detailed warranty information and claims, please refer to the official Klein Tools website or contact their customer support.

Customer Support

For further assistance, technical support, or inquiries regarding your Klein Tools 11-in-1 Screwdriver, please visit the official Klein Tools website or contact their customer service department.