

## Manuals+

[Q & A](#) | [Deep Search](#) | [Upload](#)

manuals.plus /

- › [Wahl Professional](#) /
- › [Wahl Professional 5 Star Magic Clip Precision Fade Clipper User Manual](#)

## Wahl Professional WA8451

# Wahl Professional 5 Star Magic Clip Precision Fade Clipper User Manual

Model: WA8451

## INTRODUCTION

---

The Wahl Professional 5 Star Magic Clip is a corded precision fade clipper designed for professional use. It features a powerful V9000 motor and zero-overlap adjustable blades, ideal for creating seamless blends and clean bald fades. This manual provides essential information for the safe and effective operation, maintenance, and care of your clipper.

## SAFETY INFORMATION

---

### **WARNING: To reduce the risk of electric shock, injury, or fire:**

- Read all instructions before using this appliance.
- Do not reach for an appliance that has fallen into water. Unplug immediately.
- Do not use while bathing or in a shower.
- Do not place or store appliance where it can fall or be pulled into a tub or sink. Do not place in or drop into water or other liquid.
- Always unplug this appliance from the electrical outlet immediately after using.
- Unplug this appliance before cleaning, putting on or taking off parts.
- Close supervision is necessary when this appliance is used by, on, or near children or invalids.
- Use this appliance only for its intended household use as described in this manual. Do not use attachments not recommended by the manufacturer.
- Never operate this appliance if it has a damaged cord or plug, if it is not working properly, or if it has been dropped or damaged, or dropped into water. Return the appliance to Wahl Clipper Corporation for examination and repair.
- Keep the cord away from heated surfaces.
- Never drop or insert any object into any opening.
- Do not use outdoors or operate where aerosol (spray) products are being used or where oxygen is being administered.
- Do not use this appliance with a damaged or broken comb, as facial injury may result.
- Before use, ensure blades are properly aligned and free from damage.

## WHAT'S IN THE BOX

## WHAT'S IN THE BOX

---

Your Wahl Professional 5 Star Magic Clip package includes the following items:

- Wahl Professional 5 Star Magic Clip Precision Fade Clipper
- 8 Premium Cutting Guides (1/16" - 1")
- Styling Comb
- Blade Oil
- Cleaning Brush
- Red Blade Guard
- Operating Instructions Manual



*Image: Contents of the Wahl Professional 5 Star Magic Clip package.*

## PRODUCT OVERVIEW

---

The Wahl Professional 5 Star Magic Clip is engineered for precision and durability. It features a robust V9000 electromagnetic motor designed for long-lasting performance and cooler operation. The unique stagger-tooth blade,

combined with a variable thumb taper lever, allows for easy adjustment and seamless blending, making it ideal for fading and on-scalp tapering.



*Image: The Wahl Professional 5 Star Magic Clip Precision Fade Clipper.*



5-STAR  
★★★★★  
SERIES

THE MAGIC IS IN THE BLADE

# Magic Clip

5-STAR BURGUNDY  
CORDED CLIPPER

Equipped with a taper lever for easy fading, blending and tapering. Delivers sharp performance, superior speed and ease of use.



*Image: Close-up view of the Magic Clip's stagger-tooth blade, designed for blending.*



*Image: Features of the Wahl Magic Clip, including ergonomic design and powerful motor.*

## SETUP

1. **Unboxing:** Carefully remove all components from the packaging. Retain packaging for storage or future transport.
2. **Initial Inspection:** Inspect the clipper for any visible damage. Ensure the blades are clean and properly aligned.

3. **Power Connection:** Plug the clipper into a suitable electrical outlet. The clipper is designed for corded operation.
4. **Blade Adjustment (Zero-Overlap):** The Magic Clip features zero-overlap adjustable blades. To adjust, loosen the two screws on the blade set slightly. Carefully align the top blade with the bottom blade, ensuring the cutting edge of the top blade is slightly behind the bottom blade for a closer cut, or aligned for standard cutting. Tighten the screws once adjusted. Refer to the official Wahl instructional videos for detailed visual guidance on zero-gapping.
5. **First Use Oiling:** Before the first use, apply a few drops of Wahl Clipper Oil to the blades as described in the Maintenance section.

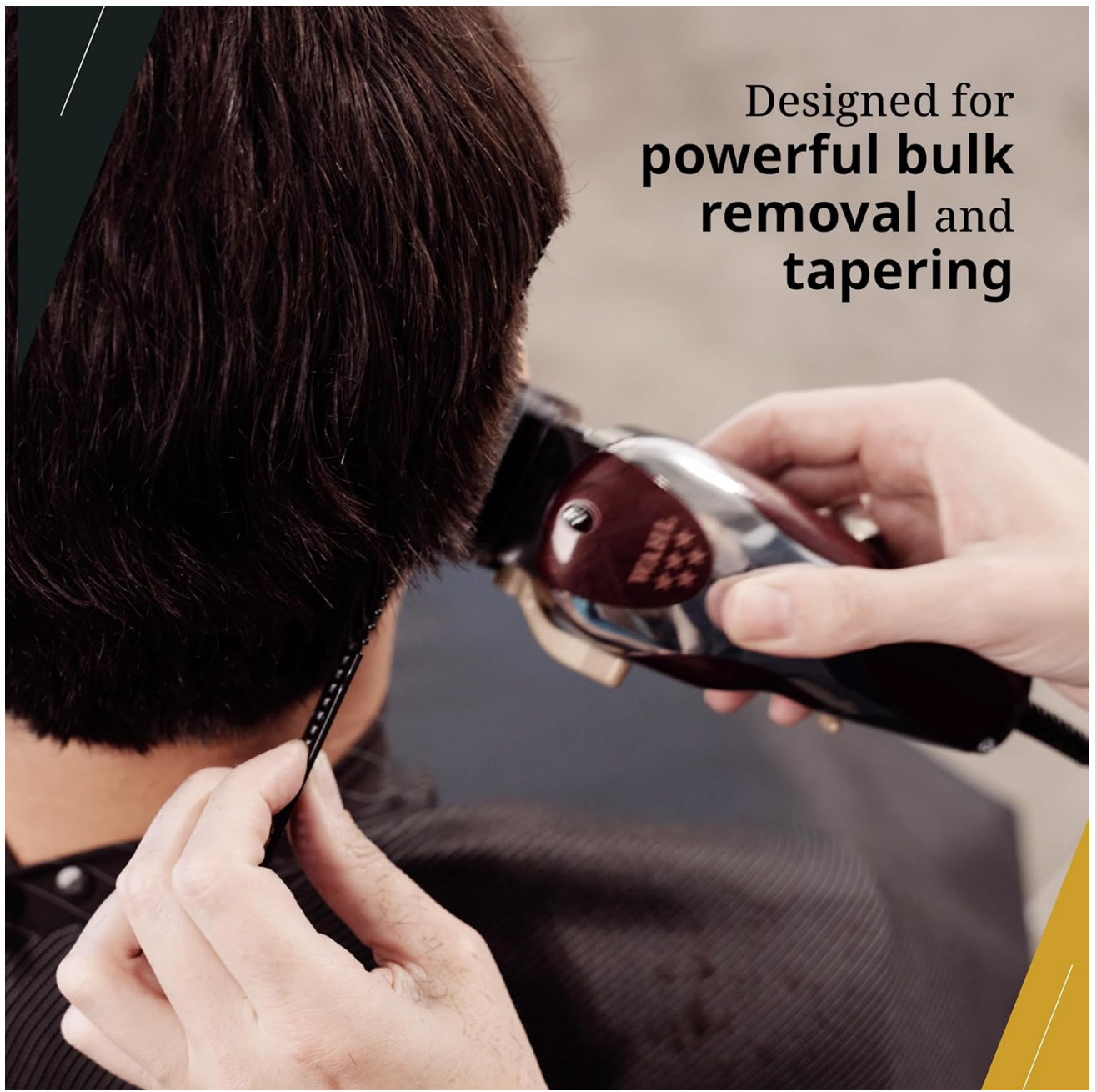
## OPERATING INSTRUCTIONS

---

The Wahl Professional 5 Star Magic Clip is designed for versatile hair cutting, including fading, tapering, and bulk removal. Always ensure hair is clean and dry before cutting.

1. **Attaching Guide Combs:** Select the desired cutting guide (comb) and securely attach it to the clipper blade. Ensure it clicks firmly into place. The included premium cutting guides range from 1/16" to 1".
2. **Using the Taper Lever:** The variable thumb taper lever allows for easy adjustment of cutting length without changing guide combs. Moving the lever up shortens the cut, while moving it down lengthens it. This feature is crucial for blending and fading.
3. **Cutting Techniques:**
  - **Bulk Removal:** For removing significant hair length, use a larger guide comb and cut against the direction of hair growth.
  - **Fading and Blending:** Start with a longer guide comb at the top of the fade area and gradually switch to shorter combs as you move down. Use the taper lever to create smooth transitions between lengths. Use a scooping motion to lift hair away from the scalp as you cut.
  - **Clipper-Over-Comb:** For precise tapering and blending, use a barber comb to hold hair at the desired length and cut over the comb with the clipper.
4. **Power On/Off:** Use the side switch to turn the clipper on or off.

Designed for  
**powerful bulk  
removal** and  
**tapering**



*Image: Demonstrating the Wahl Magic Clip for bulk hair removal.*

# What's in The Box



Professional Corded Clipper with Adjustable Taper Lever

8 Premium Cutting Guides (1/16" - 1")

Styling Comb

Power Supply

Oil

Cleaning Brush

Instructions

Red Blade Guard

*Image: The Wahl Magic Clip in action for seamless blending and fading.*

## Official Product Demonstration Video

Your browser does not support the video tag.

*Video: Official product video demonstrating the features and professional use of the Wahl Professional 5-Star Magic Clip Precision Fade Clipper.*

## MAINTENANCE

Proper maintenance ensures the longevity and optimal performance of your Wahl Magic Clip.

- Cleaning Blades:** After each use, brush loose hair from the blades using the provided cleaning brush. For thorough cleaning, you may use a clipper cleaning spray.
- Oiling Blades:** To maintain cutting efficiency and prevent rust, apply 2-3 drops of Wahl Clipper Oil to the teeth and sides of the blades after every few haircuts or as needed. Turn the clipper on for a few seconds to allow the oil to distribute evenly. Wipe off any excess oil.
- Cord Care:** Avoid twisting or wrapping the cord tightly around the clipper. Store the cord loosely to prevent

damage.

4. **Storage:** Store the clipper in a dry, cool place, away from direct sunlight and moisture. Use the red blade guard to protect the blades when not in use.

## TROUBLESHOOTING

Problem	Possible Cause	Solution
Clipper does not turn on.	No power, damaged cord/plug.	Check power outlet. Inspect cord and plug for damage. If damaged, do not use and contact customer support.
Blades pull hair or cut poorly.	Blades are dull, dirty, or not oiled. Blades are misaligned.	Clean and oil blades. Re-align blades (refer to Setup section). If blades are dull, they may need sharpening or replacement.
Clipper is excessively noisy or vibrates.	Internal mechanism issue, loose screws, or debris.	Ensure all screws on the blade set are tightened. Clean blades thoroughly. If the issue persists, contact customer support.
Clipper overheats.	Lack of lubrication, prolonged use, or debris.	Ensure blades are well-oiled. Clean blades to remove any hair buildup. Allow the clipper to cool down between uses.

## SPECIFICATIONS

Feature	Detail
Brand	Wahl Professional
Model Number	WA8451
Motor Type	V9000 Electromagnetic Motor
Blade Type	Precision Fade Blade with Zero Overlap Adjustment
Power Source	Corded Electric
Product Dimensions	8 x 2.75 x 3 inches
Item Weight	11.2 ounces
Color	Black, Burgundy (Chrome finish)
Included Accessories	8 Cutting Guides, Styling Comb, Oil, Cleaning Brush, Blade Guard

## WARRANTY AND SUPPORT

Wahl Professional products are manufactured to the highest standards and are backed by a limited warranty against defects in materials and workmanship. For specific warranty details, including duration and coverage, please refer to the warranty card included with your product or visit the official Wahl Professional website.

For technical support, replacement parts, or service inquiries, please contact Wahl Professional Customer Service:

- **Website:** [www.wahlpro.com](http://www.wahlpro.com)
- **Phone:** Refer to your product packaging for regional contact numbers.

When contacting support, please have your model number (WA8451) and purchase date available.

---

© 2025 Wahl Clipper Corporation. All rights reserved.