



Manuals.plus /

- › Faria Beede Instruments /
- › Faria Beede Instruments Faria Dress White 2" Fuel Level Gauge (E-1/2-F) User Manual

Faria Beede Instruments 13101

Faria Beede Instruments Fuel Level Gauge User Manual

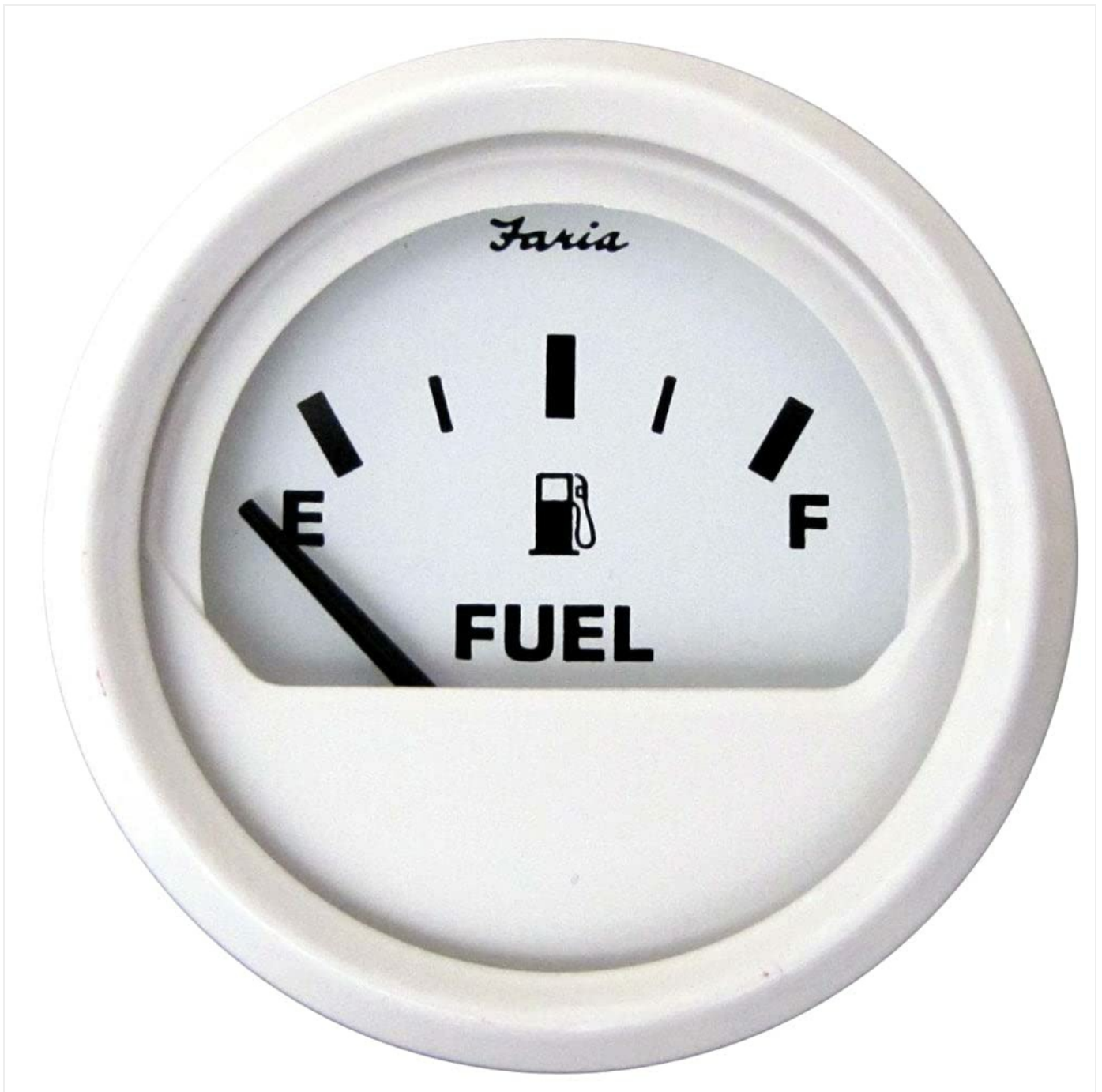
Model: 13101

INTRODUCTION

This manual provides essential information for the proper installation, operation, and maintenance of your Faria Beede Instruments Dress White 2" Fuel Level Gauge (E-1/2-F). This gauge is designed to accurately display the fuel level in your tank, ensuring reliable performance for marine and automotive applications.

The fuel level gauge operates by measuring the resistance from a compatible fuel level sending unit. As the fuel level changes, the sending unit's resistance varies, which in turn causes the gauge's needle to deflect, indicating the current fuel level from Empty (E) to Full (F).

PRODUCT OVERVIEW



This image displays the Faria Dress White 2-inch Fuel Level Gauge. The gauge features a clean white face with clear black markings. The left side is marked 'E' for Empty, and the right side is marked 'F' for Full. A fuel pump icon is centrally located above the word 'FUEL'. The needle is currently indicating an empty fuel level. The gauge has a 2-inch diameter, designed for a 2.0625-inch (53mm) hole size.

SETUP AND INSTALLATION

Proper installation is crucial for accurate readings and long-term performance. It is recommended that installation be performed by a qualified technician.

Tools and Materials Required:

- Drill with appropriate hole saw (2.0625" or 53mm)
- Wire strippers/crimpers
- Electrical tape or heat shrink tubing
- Appropriate gauge wiring (18 AWG recommended)
- Compatible fuel level sending unit (if not already installed)
- Multimeter for testing (optional, but recommended)

Installation Steps:

1. **Safety First:** Disconnect the vehicle's or vessel's battery before beginning any electrical work.
2. **Mounting Location:** Choose a flat, secure surface on your dashboard or panel. Ensure there is sufficient clearance behind the panel for the gauge body and wiring.
3. **Cut Hole:** Using a 2.0625" (53mm) hole saw, carefully cut the mounting hole. Deburr the edges if necessary.
4. **Insert Gauge:** Insert the gauge into the mounting hole from the front of the panel.
5. **Secure Gauge:** Use the supplied mounting bracket and nuts to secure the gauge firmly from the rear of the panel. Do not overtighten.
6. **Wiring Connections:**
 - **Power (Ignition):** Connect the gauge's positive terminal (usually marked 'I' or '+') to a switched 12V DC power source (e.g., ignition circuit). Use an inline fuse for protection (not supplied, typically 1-2A).
 - **Ground:** Connect the gauge's negative terminal (usually marked 'G' or '-') to a reliable chassis or battery ground point. Ensure a clean, corrosion-free connection.
 - **Sender:** Connect the gauge's sender terminal (usually marked 'S') to the signal wire from your fuel level sending unit. Ensure the sending unit is compatible with the gauge's resistance range (typically 240-33 ohms for E-1/2-F).
 - **Illumination (Optional):** If your gauge has an illumination terminal, connect it to your dashboard lighting circuit for night visibility.
7. **Verify Connections:** Double-check all wiring connections for tightness and correct polarity.
8. **Reconnect Power:** Reconnect the battery.
9. **Test Operation:** Turn on the ignition and observe the gauge. The needle should move to indicate the current fuel level.

OPERATING INSTRUCTIONS

Once properly installed, the Faria Beede Fuel Level Gauge operates automatically when the ignition is on. The gauge provides a continuous reading of your fuel tank's contents.

Reading the Gauge:

- The needle will point to 'E' when the fuel tank is empty.
- The needle will point to 'F' when the fuel tank is full.
- Intermediate markings indicate approximate fuel levels between empty and full.
- Allow a few moments for the needle to stabilize after significant changes in fuel level or vehicle/vessel movement.

MAINTENANCE

The Faria Beede Fuel Level Gauge is designed for durability and requires minimal maintenance. Regular checks can help ensure its longevity and accurate performance.

Cleaning:

- Wipe the gauge face with a soft, damp cloth.
- Do not use abrasive cleaners, solvents, or harsh chemicals, as these can damage the lens or finish.

Periodic Checks:

- Inspect all wiring connections periodically to ensure they are secure and free from corrosion.
- Check the fuel level sending unit for proper operation and any signs of damage or wear.

- Ensure the gauge is securely mounted and has not come loose.

TROUBLESHOOTING

If your fuel level gauge is not functioning correctly, refer to the following common issues and their potential solutions:

Problem	Possible Cause	Solution
Gauge reads full when tank is empty, or empty when tank is full.	Incorrect wiring (sender and ground reversed), incompatible sending unit, faulty sending unit.	Verify sender and ground wire connections. Ensure sending unit resistance range matches gauge (E-1/2-F typically 240-33 ohms). Test sending unit with a multimeter.
Gauge needle does not move or is stuck.	No power to gauge, poor ground connection, open circuit in sender wire, faulty sending unit, faulty gauge.	Check power supply to gauge (12V DC). Verify ground connection. Inspect sender wire for breaks or loose connections. Test sending unit. If all else fails, the gauge may be faulty.
Inaccurate or erratic readings.	Poor electrical connections, intermittent fault in sender unit, electrical interference, incorrect sender unit calibration.	Clean and tighten all electrical connections. Inspect sender unit for mechanical issues (e.g., float sticking). Ensure proper grounding. Consult a professional if interference is suspected.
Gauge illumination not working.	Blown bulb (if applicable), no power to illumination circuit, faulty wiring.	Check illumination wire connection and power source. Replace bulb if accessible and faulty.

If troubleshooting steps do not resolve the issue, contact Faria Beede Instruments customer support or a qualified marine/automotive electrician.

SPECIFICATIONS

- **Brand:** Faria Beede Instruments
- **Model:** 13101
- **Product Type:** Fuel Level Gauge
- **Gauge Diameter:** 2 inches
- **Hole Size Required:** 2.0625 inches (53mm)
- **Resistance Range:** E-1/2-F (typically 240 ohms Empty to 33 ohms Full)
- **Power Requirement:** 12V DC
- **UPC:** 759266131019
- **Package Dimensions:** 4.02 x 3.7 x 3.46 inches
- **Weight:** 4.16 ounces

WARRANTY AND SUPPORT

Specific warranty terms and conditions for the Faria Beede Instruments Fuel Level Gauge are provided by the manufacturer. Please refer to the documentation included with your purchase or visit the official Faria Beede Instruments website for detailed warranty information.

For technical support, replacement parts, or further assistance, please contact Faria Beede Instruments customer service directly. Contact information can typically be found on their official website or on the product packaging.

Note: Unauthorized modifications or improper installation may void the product warranty.

