

Wera 05052490001

Wera Hexagon 887/4 R Ringmagnet Rapidaptor Universal Bit Holder 1/4"

Instruction Manual

INTRODUCTION

This manual provides essential instructions for the safe and effective use of your Wera Hexagon 887/4 R Ringmagnet Rapidaptor Universal Bit Holder 1/4". Please read this manual thoroughly before initial use and retain it for future reference. This bit holder is designed for use with 1/4" hexagon drive bits and features a ring magnet for secure screw retention and a Rapidaptor function for quick bit changes.

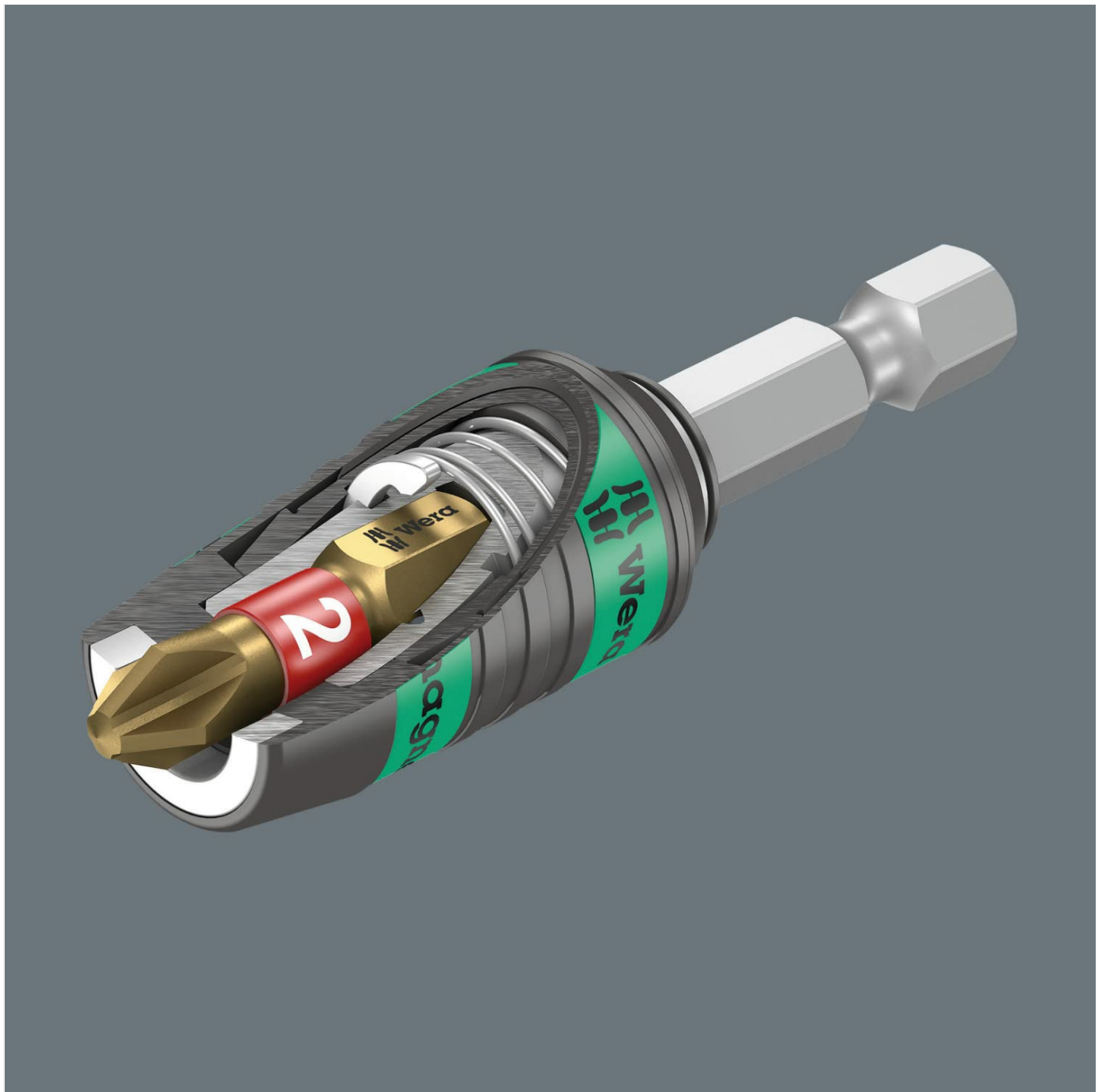


Figure 1: Internal mechanism of the Wera 887/4 R Ringmagnet Rapidaptor.

SETUP

Inserting a Bit

1. Ensure the bit holder is clean and free from debris.
2. Insert the 1/4" hexagon drive bit into the front opening of the bit holder.
3. Push the bit firmly until it clicks into place. The Rapidaptor mechanism automatically locks the bit securely.



Figure 2: Inserting a bit into the holder.

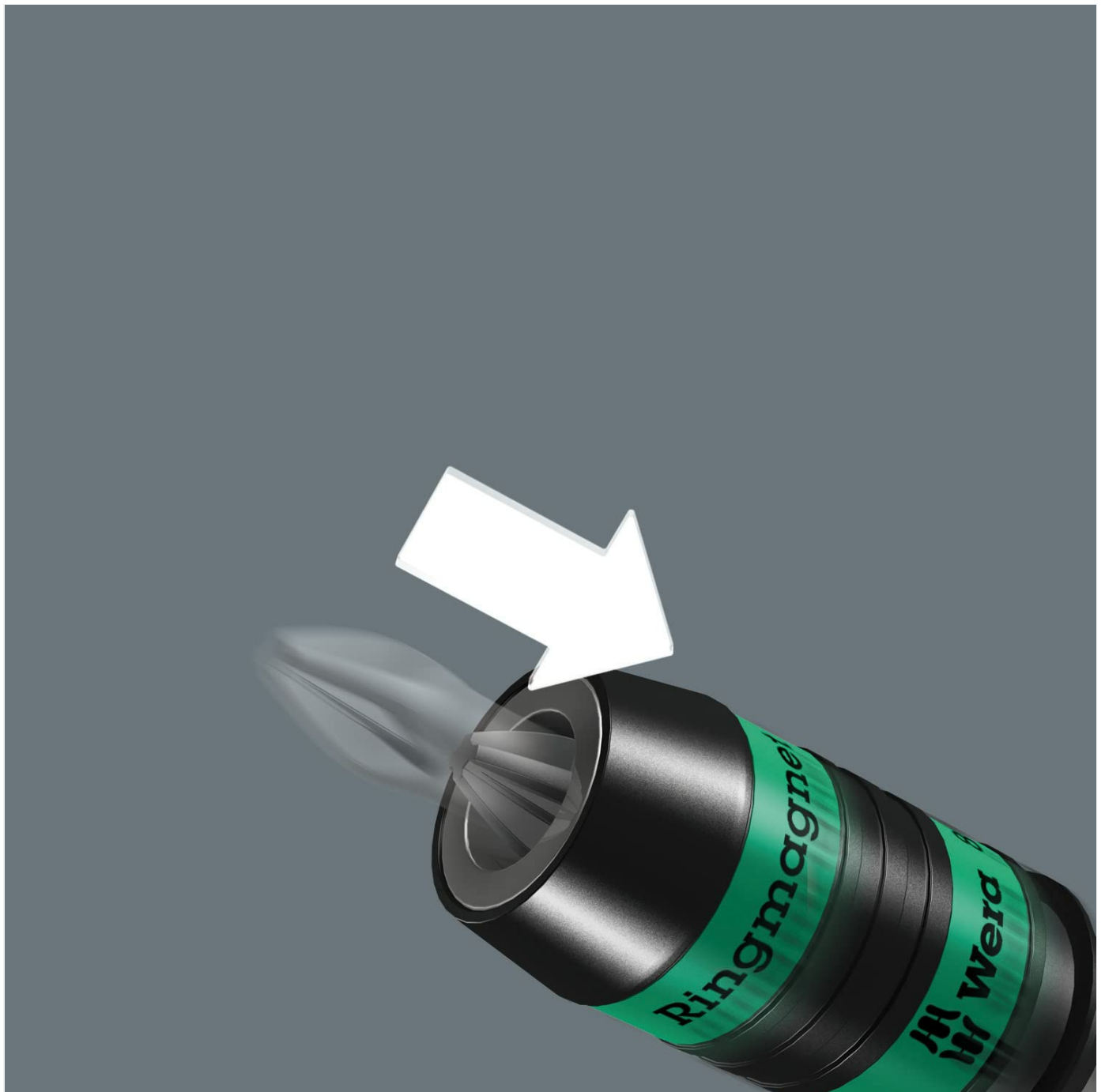


Figure 3: Visual representation of bit insertion.

Removing a Bit

1. To release the bit, push the collar of the bit holder forward.
2. The bit will be ejected slightly, allowing for easy removal.

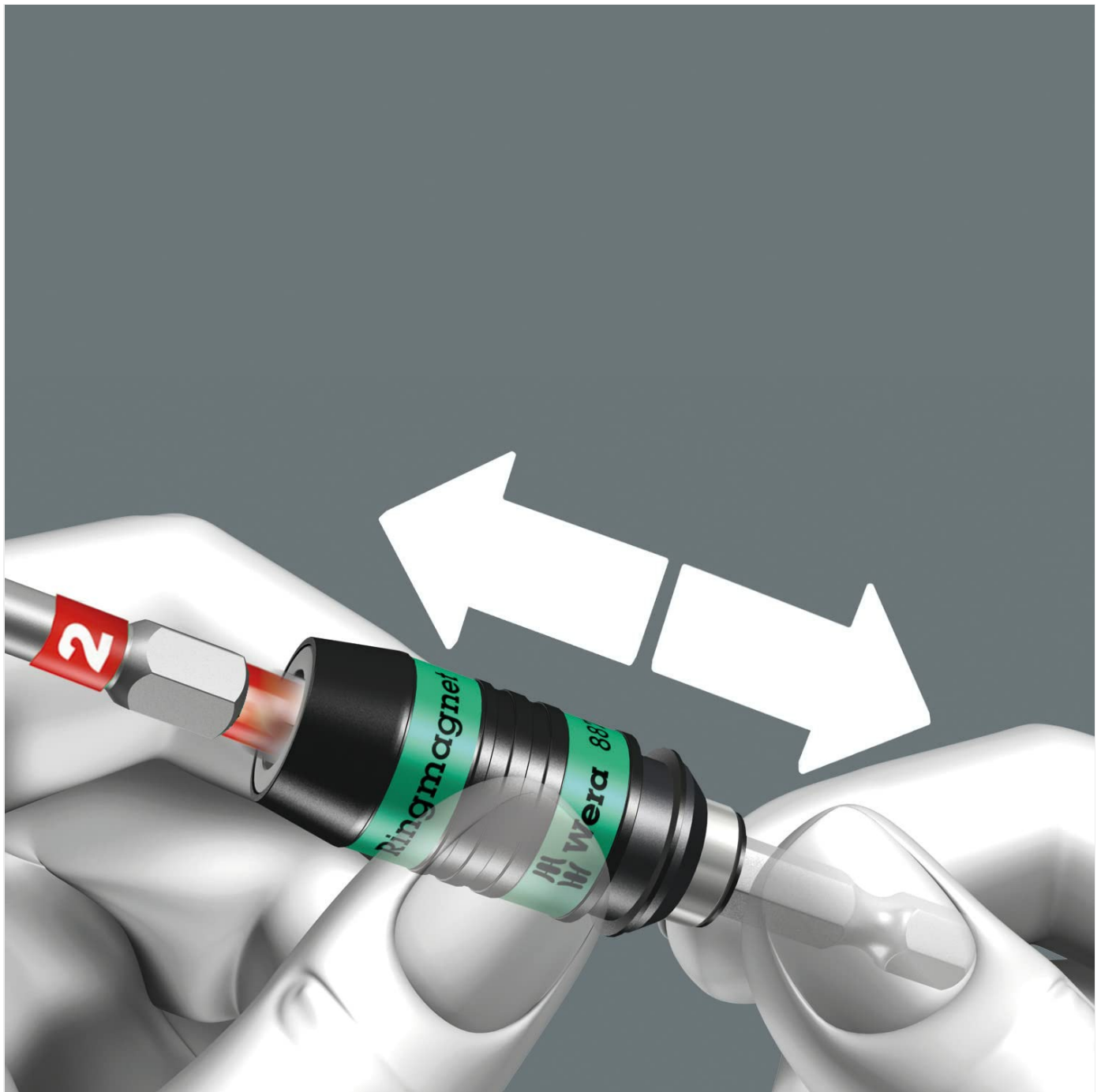


Figure 4: Releasing a bit from the holder.

Attaching to a Power Tool

Insert the hexagonal shank of the bit holder into the chuck of your power drill or impact driver. Ensure it is securely tightened according to your tool's instructions.



Figure 5: Bit holder attached to a power tool.

OPERATING INSTRUCTIONS

Using the Ring Magnet

The Wera 887/4 R features a strong ring magnet that holds screws firmly to the bit, preventing them from falling off during positioning and driving. This allows for one-handed operation and improved precision.



Figure 6: Screw held securely by the ring magnet.

Driving Screws

1. Attach the desired screw to the bit, utilizing the ring magnet for retention.
2. Position the screw and bit holder assembly onto the workpiece.
3. Activate your power tool to drive the screw. The free-spinning sleeve allows for stable guidance during the driving process.

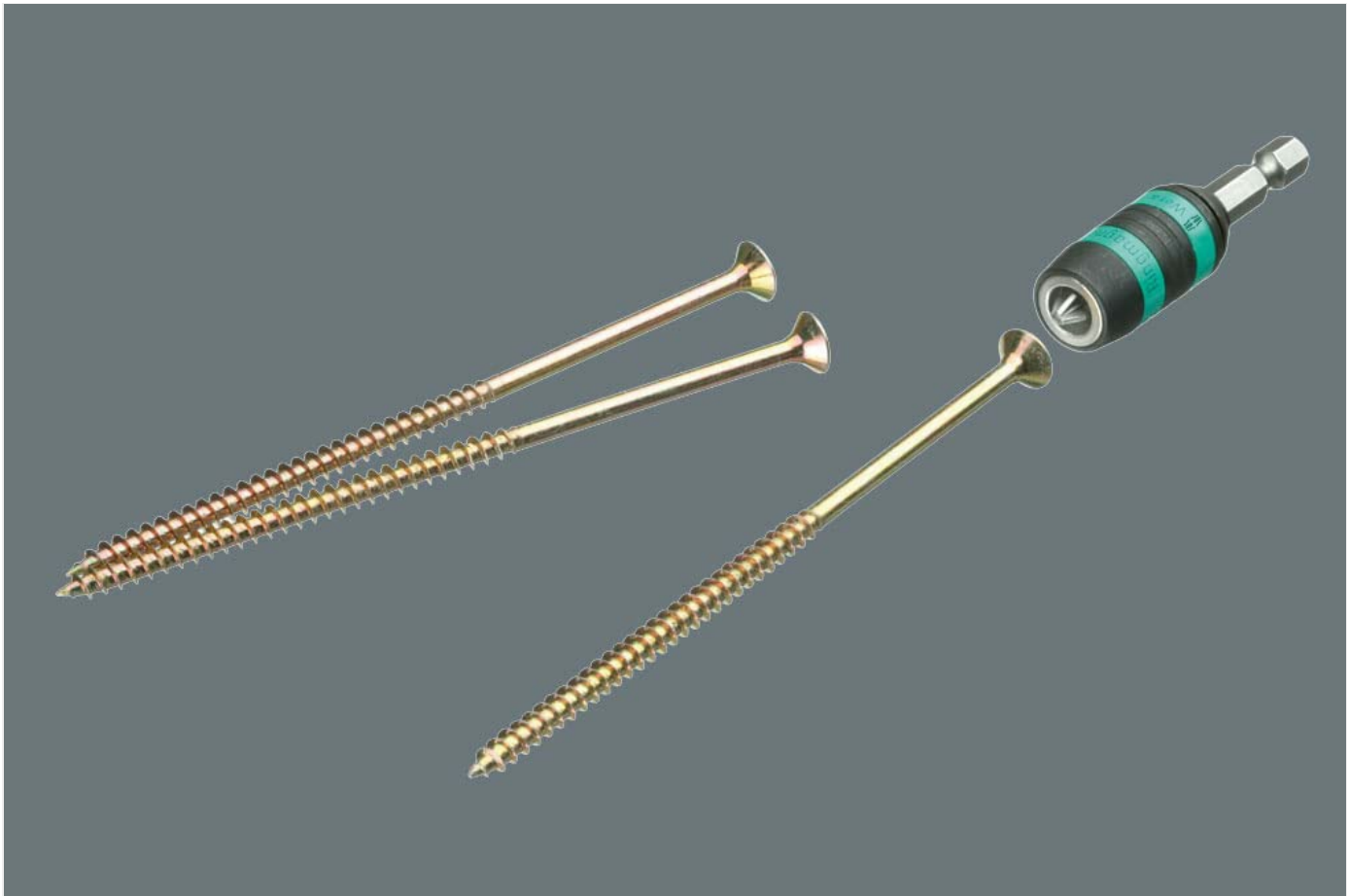


Figure 7: Driving a screw into a workpiece.

MAINTENANCE

- **Cleaning:** Regularly wipe the bit holder with a clean, dry cloth to remove dust, dirt, and metal shavings. Avoid using harsh chemicals or abrasive materials.
- **Lubrication:** The internal mechanism is designed for maintenance-free operation. Do not attempt to lubricate or disassemble the unit, as this may affect its performance and void any warranty.
- **Storage:** Store the bit holder in a dry environment, away from excessive moisture and extreme temperatures, to prevent corrosion and maintain magnetic strength.

TROUBLESHOOTING

- **Bit not locking securely:** Ensure the bit is fully inserted until it clicks. Check for any debris obstructing the locking mechanism.
- **Difficulty removing bit:** Ensure the collar is pushed fully forward. If the bit is stuck, gently twist it while pushing the collar.
- **Screws not holding to magnet:** Verify that the screws are made of a ferromagnetic material. Clean any metal shavings or dirt from the ring magnet.
- **Excessive wobble:** Ensure the bit holder is securely fastened in the power tool's chuck and that the bit itself is not worn or damaged.

SPECIFICATIONS

Item Model Number	05052490001
Product Dimensions	3.39 x 0.94 x 0.94 inches

Item Weight	1.76 ounces
Brand	Wera
Finish Type	Brushed
Number of Pieces	1
Drive System	External Hex
Drive Bit Shank Style	Hex

WARRANTY INFORMATION



This Wera product is covered by the manufacturer's standard warranty against defects in materials and workmanship. For specific warranty terms and conditions, please refer to the documentation included with your purchase or visit the official Wera website.





CUSTOMER SUPPORT

For technical assistance, product inquiries, or to report any issues, please contact Wera customer support. Contact details can typically be found on the official Wera website or on your product packaging.



Related Documents - 05052490001

	<p>Wera 8009 Zyklöp Pocket Ratchet: Features and Specifications</p> <p>Explore the Wera 8009 Zyklöp Pocket ratchet, a compact tool with a magnetic drive, integrated 12-bit magazine, and a freely pivoting head lockable at 0°, 15°, and 90° positions. Includes safety guidelines.</p>
	<p>Wera Kraftform Plus VDE 160 i Screwdriver Safety Information and Product Details</p> <p>Essential safety guidelines and product information for the Wera Kraftform Plus VDE 160 i screwdriver, including user restrictions, child safety, and choking hazard warnings. Details from Wera Werkzeuge GmbH.</p>

 <p>Wera Click-Torque Lock A 6 Torque Wrench. Adjustable, 2.5-25 Nm. Detailed information on the Wera Click-Torque Lock A 6 torque wrench. Features include adjustable torque, Torque Lock function for loosening, 1/4" bit mounting, audible and tactile signals, and precision according to DIN EN ISO 6789-1:2017-07.</p>	<p>Wera Click-Torque Lock A 6 Torque Wrench: Adjustable, 2.5-25 Nm</p> <p>Detailed information on the Wera Click-Torque Lock A 6 torque wrench. Features include adjustable torque, Torque Lock function for loosening, 1/4" bit mounting, audible and tactile signals, and precision according to DIN EN ISO 6789-1:2017-07.</p>
 <p>Momentværktøj. Til kontrollet spænding. Udforsk Wera's omfattende sortiment af momentværktøj, herunder momentskruetrækkere, momentindikatorer og momentnøgler. Sikrer præcis og pålidelig spænding for professionelle anvendelser.</p>	<p>Wera Momentværktøj: Præcision og Pålidelighed for Professionelle</p> <p>Udforsk Wera's omfattende sortiment af momentværktøj, herunder momentskruetrækkere, momentindikatorer og momentnøgler. Sikrer præcis og pålidelig spænding for professionelle anvendelser.</p>
 <p>Wera 887/4 RR Rapidaptor Universal Bit Holder with Ring Magnet. 1/4" x 57 mm. Discover the Wera 887/4 RR Rapidaptor Universal Bit Holder. Features include a ring magnet for secure screw holding, one-hand operation, and rapid bit changes. Ideal for 1/4" hexagon drive bits.</p>	<p>Wera 887/4 RR Rapidaptor Universal Bit Holder with Ring Magnet 1/4" x 57 mm</p> <p>Discover the Wera 887/4 RR Rapidaptor Universal Bit Holder. Features include a ring magnet for secure screw holding, one-hand operation, and rapid bit changes. Ideal for 1/4" hexagon drive bits.</p>
 <p>Wera Bit-Check 7 TX Universal 1 SB - 7 Piece Bit Set with Holder. Discover the Wera Bit-Check 7 TX Universal 1 SB, a compact 7-piece bit set featuring tough TORX® bits and a universal holder with a stainless steel sleeve and magnet. Ideal for organized tool storage and versatile use with power tools.</p>	<p>Wera Bit-Check 7 TX Universal 1 SB - 7 Piece Bit Set with Holder</p> <p>Discover the Wera Bit-Check 7 TX Universal 1 SB, a compact 7-piece bit set featuring tough TORX® bits and a universal holder with a stainless steel sleeve and magnet. Ideal for organized tool storage and versatile use with power tools.</p>