

## Barkan 3300.B

# Barkan Full Motion TV Wall Mount

## MODEL 3300.B INSTRUCTION MANUAL

### Introduction

---

This manual provides detailed instructions for the safe and proper installation and operation of your Barkan Full Motion TV Wall Mount, Model 3300.B. This articulating wall mount is designed for 13-65 inch flat and curved screen televisions, supporting a maximum weight of 88 lbs (40 kg). Please read all instructions carefully before beginning installation.

### Safety Information

---

- **Weight Capacity:** Do not exceed the maximum weight capacity of 88 lbs (40 kg). Exceeding this limit may result in serious injury or property damage.
- **Screen Size:** This mount is compatible with 13-65 inch screens. Ensure your TV's VESA pattern and weight are within the specified limits.
- **Wall Type:** Install the mount only on solid concrete walls, concrete block walls, or wood stud walls **DO NOT** install on drywall, gypsum, or plaster without wood studs.
- **Professional Installation:** If you are unsure about the installation process or wall type, consult a qualified professional.
- **Tools:** Use appropriate tools and wear safety glasses during installation.
- **Children:** Keep children away from the installation area.
- **Check Connections:** Regularly check that all screws and connections are secure.

### Package Contents

---

Verify that all components are present before installation. If any parts are missing or damaged, do not proceed with installation and contact Barkan support.

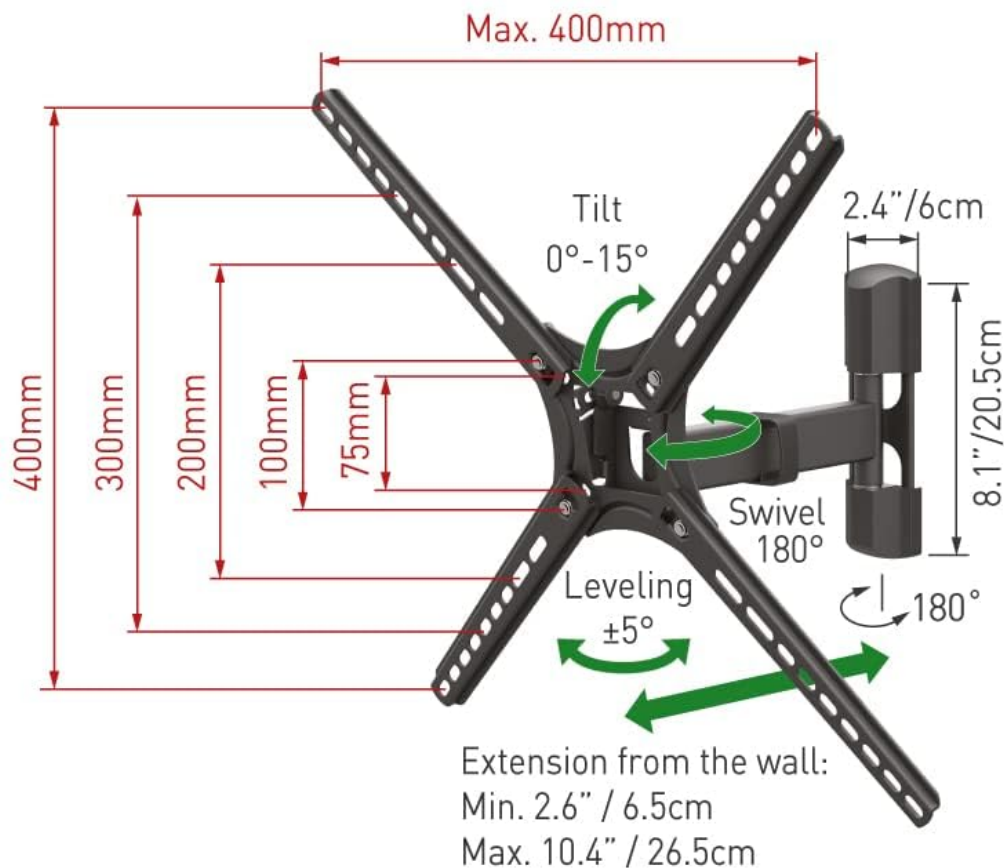
- TV Wall Mount Assembly
- Assembly Instructions (this document)
- Hardware Kit (various screws, anchors, washers, spacers)
- Safety Instructions



Image: Barkan Full Motion TV Wall Mount and its retail packaging.

# Specifications

**Backscreen connection**  
**75x75 – 400X400 VESA and non VESA**



All rights reserved. Specifications and colors are subject to change without prior notice, and may differ slightly from what is shown. Actual product may vary due to constant product enhancement. Also compatible with smaller or larger screen sizes, where their specifications comply to the mount's loading capacity and VESA back hole pattern.

Image: Detailed view of the Barkan Hardware Kit, including wall screws, wall anchors, M8, M6, M4 TV mounting screws, metal washers, and plastic spacers.

## Specifications

Model Number	3300.B
Screen Size Compatibility	13 - 65 inches
Maximum Load Capacity	88 lbs (40 kg)
VESA Compatibility	75x75mm to 400x400mm
Mounting Type	Wall Mount
Movement Type	Articulating (Full Motion)

Tilt Angle	0° to 15°
Swivel Angle	180°
Screen Leveling	±5°
Extension from Wall	Min. 2.6" (6.5 cm) / Max. 10.4" (26.5 cm)
Product Dimensions	10.83 x 7.17 x 2.36 inches (Mount only)
Item Weight	5.1 pounds
Material	Metal
Color	Black



Image: Diagram illustrating the mount's full motion capabilities, including tilt, swivel, leveling, and extension from the wall, with key dimensions.

# Backscreen connection positioning options

All TV backscreen connections are in millimeters (Width x Height).

There are a few sizes of TV plates available.

The backscreen connections in position 1 are included in some of the different TV plates, according to their size, and do not require the use of the 4 adapters (marked in blue).

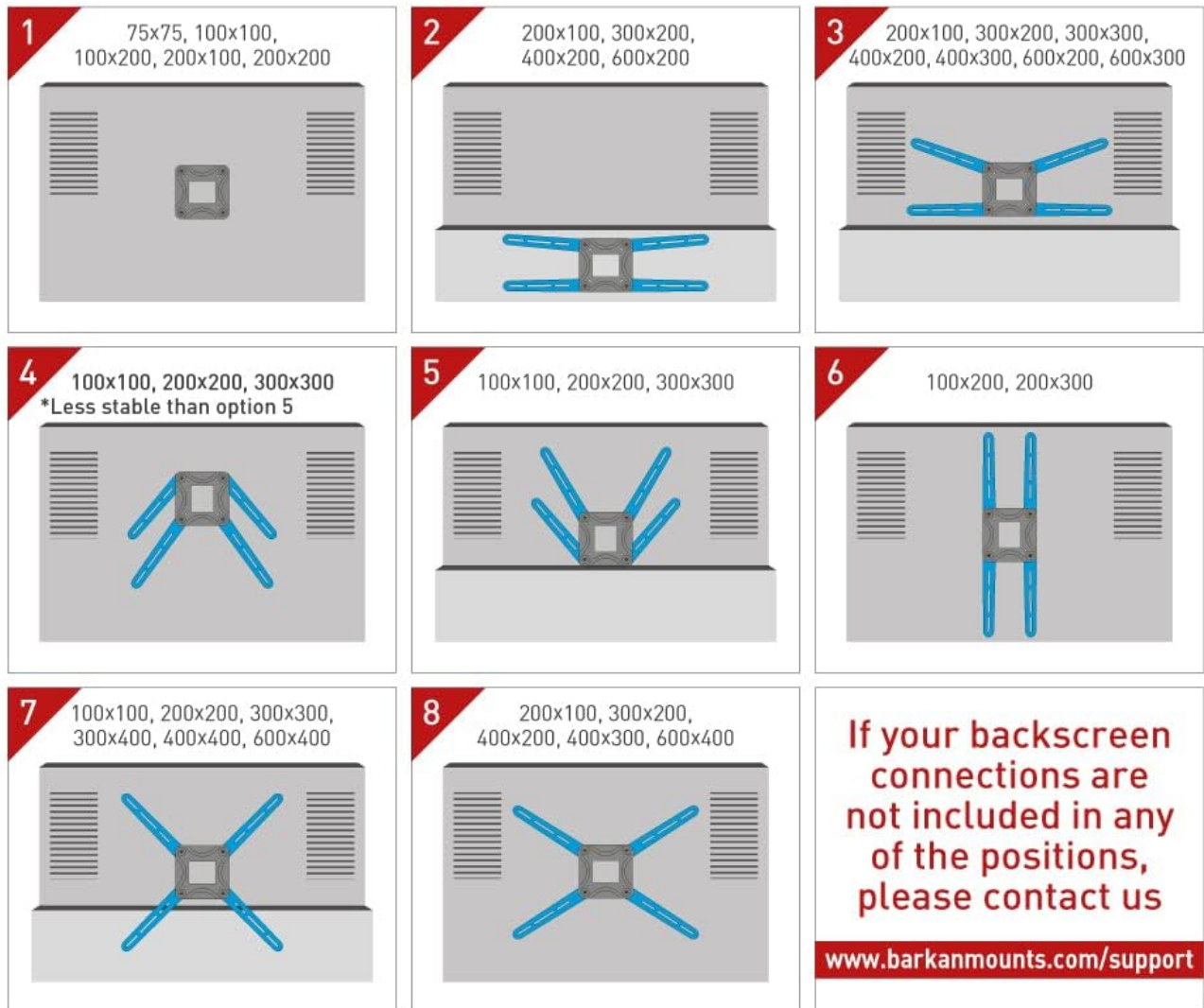


Image: Detailed specifications and a diagram showing VESA backscreen connection points and mount dimensions.

## Setup and Installation


### Required Tools

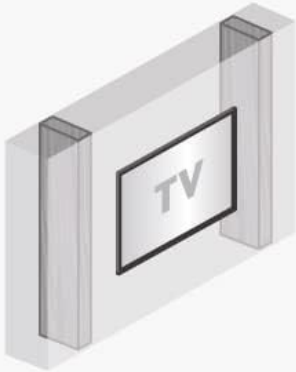
- Drill (1/4" - 6mm, 3/8" - 10mm bits for concrete/wood, 5/32" - 4mm for wood)
- Level
- Safety Glasses
- Stud Finder (for wood stud installation)



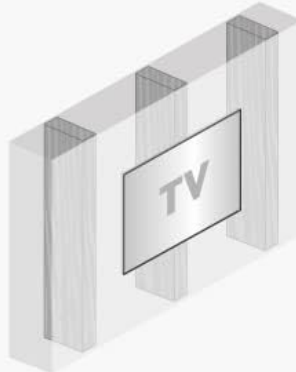
Included in the packaging are **assembly instructions, warnings and safety instructions**. If they are missing, you are required to download them from our website and to assemble precisely according to them.

## Wall compatibility

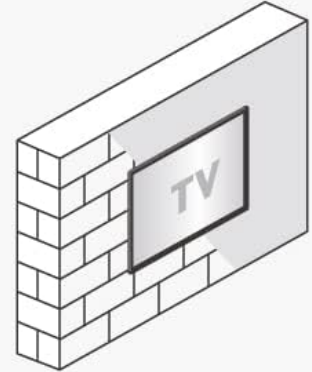
 Drywall/  
gypsum/ plaster



 Drywall with  
**wood studs**



 Concrete blocks/  
concrete wall



## Required

Drill

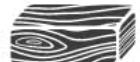


1/4" – 6mm

3/8" – 10mm



5/32" – 4mm



Level



Safety glasses



Stud finder



Image: Illustration of required tools for installation and diagrams showing compatible wall types.

### Wall Compatibility

Ensure your wall is suitable for mounting. This mount is compatible with:

- Drywall with wood studs
- Concrete blocks / Concrete wall

**NOT compatible with:** Drywall / gypsum / plaster without wood studs.

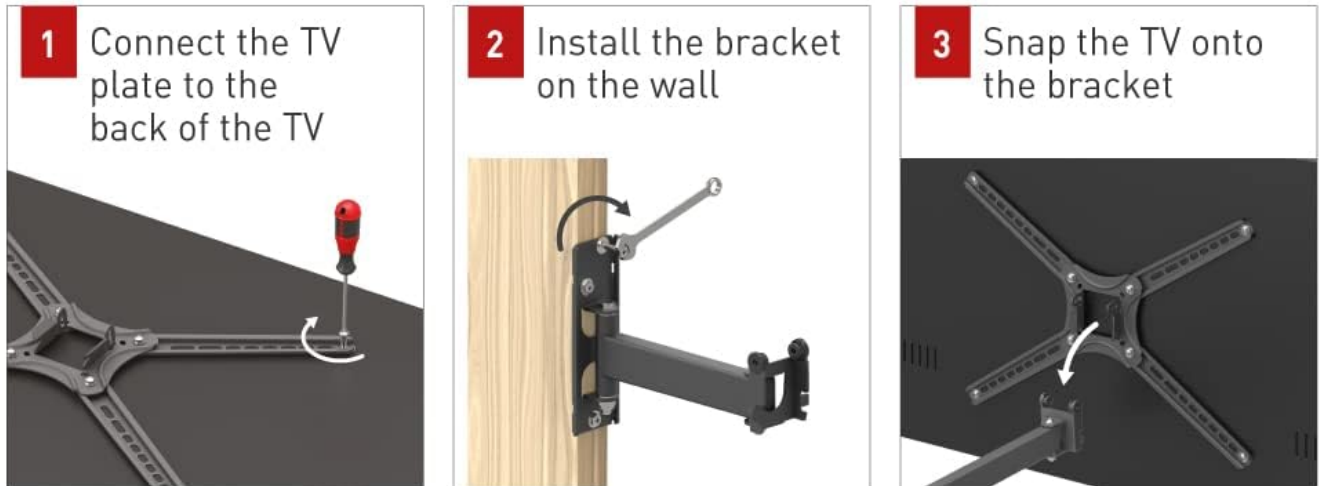
### Assembly Steps (1-2-3)

1. **Connect the TV plate to the back of the TV:** Attach the TV plate to the VESA mounting holes on the back of your television using the appropriate screws, washers, and spacers from the hardware kit. Ensure a secure fit.
2. **Install the bracket on the wall:** Locate the desired mounting position. Use a stud finder for wood studs or mark drill points for concrete. Drill pilot holes and securely fasten the wall bracket to the wall using the provided wall screws and anchors. Use a level to ensure the bracket is straight.

3. **Snap the TV onto the bracket:** Carefully lift the television (with the attached TV plate) and align it with the wall bracket. Snap the TV plate onto the wall bracket. Ensure the safety mechanism is engaged to prevent accidental disengagement.

## Additional value for money

Easy assembly **As easy as 1-2-3**



### Drilling template included

- ✓ Easy installation
- ✓ Accurate
- ✓ Fast



Image: Visual guide for the three-step assembly process: attaching the TV plate, installing the wall bracket, and snapping the TV onto the bracket.

### Backscreen Connection Positioning

The mount supports various VESA patterns. Refer to the diagram to determine the correct positioning for your TV's backscreen connections. Adapters may be required for certain configurations.

# Quality & Safety Above All It all starts from the smallest detail...

## High quality hardware

Where safety and quality are top priorities, we have developed our own unique wall anchor and screws



## **Barkan's** Hardware Kit

Divided and marked hardware kit for easy orientation throughout the assembly process



TV screws compatible with 90% of popular TVs

If your screen requires different screen-connection screws, please purchase them in your local hardware store or contact us at [sales.usa@barkanmounts.com](mailto:sales.usa@barkanmounts.com)

Image: Multiple diagrams illustrating different VESA backscreen connection patterns and how the mount's arms can be configured.

## Screen Type Compatibility

This mount is designed to accommodate both flat and curved screen televisions.

# Fits various screen types

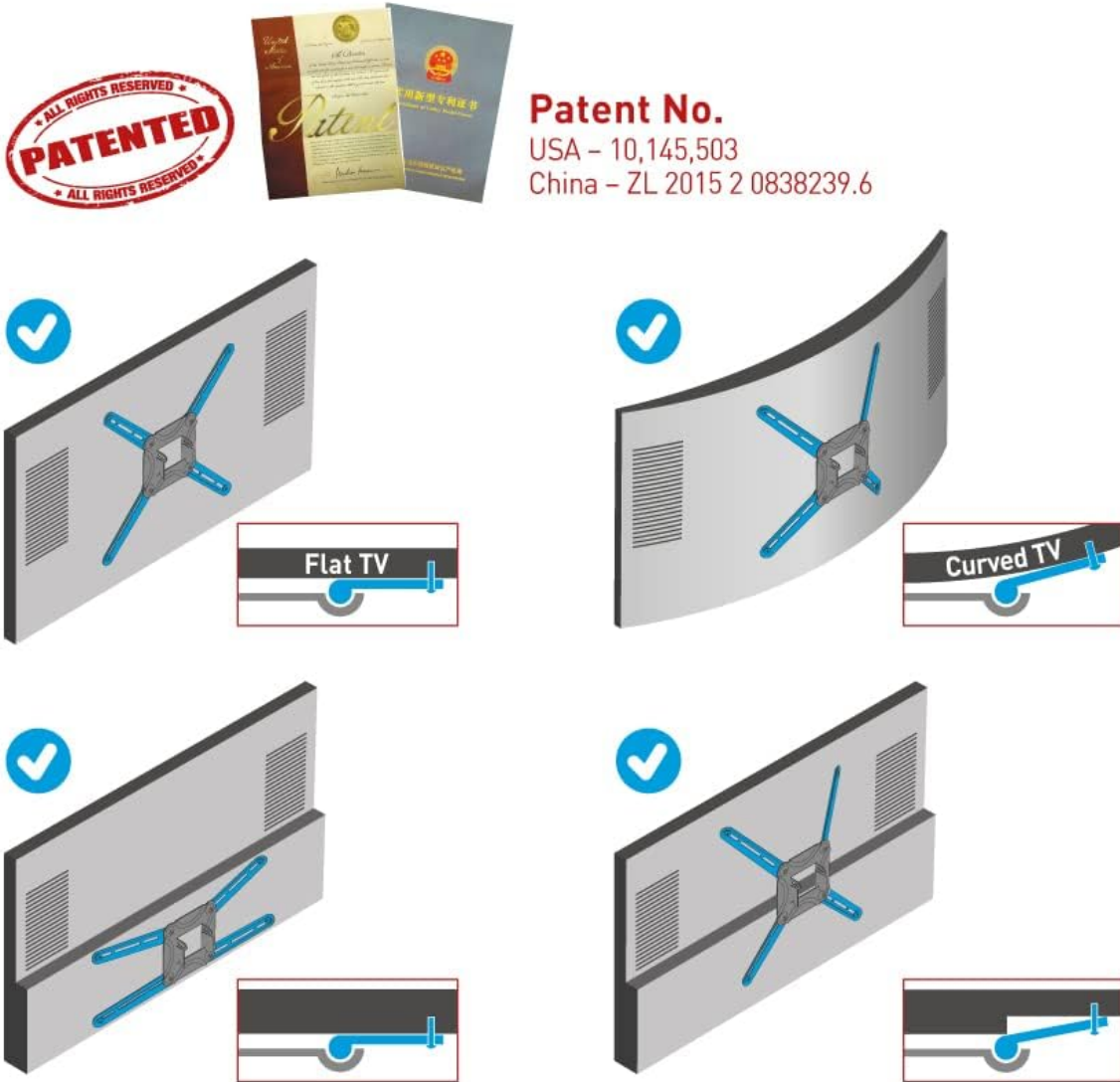


Image: Illustrations demonstrating how the mount fits both flat and curved screen televisions.

## Operating Instructions

Once installed, your Barkan Full Motion TV Wall Mount allows for flexible viewing adjustments:

- **Tilt Adjustment (0° to 15°):** Loosen the tilt adjustment screws on the TV plate, adjust the screen to your desired vertical angle, and then securely tighten the screws.
- **Swivel Adjustment (180°):** Gently push or pull the TV to rotate it horizontally to the left or right. The mount allows for a 180-degree swivel range.
- **Screen Leveling (±5°):** If the screen appears slightly unlevel after installation, adjust the leveling mechanism on the TV plate to achieve a perfectly horizontal display.
- **Extension from Wall (2.6" to 10.4"):** Extend or retract the TV from the wall by gently pulling or pushing the arm assembly.

# Full Motion

# PREMIUM



Image: Visual representation of the mount's adjustable features, including distance from wall, tilt, and screen leveling.

## Maintenance

To ensure the longevity and safe operation of your TV wall mount:

- **Regular Inspection:** Periodically check all mounting screws and connections to ensure they remain tight and secure.
- **Cleaning:** Wipe the mount with a soft, dry cloth. Avoid using abrasive cleaners or solvents that could damage the finish.
- **Lubrication:** The articulating joints are designed for smooth movement. If movement becomes stiff, a small amount of silicone-based lubricant can be applied to the pivot points.

## Troubleshooting

- **TV is not level:** Use the screen leveling adjustment feature ( $\pm 5^\circ$ ) to correct the horizontal alignment. Ensure the wall bracket was installed level.
- **Difficulty moving the TV:** Check if any cables are snagged or if the tilt/swivel screws are overtightened. Apply a small amount of silicone lubricant to the joints if necessary.
- **Mount feels unstable:** Immediately remove the TV from the mount. Re-check all wall and TV connections. Ensure the mount is installed on a compatible wall type and that all screws are fully tightened. Do not re-mount the TV until stability is confirmed.
- **Missing hardware:** Refer to the package contents list. If parts are missing, contact Barkan customer support.

## Warranty and Support

Barkan products are designed for quality and durability. This product includes a **Lifetime Warranty**. For technical assistance, missing parts, or warranty claims, please visit the official Barkan website or contact their customer service team. Detailed contact information can typically be found on the Barkan website or on the product packaging.

### Greatest value for money



**Kids Safety**



**LIFETIME WARRANTY**



**PATENTED**

**Patent No. USA - 10,145,503**  
**China - ZL 2015 2 0838239.6**



Tested at:  
353lbs/160kg



**Extra safe**








**Fall proof**



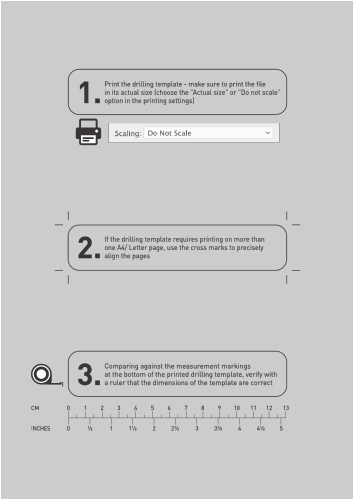
**Cable management**



Related Documents - 3300.B

	<p><a href="#">Barkan BM343XL Extra Long TV Wall Mount Assembly Instructions and User Manual</a></p> <p>Comprehensive assembly instructions and user manual for the Barkan BM343XL Extra Long TV Wall Mount. This guide covers installation, safety precautions, and usage details for mounting TVs from 13" to 65".</p>
	<p><a href="#">Barkan BM331 TV Wall Mount Assembly Instructions   Full Motion Mount</a></p> <p>Comprehensive assembly instructions for the Barkan BM331 Full Motion TV Wall Mount. Learn how to safely install your TV (13"-65") with this versatile, rotating, folding, and tilting mount. Includes parts list, required tools, and step-by-step guidance.</p>
	<p><a href="#">B-TECH BT8224 Full Motion Double Cantilever TV Wall Mount   Specs &amp; Features</a></p> <p>Explore the B-TECH BT8224 Full Motion Double Cantilever Arm Flat Screen Wall Mount. Designed for large screens up to 65" (165cm) and 90kg (198lbs), it offers extensive adjustability including +15° tilt, 180° wall swivel, and integrated cable management. Ideal for corner mounting and compatible with VESA patterns up to 600x400mm.</p>
	<p><a href="#">Barkan Mobile TV Cart SW310H Assembly Instructions and User Manual</a></p> <p>Comprehensive assembly instructions and user manual for the Barkan Mobile TV Cart (SW310H). Learn how to safely install and use your TV mount, including parts identification, hardware details, and step-by-step assembly guidance for TVs from 13 to 65 inches.</p>
	<p><a href="#">Barkan Extra Long TV Wall Mount Installation Guide</a></p> <p>Comprehensive instructions for installing the Barkan Extra Long TV Wall Mount, covering safety precautions, parts identification, required tools, and step-by-step assembly for various TV sizes and wall types.</p>





[\[pdf\]](#) Installation Guide Catalog

BM331 template 2103 Administrator Barkan 29 to 65 Full Motion 3 Movement Flat Curved TV Wall Mount  
Black Patented Touch Tilt Screen Leveling Pre Delivery Install Checklist a Better Point of View 3300 B  
818212000684 0818212000684 1001972927 712d0605 14dd 4959 850e 78cdaf2fee21 images thdstatic  
catalog Images 71 |||

CM 0 INCHES 0 1234 1 1 5 6 7 8 9 10 2 2 3 3 ...

lang:it score:9 filesize: 658.64 K page\_count: 2 document date: 2021-05-02