

Scalextric C7036

Scalextric C7036 Digital Track Straight Lane Change User Manual

Model: C7036 | Brand: Scalextric

1. INTRODUCTION

This manual provides essential information for the setup, operation, and maintenance of your Scalextric C7036 Digital Track Straight Lane Change piece. This component is designed to enhance your digital slot car racing experience by allowing cars to switch lanes during a race.

The Scalextric C7036 is a straight track section measuring 20.5 inches, specifically engineered for Scalextric Digital racing systems. It enables dynamic lane changes, adding a strategic element to your races.

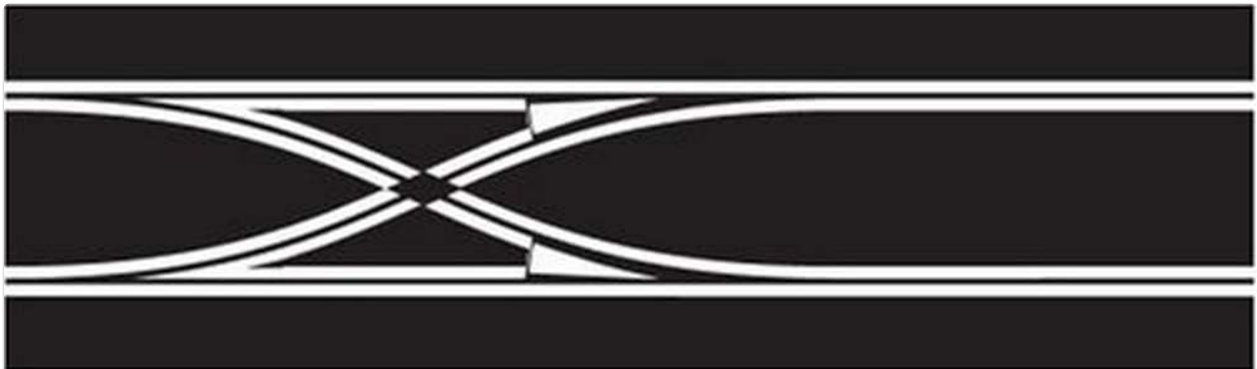


Image 1.1: The Scalextric C7036 Digital Straight Lane Change track piece. This image shows the black track section with the integrated lane change mechanism, featuring two parallel slots that cross over to allow cars to switch lanes.

2. SAFETY INFORMATION

Please read and understand all safety warnings before using this product.

- **Not Suitable for children under 3 years** because of small parts - choking hazard.
- Recommended for **ages 8 and up**.
- **Warning:** Contains small parts which pose a hazard for children under the age of 3 years.
- Please remove all packaging attachments before giving toy to child.

3. WHAT'S IN THE BOX

Your Scalextric C7036 package should contain the following item:

- 1 x 1:32 Digital Straight Track Piece (C7036)

4. SETUP AND INSTALLATION

The C7036 Digital Straight Lane Change track piece is designed for easy integration into your existing Scalextric Digital layout. Follow these steps for proper installation:

1. **Compatibility Check:** Ensure your current Scalextric system is a Digital Powerbase, including ARC Pro. This track piece is exclusively compatible with Scalextric Digital systems.
2. **Track Connection:** The C7036 uses a push-fit system for quick and easy circuit building. Align the connectors of the C7036 with the adjacent track pieces and firmly push them together until they are securely joined. Ensure a flush connection to maintain electrical continuity.
3. **Layout Planning:** Strategically place the lane change track within your circuit to create overtaking opportunities and enhance racing dynamics.
4. **Analog System Upgrade (if applicable):** If upgrading an existing analog slot car set, you will need a Scalextric Digital Powerbase (e.g., C8435) with Digital Hand Controllers (e.g., C8438), additional digital lane change pieces, and your cars must be upgraded with a Digital Plug Ready (DPR) Chip (e.g., C8515 for standard cars, C8516 for open-wheel/single-seaters).



Image 4.1: A top-down view illustrating the lane change mechanism of the Scalextric C7036 track. The image highlights the crossover points where cars can transition between the two lanes.

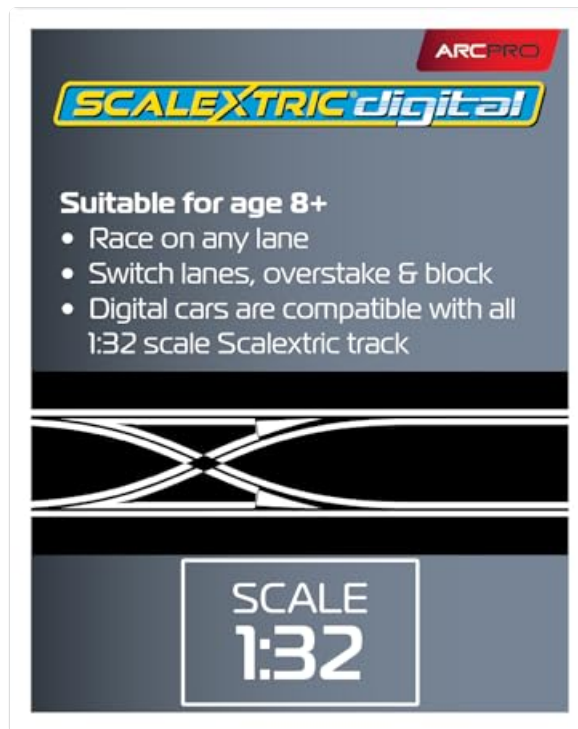


Image 4.2: This graphic highlights key features of Scalextric Digital ARC PRO, including suitability for age 8+, the ability to race on any lane, switch lanes, overtake, and block opponents. It also confirms that digital cars are compatible with all 1:32 scale Scalextric track.

5. OPERATION

The Scalextric C7036 Digital Straight Lane Change track piece is integral to the dynamic gameplay of Scalextric Digital racing. Its primary function is to allow drivers to change lanes during a race, enabling strategic overtaking and defensive maneuvers.

- **Lane Changing:** During a race, drivers can activate the lane change mechanism by pressing a designated button on their digital hand controller. This action will cause their car to switch from one lane to the other as it passes over the lane change section.
- **Strategic Racing:** Utilize the lane change feature to overtake opponents, block their path, or enter/exit pit lanes (if your layout includes them). This adds a layer of strategy not possible with traditional analog slot car systems.
- **Multi-Car Racing:** Scalextric Digital systems, in conjunction with lane change tracks, allow up to six cars to race on two lanes simultaneously, with each car independently controlled.



Image 5.1: Scalextric cars navigating a track section that includes a lane change. This image demonstrates the practical application of the C7036 track piece in a racing scenario, showing cars in different lanes and potentially preparing for a lane change.

6. MAINTENANCE

Proper maintenance ensures the longevity and optimal performance of your Scalextric track components.

- **Cleaning Track Rails:** Regularly clean the metal rails of the track using a lint-free cloth. For stubborn dirt or oxidation, a specialized track cleaner or a mild abrasive (like a pencil eraser) can be used sparingly. Ensure no residue is left behind.
- **Cleaning Lane Change Mechanism:** Keep the moving parts of the lane change mechanism free from dust and debris. A soft brush or compressed air can be used to dislodge any particles.
- **Connection Integrity:** Periodically check all track connections to ensure they are firm and flush. Loose connections can lead to inconsistent power supply and poor performance.
- **Storage:** When not in use, store track pieces in a clean, dry environment away from direct sunlight and extreme temperatures to prevent warping or damage.

7. TROUBLESHOOTING

If you encounter issues with your C7036 Digital Track Straight Lane Change, consider the following troubleshooting steps:

- **Car Not Changing Lanes:**
 - Ensure the car is a digital car equipped with a DPR chip and is correctly assigned to a controller.
 - Verify that the lane change button on the controller is functioning correctly.
 - Check for any obstructions in the lane change mechanism on the track piece.
 - Ensure the track connections leading to and from the lane change piece are secure.
- **Inconsistent Power/Car Stalling:**
 - Inspect all track connections for tightness and cleanliness.
 - Clean the track rails thoroughly to ensure good electrical contact.
 - Check the power supply unit and powerbase for proper connection and function.

- **Track Pieces Not Fitting Securely:**
 - Ensure track pieces are aligned correctly before pushing them together.
 - Avoid forcing connections; if a piece is difficult to connect, check for bent pins or debris.

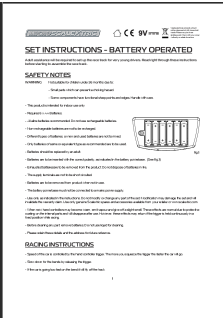
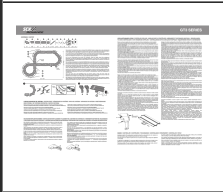
8. SPECIFICATIONS

Feature	Detail
Product Dimensions	24 x 10 x 3 inches
Item Weight	15 ounces
Item Model Number	C7036
Manufacturer Recommended Age	14 years and up
Manufacturer	Hornby
Compatibility	Scalextric Digital Systems (including ARC Pro)
Track Type	Straight Lane Change

9. SUPPORT

For further assistance, technical support, or inquiries regarding your Scalextric C7036 Digital Track Straight Lane Change, please contact Scalextric customer support directly. Refer to the official Scalextric website or product packaging for the most current contact information.

Related Documents - C7036

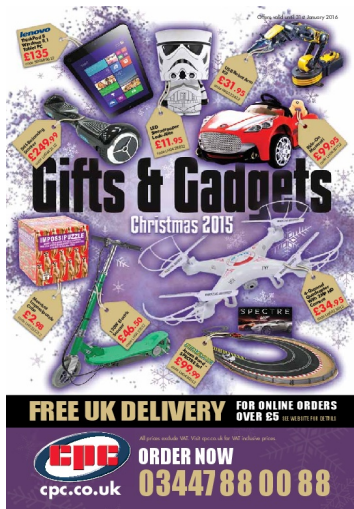
	<p>Micro Scalextric Battery Operated Set Instructions: Setup, Operation & Maintenance Guide</p> <p>Detailed instructions for setting up, operating, and maintaining the Micro Scalextric Battery Operated race track set. Includes safety guidelines, assembly steps, car and track maintenance tips, contact information, and warranty details for the Scalextric brand by Hornby Hobbies Ltd.</p>
	<p>SCX Advance GT3 Series Instruction Manual</p> <p>Detailed instruction manual for the SCX Advance GT3 Series slot car racing set, covering track assembly, component connections, and car features. Includes guidance for setting up the racing circuit.</p>



[Haynes Max Power Modifying Manuals: Your Guide to Customizing Your Car](#)

Explore the comprehensive range of Haynes Max Power Modifying Manuals, offering step-by-step guides and expert advice for customizing cars. Discover how to enhance performance, styling, and in-car entertainment with hundreds of color photographs.

lang:en score:14 filesize: 15.73 M page_count: 128 document date: 2006-02-15



[Gifts & Gadgets Christmas 2015 Catalog - Explore the Latest Toys, Electronics, and Hobbies](#)

Discover a wide selection of gifts and gadgets for Christmas 2015, featuring the latest toys, drones, RC cars, model kits, electronics, puzzles, games, and more from top brands. Shop now for holiday fun.

lang:en score:11 filesize: 6.86 M page_count: 76 document date: 2015-11-03