

Manuals+

[Q & A](#) | [Deep Search](#) | [Upload](#)

manuals.plus /

- › [Icone](#) /
- › [Icone DVD User Manual](#)

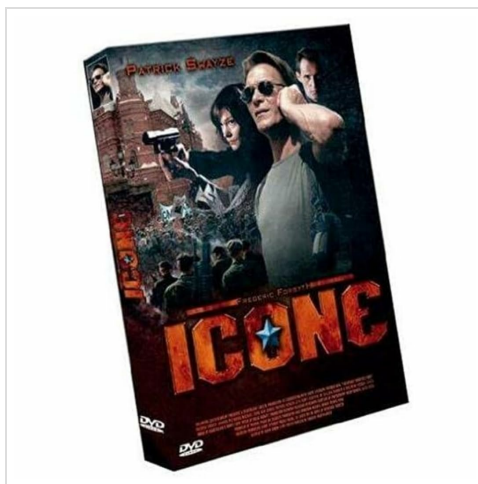
Icone B000PIU1Y2

Icone DVD User Manual

Model: B000PIU1Y2

INTRODUCTION

This manual provides essential information for the proper use and care of your Icone DVD. Please read these instructions carefully to ensure optimal viewing experience and to maintain the longevity of your disc.



This image displays the front cover of the Icone DVD. The cover features the movie title 'ICONE' prominently, along with images of the main actors, including Patrick Swayze, and action scenes.

SETUP

To begin watching the Icone DVD, follow these simple steps:

1. **Prepare Your DVD Player:** Ensure your DVD player or computer's DVD drive is clean and powered on.
2. **Insert the Disc:** Gently hold the Icone DVD by its edges to avoid touching the playback surface. Insert the disc into the DVD player or drive with the label side facing up.
3. **Close the Tray:** Close the disc tray or slot. The player should automatically detect the disc and begin loading.
4. **Connect to Display:** Ensure your DVD player is correctly connected to your television or monitor via appropriate cables (e.g., HDMI, RCA).

OPERATING INSTRUCTIONS

Once the DVD has loaded, you can navigate its features:

- **Main Menu:** The DVD will typically display a main menu. Use your remote control's arrow keys to navigate and the 'Enter' or 'OK' button to select options.
- **Play Movie:** Select "Play Movie" or "Start" to begin watching the film.
- **Language Selection:** The Icone DVD supports multiple languages. To change the audio language, navigate to the "Audio" or "Language" option on the main menu or during playback (if your player supports on-the-fly changes).
 - *Available Audio Languages:* English (Dolby Digital 5.1), French (Dolby Digital 2.0).
- **Subtitle Selection:** To enable or change subtitles, look for a "Subtitles" or "Captions" option.
 - *Available Subtitles:* French.
- **Scene Selection:** If available, use the "Scene Selection" or "Chapters" option to jump to specific parts of the movie.

MAINTENANCE AND CARE

Proper care of your Icone DVD will ensure its longevity and continued performance:

- **Handling:** Always hold the disc by its outer edges or by inserting a finger through the center hole. Avoid touching the shiny playback surface.
- **Cleaning:** If the disc becomes dirty or smudged, gently wipe it with a soft, lint-free cloth. Wipe from the center of the disc outwards in a straight line, not in a circular motion. Do not use abrasive cleaners or solvents.
- **Storage:** Store the DVD in its original case when not in use. Keep it away from direct sunlight, extreme temperatures, and high humidity.
- **Avoid Scratches:** Do not place the disc on rough surfaces or allow it to come into contact with sharp objects.

TROUBLESHOOTING

If you encounter issues while playing your Icone DVD, consider the following:

Problem	Possible Cause	Solution
Disc does not play or load.	Disc is dirty or scratched; player is not functioning correctly; disc inserted incorrectly.	Clean the disc (see Maintenance); try the disc in another player; ensure disc is inserted label-side up.
No audio.	Audio settings incorrect; cables loose; TV/receiver volume low.	Check audio settings on DVD menu and player; ensure audio cables are securely connected; increase volume on TV/receiver.
No video.	Video cables loose; incorrect input selected on TV; TV/monitor off.	Check video cables; ensure TV is on the correct input (e.g., HDMI 1, Video 1); turn on TV/monitor.
Playback is choppy or freezes.	Disc is dirty or damaged; player lens is dirty.	Clean the disc; try a DVD lens cleaner disc for your player.

SPECIFICATIONS

Key technical details for the Icone DVD:

- **ASIN:** B000PIU1Y2
- **Format:** DVD
- **Aspect Ratio:** 1.77:1
- **Dubbed Languages:** French, English
- **Subtitles:** French
- **Audio Languages:** French (Dolby Digital 2.0), English (Dolby Digital 5.1)
- **Number of Discs:** 1
- **Color:** Color
- **Package Dimensions:** 7.56 x 5.43 x 0.55 inches; 3.52 ounces

ADDITIONAL INFORMATION

For further assistance or inquiries regarding the Icone DVD, please refer to the distributor's contact information provided on the DVD packaging or consult the retailer from whom the product was purchased.