



Manuals.plus /

- › HP /
- › HP 95/98 Ink Cartridges User Manual

HP CB327FN#140

HP 95/98 Ink Cartridges User Manual

Model: CB327FN#140

1. PRODUCT OVERVIEW

This manual provides essential information for the use and maintenance of HP 95 Tri-color and HP 98 Black Ink Cartridges. These cartridges are designed to work with a range of HP Deskjet, Officejet, Photosmart, and PSC series printers, ensuring reliable performance and high-quality prints.

The combo pack includes one HP 95 Tri-color cartridge (C9368WN) and one HP 98 Black cartridge (C9364WN).

Key Features:

- **Compatibility:** Designed for various HP Deskjet, Officejet, Photosmart, and PSC printer models.
- **Page Yield:** Approximately 420 pages for the Black cartridge and 330 pages for the Tri-color cartridge.
- **Print Quality:** Engineered to produce crisp black text and vibrant, lifelike colors.
- **Fade Resistance:** HP Vivera inks are formulated to resist fading, ensuring prints last for decades.
- **Authenticity:** Original HP ink cartridges ensure optimal performance and reliability with HP printers.

2. SETUP AND INSTALLATION

Follow these general steps to install your HP ink cartridges. Specific steps may vary slightly depending on your printer model. Always refer to your printer's user manual for detailed instructions.

1. **Unpack the Cartridges:** Carefully remove the new ink cartridges from their packaging. Avoid touching the copper-colored electrical contacts or ink nozzles.
2. **Open Printer Access Door:** Turn on your printer. Open the ink cartridge access door. The print carriage will move to the center of the printer. Wait until the carriage is idle and silent before proceeding.
3. **Remove Old Cartridges:** Gently press down on the old cartridge to release it, then pull it out of its slot.
4. **Prepare New Cartridges:** Remove the protective tape from the new cartridge. Do not remove the copper-colored strip or re-tape the cartridge.
5. **Insert New Cartridges:** Hold the new cartridge with the nozzles facing the printer and slide it into its color-coded slot until it clicks into place. The black cartridge typically goes into the right slot, and the tri-color into the left, but this can vary by model.
6. **Close Access Door:** Close the ink cartridge access door. The printer may perform an alignment process.

HP SINGLE PACKS

HP MULTI-PACKS



Simplify your shopping



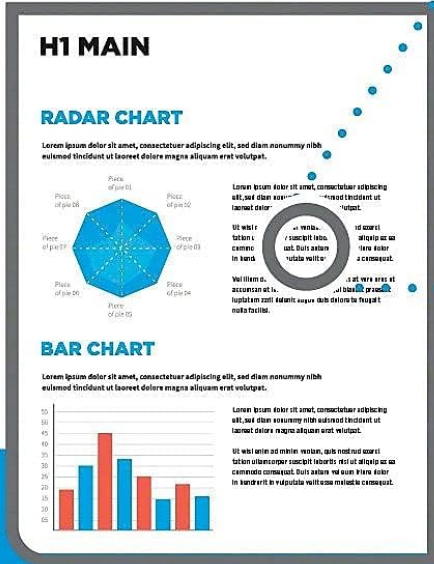
Image 2.1: Illustration of purchasing single ink packs versus multi-packs, suggesting multi-packs for convenience.

3. OPERATING INSTRUCTIONS

Once the cartridges are installed, your printer is ready for use. The HP 95 and 98 cartridges are designed for everyday printing of documents and photos.

- **Printing Documents:** Use your printer's software or operating system's print function to send documents to the printer. Select appropriate print settings for desired quality (e.g., draft, normal, best).
- **Printing Photos:** For optimal photo quality, use HP photo paper and select photo-specific print settings in your printer software. The Vivera inks are designed to produce vibrant and long-lasting photo prints.

with Original HP Ink

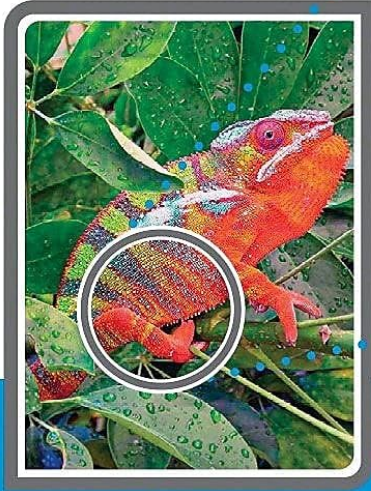


© 2017 HPDC, L.P.

Bold, sharp text



Image 3.1: Close-up view demonstrating the bold and sharp text quality achieved with Original HP Ink.



© 2017 HPDC, L.P.

Vibrant colors



Image 3.2: Close-up view highlighting the vibrant color reproduction of Original HP Ink, as seen in a chameleon image.



FADE-RESISTANT PRINTS

that last for generations*

* See hp.com/go/printpermanence.

Image 3.3: An HP printer producing photos, with an open photo album displaying prints, emphasizing the fade-resistant quality of the ink.

4. MAINTENANCE AND STORAGE

Proper maintenance and storage can extend the life of your ink cartridges and ensure consistent print quality.

- **Storage:** Store unopened ink cartridges in their original sealed packaging at room temperature, away from direct sunlight or extreme temperatures.
- **Installed Cartridges:** If your printer will be unused for an extended period, ensure it is turned off correctly to cap the print heads and prevent ink from drying out.
- **Cleaning Print Heads:** If print quality degrades (e.g., streaks, faded colors), use your printer's utility software to perform a print head cleaning cycle. Refer to your printer's manual for instructions.
- **Handling:** Avoid touching the electrical contacts or nozzles on the cartridge.

5. TROUBLESHOOTING

Here are some common issues and their potential solutions:

Problem	Possible Cause	Solution
Printer not recognizing cartridge	Protective tape not removed, dirty electrical contacts, improperly seated cartridge.	Ensure all protective tape is removed. Remove and reinsert the cartridge firmly. Clean electrical contacts on the cartridge and in the printer with a lint-free cloth.
Poor print quality (streaks, faded colors)	Clogged print nozzles, low ink levels, incorrect paper type.	Run a print head cleaning cycle from your printer's software. Check ink levels and replace cartridges if low. Ensure you are using appropriate paper for your print settings.
Ink smears or smudges	Incorrect paper, print settings, or excessive humidity.	Use recommended paper types. Allow prints to dry completely before handling. Ensure print settings match the paper type.

If these steps do not resolve the issue, consult your printer's specific user manual or visit the HP support website.

6. SPECIFICATIONS

Detailed specifications for the HP 95 Tri-color and HP 98 Black Ink Cartridges:

Model Numbers: HP 95 (C9368WN), HP 98 (C9364WN)

Product Model Number (Combo Pack): CB327FN#140

Ink Colors: Black, Tri-color (Cyan, Magenta, Yellow)

Page Yield (Approx.): Black: 420 pages; Tri-color: 330 pages

Item Weight: 3.84 ounces (for the combo pack)

Product Dimensions: 22 x 12 x 2 inches (packaging)

Operating Temperature Range: 59 to 90°F (15 to 32°C)

Storage Temperature Range: -40 to 140°F (-40 to 60°C)

Compatible Devices: HP Deskjet 460, 2575, C4150, C4180, 6830, 6840, 9800; HP Officejet 100, 150, 6940, 6988, H470, 7210, 7310, 7410, J6480; HP Photosmart 335, 375, 385, 422, 425, 428, 475, 2575, C4150, C4180, 8049, 8050, 8150, 8350, 8450, 8750; HP PSC 1510, 1610, 2355.

7. WARRANTY AND SUPPORT

HP Original Ink Cartridges are manufactured to high-quality standards. For specific warranty information regarding your HP ink cartridges, please refer to the documentation included with your product or visit the official HP support website. HP provides support resources, including drivers, troubleshooting guides, and contact information, for their products.

HP Official Support

You can also find more information about HP products and services on their Amazon store page:

Visit the HP Store on Amazon