

[Manuals.plus](#) /

> [Gardena](#) /

> GARDENA 1569-U Pop-Up Sprinkler System Pro Instruction Manual

## Gardena 1569-U

# GARDENA 1569-U Pop-Up Sprinkler System Pro Instruction Manual

Model: 1569-U

## 1. INTRODUCTION

The GARDENA 1569-U Pop-Up Sprinkler System Pro is designed for efficient and precise watering of smaller lawn areas. This sprinkler is permanently installed underground and connects to a pipe system, emerging only when watering is required. After completing its task, it retracts back into the ground, maintaining an unobstructed lawn.

### Key Features:

- Designed for watering smaller lawn areas.
- Features water flow on/off control.
- Includes an integrated dirt filter for reliable operation.
- Watering area coverage up to 860 sq.-Feet.
- Adjustable range from 8 to 16-Feet.
- Waters from 5-Degree to 360-Degree.

## 2. PRODUCT OVERVIEW

The GARDENA 1569-U Pop-Up Sprinkler is a robust component of an underground irrigation system, ensuring discreet and effective lawn watering.





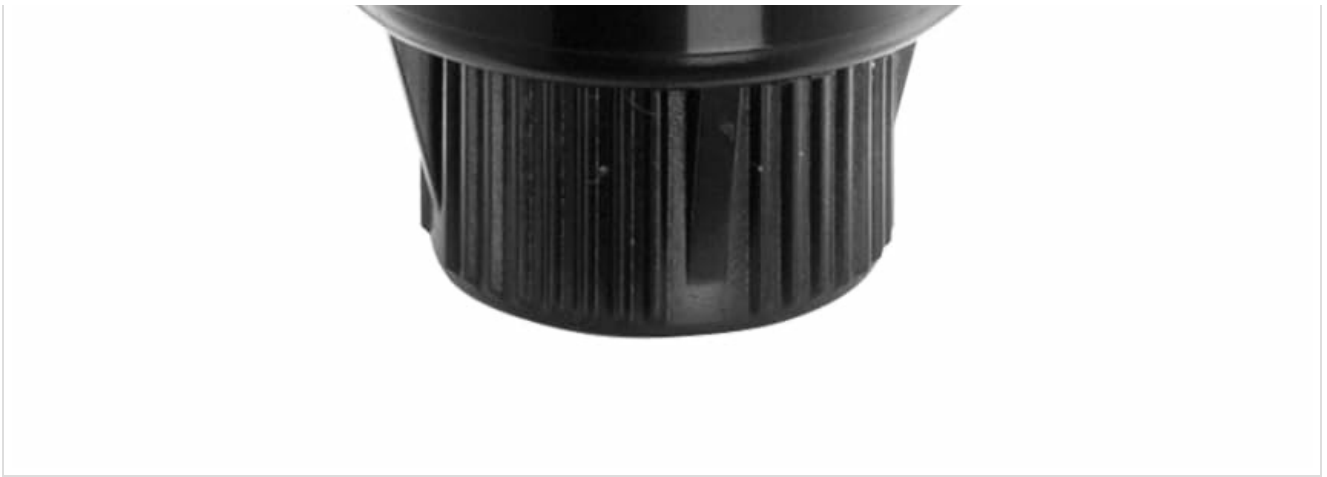


Image 1: The GARDENA 1569-U Pop-Up Sprinkler, shown in its retracted state.

### 3. SETUP

---

The 1569-U Pop-Up Sprinkler is designed for permanent underground installation. It connects to a pipe system, which should be planned and installed according to your lawn's specific watering needs. Ensure proper trenching and connection to the main water supply and other sprinkler units for optimal system performance.

For automatic irrigation, consider integrating a GARDENA Watering Control unit into your system. This allows for scheduled watering, even in your absence, ensuring your garden receives consistent hydration.

### 4. OPERATING INSTRUCTIONS

---

Once installed and connected, the sprinkler will pop up when the water supply is activated, distributing water across the designated area. The watering range and angle can be adjusted to suit the specific dimensions and shape of your lawn.

The water flow on/off control allows for manual operation if needed, providing flexibility outside of automated schedules. Adjust the sprinkler head to achieve the desired spray pattern and coverage, ensuring efficient water distribution without waste.





Image 2: GARDENA Pop-Up Sprinklers in operation, watering a lawn area.



Image 3: A close-up view of the GARDENA Pop-Up Sprinkler distributing water.

## 5. MAINTENANCE

---

The GARDENA 1569-U Pop-Up Sprinkler includes an integrated dirt filter. Regularly inspect and clean this filter to prevent blockages and ensure consistent water flow and optimal performance. Depending on water quality, more frequent cleaning may be necessary.

During colder months, it is crucial to properly winterize your sprinkler system to prevent damage from freezing water. Consult your full system manual for detailed winterization procedures.

## 6. TROUBLESHOOTING

---

If your sprinkler system is not functioning as expected, check the following:

- **No water or low pressure:** Verify the main water supply is on and check for any closed valves in the irrigation line. Inspect the integrated dirt filter for clogs.
- **Uneven watering:** Ensure the sprinkler head is properly adjusted for the desired range and angle. Check for

debris obstructing the spray nozzles.

- **Sprinkler not popping up:** Check for sufficient water pressure. Debris around the sprinkler head or a damaged spring mechanism could also be a cause.

For persistent issues, please contact GARDENA customer support or a certified irrigation specialist.

## 7. SPECIFICATIONS

Specification	Value
Brand	Gardena
Model Number	1569-U
Manufacturer Part Number	01569-29
Style	Pop-Up
Material	Metal
Color	Gray
Item Dimensions (L x W x H)	6.1 x 2.17 x 2.17 inches
Item Weight	100 Grams
Maximum Pressure	50 Pound per Square Inch
Inlet Connection Size	0.5 Inches
Included Components	1 item

## 8. WARRANTY AND SUPPORT

GARDENA products are known for their quality and durability. Spare parts for this product are available for a duration of 10 years within the EU. For specific warranty details, product support, or to inquire about spare parts, please visit the official GARDENA website or contact their customer service directly.

## 9. OFFICIAL PRODUCT VIDEO

Your browser does not support the video tag.

Video 1: An overview of the GARDENA system, highlighting product quality, manufacturing processes, and durability testing. This video demonstrates the robust nature and design principles behind GARDENA products, including various watering tools and connectors.