

Dodge Caravan

2003 Dodge Caravan Owner's Manual

Comprehensive guide for the operation and maintenance of your 2003 Dodge Caravan.

INTRODUCTION

This manual provides essential information for the safe and efficient operation, maintenance, and care of your 2003 Dodge Caravan. Familiarize yourself with its contents to ensure a thorough understanding of your vehicle's features and functions. Keep this manual in your vehicle for quick reference.

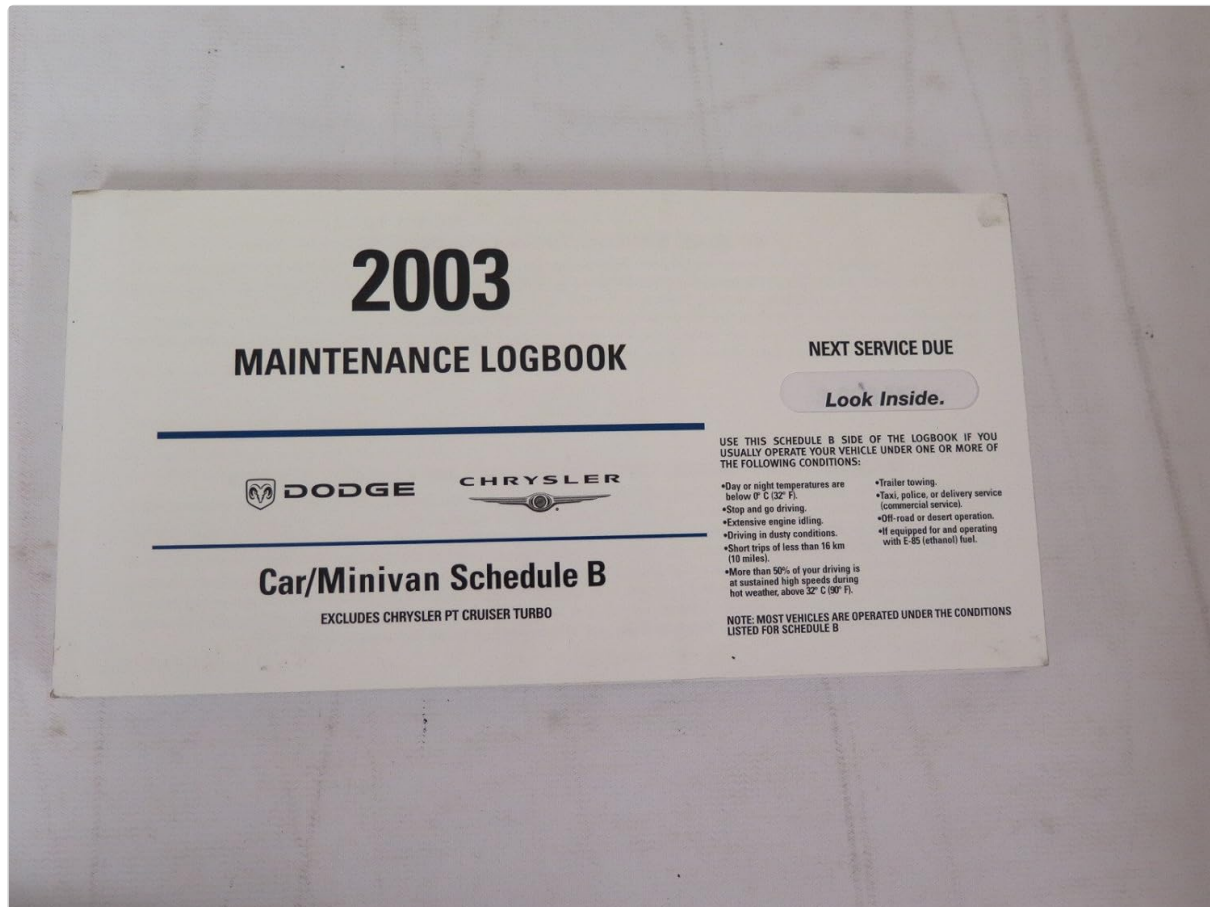


Image: Front cover of the 2003 Dodge Caravan Owner's Manual, displaying the Dodge logo and vehicle model year.

VEHICLE OVERVIEW AND SETUP

Before operating your vehicle, it is recommended to review the basic controls and indicators. This section covers initial setup procedures and familiarization with the vehicle's primary components.

- **Dashboard Layout:** Understand the location and function of gauges, warning lights, and control buttons.
- **Seating Adjustments:** Proper adjustment of seats, head restraints, and mirrors for optimal driving position and safety.
- **Ignition System:** Instructions for starting and stopping the engine.
- **Door Locks and Security:** Operation of manual and remote locking systems, and security features.

OPERATING YOUR VEHICLE

This section details the procedures for driving your 2003 Dodge Caravan, including information on transmission operation, braking, and various driving modes.

- **Starting and Driving:** Step-by-step guide for vehicle ignition and basic driving.
- **Transmission:** Details on automatic transmission operation, including Park, Reverse, Neutral, Drive, and Low gear selections.
- **Braking System:** Information on the anti-lock braking system (ABS) and proper braking techniques.
- **Climate Control:** Operation of heating, ventilation, and air conditioning systems.
- **Audio System:** Instructions for using the factory-installed audio unit.
- **Lighting:** Operation of exterior and interior lighting, including headlights, turn signals, and hazard lights.

MAINTENANCE AND CARE

Regular maintenance is crucial for the longevity and performance of your Dodge Caravan. This section outlines recommended service schedules and procedures for routine checks.



Image: Cover of the 2003 Dodge Caravan Maintenance Logbook, indicating scheduled service and operating conditions.

- **Scheduled Maintenance:** Refer to the maintenance schedule for oil changes, tire rotations, and other periodic services.
- **Fluid Checks:** How to check engine oil, coolant, brake fluid, and power steering fluid levels.
- **Tire Care:** Information on tire pressure, rotation, and replacement.
- **Battery Maintenance:** Tips for maintaining battery health and jump-starting procedures.
- **Cleaning:** Recommendations for interior and exterior cleaning to preserve your vehicle's appearance.

TROUBLESHOOTING COMMON ISSUES

This section provides guidance on identifying and resolving common operational issues you might encounter with your 2003 Dodge Caravan.

- **Warning Lights:** Explanation of dashboard warning indicators and recommended actions.
- **Engine Problems:** Basic troubleshooting for engine starting issues or unusual noises.
- **Electrical Issues:** Solutions for minor electrical malfunctions, such as blown fuses.
- **Flat Tire:** Instructions for safely changing a flat tire.
- **Overheating:** Steps to take if the engine temperature gauge indicates overheating.

SPECIFICATIONS

Detailed technical specifications for the 2003 Dodge Caravan are provided here for reference.

| Specification | Detail |
|---------------|--------|
|---------------|--------|

| | |
|------------------|-----------------|
| ASIN | B000OFZKGU |
| Publisher | Dodge |
| Publication date | January 1, 2003 |
| Edition | 4th |
| Language | English |
| Item Weight | 1.35 pounds |

WARRANTY INFORMATION

This section provides general information regarding the vehicle's warranty. For specific terms and conditions, please refer to the separate warranty booklet provided with your vehicle.



Image: Cover of the 2003 Dodge Car and Truck Warranty Information Guide, providing details on vehicle warranty.

Note: A separate "LIMITED WARRANTY Highway Auto & Light Truck Tire Adjustment Policy" from Goodyear may be included with your vehicle documentation, pertaining specifically to tires. This is distinct from the vehicle's primary warranty.



Image: Goodyear Limited Warranty for Highway Auto & Light Truck Tires, detailing adjustment policy.

SUPPORT AND ASSISTANCE

For additional support or in case of emergencies, refer to the following resources.

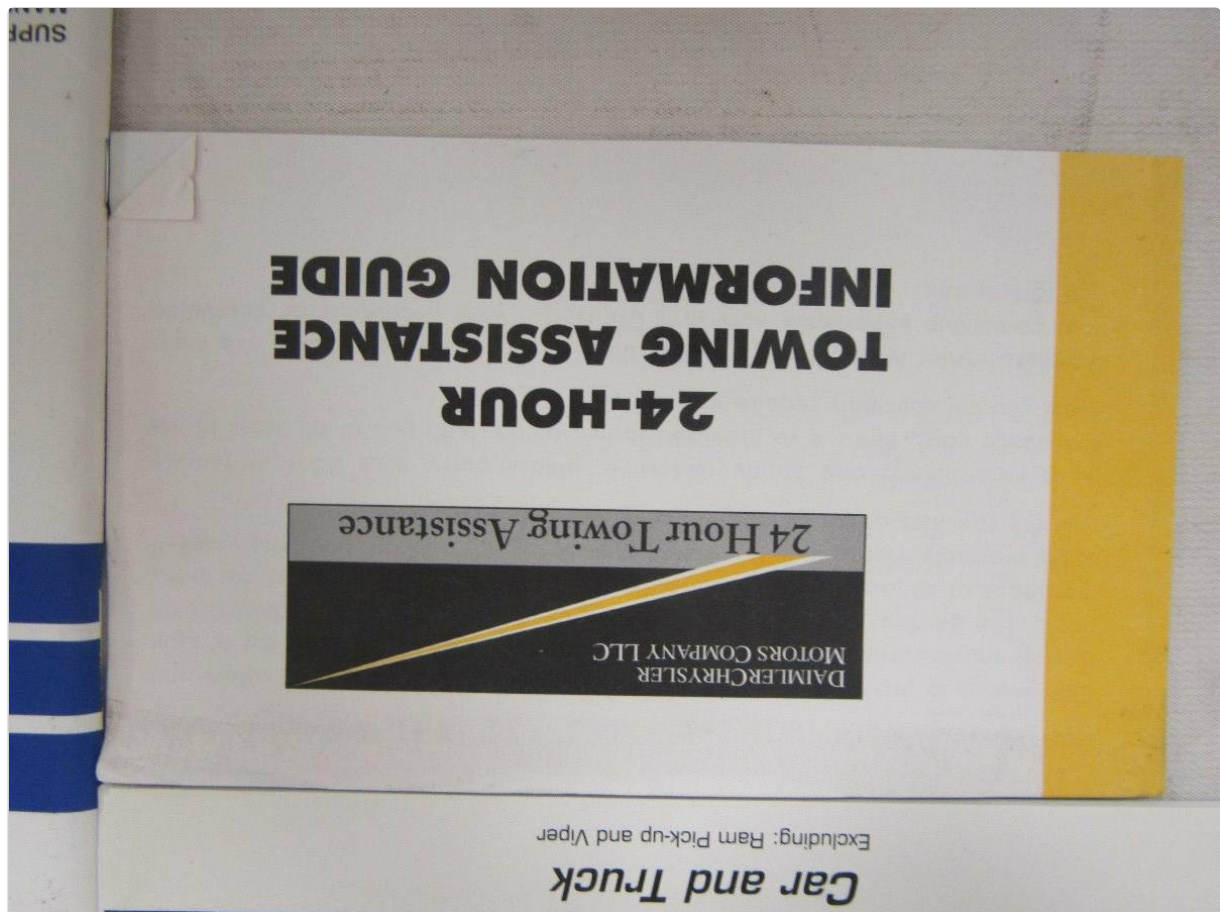


Image: Cover of the 24-Hour Towing Assistance Information Guide, providing contact details for roadside assistance.

- **Roadside Assistance:** Contact information for 24-hour towing and roadside services.
- **Customer Service:** Details on how to contact Dodge customer service for further inquiries.
- **Authorized Dealerships:** Locate authorized service centers for professional maintenance and repairs.

This manual is published by DaimlerChrysler Corporation, First Edition, Printed in U.S.A.

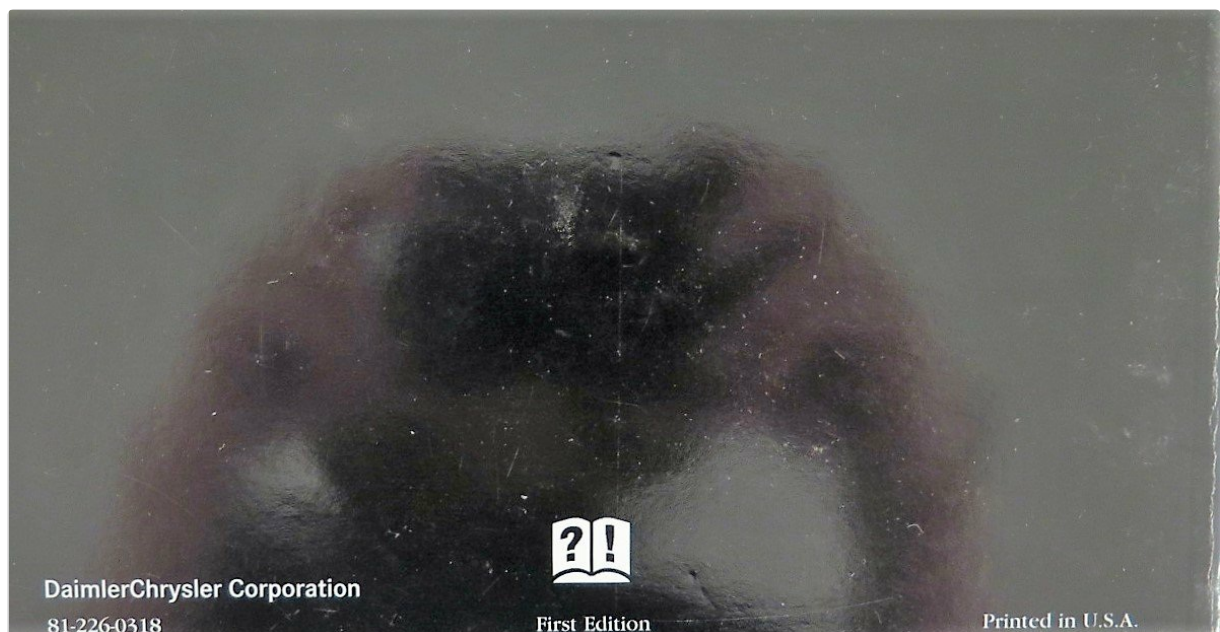


Image: Back cover of the owner's manual, showing publisher information and print details.

